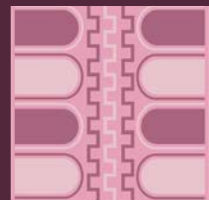
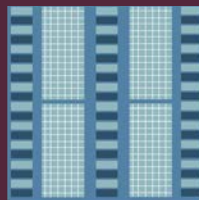
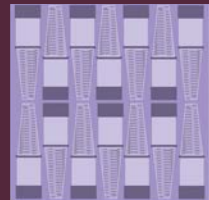
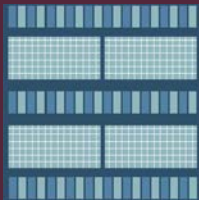
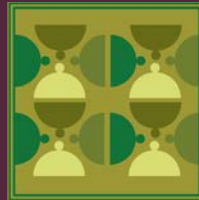
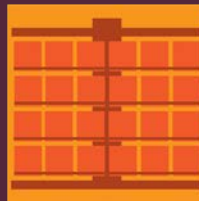
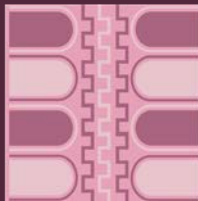
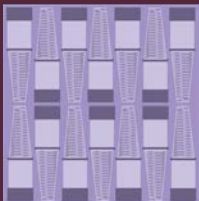
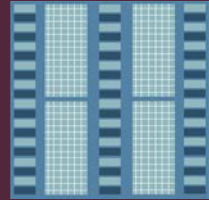
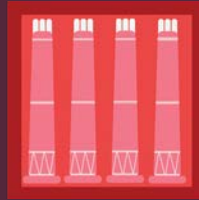


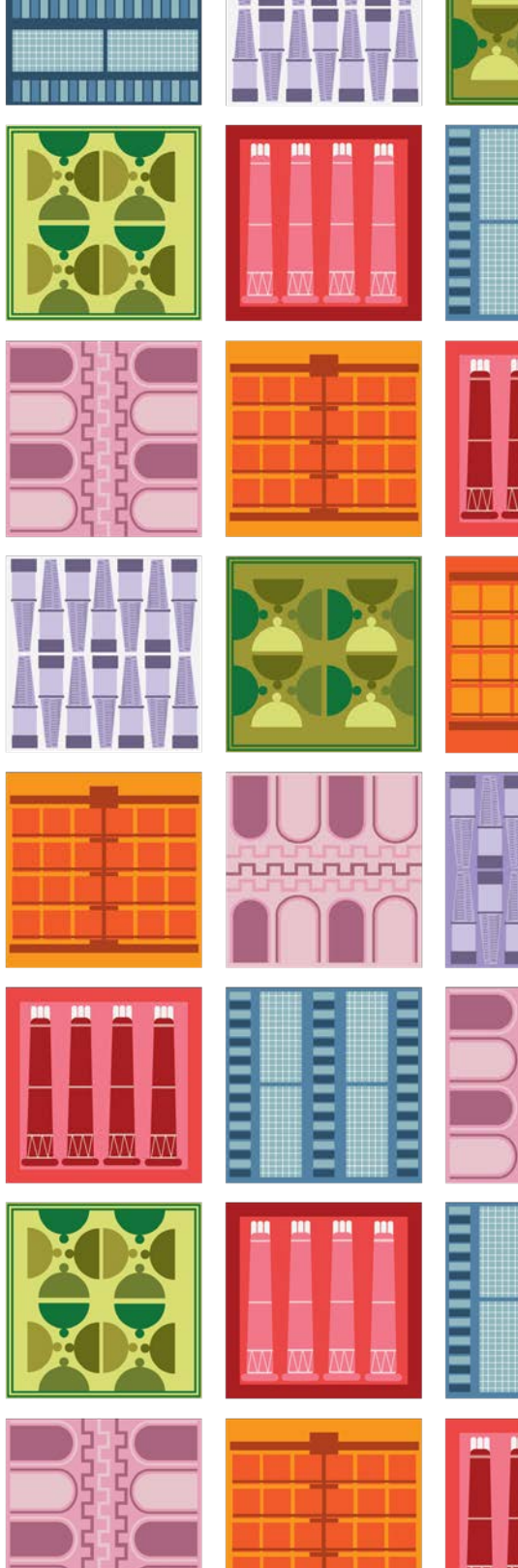
# ROEHAMPTON WALKS

## A WALKING GUIDE TO LOCAL LANDMARKS



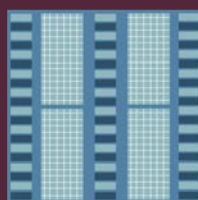
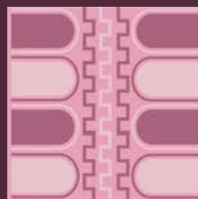
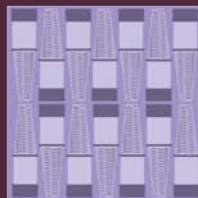
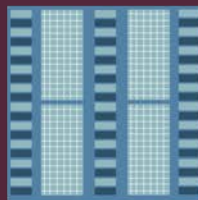
# CONTENTS

- 01** About Roehampton
- 02** Roehampton Walks
- 03** Other Local Landmarks
- 04** Meet the Businesses



# 01

## ABOUT ROEHAMPTON



# INTRODUCTION

Roehampton, one of Wandsworth's most historic areas, is rich in notable buildings, memorials, statues, and curiosities. This guide focuses on Roehampton and is presented through five walks. The guide highlights a range of key local

landmarks and historical treasures. For more in-depth background, reference materials are available in Wandsworth libraries, with Jacqueline Loose's book 'Roehampton: The Last Village in London' especially recommended.





# TIMELINE

1332

The origin of Roehampton can be traced back to 1332 when it consisted of just 4 houses.



There were 14 houses and one inn, then known as The Bull but later renamed the King's Head.

1485

1498

Roehampton had grown to 40 houses.

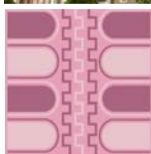
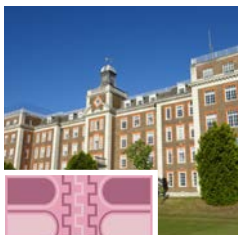


By 1617 there were 33 houses and another inn, the Angel. Numerous large country houses were built in the area so that the rich could escape the city's squalor.

1617

1726

Daniel Defoe noted that 'these are all houses of retreat, gentlemen's summer houses, or citizens country houses; whither they retire from the hurries of business'.



The opening of Putney Bridge in 1729 made the area more accessible and drew more people to the area.

1729

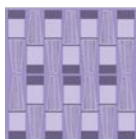
1817

An unknown admirer wrote that 'Roehampton is a hamlet in the parish of Putney, abounding in handsome villas of the nobility and gentry and a neat chapel.'



Now Roehampton had 285 houses and a few shops. The 1911 Census recorded a population of 2584.

1901



# TIMELINE

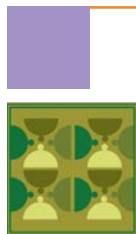
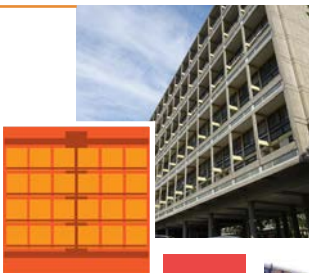
**1920** During the 1920s and 1930s many large houses (Dover House) were demolished whilst others (Grove House) were incorporated into educational establishments.



After the Second World War work began by the London County Council to rehouse those made homeless.

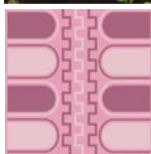
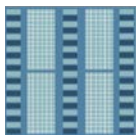
**1945**

**1950** Work began on the Alton East Estate in the early 1950s and on the Alton West Estate in the late 1950s.

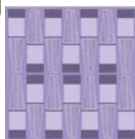
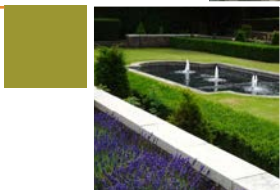


The Census gave Roehampton's population as about 13,000 and it is estimated that this had risen to some 13,500 by 2011.

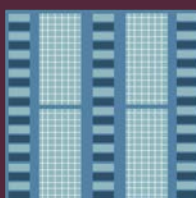
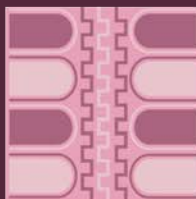
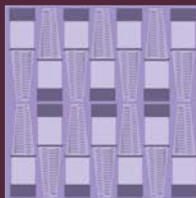
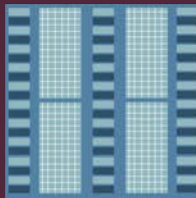
**2001**



**2004** Roehampton University was established on 1st August 2004 and brought together several well-respected educational establishments. The origins of the University's four colleges lie in the nineteenth century with three of them having religious backgrounds: Whitelands, Digby Stuart and Southlands. The fourth had a non-denominational background and was based on the innovative teaching methods of Friedrich Froebel.

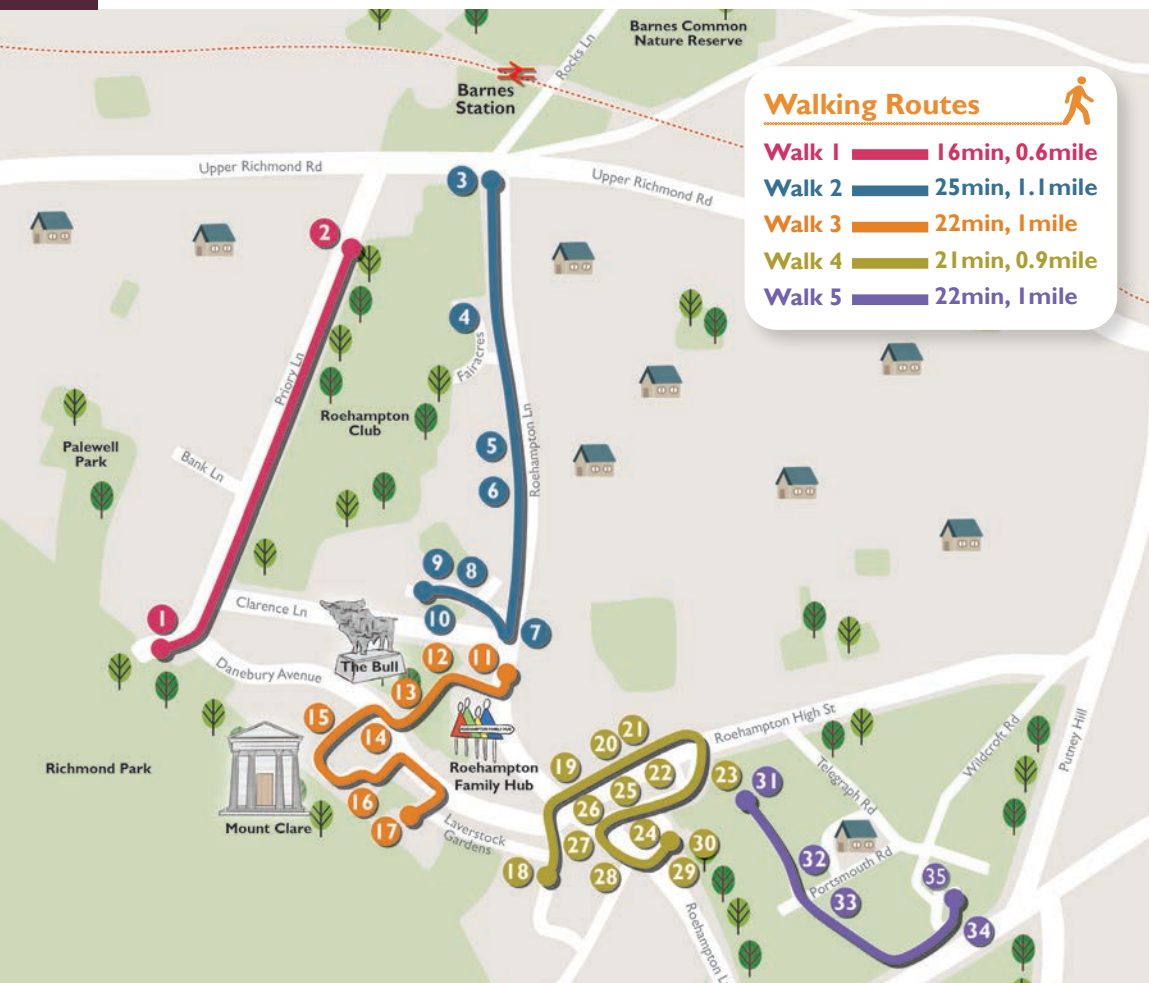


# 02



# ROEHAMPTON WALKS

# THE WALKING ROUTES



## Walking Routes



**Walk 1** 16min, 0.6mile

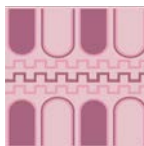
**Walk 2** 25min, 1.1mile

**Walk 3** 22min, 1mile

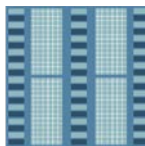
**Walk 4** 21min, 0.9mile

**Walk 5** 22min, 1mile

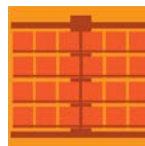
## KEY



**Walk 1**  
Priory Lane



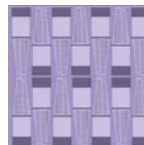
**Walk 2**  
Roehampton  
Lane North



**Walk 3**  
Central  
Roehampton



**Walk 4**  
Roehampton  
Lane South



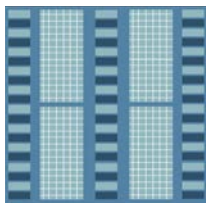
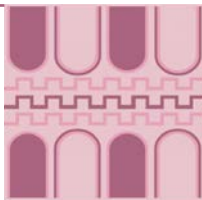
**Walk 5**  
Putney Heath



# THE WALKING ROUTES

## WALK 1: PRIORY LANE

- 1 Roehampton Gate
- 2 The Priory Hospital

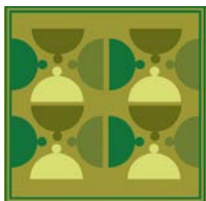
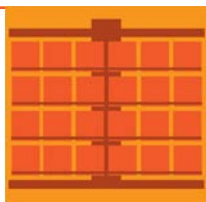


## WALK 2: ROEHAMPTON LANE N

- Thatched House 3
- Fairacres 4
- Southlands College & Digby 5
- Stuart College 6
- Old Lodge Chapel 6
- Roehampton House 7
- Grove House Gates and Lodge 8
- Grove House Mausoleum 9
- Grove House and Gardens 10

## WALK 3: CENTRAL ROEHAMPTON

- 11 Downshire House
- 12 Alton Estate
- 13 The Bull
- 14 Minstead Gardens Bungalows
- 15 Mount Clare
- 16 Portswood Place Mural
- 17 Maryfield Convent

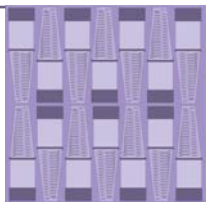


## WALK 4: ROEHAMPTON LANE S

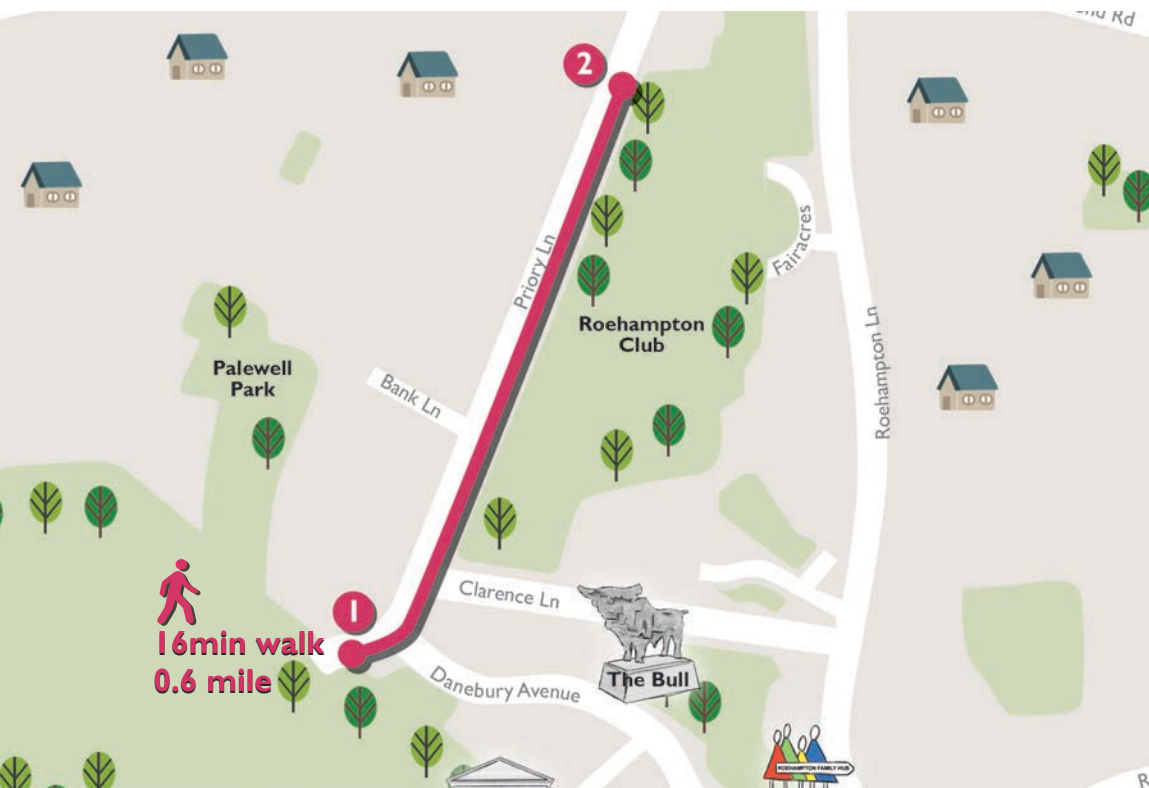
- Parkstead House 18
- Kings Head 19
- Angel 20
- Roehampton High Street 21
- St Mary's Convent 22
- Treville Street 23
- Medfield Street 24
- Drinking Fountain 25
- Montague Arms 26
- St Joseph's Catholic Church 27
- Cornerstone 28
- The Church School 29
- Holy Trinity Church 30

## WALK 5: PUTNEY HEATH

- 31 War memorial, Putney Heath
- 32 Bowling Green Close
- 33 Bowling Green Cottage
- 34 Obelisk
- 35 The Telegraph



# WALK 1: PRIORY LANE



## KEY LOCATIONS



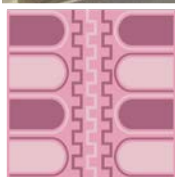
Roehampton  
Gate



The Priory  
Hospital

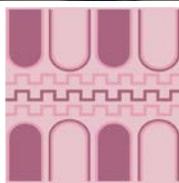
## 1 ROEHAMPTON GATE

This walk starts at Richmond Park's Roehampton Gate. At almost 1,000 hectares Richmond Park is the largest of the Royal Parks. It has a varied landscape, hills, ponds, plantations, gardens, and abundant wildlife (it is home to 300 red and 350 fallow deer), it is very popular. The Park's walls and enclosures were built by Charles I to ensure an adequate number of deer for hunting. Roehampton Gate and Roedean Crescent contain many sought after detached houses which are worth noting.



## THE PRIORY HOSPITAL 2

This impressive building dates back to the 1700's when it was a stuccoed villa. It was extended in 1840-1 for Sir James Knight Bruce, an eminent judge, and again in the 1860's when it became a private nursing home. It is in a pseudo-Tudor style with pinnacled buttresses and has become well known in recent years due to the help it has given to a number of celebrities.



# WALK 2: ROEHAMPTON LANE NORTH



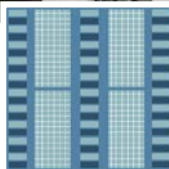
## KEY LOCATIONS

3 Thatched House		4 Fairacres	5 Southland College & Digby Stuart College
6 Old Lodge Chapel		7 Roehampton House	
8 Grove House Gates and Lodge	9 Grove House Mausoleum	10 Grove House and Gardens	

### 3 THATCHED HOUSE

This walk begins at the junction of Roehampton Lane and Upper Richmond Road where Wandsworth's only building with a thatched roof is found. A building has stood on this site since 1869 and, on a 1930's map, it is described as a "thatched cottage". About 150 yards further down Roehampton Lane is the Roehampton Club.

Then walking down Roehampton Lane to next stop - Fairacres.



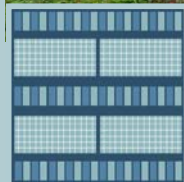
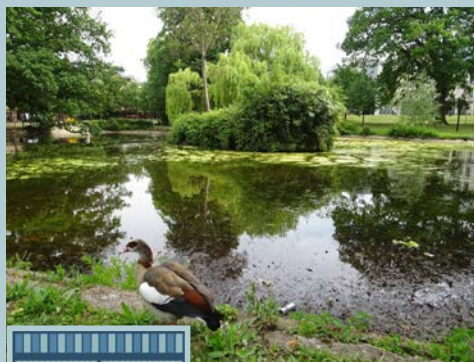
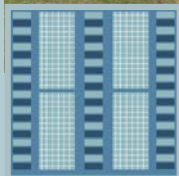
### FAIRACRES 4

Fairacres is a crescent shaped block of flats by Minoprio and Spencely architects. It was built in 1936 and is set in attractive gardens with tapering entrance halls leading to circular stairs. A little further along Roehampton Lane is the next stop - Southlands College.

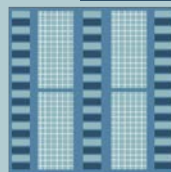


## 5 SOUTHLANDS COLLEGE & DIGBY STUART COLLEGE

Southlands is today part of Roehampton University and was founded by the Methodist Church in 1872. Its modern campus was opened in 1997 and this still houses the University's Business School and its department of Media, Culture and Language. In keeping with its Methodist origins the College seeks to provide an 'open, valuing, challenging and learning' community. Walking diagonally from the college across Roehampton Lane, you will see Sacred Hearts School.

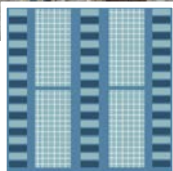


Digby Stuart stands on the site of Elm Grove which stood from 1792 until 1940 and was connected to another property by a tunnel under Roehampton Lane. It was acquired by the Society of the Sacred Heart in 1848 and the name of the College comes from two of the Society's superiors, the Reverend Mothers Digby and Stuart.



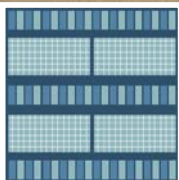
## 6 OLD LODGE CHAPEL

Built in 1853 as a chapel for the use of strangers and destroyed during the Second World War. Now part of Digby Stuart College and it is a Grade II listed building.



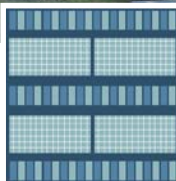
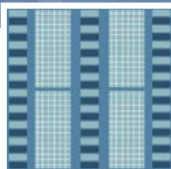
## ROEHAMPTON HOUSE 7

Roehampton House was designed by Thomas Archer and built for Thomas Cary from 1710-1712. After several changes in ownership it was bought by Arthur Grenfell who commissioned Edward Lutyens (1869-1944), the pre-eminent architect of this day, to carry out works that trebled its size. It formed the central block of Queen Mary's Hospital (famous for pioneering work among amputees particularly during the Second World War) when it moved into the premises in 1920. The Hospital moved to larger, nearby, premises in 2006 and Roehampton House has been converted to luxury apartments. Opposite the House, our next stop - a Grade I listed building, is the entrance to the University's Grove House (Froebel College).



## 8 GROVE HOUSE GATES AND LODGE

The decorated, wrought iron, gates probably originate from the early nineteenth century when Roehampton Lodge (as it was then known) was built. Close to the entrance, which is flanked by the Lodge, and partly hidden by foliage, is the Grove House Mausoleum.

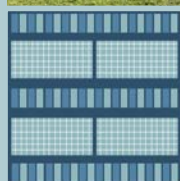
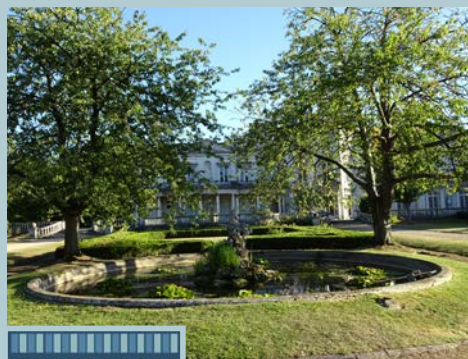


## GROVE HOUSE MAUSOLEUM 9

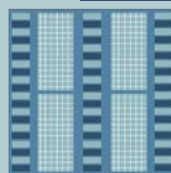
Built around 1862 for Pauline Duvernet, a ballerina, by William Burn. The Mausoleum is in a finely detailed Romanesque style with an equiangular gable above each arm. Close by is Grove House which today houses the University's Froebel College.

## 10 GROVE HOUSE AND GARDENS

This impressive building, in magnificent landscaped grounds, dates from 1777. It originally consisted of a nine bay front with a projecting 3 bay centre incorporating an imposing Venetian window. In 1851 extensive additions were carried out by William Burn in an Italianate style for Pauline Duvernety.



These included sumptuous internal panelling. Grove House is a Grade II listed building. Its gardens were laid out in the mid eighteenth century whereby the lake was enlarged, and later an artificial bridge was added by Sir Joshua Vanneck in the late eighteenth century. At the eastern end of the lake is the "Rooks Grotto" constructed in the 1890's to conceal an Ice House. The Gardens are a Grade II listed Registered Historic Park and Garden.



# WALK 3: CENTRAL ROEHAMPTON



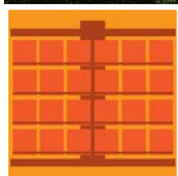
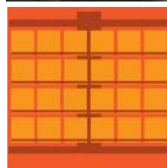
## KEY LOCATIONS

<b>11</b> Downshire House		<b>12</b> Alton Estate	
<b>13</b> The Bull		<b>14</b> Minstead Gardens Bungalows	
<b>15</b> Mount Clare		<b>16</b> Portswood Place Mural	<b>17</b> Maryfield Convent



## 11 DOWNSHIRE HOUSE

Downshire House, designed by R. F. Brettingham in 1770, was home to the Marchioness of Devonshire from the 1790s to 1836 and includes a summer house. Auctioned in 1920, it was praised for its rural yet accessible location near several commons and the village of Roehampton. Now part of the University of Roehampton, it is a Grade II Listed Building, with a footpath linking it to the Alton Estate and Tangley Grove.



## ALTON ESTATE 12

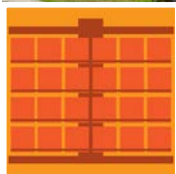
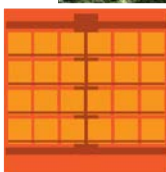
The Le Corbusier inspired Alton Estate houses some 10,000 people in its 3,350 bungalows, flats and maisonettes on a site of about 85 hectares. It provided new homes for many inner-city dwellers in the 1950's and 1960's. The debt to Le Corbusier is probably best seen in the five concrete slab blocks of stilted maisonettes along Highcliffe Drive.

The 10 eleven storey point blocks to the north of Kingston Road (the A3) were built between 1952 and 1955 and carefully designed to blend in with the landscape. The Estate has featured as a back drop to many popular film and TV programmes including Fahrenheit 451, The Sweeney and Minder. The Alton Estate has won numerous architectural awards and much of it enjoys Grade II Listed Building status.



## 13 THE BULL

This popular sculpture was commissioned by the London County Council and completed in 1961 by Robert Clatworthy. It is in bronze and has Grade II Listed status.

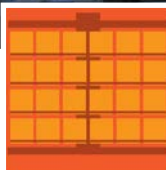
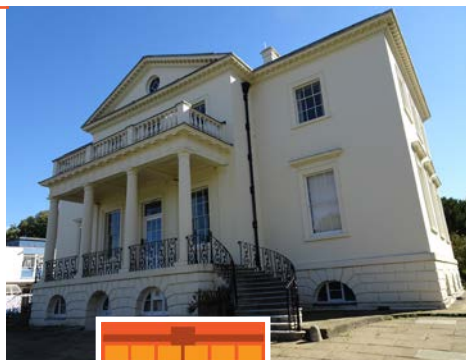


## MINSTEAD GARDENS BUNGALOWS 14

The staggered terraces of bungalows were built in 1957-8 for elderly residents. The small scale of these bungalows was a deliberate counterpoint to the scale of the surrounding blocks. The Plane tree behind 14 Minstead Gardens is about 125 years old and, stands at some 26 metres, it is believed to be the tallest tree in the borough.

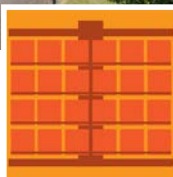
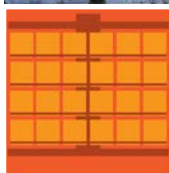
## 15 MOUNT CLARE

Mount Clare, a Grade I listed building, was designed by Henry Holland with landscaping by Capability Brown and built in 1773 for George Clive, cousin of Robert Clive, later owned by Robert Hanbury MP. The house was visited by Disraeli and appears as "Belmont" in his 1870 novel Lothair. The grounds also feature a Greek Doric "Temple," relocated from Bessborough House in 1913. Today, the house is used as offices by Roehampton University.



## 16 PORTSWOOD PLACE MURAL

This colourful and attractive mural, featuring local people and places, was created by residents and school children in 1988. The final site on this walk is Maryfield Convent and is found in Laverstoke Gardens.



## MARYFIELD CONVENT 17

The Order of the Poor Servants of the Mother of God was founded in 1869 by Francis Margaret Taylor who became a Catholic whilst working with Florence Nightingale during the Crimean War. The Sisters worked with vulnerable members of society, especially women and children. In 1927 Roehampton Court (built 1914) and 5 hectares of land was purchased from Lancelot Smith of Mount Clare. In 1944 the building was destroyed during an air raid.

The present building was completed in 1952 and operates today as the Kairos Centre, a tranquil retreat for groups and individuals. Members of the public cannot access these grounds unless attending an event.



# WALK 4: ROEHAMPTON LANE SOUTH



## KEY LOCATIONS

<b>18</b> Parkstead House	<b>19</b> Kings Head		<b>20</b> Angel	<b>21</b> Roehampton High Street	
	<b>22</b> St Mary's Convent	<b>23</b> Treville Street		<b>24</b> Medfield Street	<b>25</b> Drinking Fountain
<b>26</b> Montague Arms	<b>27</b> St Joseph's Catholic Church	<b>28</b> Cornerstone	<b>29</b> The Church School	<b>30</b> Holy Trinity Church	



## 18 PARKSTEAD HOUSE

Parkstead House was commissioned by William Ponsonby, 2nd Earl of Bessborough, and designed by Sir William Chambers (the architect of Somerset House). It was finished in 1763 and named Parkstead House. It was later renamed Bessborough House. It is a Palladian villa of five bays with a centrepiece of a six column Ionic portico approached by a twin curved flight of stairs.



The House was filled with Bessborough's collection of art treasures and its grounds once stretched from Richmond Park to Kingston Road. It was taken over by the Jesuits in 1861 and renamed Manresa House. In 1878 St Joseph's Church was built in the grounds. A frequent visitor at the time was the poet and priest Gerard Manley Hopkins. It is now a part of Roehampton University and is a Grade I Listed Building. Walk down Holybourne Avenue and cross Roehampton Lane to see two historic public houses.





## 19 KINGS HEAD

The Kings Head (a Grade II Listed Building), at 1 Roehampton High Street, can be traced back to the end of the War of the Roses in 1485 when it was called The Bull. The present building, containing a fireplace dated 1573, and its two weather-boarded storeys have been much altered over the years.

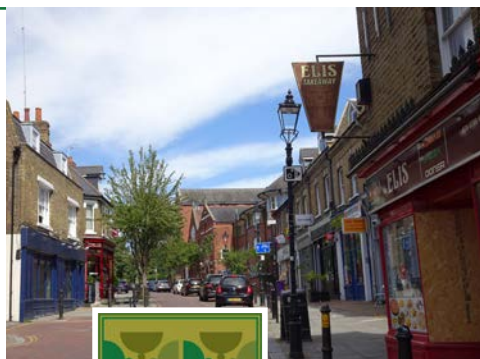


## ANGEL 20

The Angel is almost next door to the Kings Head. Little is known about the origins of this public house other than it opened in, or before, 1786. The first landlord was a William Sowster who was there until 1805. The Angel was rebuilt in 1893 with a skittle ground being added.

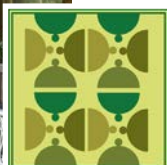
## 21 ROEHAMPTON HIGH STREET

Roehampton High Street contains many fine buildings. Some, such as numbers 24 and 26 still have original weather boarding and tiled or pantiled roofs. On the other side of the High Street is Roehampton's second convent.



## 22 ST MARY'S CONVENT

The Order of the Poor Servants of the Mother of God was founded by Francis Margaret Taylor in 1869. The Order was established in these premises in 1876 and an Orphanage was begun. The Convent's chapel was built in 1889. After World War Two the Convent began providing care and accommodation for those with learning disabilities and this continues today.

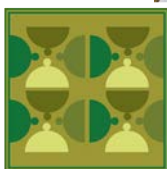


## TREVILLE STREET 23

This attractive little street which leads off the High Street, contains some historic villas and houses. It leads into Medfield Street.

## 24 MEDFIELD STREET

Medfield Street contains many attractive houses. Some date back to 1870.



## 25 DRINKING FOUNTAIN

The Drinking Fountain and horse troughs are found at the junction of Roehampton Lane and Medfield Street. It was built in 1882 and modelled on an Italian tomb seen by Sir Frederick Lance. The bronze fountain group is by Henry Dasson and the granite troughs came from Aberdeenshire. It has Grade II Listed Building status.

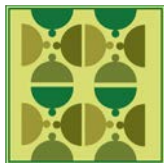


## MONTAGUE ARMS 26

The Montague Arms is located at 3 Medfield Street. It is a much altered, three storied, seventeenth century inn which makes it one of Wandsworth's oldest secular buildings. It was built as a cottage but became a beer shop in the 1860's. It survived as a public house until 2006 and is a Grade II Listed Building.

## 27 ST JOSEPH'S CATHOLIC CHURCH

Until the foundation of St Joseph's parish, the parish church of Roehampton was St Mary Magdalen's in Mortlake. After building a temporary church on the Manresa House estate (opposite the King's Head) the foundation stone for a permanent church was blessed on 16 July 1878. Designed by Frederick Walters, in English Gothic style, St Joseph's was consecrated on 24 July 1883. Leaving the church turn right for the Cornerstone.

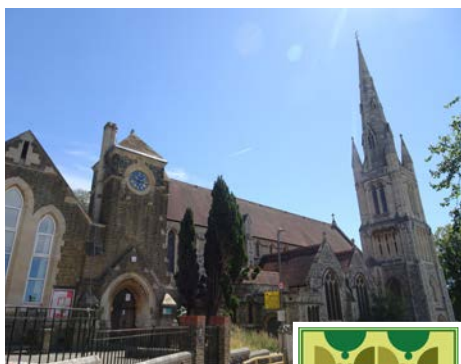


## CORNERSTONE 28

The 'Cornerstone' was the original Parish Hall for Roehampton. This attractive building, now used by Wandsworth Council's Western Area Housing Team, was built in the late nineteenth century. Opposite the Cornerstone is the Church School and Holy Trinity Church.

## 29 THE CHURCH SCHOOL

In 1835 Lord Dover, and others, obtained permission to use some waste land to build a school for local children. It is known today as the Roehampton Church of England Primary School. The bricks by the entrance still show the marks left by pupils during the nineteenth century when they used them to sharpen their slate pencils. It is interesting to note the following entry from the school's log book for 17 March 1869 when 'ordinary progress was interrupted in the afternoon owing to some of the boys being absent on account of the Oxford and Cambridge boat race.'



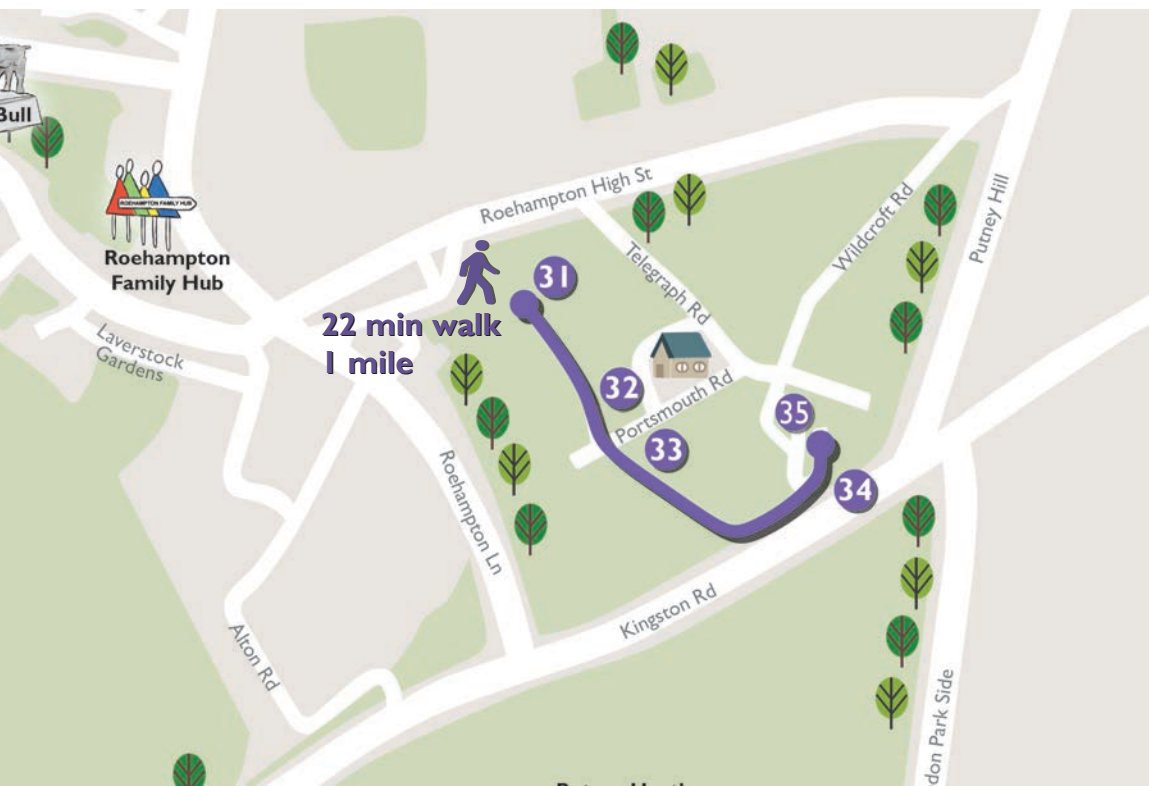
## HOLY TRINITY CHURCH 30

The Church is in Ponsonby Road which contains some picturesque semi-detached houses. In 1862 Roehampton became a separate parish with the then Holy Trinity (there have been several) as its parish church. By 1897 the church was too small and a new church, designed by Fellowes Prynne, was built on part of the school grounds. It opened in 1898 and in a Gothic revival style, of Corsham stone with a spire of some 60 metres. It is a Grade II Listed Building.





# WALK 5: PUTNEY HEATH

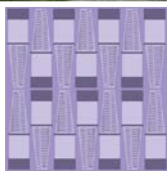


## KEY LOCATIONS

<b>31</b> War Memorial, Putney Heath			<b>32</b> Bowling Green Close	
<b>33</b> Bowling Green Cottage			<b>34</b> Obelisk	
	<b>35</b> The Telegraph			

## 31 WAR MEMORIAL, PUTNEY HEATH

This memorial originally honoured local men who fought in the First World War but was itself damaged by enemy action in the Second World War. It was restored in 1952 in honour of the men, and women, who fought and died in both wars. From the Memorial walk in a southerly direction to Bowling Green Close.



## BOWLING GREEN CLOSE 32

Situated on the site of Bowling Green House (which from 1690 until 1760 had one of the most famous bowling greens in England) the Close has a number of attractive private houses. William Pitt MP, Britain's youngest ever Prime Minister, lived in Bowling Green House from 1804 until his death in 1806.

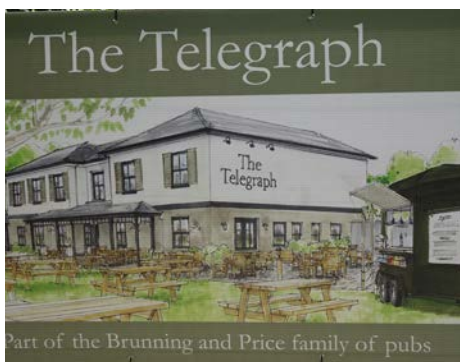
## 33 BOWLING GREEN COTTAGE

Bowling Green Cottage is found at the southern end of Bowling Green Close in Portsmouth Road. It was part of the estate of Bowling Green House (see above) and is thought to have been the estate manager's residence. From the Cottage walk along Portsmouth Road and find the Obelisk hidden away near Tippet's Corner.



## 34 OBELISK

The obelisk inscription marks the laying of its foundation stone by John Sawbridge, Lord Mayor of London, 110 years after the Great Fire, in memory of a fireproof building invention. Nearby, David Hartley built the 'Fireproof House' (later Wildcroft) in 1776 to showcase fire-resistant design—famously demonstrated to George III and Queen Charlotte as they dined above a burning floor. The obelisk stands near Wildcroft Manor and The Telegraph pub on Wildcroft Road.



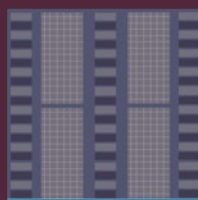
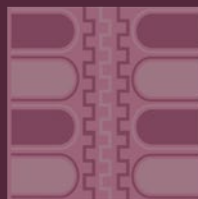
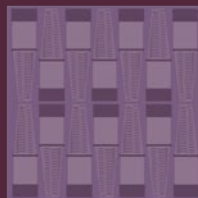
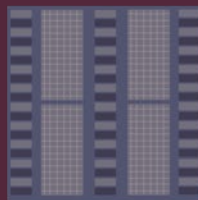
## THE TELEGRAPH 35

This popular and attractive pub is named after The Telegraph which was one of four semaphore chains established by the Admiralty in 1796 to warn against invasion by the French Navy.

Unfortunately, London's windy and smoky atmosphere rendered the system all but useless and a runner was required to take warning messages by foot! The Telegraph is a popular pub/ restaurant and an excellent place to conclude this walk!

# 03

## OTHER LOCAL LANDMARKS





# OTHER LOCAL LANDMARKS

## Please note: some restricted access to these landmarks

As part of the heritage walking routes in Roehampton, we've highlighted buildings and sites that are open to the public or easily visible from public streets. However, there are also a number of notable historic buildings in the area that are not accessible to the public.

These sites are included here for their historical importance, but we

kindly ask that you do not attempt to access these private properties. In some cases, it may be possible to arrange a private viewing — we encourage you to check online or contact the owners directly for more information.

Thank you for helping us preserve and respect Roehampton's rich heritage.





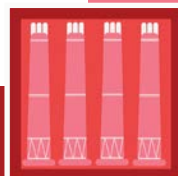
## PUTNEY VALE CEMETERY

The Cemetery opened in 1891, covers approximately 20 hectares and has seen over 57,000 burials. A Crematorium was added in 1938. Among the notable people either buried or cremated here are Arthur Askey (comedian), Stanley Baker (actor), Howard Carter (explorer), Sandy Denny (musician), Francis Durbridge (author), Alexander Kerensky (politician), Jim Laker (cricketer), David Lean (film director), Kenneth More (actor),



Anthony Nolan (whose death led to the formation of a bone marrow register), Jennifer Patterson (chef) and Joan Sims (actor).

**Note - It is open to the public. A guide to the Cemetery is available from the Office in Central Drive.**

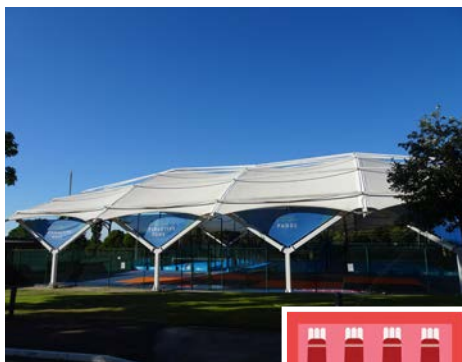


## BANK OF ENGLAND SPORTS GROUND

The Bank of England Sports Ground stands on the grounds of Petersham, later Clarence Lodge. It is now a private sports club for the Bank's employees and local residents. The largest building, formerly known as The Records Office and now called The Grange, is in a Neo-Georgian style. It was completed in 1910 to house the Bank's records and now provides business units. It was used as England's training ground in 1966 when they won the World Cup. Returning to Priory Lane and turning left the National Tennis Centre is soon reached.



**Note - Not accessible to the general public. Visits are allowed if venue is booked for event.**  
**More information on: <https://roehampton.communitysport.aeltc.com/>**



## NATIONAL TENNIS CENTRE

The Lawn Tennis Association's National Tennis Centre opened in 2007 and is a focal point for some of Britain's top players. It has 22 courts, a state-of-the art gymnasium, outdoor sprint track, player accommodation and a world class sports science centre. The Centre is very close to the Priory Hospital. Members of the public cannot access these grounds.

**Note - Not accessible to the general public. Visits are allowed for court booking. More information on: <https://www.lta.org.uk>**

## ROSSLYN PARK RUGBY CLUB

This English National Division I rugby club was founded in 1879 and moved to its current ground in 1956. It has numerous teams, including children's and women's, with a strong community involvement.



Photo credit: <https://rosslynpark.co.uk/facility-hire/>

**Note - Not accessible to the general public. Members can access the landmark. More information on: <https://rosslynpark.co.uk>**

## ROEHAMPTON CLUB

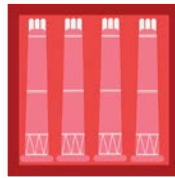


The Roehampton Club was founded in 1901 as a Polo Club. Today this private members' club occupies over 35 hectares of well-maintained grounds. It has over 4,000 members and provides facilities for tennis, golf, squash, croquet, swimming, aerobics, bridge, and poker, and has clinics, a beauty studio, bars, a restaurant and meeting rooms. Carrying on down Roehampton Lane you will soon come to Fairacres. Members of the public cannot access these grounds unless attending an event.

**Note - Not accessible to the general public. Members can access the landmark. More information on: <https://www.roehamptonclub.co.uk>**

## QUEEN MARY'S HOSPITAL

The hospital moved a short distance from its cramped accommodation in Roehampton House and other buildings to new premises in Roehampton Lane in 2006. Among the services offered are outpatient diagnostic and treatment clinics; a day hospital for the elderly; a minor injuries unit; specialist clinics; elderly, amputee and neurorehabilitation services and limb fitting. A little further along Roehampton Lane is the site of Roehampton House which is where the Hospital used to be, marked by a rook on a plinth.



**Note - It is accessible to the public although please do not obstruct patient and visitors.**

## CEDARS COTTAGES

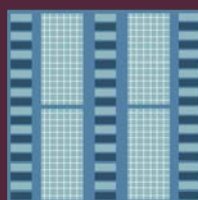
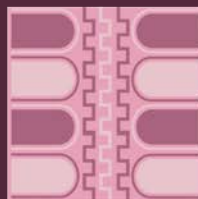
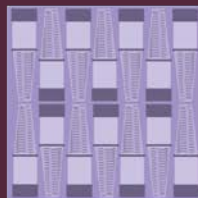
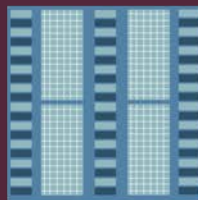
These are probably the remains of the northern service wing of Cedars Court, an eighteenth century house demolished in the 1930's.



**Note - Not accessible to the general public, can be viewed from the footpath.**

# 04

## MEET THE BUSINESSES





# INTRODUCTION

## Discover Local Gems Along the Trail

As you explore Roehampton's rich heritage on our walking routes, why not take a moment to enjoy some of the fantastic local businesses along the way? From cosy cafés and family-run shops to welcoming pubs and independent restaurants, Roehampton has plenty to offer beyond its historic sites.

These local businesses are a valued part of the community and contribute to the character of

the area. Stopping by for a coffee, snack, or browse not only gives you a chance to rest and recharge—it also supports the people who help keep Roehampton vibrant and thriving.

So whether you're grabbing a bite, or just soaking in the atmosphere, we encourage you to take full advantage of everything Roehampton has to offer.

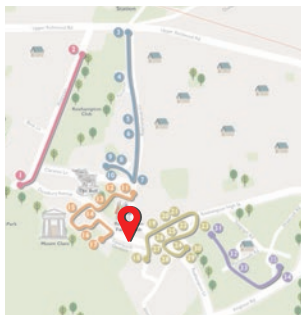


# CAFE JOY



Location:  
49 Danebury  
Avenue, SW15  
4DQ

Type: Coffee Shop



Location Plan

Adane Woldu former camera shop owner, has been living in Roehampton since 2004 and always felt the need for a local café in the area so decided that this was going to be his next business venture. Three years later, in August 2012, he found a unit on Danbury Avenue where he opened Café Joy. Whilst used to retailing, he had no experience in catering – ‘it took me ages to make a good cappuccino’. He added, ‘now locals love our hot drinks and my philosophy in the café is to make them individually crafted to individual taste’. Adane’s customers include students, pensioners as well as others who live, work, or visit nearby Richmond Park. Café Joy triggered the arrival of other businesses onto Danebury Avenue and Adane feels he spearheaded the changes.

# CHATKA FRAANKA



Location:  
2 Medfield Street,  
SW15 4JZ

Type: Deli &  
Grocery Store



Location Plan

After 20 years working and managing hotels and restaurants, Patrizia and Marek Szwagrowski opened Chatka Franka in December 2020 (Franka is the name of their young son). The family have been living in Roehampton for the past 7 years. Their decision to open a specialist Polish deli and grocery store with off licence was triggered when Patrizia lost her job during the first lockdown in the pandemic. 'Most of our friends were telling us that it was very risky to start a new business during the pandemic and we should think twice however we didn't listen to them'. She added 'Marek and I were very clear that we wanted to create something more than just a shop, it had to be really community focused. The lockdown period helped us get to know the locals really well.'

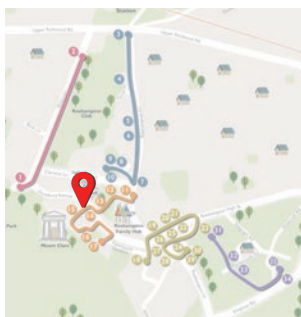
# CHANTELLE'S COMMUNITY KITCHEN



Location:  
4 Portswood Place,  
SW15 4ED

Type: Community

Chantelle Bent founded Chantelle's Community Kitchen in August 2023 to support her local community during the cost-of-living crisis. The kitchen offers free, nutritious homemade meals and groceries to residents every Tuesday. There is a Friday brunch café and monthly cooking demonstrations, providing opportunities for learning, connection, and empowerment by encouraging locals to learn new skills. Chantelle's vision and dedication have created a welcoming space for neighbours to connect, share stories, and support each other. An inspiring example of how one person's vision can foster resilience and unity in the heart of the community, making the kitchen a beloved fixture in Roehampton.



Location Plan



# THE RIGHT PLAICE



Location:  
59 Danebury  
Avenue  
SW15 4DQ

Type: Restaurant

A familiar face on Danebury Avenue, The Right Plaice has been part of the Roehampton community for many years. Known for its welcoming atmosphere and loyal local following, it's more than just a place to eat - it's a neighbourhood landmark.

Whether you're a regular customer or a first-time visitor, for good food and friendly service, come to The Right Plaice.



Location Plan



# ROEHAMPTON POST OFFICE



Location:  
35 Roehampton  
High Street  
SW15 4HL

Type: Post Office

The Post Office at the corner of Roehampton High Street and Rodway Road has changed as new owner, Gowtham Varatharasa explained, 'it's a Post Office with convenience food drinks, and more. Coming from a family of entrepreneurs, it wasn't a surprise when Gowtham, who spent three years as a store manager for Sainsbury's decided to go it alone and start his own business.

Gowtham chose a franchise as he said he wanted 'a well-known brand' behind him and the Post Office seemed like the right choice. 'Roehampton is a great location for my business and the place has a really strong community'.



Location Plan

# EAST CHEMIST



Location:  
16 Roehampton  
High Street  
SW15 4HJ

Type: Pharmacy

A long-standing pillar of the Roehampton community, East Chemist is owned and operated by Mr. and Mrs. Munir, both qualified pharmacists with over 20 years of experience. Known for their personalised care and expert advice, the Munirs have built a reputation for trust and reliability. In addition to dispensing prescriptions and offering everyday health support, East Chemist also provides a comprehensive travel clinic and a dedicated weight loss programme, helping residents stay healthy at home and abroad. With a focus on community well-being, East Chemist continues to be a go-to destination for professional, friendly, and accessible healthcare.



Location Plan

# VILLAGE CAFE



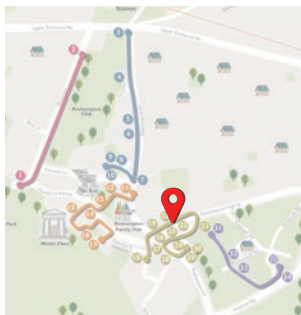
Location:  
17a Roehampton  
High Street  
SW15 4HL

Type: Café

Situated in the heart of Roehampton, The Village Café is a warm and welcoming spot known for its home-style cooking, fresh coffee, and friendly atmosphere.

Now run by Ali Bezgin and his family, the café continues to be a cherished part of the community, offering a personal touch that makes every visit feel like home.

Whether you're popping in for a hearty breakfast, a relaxed lunch, or just a chat over coffee, The Village Café is a place where good food and great company come together.



Location Plan

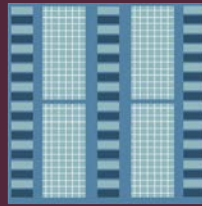
# ROEHAMPTON WALKS

## DESIGN SECRETS

Each walk has its own designed logo based on details from landmarks along the walk.



**Walk 1:**  
Arches and  
architecture  
of the Priory  
Hospital



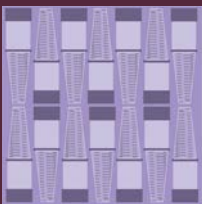
**Walk 2:**  
Window  
and brick  
work from  
Roehampton  
House



**Walk 3:**  
Buildings from  
the Alton  
Estate



**Walk 4:** The  
dome of the  
Drinking  
Fountain  
structure



**Walk 5:**  
The Obelisk  
structure



**Other  
Landmarks:**  
Columns from  
the structure in  
the cemetery



# LOOKY ROOKY!

## THE ROEHAMPTON ROOKFINDER TRAIL

You can also explore Roehampton by searching for our five funky Rooks on your smartphone! Watch them come to life digitally as you find each one. Download the app on Android or iPhone at [www.wandsworth.gov.uk/roehampton-walking-trails](http://www.wandsworth.gov.uk/roehampton-walking-trails), find Looky Rooky and you're ready to hunt.

Can you find Rambling, Rad, Resilient, Rockstar and Razzle Dazzle Rooks and help them collect all their belongings? The trail has 35 stops in total (7 for each Rook) and a special face filter prize when you find them all. Fun for all ages!



Scan here to  
download the  
letsARgo app and  
go straight to Looky  
Rooky



Look out for Rook stickers at each stop!

