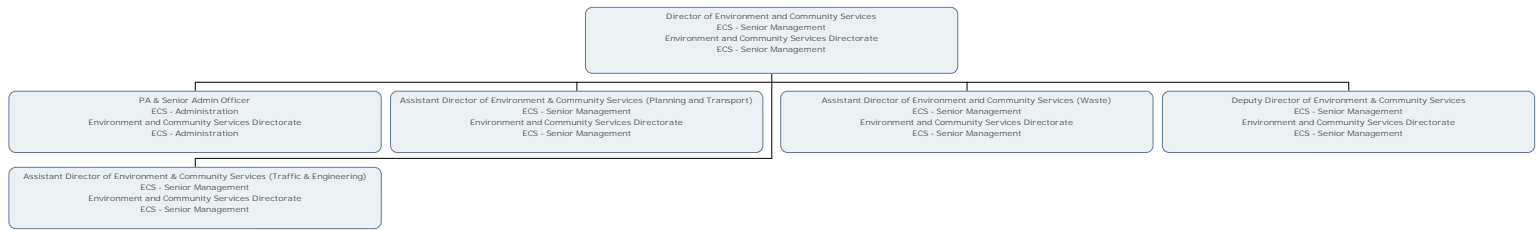


ECS





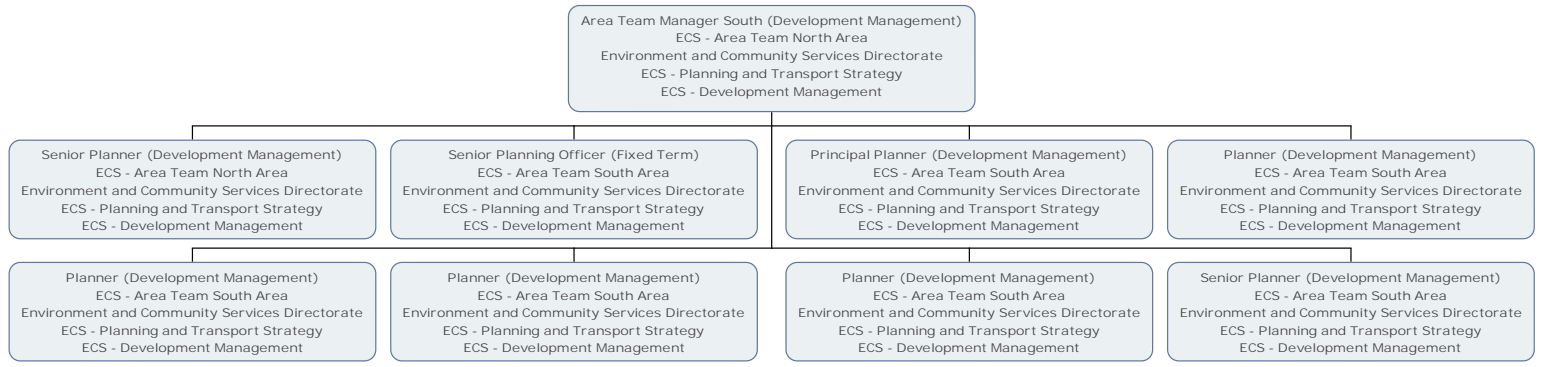
Head of Development Management (Richmond)
ECS - Planning and Transport Senior Management
Environment and Community Services Directorate
ECS - Planning and Transport Strategy
ECS - Planning and Transport Senior Management

Area Team Manager South (Development Management)
ECS - Area Team North Area
Environment and Community Services Directorate
ECS - Planning and Transport Strategy
ECS - Development Management

Area Team Manager North (Development Management)
ECS - Area Team South Area
Environment and Community Services Directorate
ECS - Planning and Transport Strategy
ECS - Development Management

Planning Technical Support Manager
ECS - Technical Support
Environment and Community Services Directorate
ECS - Planning and Transport Strategy
ECS - Development Management

Applications Manager (Richmond)
ECS - Strategic Development
Environment and Community Services Directorate
ECS - Planning and Transport Strategy
ECS - Strategic Development



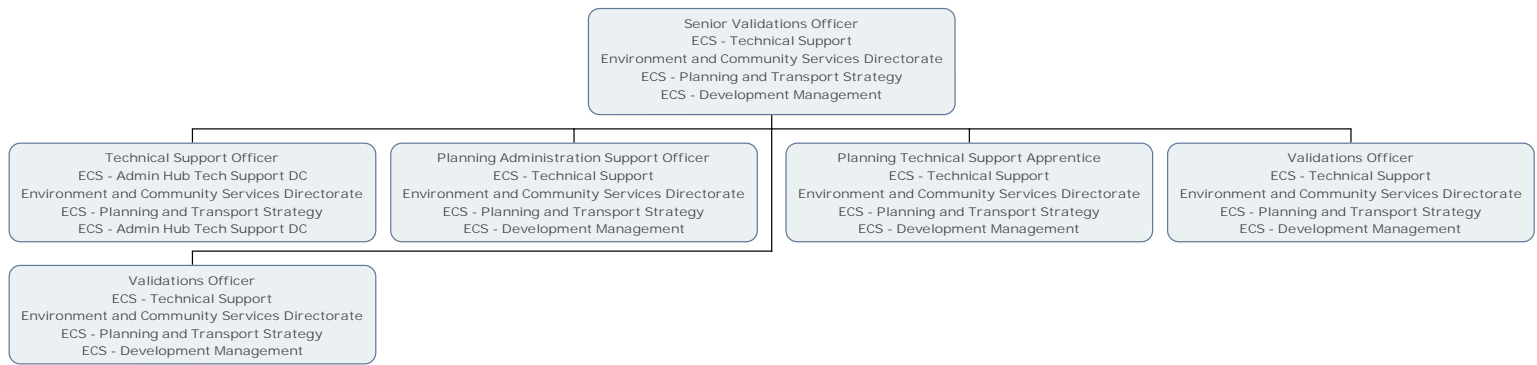


Planning Technical Support Manager
ECS - Technical Support
Environment and Community Services Directorate
ECS - Planning and Transport Strategy
ECS - Development Management



Senior Planning Administration Support Officer
ECS - Technical Support
Environment and Community Services Directorate
ECS - Planning and Transport Strategy
ECS - Development Management

Senior Validations Officer
ECS - Technical Support
Environment and Community Services Directorate
ECS - Planning and Transport Strategy
ECS - Development Management



Applications Manager (Richmond)
ECS - Strategic Development
Environment and Community Services Directorate
ECS - Planning and Transport Strategy
ECS - Strategic Development

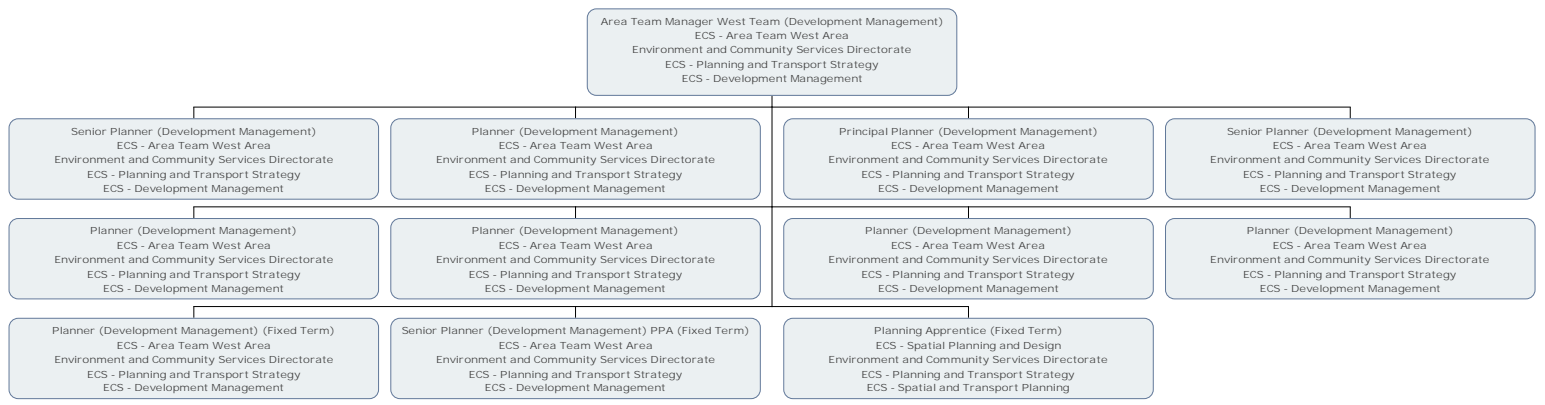


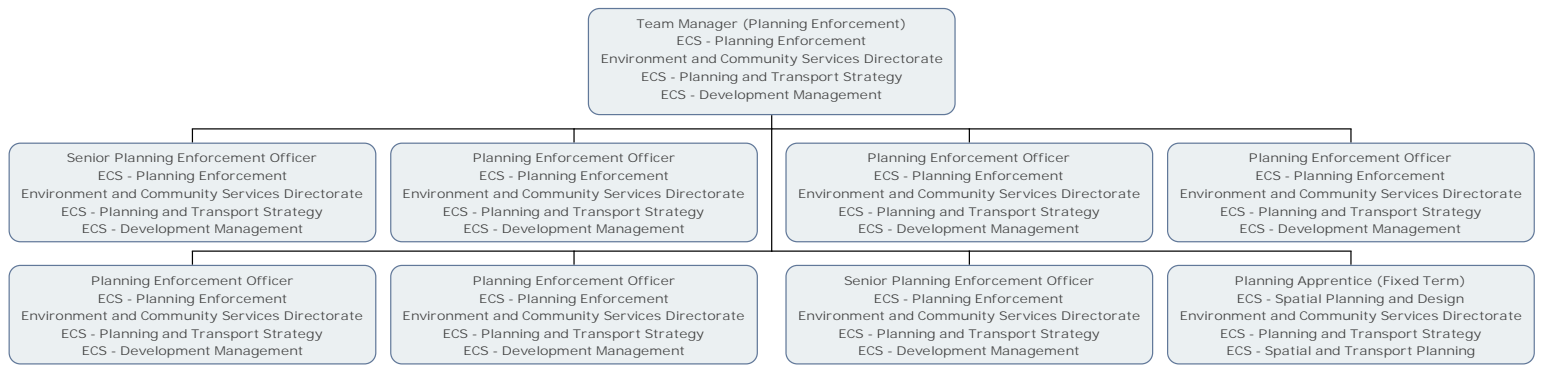
Senior Planner (Strategic Developments - Richmond)
ECS - Strategic Development
Environment and Community Services Directorate
ECS - Planning and Transport Strategy
ECS - Strategic Development

Principal Planning Officer (Fixed Term)
ECS - Strategic Development
Environment and Community Services Directorate
ECS - Planning and Transport Strategy
ECS - Strategic Development











Information and Planning Obligations Team Manager
ECS - Information and Planning Obligations
Environment and Community Services Directorate
ECS - Planning and Transport Strategy
ECS - Spatial and Transport Planning

Senior CIL and S106 Officer
ECS - Information and Monitoring
Environment and Community Services Directorate
ECS - Planning and Transport Strategy
ECS - Spatial and Transport Planning

Senior CIL and S106 Officer
ECS - Information and Monitoring
Environment and Community Services Directorate
ECS - Planning and Transport Strategy
ECS - Spatial and Transport Planning

Senior CIL and S106 Officer
ECS - Information and Monitoring
Environment and Community Services Directorate
ECS - Planning and Transport Strategy
ECS - Spatial and Transport Planning

CIL and S106 Officer
ECS - Information and Monitoring
Environment and Community Services Directorate
ECS - Planning and Transport Strategy
ECS - Spatial and Transport Planning

CIL and S106 Officer
ECS - Information and Monitoring
Environment and Community Services Directorate
ECS - Planning and Transport Strategy
ECS - Spatial and Transport Planning

CIL and S106 Officer
ECS - Information and Monitoring
Environment and Community Services Directorate
ECS - Planning and Transport Strategy
ECS - Spatial and Transport Planning

Senior S106 Project Officer
ECS - Information and Monitoring
Environment and Community Services Directorate
ECS - Planning and Transport Strategy
ECS - Spatial and Transport Planning

CIL and S106 Officer
ECS - Information and Monitoring
Environment and Community Services Directorate
ECS - Planning and Transport Strategy
ECS - Spatial and Transport Planning

CIL and S106 Officer (Permanent)
ECS - Information and Monitoring
Environment and Community Services Directorate
ECS - Planning and Transport Strategy
ECS - Spatial and Transport Planning

S106 Project Officer (Fixed Term)
ECS - Local Land Charges
Environment and Community Services Directorate
ECS - Planning and Transport Strategy
ECS - Spatial and Transport Planning

Local Land Charges Information Manager
ECS - Local Land Charges
Environment and Community Services Directorate
ECS - Planning and Transport Strategy
ECS - Spatial and Transport Planning

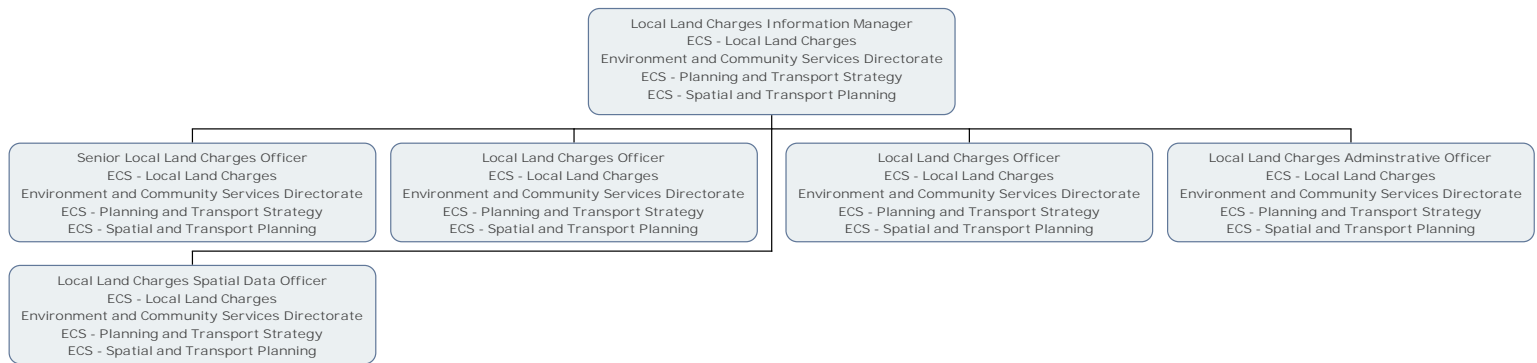
Infrastructure Officer
ECS - Information and Planning Obligations
Environment and Community Services Directorate
ECS - Planning and Transport Strategy
ECS - Spatial and Transport Planning

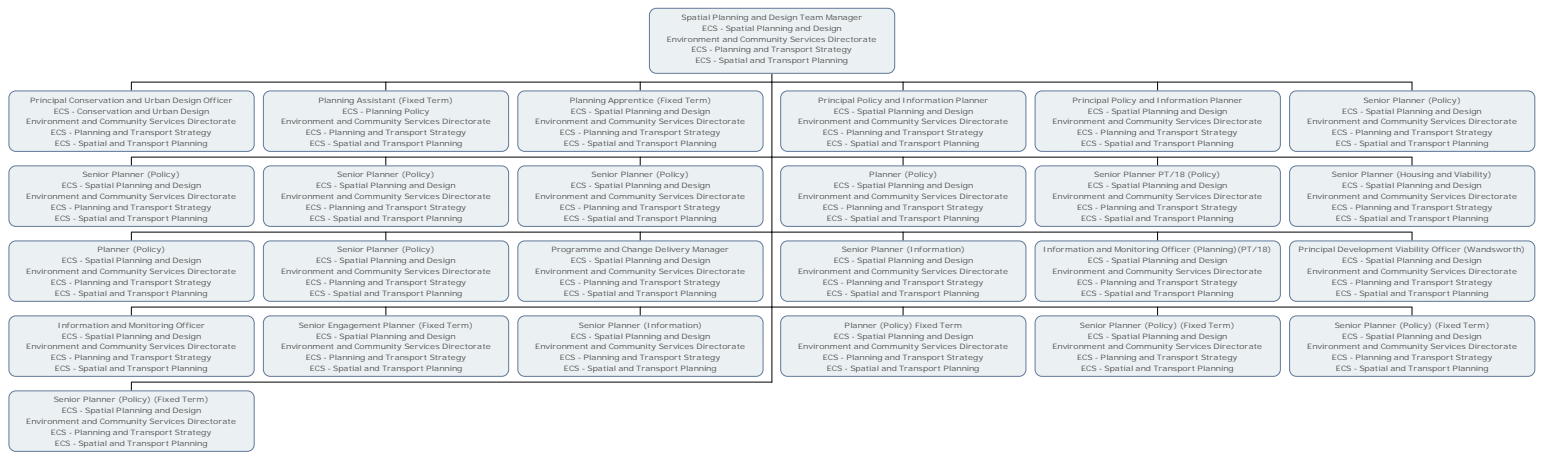
Senior Infrastructure Officer
ECS - Information and Planning Obligations
Environment and Community Services Directorate
ECS - Planning and Transport Strategy
ECS - Spatial and Transport Planning

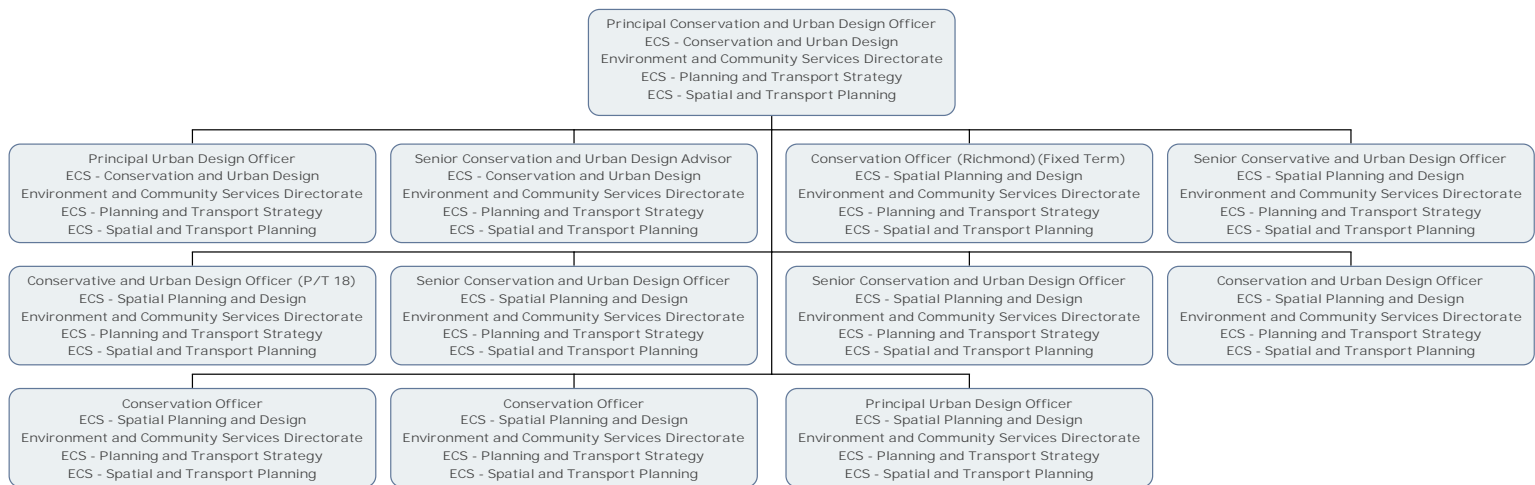
Principal Infrastructure Officer
ECS - Information and Planning Obligations
Environment and Community Services Directorate
ECS - Planning and Transport Strategy
ECS - Spatial and Transport Planning

Infrastructure Assistant (Fixed Term)
ECS - Information and Planning Obligations
Environment and Community Services Directorate
ECS - Planning and Transport Strategy
ECS - Spatial and Transport Planning

Principal CIL and S106 Officer
ECS - Information and Planning Obligations
Environment and Community Services Directorate
ECS - Planning and Transport Strategy
ECS - Spatial and Transport Planning







Senior Conservation and Urban Design Officer
ECS - Spatial Planning and Design
Environment and Community Services Directorate
ECS - Planning and Transport Strategy
ECS - Spatial and Transport Planning

Conservation Officer (Richmond) (Fixed Term)
ECS - Spatial Planning and Design
Environment and Community Services Directorate
ECS - Planning and Transport Strategy
ECS - Spatial and Transport Planning

Principal Policy and Information Planner
ECS - Spatial Planning and Design
Environment and Community Services Directorate
ECS - Planning and Transport Strategy
ECS - Spatial and Transport Planning



Senior Planner Advisor (Fixed Term)
ECS - Planning Policy
Environment and Community Services Directorate
ECS - Planning and Transport Strategy
ECS - Spatial and Transport Planning

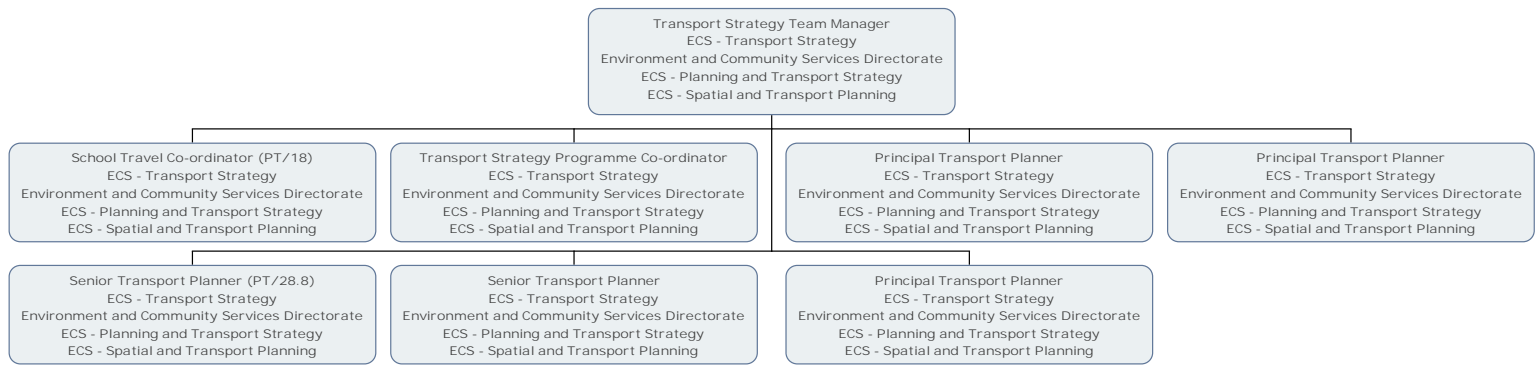
Senior Planner (Policy)
ECS - Spatial Planning and Design
Environment and Community Services Directorate
ECS - Planning and Transport Strategy
ECS - Spatial and Transport Planning

Senior Planner (Policy)
ECS - Spatial Planning and Design
Environment and Community Services Directorate
ECS - Planning and Transport Strategy
ECS - Spatial and Transport Planning

Planning Practice Student
ECS - Spatial Planning and Design
Environment and Community Services Directorate
ECS - Planning and Transport Strategy
ECS - Spatial and Transport Planning

Programme and Change Delivery Manager
ECS - Spatial Planning and Design
Environment and Community Services Directorate
ECS - Planning and Transport Strategy
ECS - Spatial and Transport Planning

Senior Planner (Information) (Fixed Term)
ECS - Information and Monitoring
Environment and Community Services Directorate
ECS - Planning and Transport Strategy
ECS - Spatial and Transport Planning



School Travel Co-ordinator (PT/18)
ECS - Transport Strategy
Environment and Community Services Directorate
ECS - Planning and Transport Strategy
ECS - Spatial and Transport Planning

Transport Planner
ECS - Transport Strategy
Environment and Community Services Directorate
ECS - Planning and Transport Strategy
ECS - Spatial and Transport Planning

Principal Transport Planner
ECS - Transport Strategy
Environment and Community Services Directorate
ECS - Planning and Transport Strategy
ECS - Spatial and Transport Planning

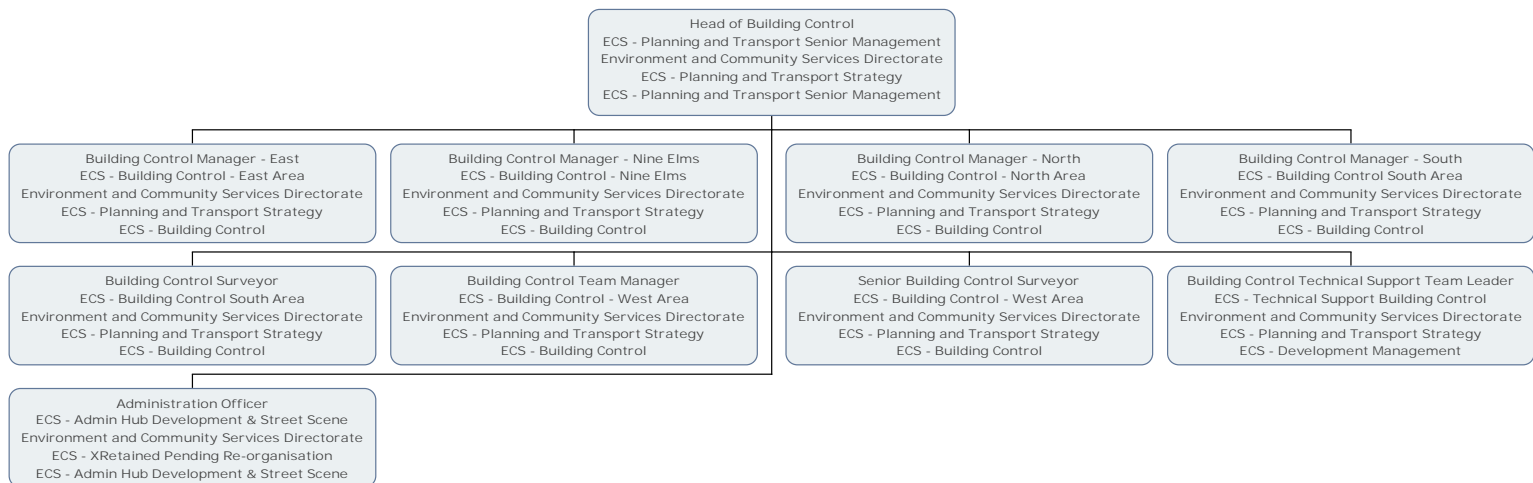
Transport Planner (Fixed Term)
ECS - Transport Strategy
Environment and Community Services Directorate
ECS - Planning and Transport Strategy
ECS - Spatial and Transport Planning

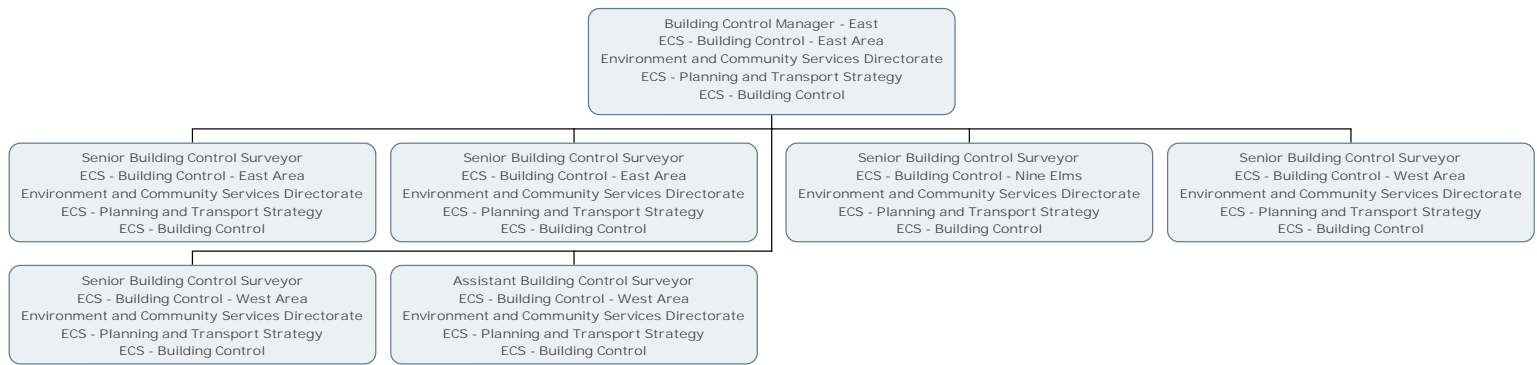
Principal Transport Planner
ECS - Transport Strategy
Environment and Community Services Directorate
ECS - Planning and Transport Strategy
ECS - Spatial and Transport Planning

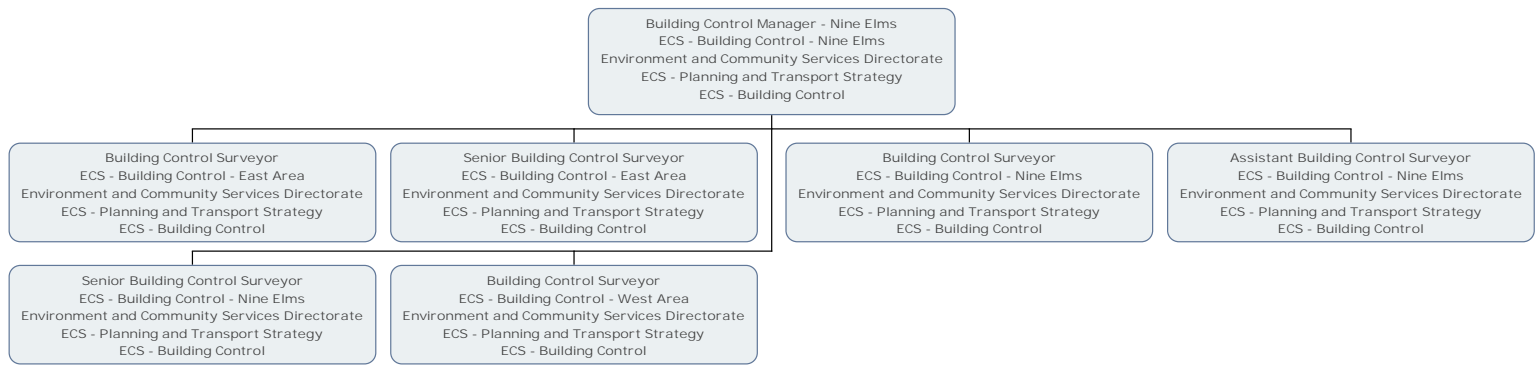


Senior Transport Planner (Fixed Term)
ECS - Transport Strategy
Environment and Community Services Directorate
ECS - Planning and Transport Strategy
ECS - Spatial and Transport Planning

Transport Planner
ECS - Transport Strategy
Environment and Community Services Directorate
ECS - Planning and Transport Strategy
ECS - Spatial and Transport Planning







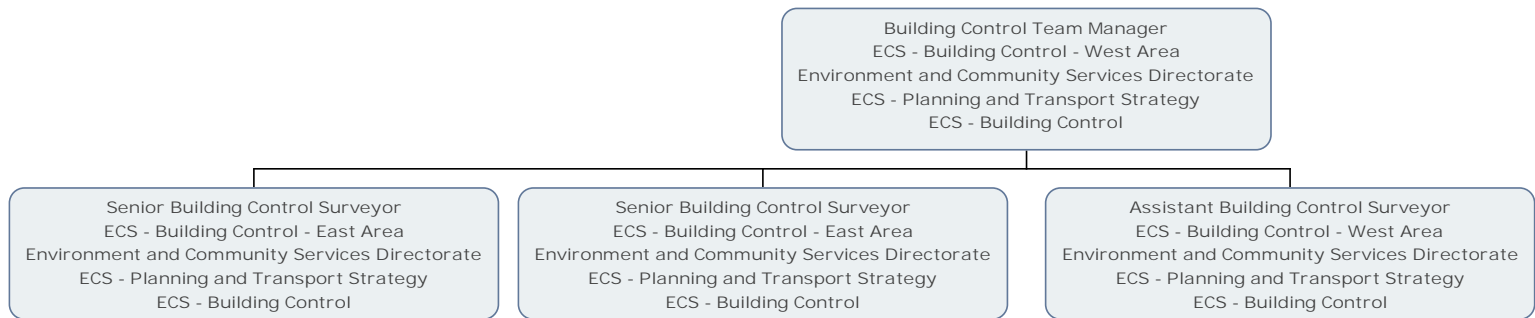
Building Control Manager - North
ECS - Building Control - North Area
Environment and Community Services Directorate
ECS - Planning and Transport Strategy
ECS - Building Control



Senior Building Control Surveyor
ECS - Building Control - North Area
Environment and Community Services Directorate
ECS - Planning and Transport Strategy
ECS - Building Control

Senior Building Control Surveyor
ECS - Building Control - North Area
Environment and Community Services Directorate
ECS - Planning and Transport Strategy
ECS - Building Control





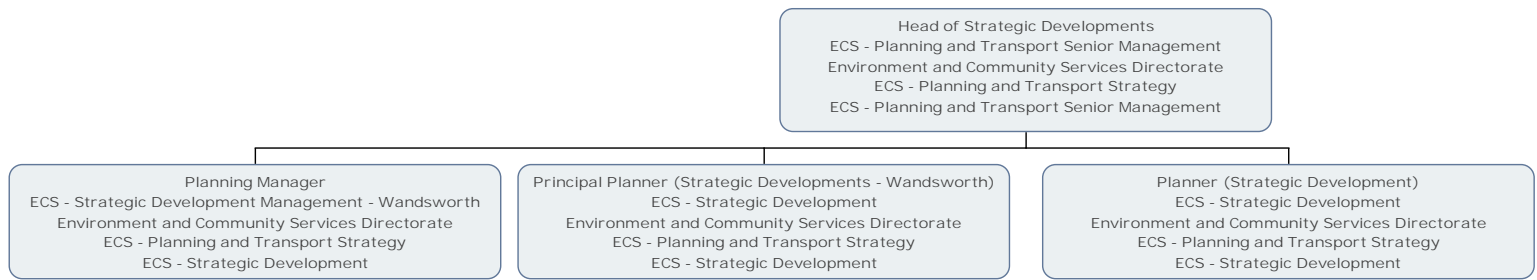
Building Control Technical Support Team Leader
ECS - Technical Support Building Control
Environment and Community Services Directorate
ECS - Planning and Transport Strategy
ECS - Development Management

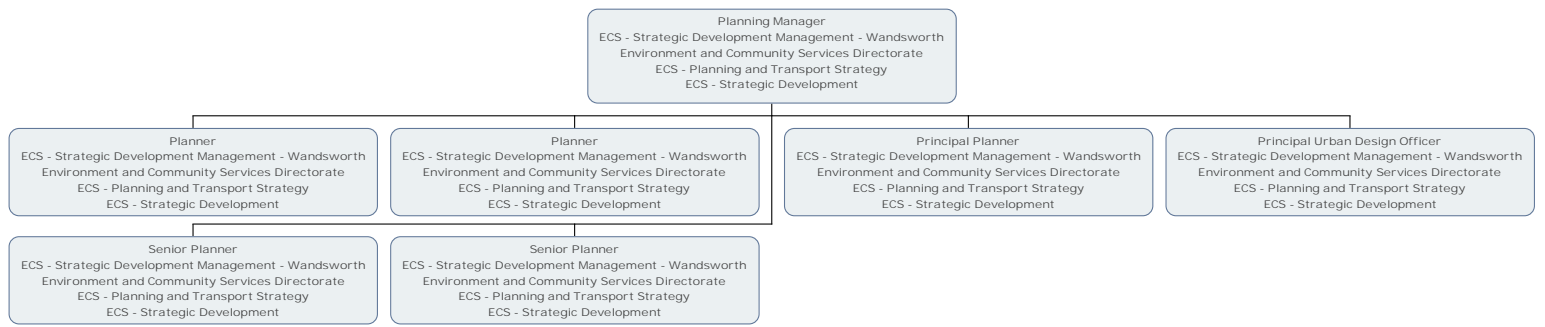
Building Control Technical Support Officer
ECS - Technical Support Building Control
Environment and Community Services Directorate
ECS - Planning and Transport Strategy
ECS - Development Management

Building Control Technical Support Officer
ECS - Technical Support Building Control
Environment and Community Services Directorate
ECS - Planning and Transport Strategy
ECS - Development Management

Building Control Technical Support Officer
ECS - Technical Support Building Control
Environment and Community Services Directorate
ECS - Planning and Transport Strategy
ECS - Development Management

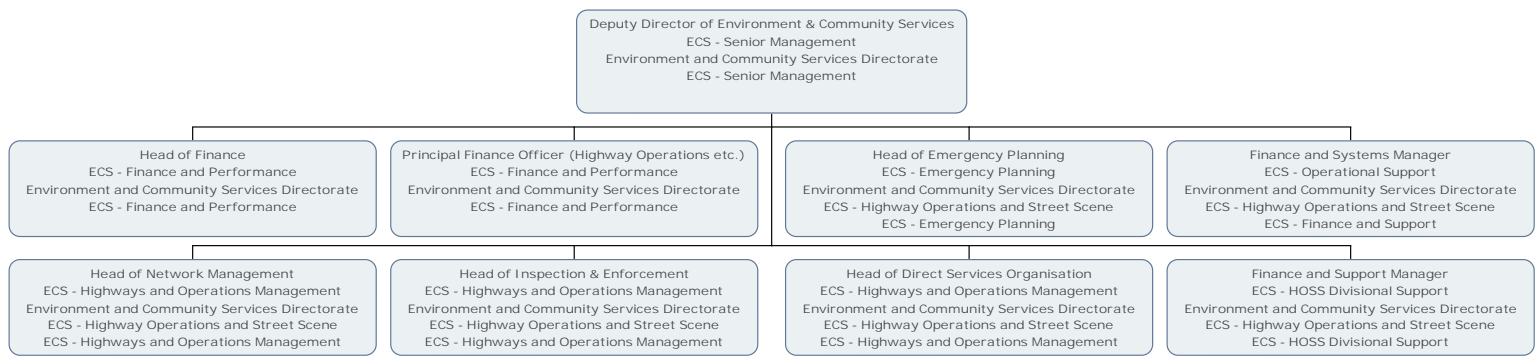
Building Control Technical Support Officer
ECS - Technical Support Building Control
Environment and Community Services Directorate
ECS - Planning and Transport Strategy
ECS - Development Management

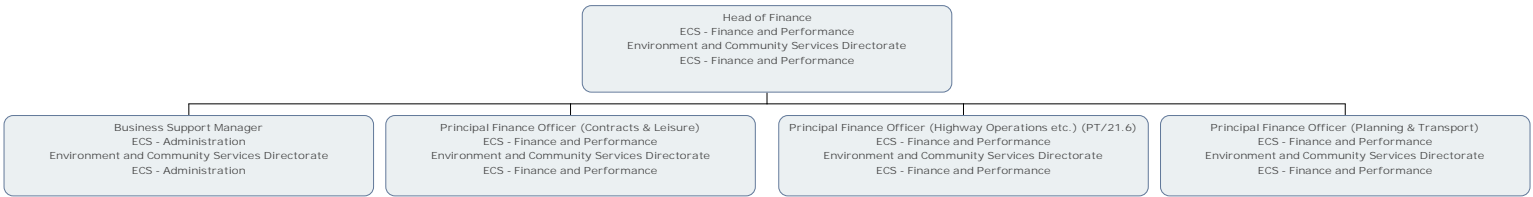


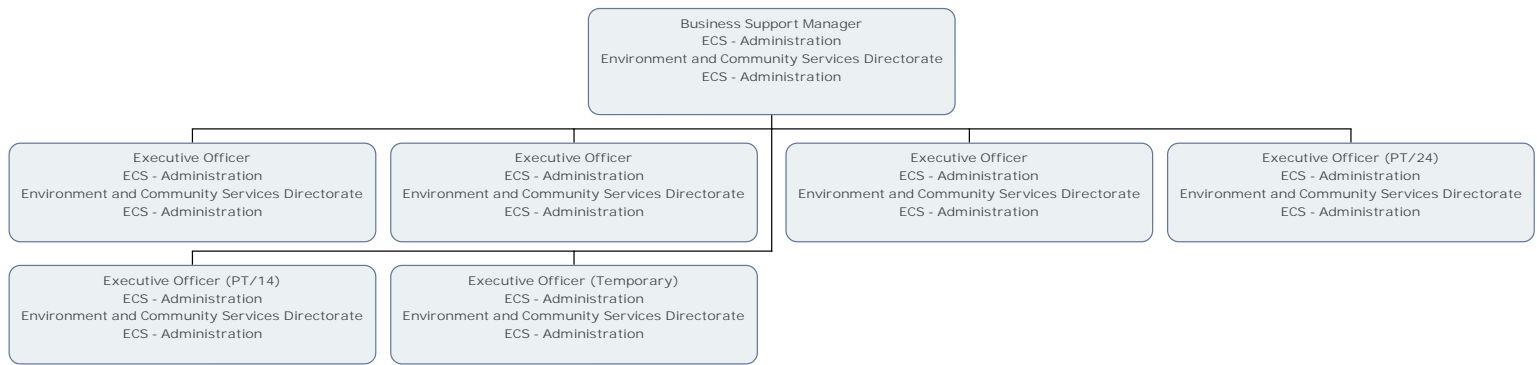


Assistant Director of Environment and Community Services (Waste)
ECS - Senior Management
Environment and Community Services Directorate
ECS - Senior Management

Head of Waste and Street Cleansing
ECS - Contracts and Leisure Senior Management
Environment and Community Services Directorate
ECS - Contracts and Leisure
ECS - Contracts and Leisure Senior Management







Principal Finance Officer (Contracts & Leisure)
ECS - Finance and Performance
Environment and Community Services Directorate
ECS - Finance and Performance

Senior Finance Officer
ECS - Finance and Performance
Environment and Community Services Directorate
ECS - Finance and Performance

Principal Finance Officer (Highway Operations etc.) (PT/21.6)
ECS - Finance and Performance
Environment and Community Services Directorate
ECS - Finance and Performance

Finance Officer
ECS - Finance and Performance
Environment and Community Services Directorate
ECS - Finance and Performance

Principal Finance Officer (Planning & Transport)
ECS - Finance and Performance
Environment and Community Services Directorate
ECS - Finance and Performance

Finance Officer
ECS - Finance and Performance
Environment and Community Services Directorate
ECS - Finance and Performance

Finance Officer
ECS - Finance and Performance
Environment and Community Services Directorate
ECS - Finance and Performance

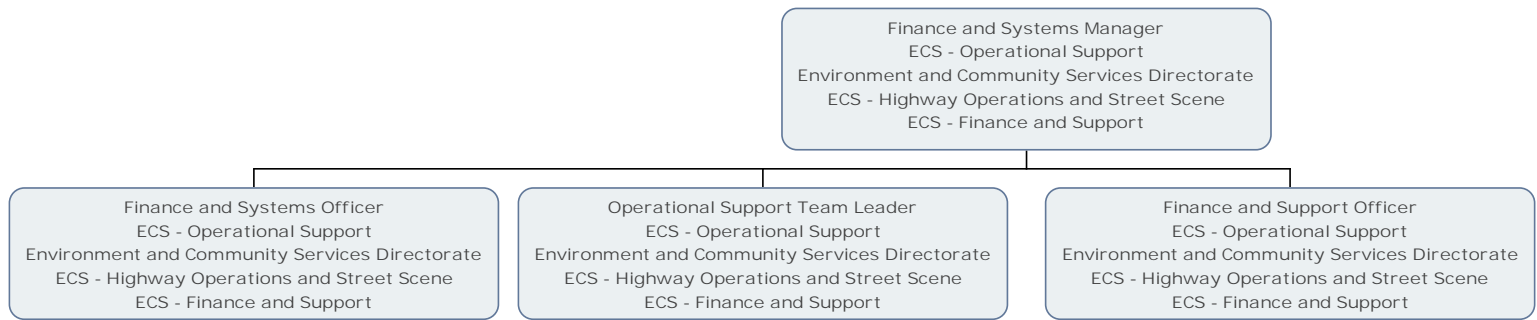
Way to Work Apprentice
ECS - Finance and Performance
Environment and Community Services Directorate
ECS - Finance and Performance

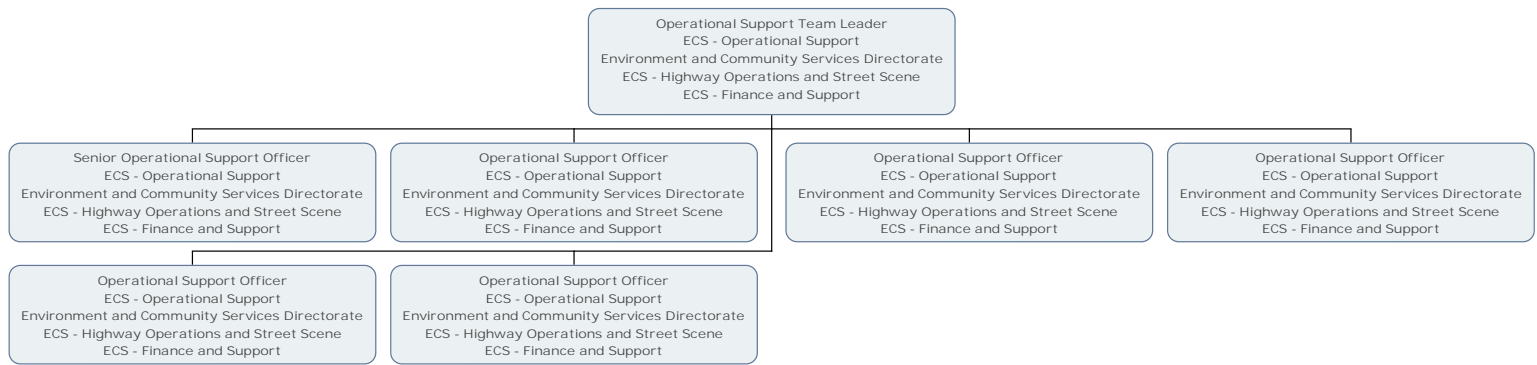
Head of Emergency Planning
ECS - Emergency Planning
Environment and Community Services Directorate
ECS - Highway Operations and Street Scene
ECS - Emergency Planning

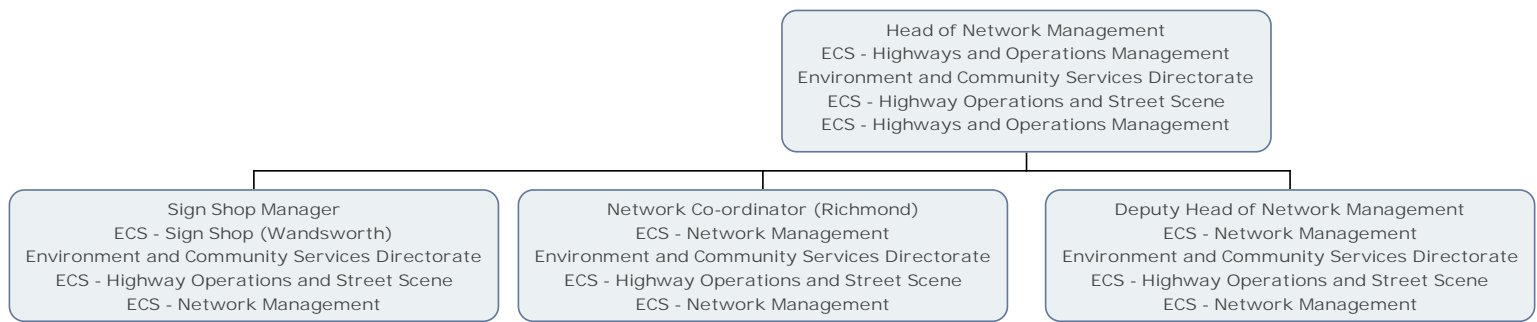


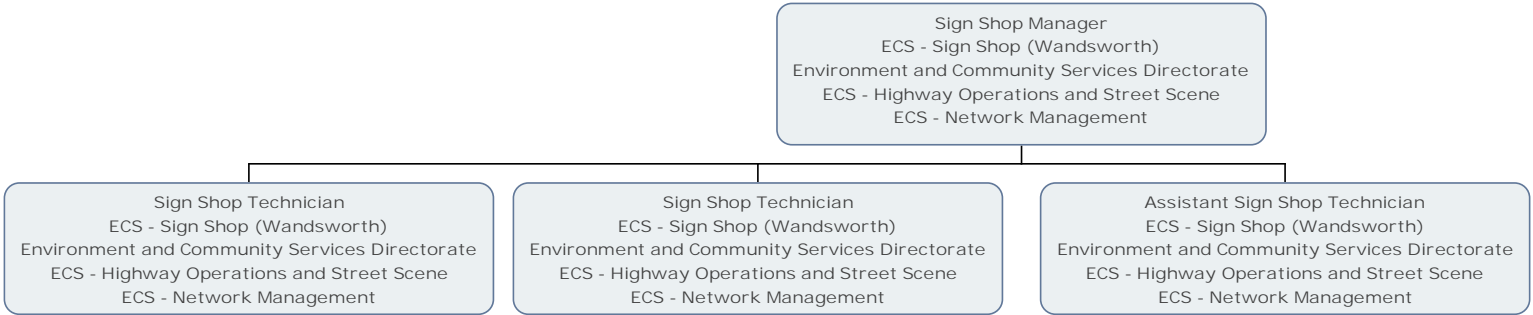
Senior Emergency Planning Assistant
ECS - Emergency Planning
Environment and Community Services Directorate
ECS - Highway Operations and Street Scene
ECS - Emergency Planning

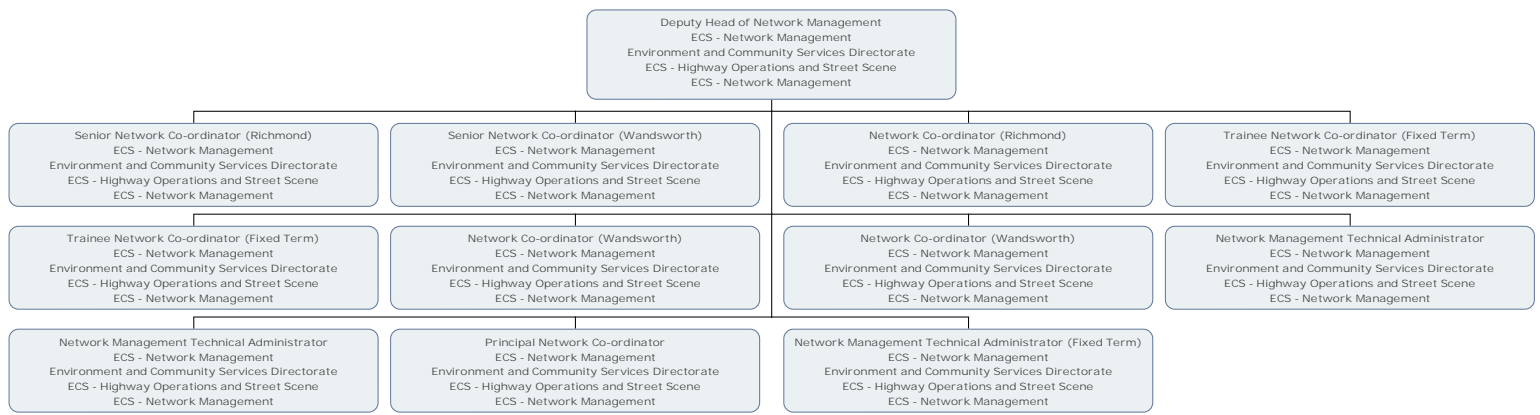
Emergency Planning Assistant
ECS - Emergency Planning
Environment and Community Services Directorate
ECS - Highway Operations and Street Scene
ECS - Emergency Planning





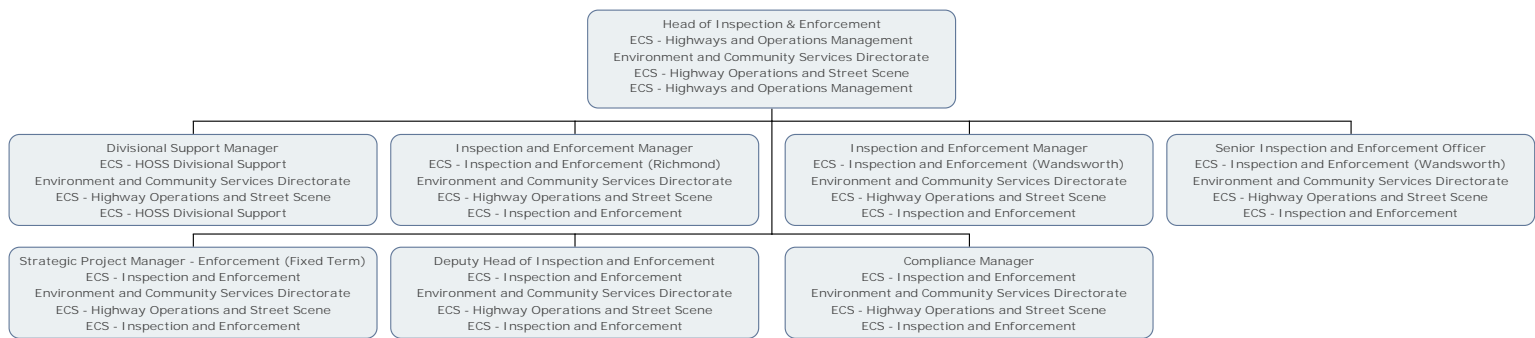






Principal Network Co-ordinator
ECS - Network Management
Environment and Community Services Directorate
ECS - Highway Operations and Street Scene
ECS - Network Management

Compliance Officer
ECS - Network Management
Environment and Community Services Directorate
ECS - Highway Operations and Street Scene
ECS - Network Management

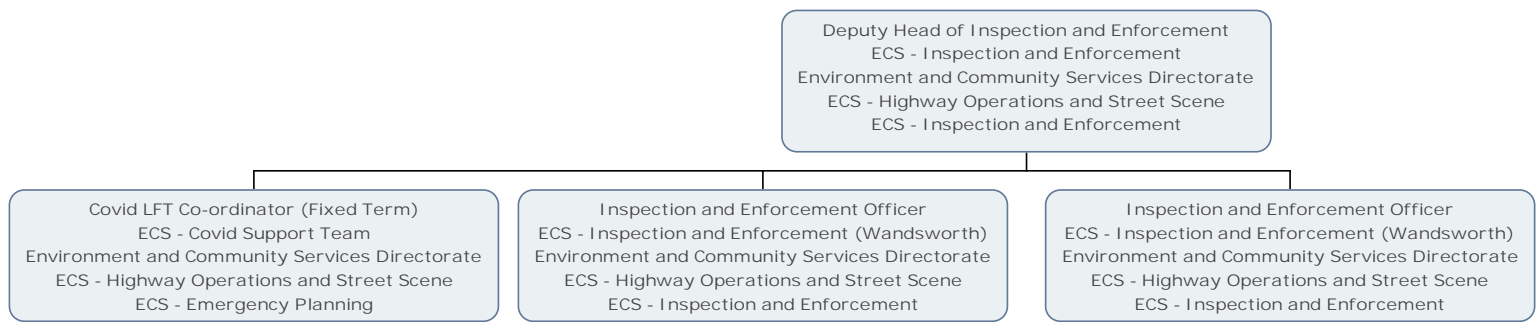


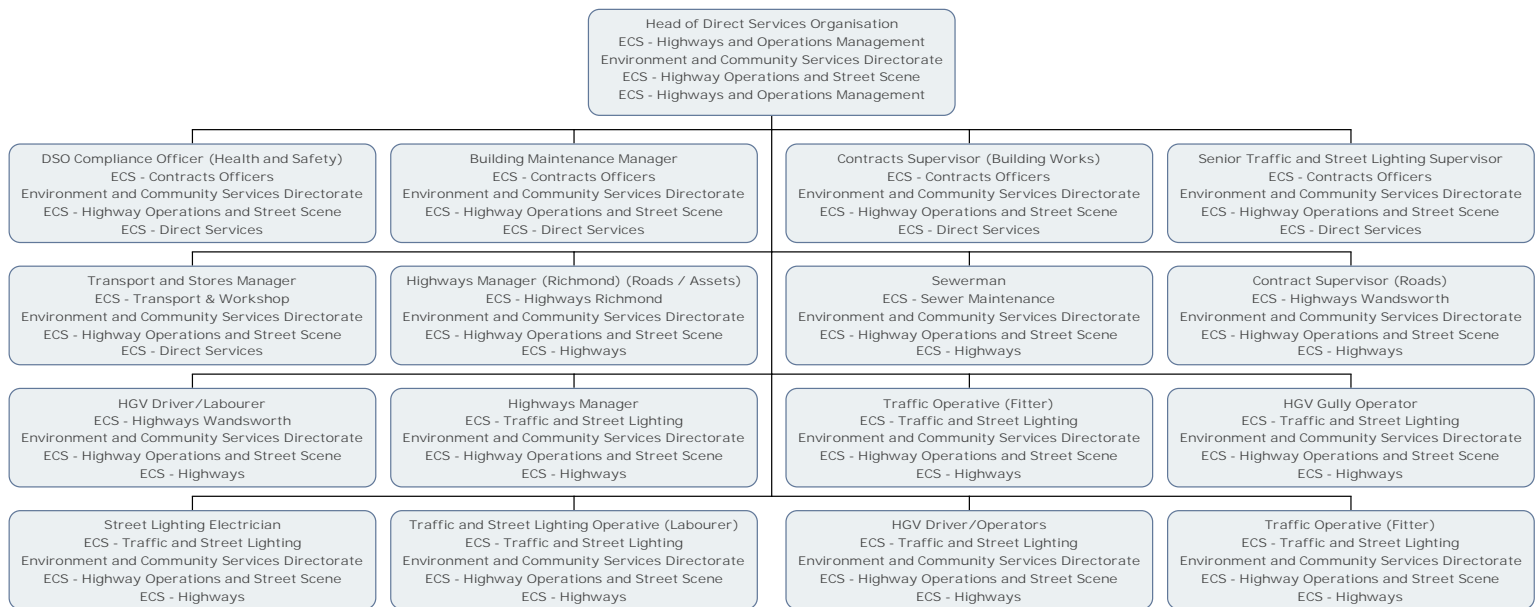
Divisional Support Manager
ECS - HOSS Divisional Support
Environment and Community Services Directorate
ECS - Highway Operations and Street Scene
ECS - HOSS Divisional Support

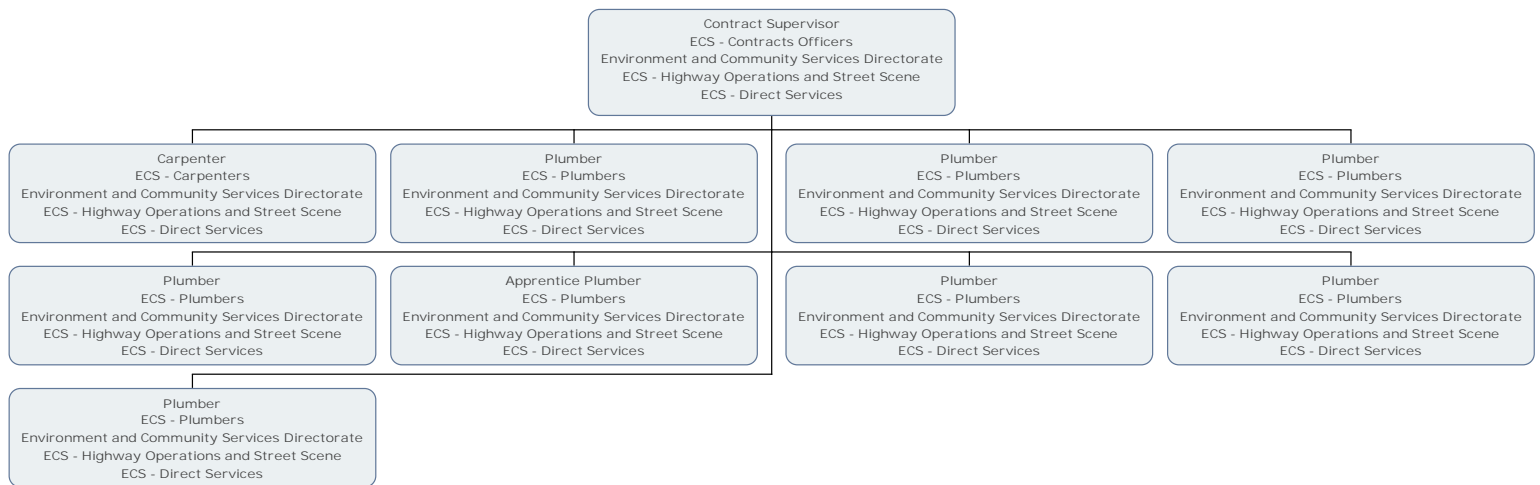
Senior Divisional Support Officer
ECS - HOSS Divisional Support
Environment and Community Services Directorate
ECS - Highway Operations and Street Scene
ECS - HOSS Divisional Support

Inspection and Enforcement Performance Officer
ECS - Inspection and Enforcement (Wandsworth)
Environment and Community Services Directorate
ECS - Highway Operations and Street Scene
ECS - Inspection and Enforcement

Inspection and Enforcement Support Officer
ECS - HOSS Divisional Support
Environment and Community Services Directorate
ECS - Highway Operations and Street Scene
ECS - HOSS Divisional Support



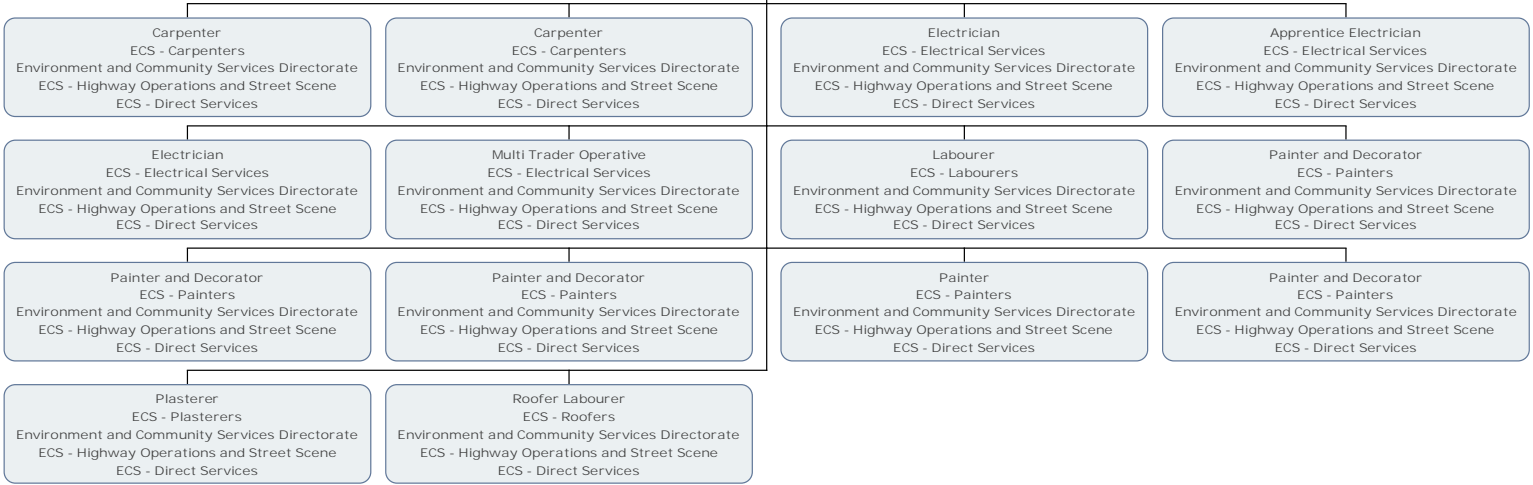




Contracts Officer
ECS - Contracts Officers
Environment and Community Services Directorate
ECS - Highway Operations and Street Scene
ECS - Direct Services

Electrician
ECS - Electrical Services
Environment and Community Services Directorate
ECS - Highway Operations and Street Scene
ECS - Direct Services

Contracts Supervisor (Building Works)
ECS - Contracts Officers
Environment and Community Services Directorate
ECS - Highway Operations and Street Scene
ECS - Direct Services



Contracts Supervisor (Building Works)
ECS - Contracts Officers
Environment and Community Services Directorate
ECS - Highway Operations and Street Scene
ECS - Direct Services

Bricklayer
ECS - Brick Layers
Environment and Community Services Directorate
ECS - Highway Operations and Street Scene
ECS - Direct Services

Carpenter
ECS - Carpenters
Environment and Community Services Directorate
ECS - Highway Operations and Street Scene
ECS - Direct Services

Carpenter
ECS - Carpenters
Environment and Community Services Directorate
ECS - Highway Operations and Street Scene
ECS - Direct Services

Carpenter
ECS - Carpenters
Environment and Community Services Directorate
ECS - Highway Operations and Street Scene
ECS - Direct Services

Carpenter
ECS - Carpenters
Environment and Community Services Directorate
ECS - Highway Operations and Street Scene
ECS - Direct Services

Carpenter
ECS - Carpenters
Environment and Community Services Directorate
ECS - Highway Operations and Street Scene
ECS - Direct Services

Carpenter
ECS - Carpenters
Environment and Community Services Directorate
ECS - Highway Operations and Street Scene
ECS - Direct Services

Carpenter
ECS - Carpenters
Environment and Community Services Directorate
ECS - Highway Operations and Street Scene
ECS - Direct Services

Carpenter
ECS - Carpenters
Environment and Community Services Directorate
ECS - Highway Operations and Street Scene
ECS - Direct Services

Driver
ECS - Labourers
Environment and Community Services Directorate
ECS - Highway Operations and Street Scene
ECS - Direct Services

Multi Trade Operative
ECS - Multi Traders
Environment and Community Services Directorate
ECS - Highway Operations and Street Scene
ECS - Direct Services

Multi Trade Operative
ECS - Multi Traders
Environment and Community Services Directorate
ECS - Highway Operations and Street Scene
ECS - Direct Services

Plumber
ECS - Plumbers
Environment and Community Services Directorate
ECS - Highway Operations and Street Scene
ECS - Direct Services

Roofer
ECS - Roofers
Environment and Community Services Directorate
ECS - Highway Operations and Street Scene
ECS - Direct Services

Senior Projects Officer (Contracts)
ECS - Contracts Officers
Environment and Community Services Directorate
ECS - Highway Operations and Street Scene
ECS - Direct Services



Painter and Decorator
ECS - Labourers
Environment and Community Services Directorate
ECS - Highway Operations and Street Scene
ECS - Direct Services

Painter and Decorator
ECS - Painters
Environment and Community Services Directorate
ECS - Highway Operations and Street Scene
ECS - Direct Services

Contracts Officer
ECS - Contracts Officers
Environment and Community Services Directorate
ECS - Highway Operations and Street Scene
ECS - Direct Services

Painter and Decorator
ECS - Painters
Environment and Community Services Directorate
ECS - Highway Operations and Street Scene
ECS - Direct Services

Contracts Supervisor (Building Works)
ECS - Contracts Officers
Environment and Community Services Directorate
ECS - Highway Operations and Street Scene
ECS - Direct Services

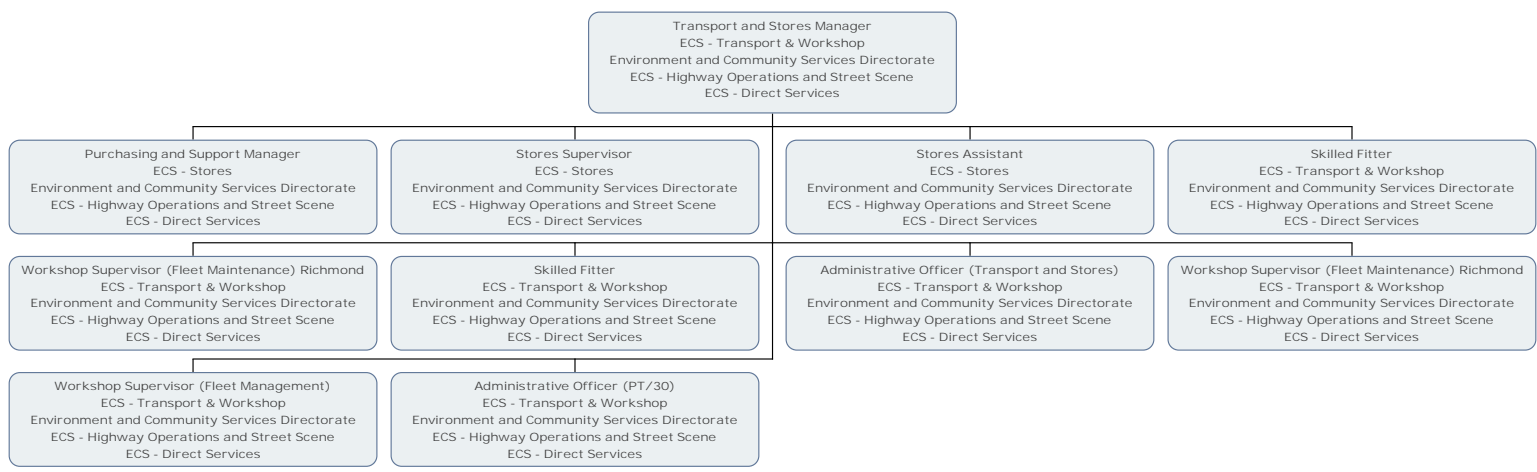
Contracts Supervisor (Building Works)
ECS - Contracts Officers
Environment and Community Services Directorate
ECS - Highway Operations and Street Scene
ECS - Direct Services

Senior Traffic and Street Lighting Supervisor
ECS - Contracts Officers
Environment and Community Services Directorate
ECS - Highway Operations and Street Scene
ECS - Direct Services



Traffic and Street Lighting Operative (Labourer)
ECS - Traffic and Street Lighting
Environment and Community Services Directorate
ECS - Highway Operations and Street Scene
ECS - Highways

Trainee Supervisor Traffic and Street Lighting
ECS - Sign Shop (Wandsworth)
Environment and Community Services Directorate
ECS - Highway Operations and Street Scene
ECS - Network Management

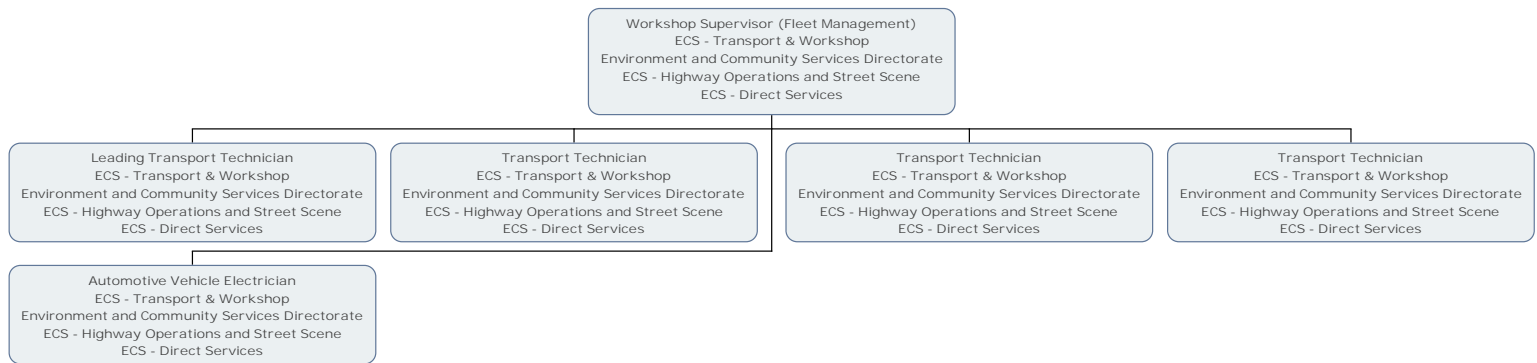


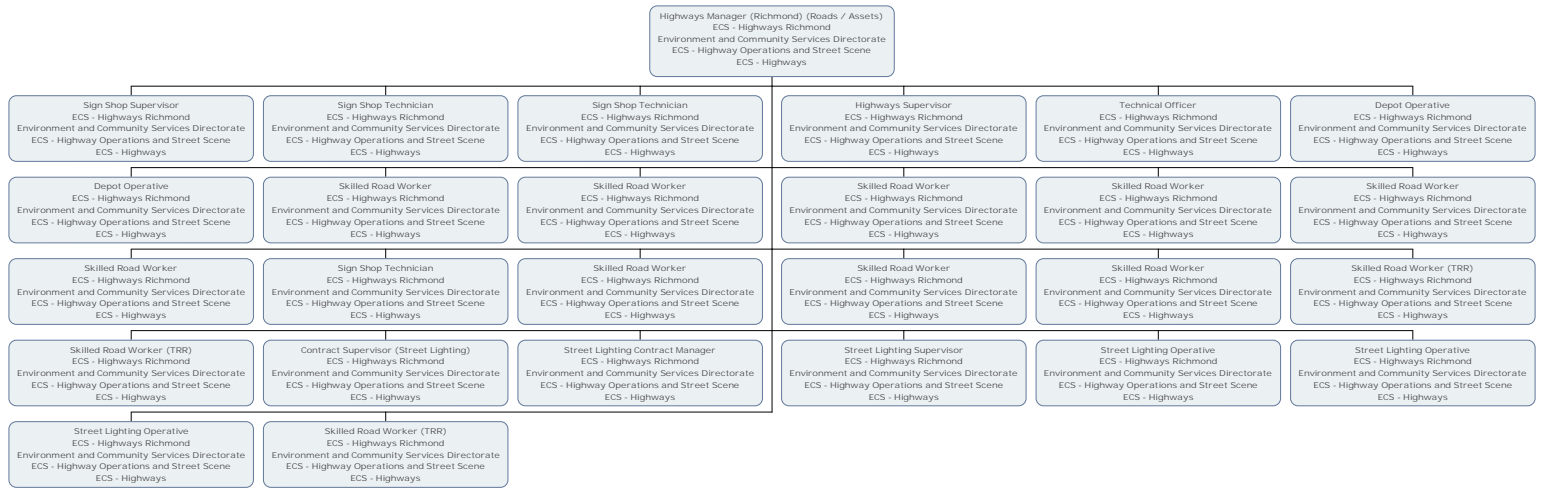
Stores Supervisor
ECS - Stores
Environment and Community Services Directorate
ECS - Highway Operations and Street Scene
ECS - Direct Services

Stores Assistant (PT/7.2)
ECS - Stores
Environment and Community Services Directorate
ECS - Highway Operations and Street Scene
ECS - Direct Services

Workshop Supervisor (Fleet Maintenance) Richmond
ECS - Transport & Workshop
Environment and Community Services Directorate
ECS - Highway Operations and Street Scene
ECS - Direct Services

Driver
ECS - Transport & Workshop
Environment and Community Services Directorate
ECS - Highway Operations and Street Scene
ECS - Direct Services





Highways Manager
ECS - Traffic and Street Lighting
Environment and Community Services Directorate
ECS - Highway Operations and Street Scene
ECS - Highways

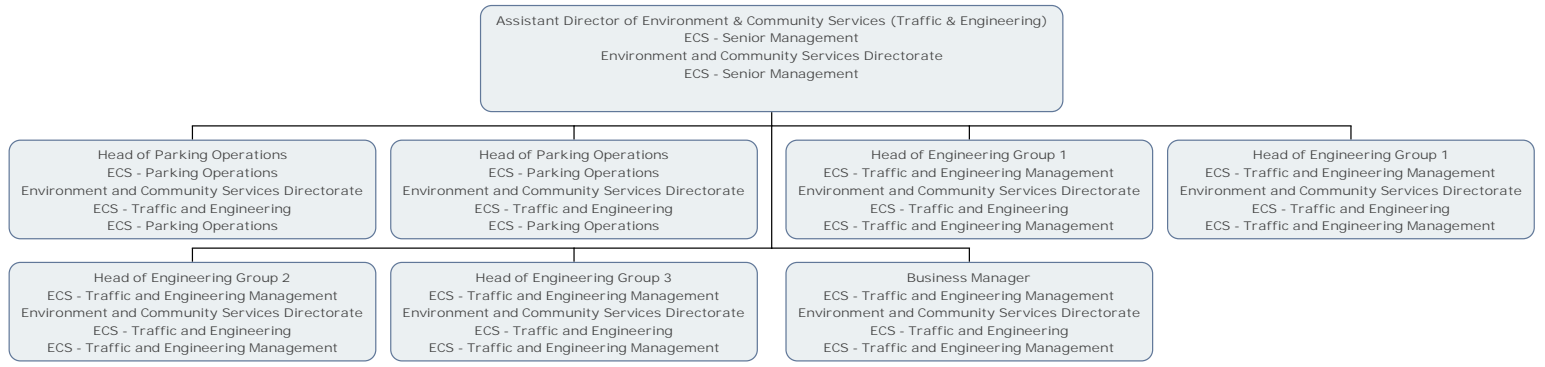
Senior Highways Supervisor
ECS - Highways Wandsworth
Environment and Community Services Directorate
ECS - Highway Operations and Street Scene
ECS - Highways

Labourer
ECS - Highways Wandsworth
Environment and Community Services Directorate
ECS - Highway Operations and Street Scene
ECS - Highways

Contract Supervisor (Roads)
ECS - Highways Wandsworth
Environment and Community Services Directorate
ECS - Highway Operations and Street Scene
ECS - Highways

Contract Supervisor (Assets)
ECS - Traffic and Street Lighting
Environment and Community Services Directorate
ECS - Highway Operations and Street Scene
ECS - Highways

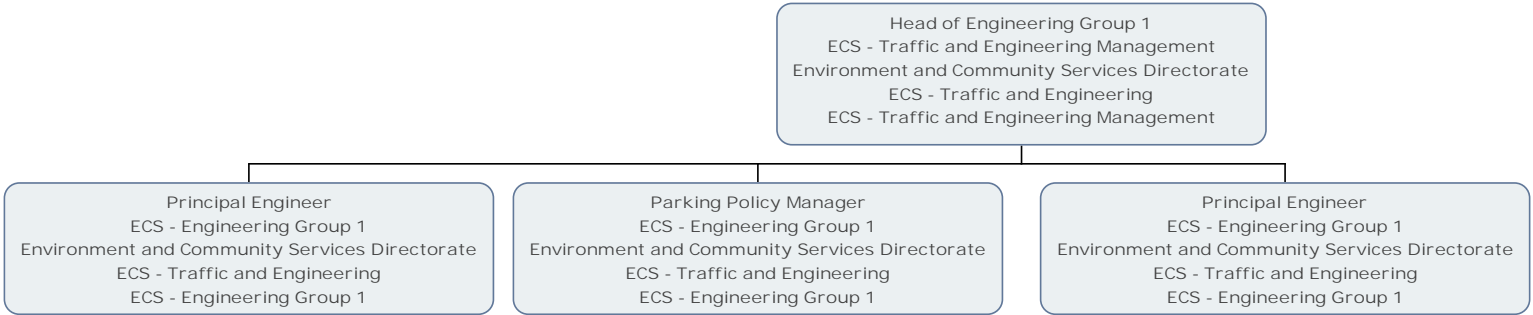




Head of Parking Operations
ECS - Parking Operations
Environment and Community Services Directorate
ECS - Traffic and Engineering
ECS - Parking Operations

Assistant Head of Parking Operations
ECS - Parking Operations
Environment and Community Services Directorate
ECS - Traffic and Engineering
ECS - Parking Operations





Principal Engineer
ECS - Engineering Group 1
Environment and Community Services Directorate
ECS - Traffic and Engineering
ECS - Engineering Group 1

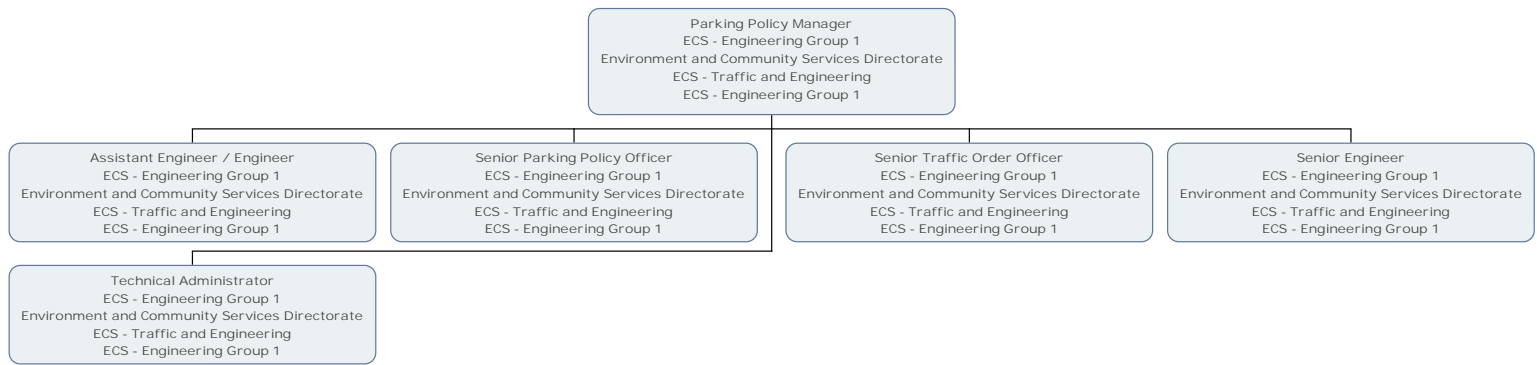


Senior Engineer
ECS - Engineering Group 1
Environment and Community Services Directorate
ECS - Traffic and Engineering
ECS - Engineering Group 1

Senior Engineer
ECS - Engineering Group 1
Environment and Community Services Directorate
ECS - Traffic and Engineering
ECS - Engineering Group 1

Senior Engineer
ECS - Engineering Group 1
Environment and Community Services Directorate
ECS - Traffic and Engineering
ECS - Engineering Group 1

Engineer
ECS - Engineering Group 1
Environment and Community Services Directorate
ECS - Traffic and Engineering
ECS - Engineering Group 1



Senior Engineer
ECS - Engineering Group 1
Environment and Community Services Directorate
ECS - Traffic and Engineering
ECS - Engineering Group 1



Assistant Engineer / Engineer
ECS - Engineering Group 1
Environment and Community Services Directorate
ECS - Traffic and Engineering
ECS - Engineering Group 1

Parking Policy Officer
ECS - Engineering Group 1
Environment and Community Services Directorate
ECS - Traffic and Engineering
ECS - Engineering Group 1

Principal Engineer
ECS - Engineering Group 1
Environment and Community Services Directorate
ECS - Traffic and Engineering
ECS - Engineering Group 1



Senior Engineer
ECS - Engineering Group 1
Environment and Community Services Directorate
ECS - Traffic and Engineering
ECS - Engineering Group 1

Senior Engineer
ECS - Engineering Group 1
Environment and Community Services Directorate
ECS - Traffic and Engineering
ECS - Engineering Group 1

Senior Engineer
ECS - Engineering Group 1
Environment and Community Services Directorate
ECS - Traffic and Engineering
ECS - Engineering Group 1

Engineer
ECS - Engineering Group 1
Environment and Community Services Directorate
ECS - Traffic and Engineering
ECS - Engineering Group 1

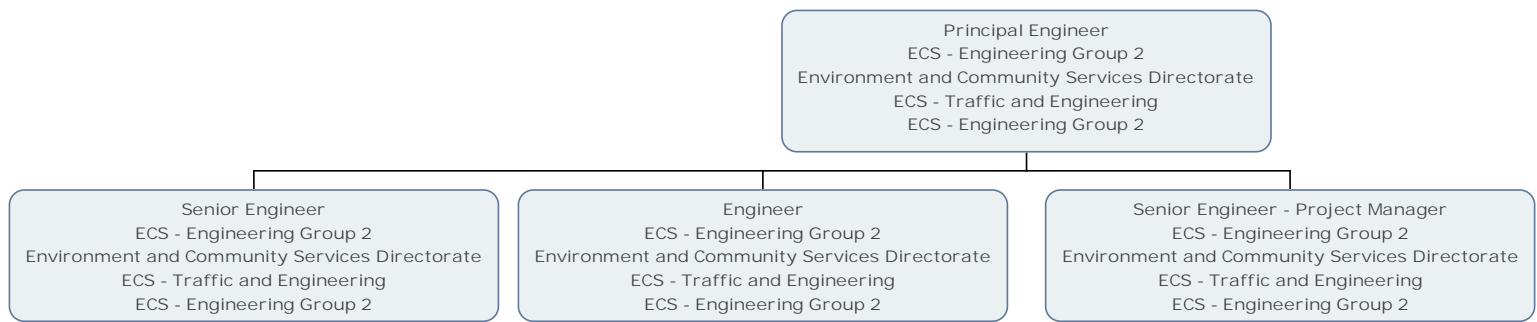
Head of Engineering Group 2
ECS - Traffic and Engineering Management
Environment and Community Services Directorate
ECS - Traffic and Engineering
ECS - Traffic and Engineering Management

Principal Engineer
ECS - Engineering Group 2
Environment and Community Services Directorate
ECS - Traffic and Engineering
ECS - Engineering Group 2

Principal Engineer
ECS - Engineering Group 2
Environment and Community Services Directorate
ECS - Traffic and Engineering
ECS - Engineering Group 2

Principal Engineer
ECS - Engineering Group 2
Environment and Community Services Directorate
ECS - Traffic and Engineering
ECS - Engineering Group 2

Principal Engineer
ECS - Engineering Group 2
Environment and Community Services Directorate
ECS - Traffic and Engineering
ECS - Engineering Group 2

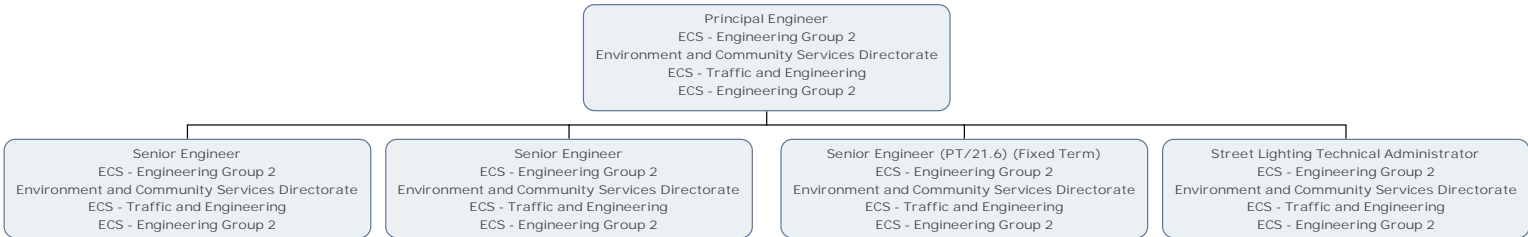


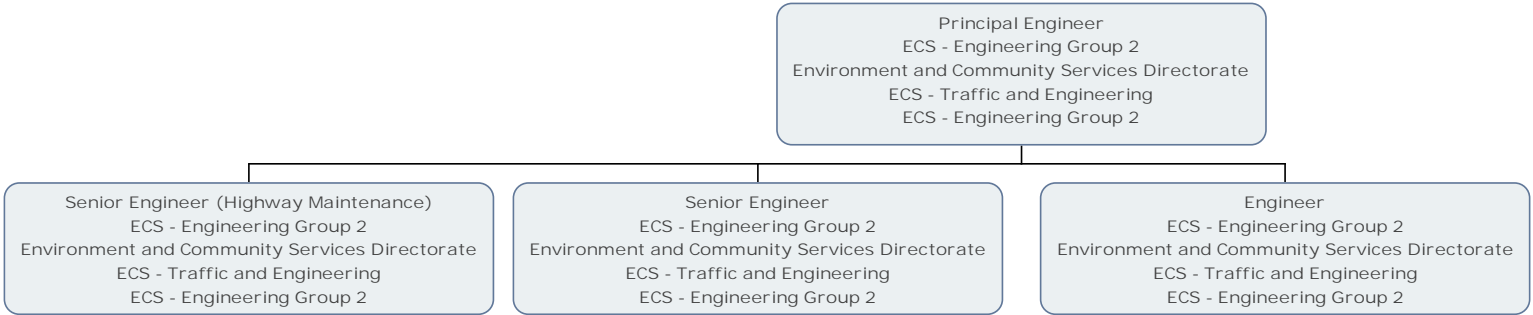
Principal Engineer
ECS - Engineering Group 2
Environment and Community Services Directorate
ECS - Traffic and Engineering
ECS - Engineering Group 2



Senior Engineer (Bridges and Structures)
ECS - Engineering Group 2
Environment and Community Services Directorate
ECS - Traffic and Engineering
ECS - Engineering Group 2

Assistant Engineer / Engineer
ECS - Engineering Group 2
Environment and Community Services Directorate
ECS - Traffic and Engineering
ECS - Engineering Group 2





Head of Engineering Group 3
ECS - Traffic and Engineering Management
Environment and Community Services Directorate
ECS - Traffic and Engineering
ECS - Traffic and Engineering Management

Principal Engineer
ECS - Engineering Group 3
Environment and Community Services Directorate
ECS - Traffic and Engineering
ECS - Engineering Group 3

Principal Engineer
ECS - Engineering Group 3
Environment and Community Services Directorate
ECS - Traffic and Engineering
ECS - Engineering Group 3

Road Safety Manager
ECS - Engineering Group 3
Environment and Community Services Directorate
ECS - Traffic and Engineering
ECS - Engineering Group 3

Richmond Programme Manager - Innovative Coastal Flood Resilience (Fixed Term)
ECS - Engineering Group 3
Environment and Community Services Directorate
ECS - Traffic and Engineering
ECS - Engineering Group 3

Principal Engineer
ECS - Engineering Group 3
Environment and Community Services Directorate
ECS - Traffic and Engineering
ECS - Engineering Group 3

Senior Engineer
ECS - Engineering Group 3
Environment and Community Services Directorate
ECS - Traffic and Engineering
ECS - Engineering Group 3

Senior Engineer
ECS - Engineering Group 3
Environment and Community Services Directorate
ECS - Traffic and Engineering
ECS - Engineering Group 3

Engineer
ECS - Engineering Group 3
Environment and Community Services Directorate
ECS - Traffic and Engineering
ECS - Engineering Group 3

Senior Engineer
ECS - Engineering Group 3
Environment and Community Services Directorate
ECS - Traffic and Engineering
ECS - Engineering Group 3

Senior Engineer
ECS - Engineering Group 3
Environment and Community Services Directorate
ECS - Traffic and Engineering
ECS - Engineering Group 3



Engineer
ECS - Engineering Group 3
Environment and Community Services Directorate
ECS - Traffic and Engineering
ECS - Engineering Group 3

Capital Works Engineer
ECS - Engineering Group 3
Environment and Community Services Directorate
ECS - Traffic and Engineering
ECS - Engineering Group 3

Road Safety Manager
ECS - Engineering Group 3
Environment and Community Services Directorate
ECS - Traffic and Engineering
ECS - Engineering Group 3

Assistant Engineer
ECS - Engineering Group 3
Environment and Community Services Directorate
ECS - Traffic and Engineering
ECS - Engineering Group 3

Senior Engineer
ECS - Engineering Group 3
Environment and Community Services Directorate
ECS - Traffic and Engineering
ECS - Engineering Group 3

Senior Road Safety Officer
ECS - Engineering Group 3
Environment and Community Services Directorate
ECS - Traffic and Engineering
ECS - Engineering Group 3

Road Safety Officer
ECS - Engineering Group 3
Environment and Community Services Directorate
ECS - Traffic and Engineering
ECS - Engineering Group 3

School Crossing Patrols
ECS - School Crossing Patrol (Rich)
Environment and Community Services Directorate
ECS - Traffic and Engineering
ECS - School Crossing Patrol (Rich)

School Crossing Patrols
ECS - School Crossing Patrol (Rich)
Environment and Community Services Directorate
ECS - Traffic and Engineering
ECS - School Crossing Patrol (Rich)

School Crossing Patrols
ECS - School Crossing Patrol (Rich)
Environment and Community Services Directorate
ECS - Traffic and Engineering
ECS - School Crossing Patrol (Rich)

School Crossing Patrols
ECS - School Crossing Patrol (Rich)
Environment and Community Services Directorate
ECS - Traffic and Engineering
ECS - School Crossing Patrol (Rich)

School Crossing Patrols
ECS - School Crossing Patrol (Rich)
Environment and Community Services Directorate
ECS - Traffic and Engineering
ECS - School Crossing Patrol (Rich)

School Crossing Patrols
ECS - School Crossing Patrol (Rich)
Environment and Community Services Directorate
ECS - Traffic and Engineering
ECS - School Crossing Patrol (Rich)

School Crossing Patrol
ECS - School Crossing Patrol (Rich)
Environment and Community Services Directorate
ECS - Traffic and Engineering
ECS - School Crossing Patrol (Rich)

School Crossing Patroller
ECS - School Crossing Patrol (Wand)
Environment and Community Services Directorate
ECS - Traffic and Engineering
ECS - School Crossing Patrol (Wand)

