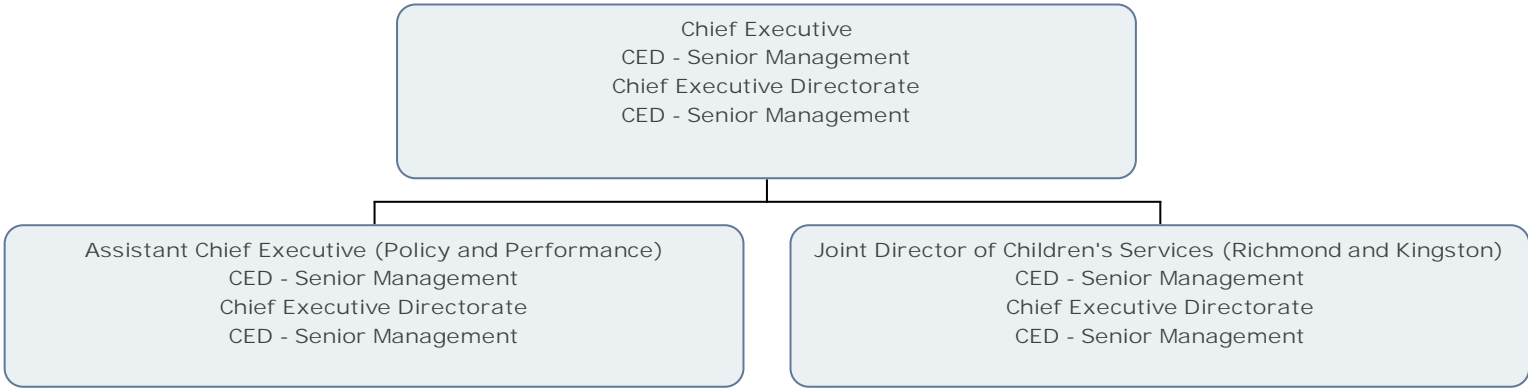
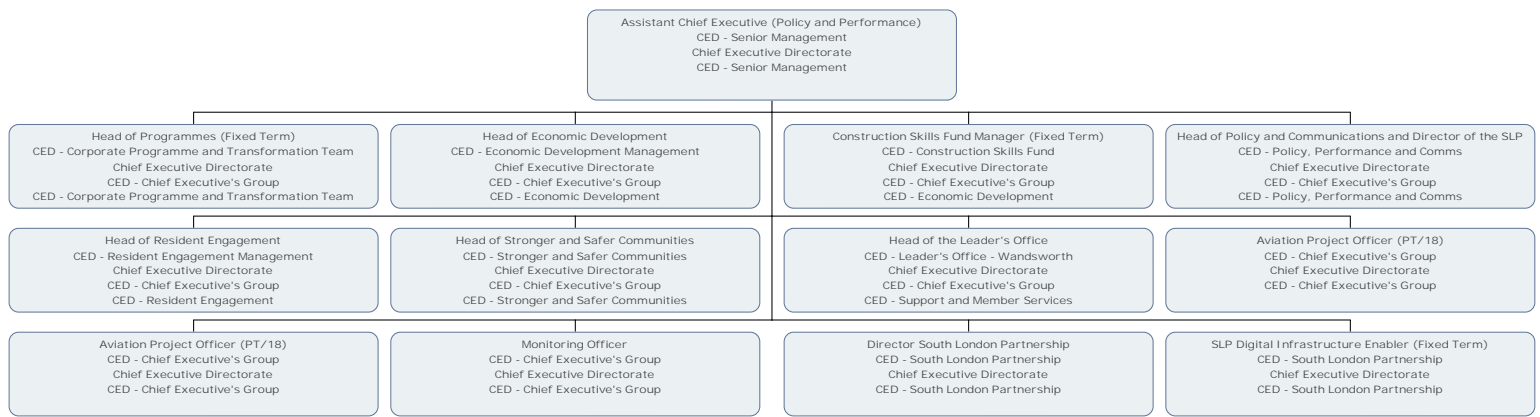
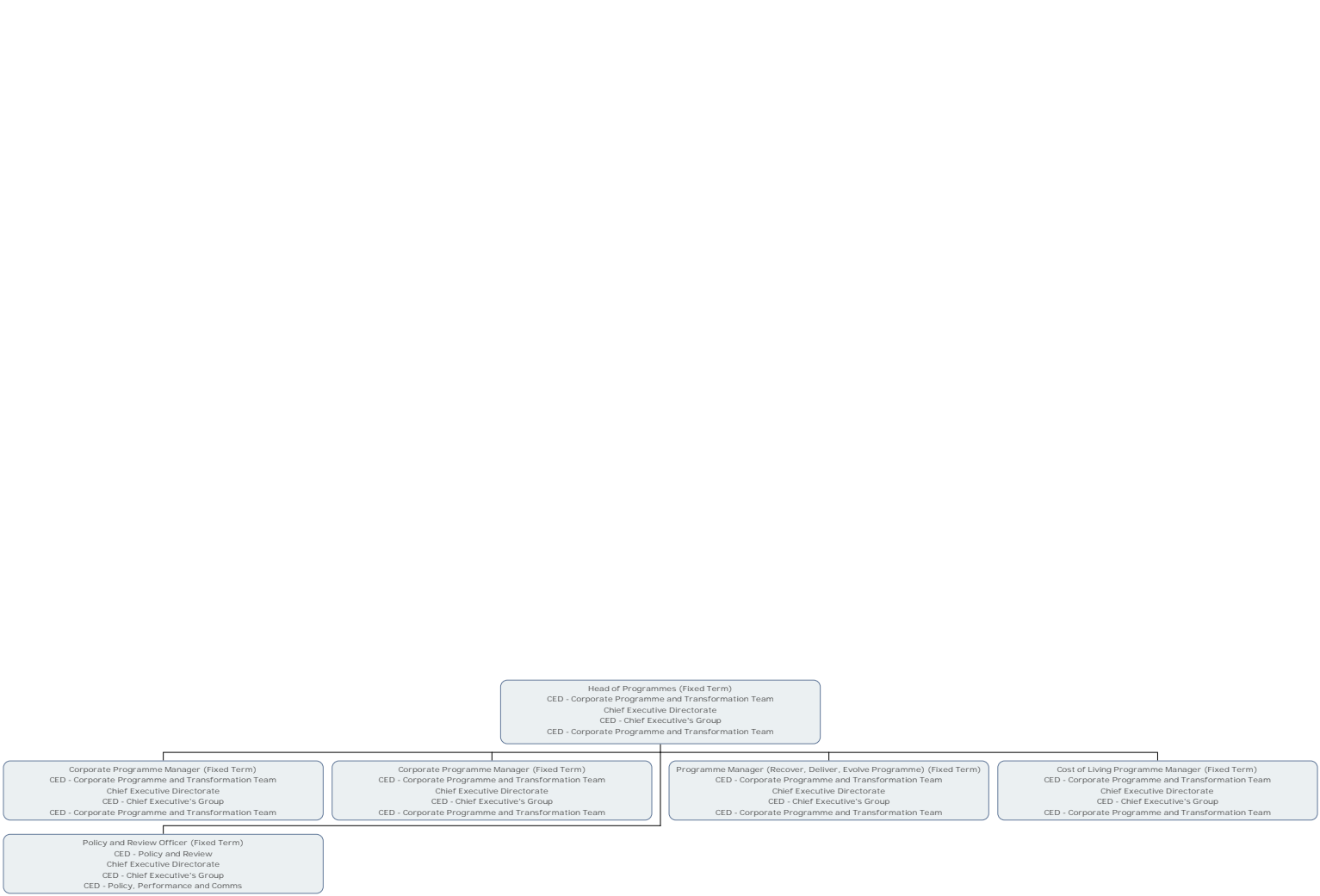


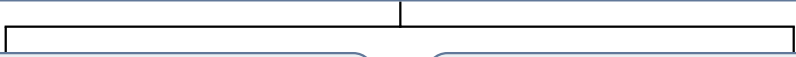
**CED**







Programme Manager (Recover, Deliver, Evolve Programme) (Fixed Term)  
CED - Corporate Programme and Transformation Team  
Chief Executive Directorate  
CED - Chief Executive's Group  
CED - Corporate Programme and Transformation Team

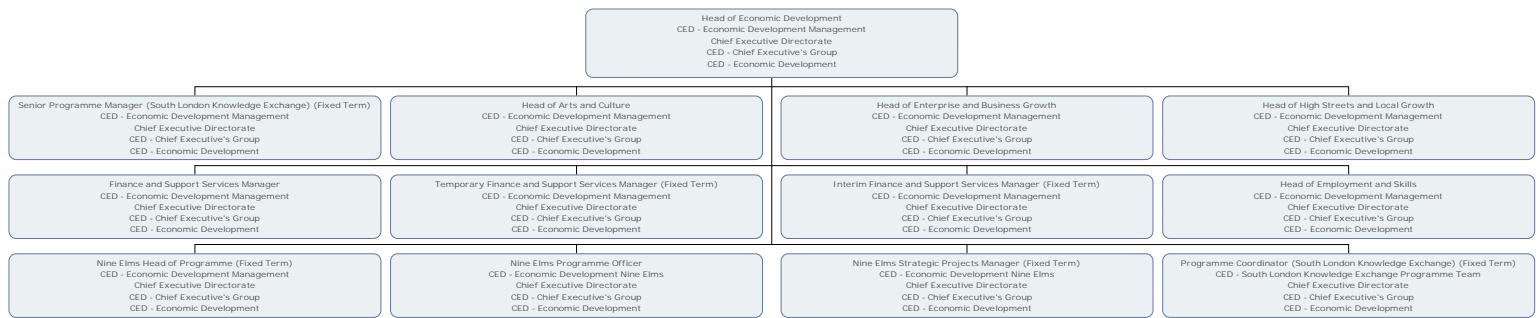


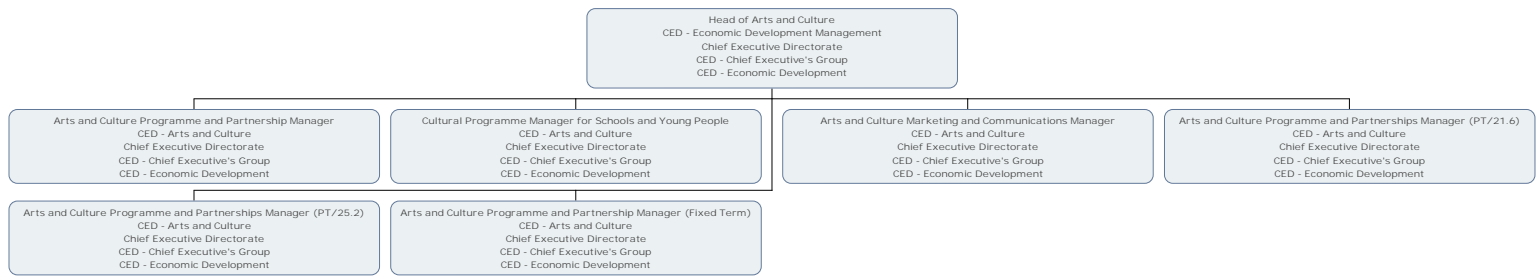
Project Officer (Fixed Term)  
CED - Corporate Programme and Transformation Team  
Chief Executive Directorate  
CED - Chief Executive's Group  
CED - Corporate Programme and Transformation Team

Project Officer (Fixed Term)  
CED - Corporate Programme and Transformation Team  
Chief Executive Directorate  
CED - Chief Executive's Group  
CED - Corporate Programme and Transformation Team

Cost of Living Programme Manager (Fixed Term)  
CED - Corporate Programme and Transformation Team  
Chief Executive Directorate  
CED - Chief Executive's Group  
CED - Corporate Programme and Transformation Team

Project Officer (Graduate Scheme)  
CED - Graduates  
Chief Executive Directorate  
CED - Chief Executive's Group  
CED - Support and Member Services







Arts and Culture Programme and Partnership Manager  
CED - Arts and Culture  
Chief Executive Directorate  
CED - Chief Executive's Group  
CED - Economic Development

Arts and Culture Marketing and Comms Assistant (Fixed Term)  
CED - Employment Delivery  
Chief Executive Directorate  
CED - Chief Executive's Group  
CED - Economic Development

Cultural Programme Manager for Schools and Young People  
CED - Arts and Culture  
Chief Executive Directorate  
CED - Chief Executive's Group  
CED - Economic Development

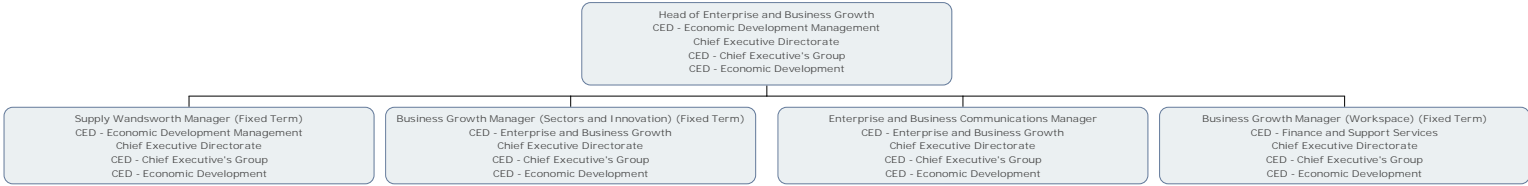
Arts and Culture Assistant (Fixed Term)  
CED - Employment Delivery  
Chief Executive Directorate  
CED - Chief Executive's Group  
CED - Economic Development

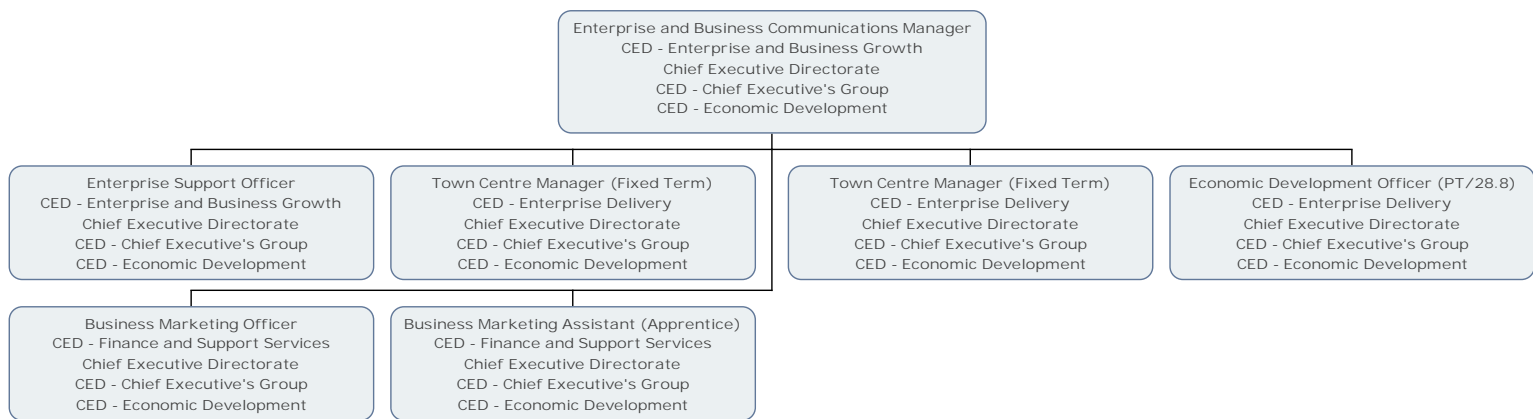
Arts and Culture Marketing and Communications Manager  
CED - Arts and Culture  
Chief Executive Directorate  
CED - Chief Executive's Group  
CED - Economic Development

Arts and Culture Marketing and Communications Assistant  
CED - Arts and Culture  
Chief Executive Directorate  
CED - Chief Executive's Group  
CED - Economic Development

Arts and Culture Programme and Partnerships Manager (PT/25.2)  
CED - Arts and Culture  
Chief Executive Directorate  
CED - Chief Executive's Group  
CED - Economic Development

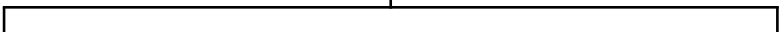
Arts and Events Manager (Winstanley) (Fixed Term)  
CED - Arts and Culture  
Chief Executive Directorate  
CED - Chief Executive's Group  
CED - Economic Development







Tourism and Investment Marketing Manager  
CED - High Streets and Local Growth  
Chief Executive Directorate  
CED - Chief Executive's Group  
CED - Economic Development



Marketing and Events Assistant (Fixed Term)  
CED - Employment Delivery  
Chief Executive Directorate  
CED - Chief Executive's Group  
CED - Economic Development

Marketing and Events Assistant (Apprentice)  
CED - High Streets and Local Growth  
Chief Executive Directorate  
CED - Chief Executive's Group  
CED - Economic Development

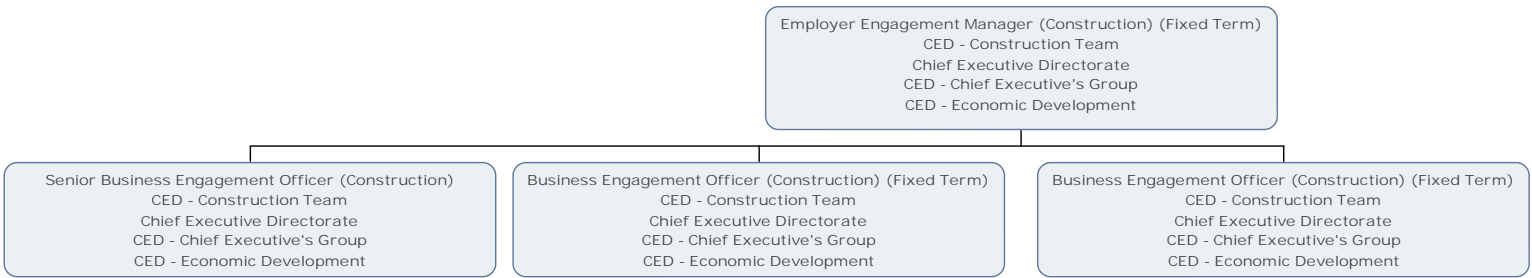


Finance and Support Services Manager  
CED - Economic Development Management  
Chief Executive Directorate  
CED - Chief Executive's Group  
CED - Economic Development

Finance and Support Services Officer  
CED - Finance and Support Services  
Chief Executive Directorate  
CED - Chief Executive's Group  
CED - Economic Development

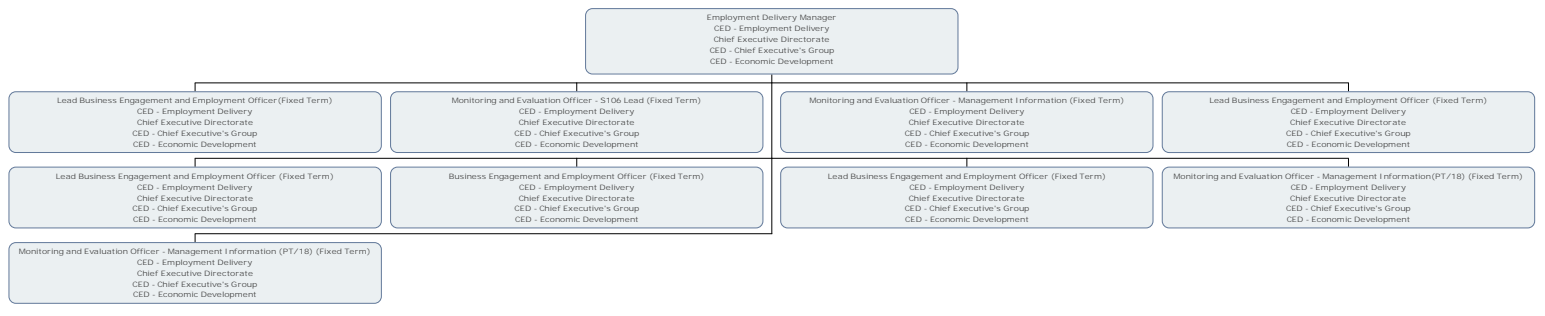






Senior Business Engagement Officer (Construction)  
CED - Construction Team  
Chief Executive Directorate  
CED - Chief Executive's Group  
CED - Economic Development

Apprentice Business Engagement Officer  
CED - Employment Delivery  
Chief Executive Directorate  
CED - Chief Executive's Group  
CED - Economic Development



Lead Business Engagement and Employment Officer (Fixed Term)  
CED - Employment Delivery  
Chief Executive Directorate  
CED - Chief Executive's Group  
CED - Economic Development

Talent Management Officer - Connecting Communities  
CED - Connecting Communities  
Chief Executive Directorate  
CED - Chief Executive's Group  
CED - Economic Development

Business Engagement and Employment Officer (Fixed Term)  
CED - Employment Delivery  
Chief Executive Directorate  
CED - Chief Executive's Group  
CED - Economic Development

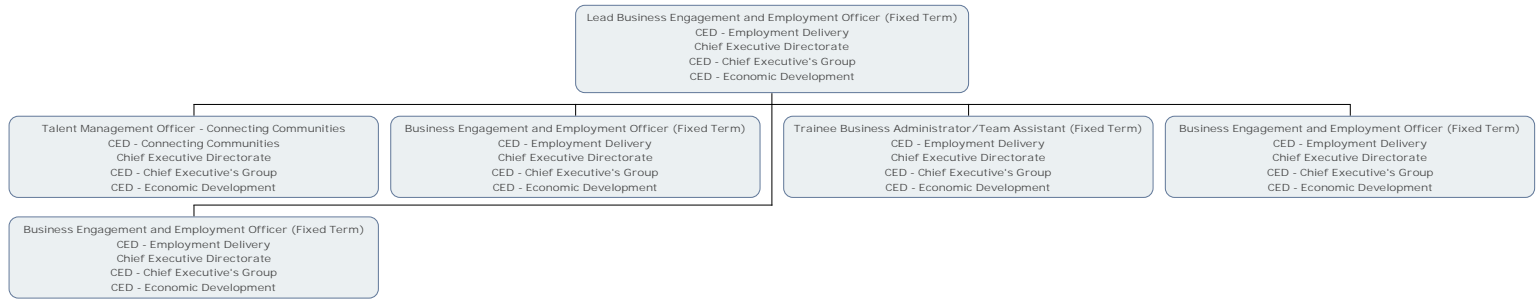
Business Engagement and Employment Officer (Fixed Term)  
CED - Employment Delivery  
Chief Executive Directorate  
CED - Chief Executive's Group  
CED - Economic Development

Lead Business Engagement and Employment Officer (Fixed Term)  
CED - Employment Delivery  
Chief Executive Directorate  
CED - Chief Executive's Group  
CED - Economic Development

Business Engagement and Employment Officer (Fixed Term)  
CED - Employment Delivery  
Chief Executive Directorate  
CED - Chief Executive's Group  
CED - Economic Development

Business Engagement and Employment Officer (Fixed Term)  
CED - Employment Delivery  
Chief Executive Directorate  
CED - Chief Executive's Group  
CED - Economic Development





Business Engagement and Employment Officer (Fixed Term)  
CED - Employment Delivery  
Chief Executive Directorate  
CED - Chief Executive's Group  
CED - Economic Development

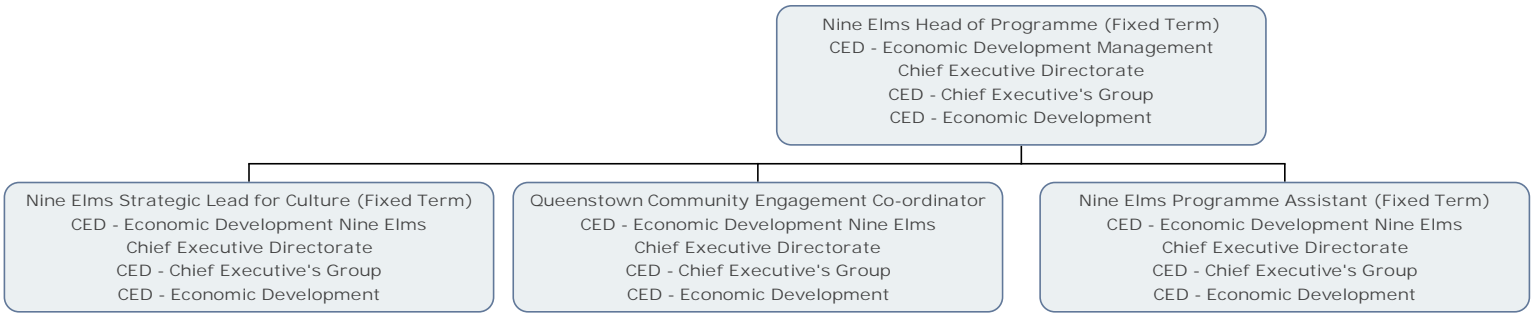
Business Engagement and Employment Officer (Fixed Term)  
CED - Employment Delivery  
Chief Executive Directorate  
CED - Chief Executive's Group  
CED - Economic Development

Monitoring and Evaluation Officer - Management Information(PT/18) (Fixed Term)  
CED - Employment Delivery  
Chief Executive Directorate  
CED - Chief Executive's Group  
CED - Economic Development

Quality and Administration Officer (Fixed Term)  
CED - Employment Delivery  
Chief Executive Directorate  
CED - Chief Executive's Group  
CED - Economic Development

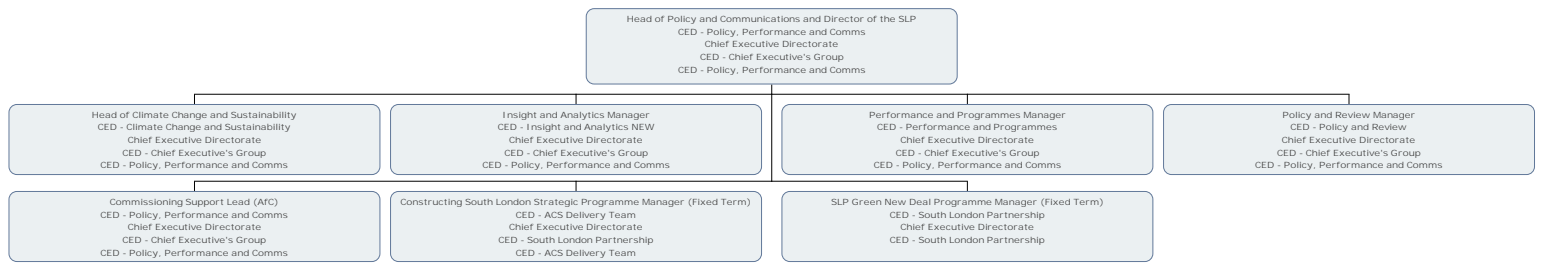






Nine Elms Strategic Lead for Culture (Fixed Term)  
CED - Economic Development Nine Elms  
Chief Executive Directorate  
CED - Chief Executive's Group  
CED - Economic Development

Arts & Events Manager  
CED - Economic Development Nine Elms  
Chief Executive Directorate  
CED - Chief Executive's Group  
CED - Economic Development





Insight and Analytics Manager  
CED - Insight and Analytics NEW  
Chief Executive Directorate  
CED - Chief Executive's Group  
CED - Policy, Performance and Comms

Intelligence Analyst  
CED - Insight and Analytics NEW  
Chief Executive Directorate  
CED - Chief Executive's Group  
CED - Policy, Performance and Comms

Intelligence Analyst  
CED - Insight and Analytics NEW  
Chief Executive Directorate  
CED - Chief Executive's Group  
CED - Policy, Performance and Comms

Intelligence Analyst  
CED - Insight and Analytics NEW  
Chief Executive Directorate  
CED - Chief Executive's Group  
CED - Policy, Performance and Comms

Intelligence Analyst  
CED - Insight and Analytics NEW  
Chief Executive Directorate  
CED - Chief Executive's Group  
CED - Policy, Performance and Comms

Analyst Support Officer (Fixed Term)  
CED - Insight and Analytics NEW  
Chief Executive Directorate  
CED - Chief Executive's Group  
CED - Policy, Performance and Comms

Analyst Support Officer (Fixed Term)  
CED - Insight and Analytics NEW  
Chief Executive Directorate  
CED - Chief Executive's Group  
CED - Policy, Performance and Comms

Data Projects Officer (Fixed Term)  
CED - Insight and Analytics NEW  
Chief Executive Directorate  
CED - Chief Executive's Group  
CED - Policy, Performance and Comms

Lead Data Scientist  
CED - Insight and Analytics NEW  
Chief Executive Directorate  
CED - Chief Executive's Group  
CED - Policy, Performance and Comms

Data Scientist (Fixed Term)  
CED - Insight and Analytics NEW  
Chief Executive Directorate  
CED - Chief Executive's Group  
CED - Policy, Performance and Comms

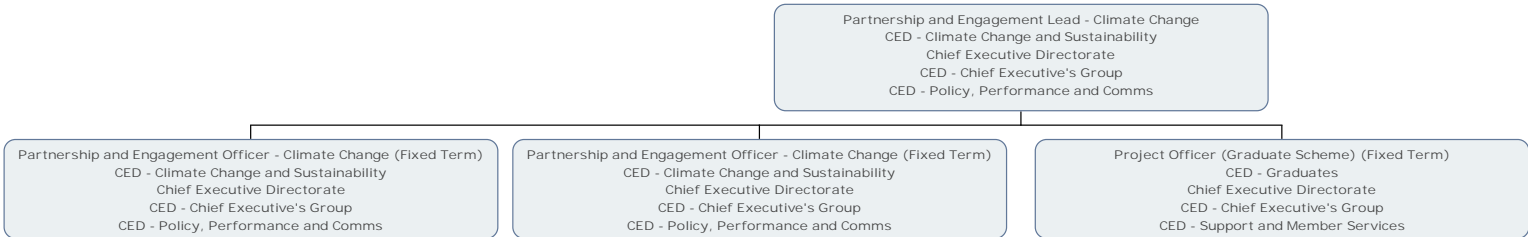
Data Science Trainee (Fixed Term)  
CED - Insight and Analytics NEW  
Chief Executive Directorate  
CED - Chief Executive's Group  
CED - Policy, Performance and Comms

Performance and Programmes Manager  
CED - Performance and Programmes  
Chief Executive Directorate  
CED - Chief Executive's Group  
CED - Policy, Performance and Comms

Performance and Programmes Officer  
CED - Performance and Programmes  
Chief Executive Directorate  
CED - Chief Executive's Group  
CED - Policy, Performance and Comms

Performance and Programme Officer  
CED - Performance and Programmes  
Chief Executive Directorate  
CED - Chief Executive's Group  
CED - Policy, Performance and Comms

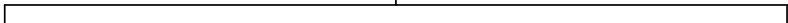




Senior Policy and Review Officer  
CED - Policy and Review  
Chief Executive Directorate  
CED - Chief Executive's Group  
CED - Policy, Performance and Comms

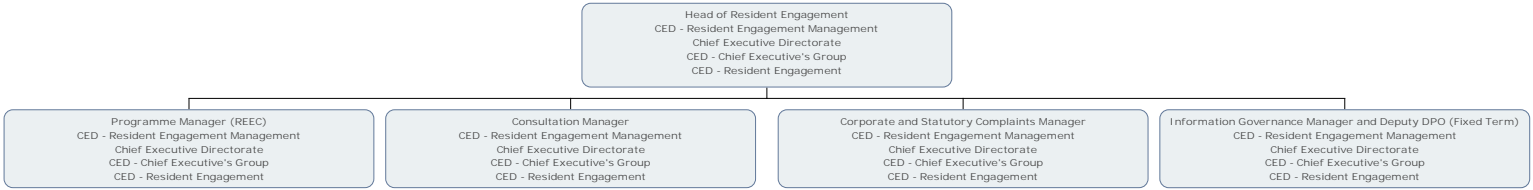
Project Officer (Graduate Scheme)  
CED - Graduates  
Chief Executive Directorate  
CED - Chief Executive's Group  
CED - Support and Member Services

Senior Policy and Review Officer  
CED - Policy and Review  
Chief Executive Directorate  
CED - Chief Executive's Group  
CED - Policy, Performance and Comms



Refugee Resettlement Policy and Operations Lead Officer (Fixed Term)  
CED - Policy and Review  
Chief Executive Directorate  
CED - Chief Executive's Group  
CED - Policy, Performance and Comms

Refugee Resettlement Policy and Operations Support Officer (Fixed Term)  
CED - Policy and Review  
Chief Executive Directorate  
CED - Chief Executive's Group  
CED - Policy, Performance and Comms



Programme Manager (REEC)  
CED - Resident Engagement Management  
Chief Executive Directorate  
CED - Chief Executive's Group  
CED - Resident Engagement

Senior Project Officer  
CED - Programme Team NEW  
Chief Executive Directorate  
CED - Chief Executive's Group  
CED - Resident Engagement



Senior Project Officer  
CED - Programme Team NEW  
Chief Executive Directorate  
CED - Chief Executive's Group  
CED - Resident Engagement

Administration and Project Support Officer (Fixed Term)  
CED - Programme Team NEW  
Chief Executive Directorate  
CED - Chief Executive's Group  
CED - Resident Engagement

Consultation Manager  
CED - Resident Engagement Management  
Chief Executive Directorate  
CED - Chief Executive's Group  
CED - Resident Engagement

Consultation Officer  
CED - Consultation  
Chief Executive Directorate  
CED - Chief Executive's Group  
CED - Resident Engagement

Consultation Officer PT/21.6 (Fixed Term)  
CED - Consultation  
Chief Executive Directorate  
CED - Chief Executive's Group  
CED - Resident Engagement

Senior Consultation Officer  
CED - Consultation  
Chief Executive Directorate  
CED - Chief Executive's Group  
CED - Resident Engagement

Consultation Officer  
CED - Consultation  
Chief Executive Directorate  
CED - Chief Executive's Group  
CED - Resident Engagement

Corporate and Statutory Complaints Manager  
CED - Resident Engagement Management  
Chief Executive Directorate  
CED - Chief Executive's Group  
CED - Resident Engagement

Adults and Children's Complaints Manager  
CED - Complaints Team  
Chief Executive Directorate  
CED - Chief Executive's Group  
CED - Resident Engagement

Corporate and LGO Complaints Manager  
CED - Complaints Team  
Chief Executive Directorate  
CED - Chief Executive's Group  
CED - Resident Engagement

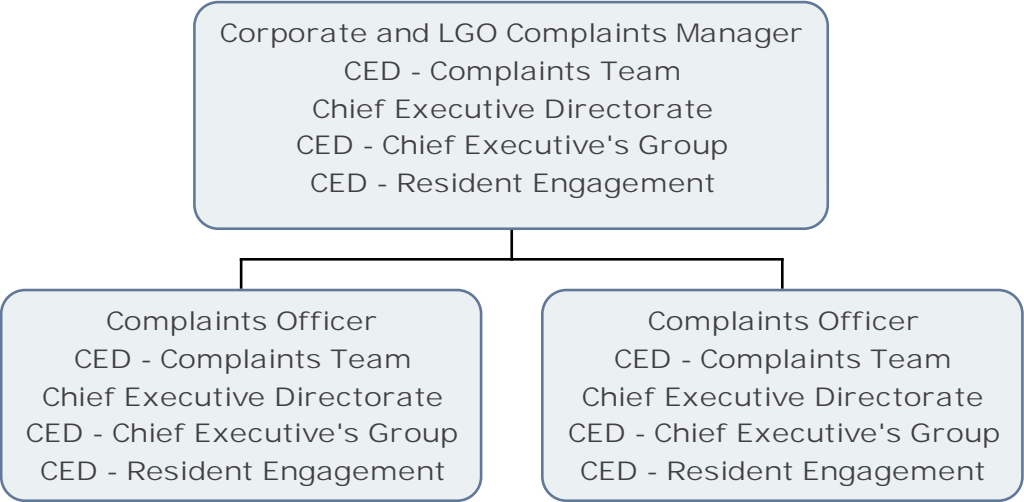
Adults and Children's Complaints Manager  
CED - Complaints Team  
Chief Executive Directorate  
CED - Chief Executive's Group  
CED - Resident Engagement

Complaints Officer  
CED - Complaints Team  
Chief Executive Directorate  
CED - Chief Executive's Group  
CED - Resident Engagement

Complaints Officer  
CED - Complaints Team  
Chief Executive Directorate  
CED - Chief Executive's Group  
CED - Resident Engagement

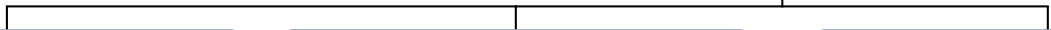
Complaints Officer (Fixed Term)  
CED - Complaints Team  
Chief Executive Directorate  
CED - Chief Executive's Group  
CED - Resident Engagement

Complaints Officer  
CED - Complaints Team  
Chief Executive Directorate  
CED - Chief Executive's Group  
CED - Resident Engagement





Head of Communities and Strategic Partnerships  
CED - Community and Partnerships  
Chief Executive Directorate  
CED - Chief Executive's Group  
CED - Stronger and Safer Communities

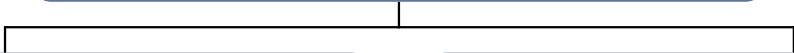


Voluntary Sector Partnership Manager  
CED - Community and Partnerships  
Chief Executive Directorate  
CED - Chief Executive's Group  
CED - Stronger and Safer Communities

Partnership Officer (Fixed Term)  
CED - Community and Partnerships  
Chief Executive Directorate  
CED - Chief Executive's Group  
CED - Stronger and Safer Communities

Community Engagement Manager  
CED - Community and Partnerships  
Chief Executive Directorate  
CED - Chief Executive's Group  
CED - Stronger and Safer Communities

Voluntary Sector Partnership Manager  
CED - Community and Partnerships  
Chief Executive Directorate  
CED - Chief Executive's Group  
CED - Stronger and Safer Communities



Senior Project Officer (Voluntary Sector)  
CED - Community and Partnerships  
Chief Executive Directorate  
CED - Chief Executive's Group  
CED - Stronger and Safer Communities

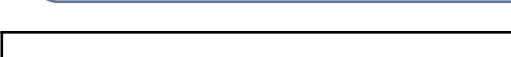
Senior Grants Development Officer (Voluntary Sector)  
CED - Community and Partnerships  
Chief Executive Directorate  
CED - Chief Executive's Group  
CED - Stronger and Safer Communities



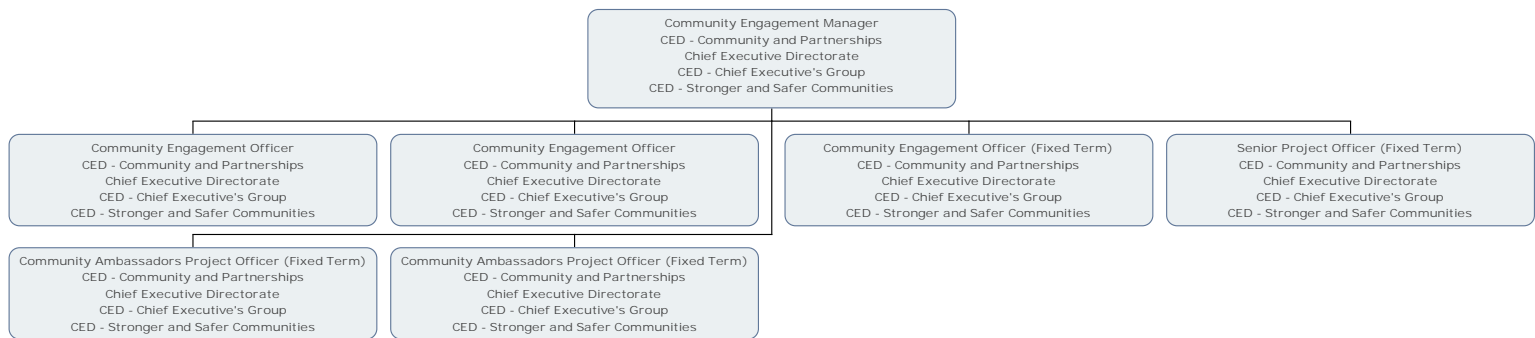
Senior Project Officer (Voluntary Sector)  
CED - Community and Partnerships  
Chief Executive Directorate  
CED - Chief Executive's Group  
CED - Stronger and Safer Communities

Community Grants Officer (Fixed Term)  
CED - Community and Partnerships  
Chief Executive Directorate  
CED - Chief Executive's Group  
CED - Stronger and Safer Communities

Senior Grants Development Officer (Voluntary Sector)  
CED - Community and Partnerships  
Chief Executive Directorate  
CED - Chief Executive's Group  
CED - Stronger and Safer Communities



Wandsworth Grants and Project Support Officer (Fixed Term)  
CED - Community and Partnerships  
Chief Executive Directorate  
CED - Chief Executive's Group  
CED - Stronger and Safer Communities



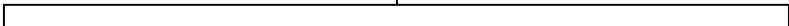
Strategic Project Officer  
CED - Community and Partnerships  
Chief Executive Directorate  
CED - Chief Executive's Group  
CED - Stronger and Safer Communities

Apprentice Administrator  
CED - Community and Partnerships  
Chief Executive Directorate  
CED - Chief Executive's Group  
CED - Stronger and Safer Communities

Voluntary Sector Development Manager  
CED - Community and Partnerships  
Chief Executive Directorate  
CED - Chief Executive's Group  
CED - Stronger and Safer Communities

Voluntary Sector Support Officer (Fixed Term)  
CED - Community and Partnerships  
Chief Executive Directorate  
CED - Chief Executive's Group  
CED - Stronger and Safer Communities

Stronger and Safer Communities Business Manager  
CED - Community Safety  
Chief Executive Directorate  
CED - Chief Executive's Group  
CED - Stronger and Safer Communities



Prevent Co-ordinator  
CED - Community Safety  
Chief Executive Directorate  
CED - Chief Executive's Group  
CED - Stronger and Safer Communities

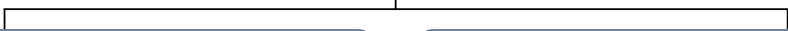
Community Safety Transformation Project Implementation Lead  
CED - Community Safety  
Chief Executive Directorate  
CED - Chief Executive's Group  
CED - Stronger and Safer Communities

Neighbourhoods and Criminal Justice Manager  
CED - Community Safety  
Chief Executive Directorate  
CED - Chief Executive's Group  
CED - Stronger and Safer Communities

Assertive Outreach Worker  
CED - Community Safety  
Chief Executive Directorate  
CED - Chief Executive's Group  
CED - Stronger and Safer Communities

Serious Violence Manager  
CED - Community Safety  
Chief Executive Directorate  
CED - Chief Executive's Group  
CED - Stronger and Safer Communities

Serious Violence Manager  
CED - Community Safety  
Chief Executive Directorate  
CED - Chief Executive's Group  
CED - Stronger and Safer Communities



Serious Violence Community Coordinator (Fixed Term)  
CED - Community Safety  
Chief Executive Directorate  
CED - Chief Executive's Group  
CED - Stronger and Safer Communities

Vulnerable Adolescents Supported into Adulthood (VASA) Coordinator  
CED - Community Safety  
Chief Executive Directorate  
CED - Chief Executive's Group  
CED - Stronger and Safer Communities



Team Manager  
CED - Community Safety  
Chief Executive Directorate  
CED - Chief Executive's Group  
CED - Stronger and Safer Communities

Community Safety Officer (PT/18)  
CED - Community Safety  
Chief Executive Directorate  
CED - Chief Executive's Group  
CED - Stronger and Safer Communities

IOM Partnership Manager  
CED - Community Safety  
Chief Executive Directorate  
CED - Chief Executive's Group  
CED - Stronger and Safer Communities

Community Safety Officer (PT/18)  
CED - Community Safety  
Chief Executive Directorate  
CED - Chief Executive's Group  
CED - Stronger and Safer Communities

Community Safety Officer  
CED - Community Safety  
Chief Executive Directorate  
CED - Chief Executive's Group  
CED - Stronger and Safer Communities

Community Safety Officer  
CED - Community Safety  
Chief Executive Directorate  
CED - Chief Executive's Group  
CED - Stronger and Safer Communities

Community Safety Officer  
CED - Community Safety  
Chief Executive Directorate  
CED - Chief Executive's Group  
CED - Stronger and Safer Communities

Community Safety Officer  
CED - Community Safety  
Chief Executive Directorate  
CED - Chief Executive's Group  
CED - Stronger and Safer Communities

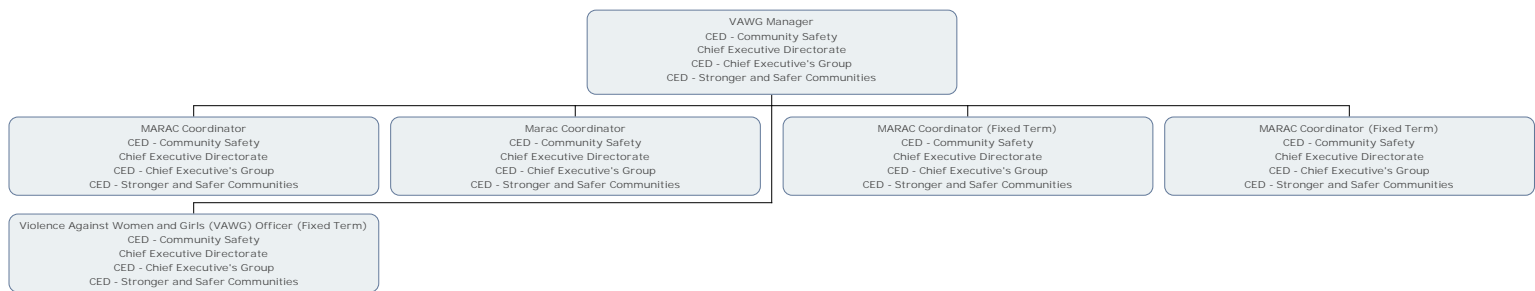
Community Safety Officer  
CED - Community Safety  
Chief Executive Directorate  
CED - Chief Executive's Group  
CED - Stronger and Safer Communities

IOM Partnership Manager  
CED - Community Safety  
Chief Executive Directorate  
CED - Chief Executive's Group  
CED - Stronger and Safer Communities

Assertive Outreach Worker  
CED - Community Safety  
Chief Executive Directorate  
CED - Chief Executive's Group  
CED - Stronger and Safer Communities

Individual Support Action (ISA) Practitioner (Fixed Term)  
CED - Community Safety  
Chief Executive Directorate  
CED - Chief Executive's Group  
CED - Stronger and Safer Communities





Head of the Leader's Office  
CED - Leader's Office - Wandsworth  
Chief Executive Directorate  
CED - Chief Executive's Group  
CED - Support and Member Services

Leaders Support and PA - Wandsworth  
CED - Corporate and Leaders Support Team  
Chief Executive Directorate  
CED - Chief Executive's Group  
CED - Support and Member Services

Cabinet Support and Policy Officer  
CED - Leader's Office - Wandsworth  
Chief Executive Directorate  
CED - Chief Executive's Group  
CED - Support and Member Services

Cabinet Support and Policy Officer  
CED - Leader's Office - Wandsworth  
Chief Executive Directorate  
CED - Chief Executive's Group  
CED - Support and Member Services

Cabinet Support and Policy Officer  
CED - Leader's Office - Wandsworth  
Chief Executive Directorate  
CED - Chief Executive's Group  
CED - Support and Member Services

Leaders Support and PA - Wandsworth  
CED - Corporate and Leaders Support Team  
Chief Executive Directorate  
CED - Chief Executive's Group  
CED - Support and Member Services

Corporate and Leaders Support Officer (Fixed Term)  
CED - Corporate and Leaders Support Team  
Chief Executive Directorate  
CED - Chief Executive's Group  
CED - Support and Member Services

Monitoring Officer  
CED - Chief Executive's Group  
Chief Executive Directorate  
CED - Chief Executive's Group

Head of Governance  
CED - Democratic Services  
Chief Executive Directorate  
CED - Chief Executive's Group  
CED - Democratic Services

Head of Support and Member Services  
CED - Support and Member Services  
Chief Executive Directorate  
CED - Chief Executive's Group  
CED - Support and Member Services



Head of Governance  
CED - Democratic Services  
Chief Executive Directorate  
CED - Chief Executive's Group  
CED - Democratic Services



Democratic Services Manager  
CED - Democratic Services Wandsworth  
Chief Executive Directorate  
CED - Chief Executive's Group  
CED - Democratic Services

Democratic Services Manager  
CED - Democratic Services Wandsworth  
Chief Executive Directorate  
CED - Chief Executive's Group  
CED - Democratic Services

Deputy Head of Governance  
CED - Democratic Services  
Chief Executive Directorate  
CED - Chief Executive's Group  
CED - Democratic Services

Democratic Services Manager  
CED - Democratic Services Wandsworth  
Chief Executive Directorate  
CED - Chief Executive's Group  
CED - Democratic Services

Democratic Services Officer  
CED - Democratic Services Wandsworth  
Chief Executive Directorate  
CED - Chief Executive's Group  
CED - Democratic Services

Democratic Services Officer  
CED - Democratic Services Wandsworth  
Chief Executive Directorate  
CED - Chief Executive's Group  
CED - Democratic Services

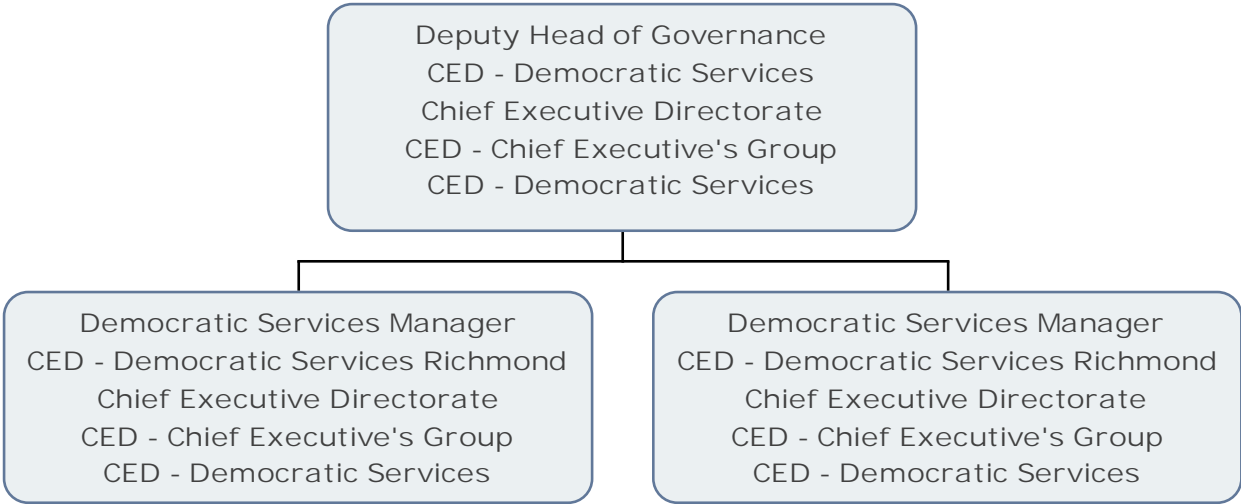
Democratic Services Manager  
CED - Democratic Services Wandsworth  
Chief Executive Directorate  
CED - Chief Executive's Group  
CED - Democratic Services

Democratic Services Officer  
CED - Democratic Services Wandsworth  
Chief Executive Directorate  
CED - Chief Executive's Group  
CED - Democratic Services

Democratic Services Officer  
CED - Democratic Services Wandsworth  
Chief Executive Directorate  
CED - Chief Executive's Group  
CED - Democratic Services

Democratic Services Officer  
CED - Democratic Services Wandsworth  
Chief Executive Directorate  
CED - Chief Executive's Group  
CED - Democratic Services

Democratic Services Officer  
CED - Democratic Services Wandsworth  
Chief Executive Directorate  
CED - Chief Executive's Group  
CED - Democratic Services



Democratic Services Manager  
CED - Democratic Services Richmond  
Chief Executive Directorate  
CED - Chief Executive's Group  
CED - Democratic Services

Democratic Services Officer  
CED - Democratic Services Richmond  
Chief Executive Directorate  
CED - Chief Executive's Group  
CED - Democratic Services

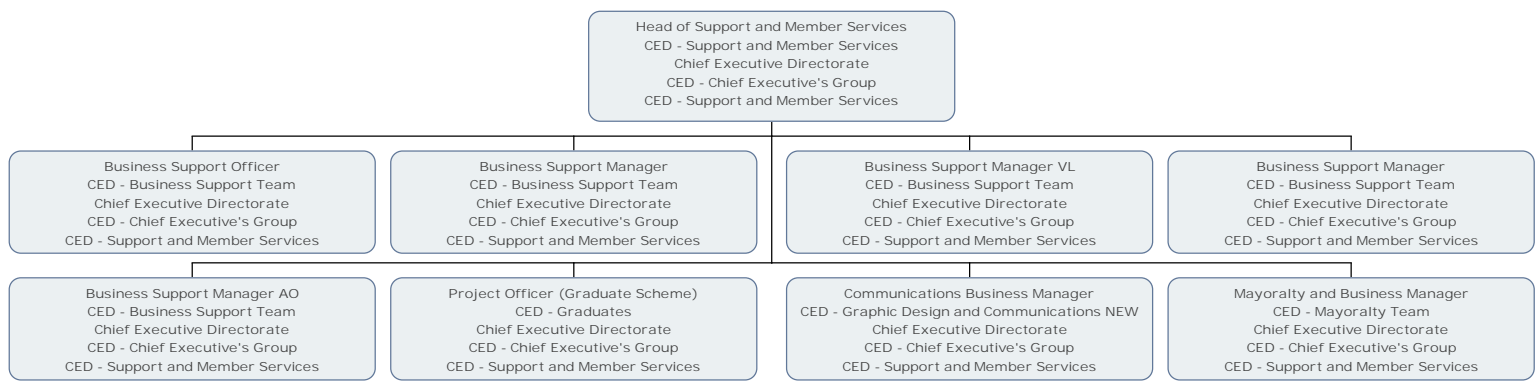
Democratic Services Manager  
CED - Democratic Services Richmond  
Chief Executive Directorate  
CED - Chief Executive's Group  
CED - Democratic Services

Democratic Services Officer  
CED - Democratic Services Richmond  
Chief Executive Directorate  
CED - Chief Executive's Group  
CED - Democratic Services

Democratic Services Officer  
CED - Democratic Services Richmond  
Chief Executive Directorate  
CED - Chief Executive's Group  
CED - Democratic Services

Democratic Services Officer  
CED - Democratic Services Richmond  
Chief Executive Directorate  
CED - Chief Executive's Group  
CED - Democratic Services

Democratic Services Officer  
CED - Democratic Services Richmond  
Chief Executive Directorate  
CED - Chief Executive's Group  
CED - Democratic Services



Head of Support and Member Services  
 CED - Support and Member Services  
 Chief Executive Directorate  
 CED - Chief Executive's Group  
 CED - Support and Member Services

Business Support Officer  
 CED - Business Support Team  
 Chief Executive Directorate  
 CED - Chief Executive's Group  
 CED - Support and Member Services

Business Support Manager  
 CED - Business Support Team  
 Chief Executive Directorate  
 CED - Chief Executive's Group  
 CED - Support and Member Services

Business Support Manager VL  
 CED - Business Support Team  
 Chief Executive Directorate  
 CED - Chief Executive's Group  
 CED - Support and Member Services

Business Support Manager  
 CED - Business Support Team  
 Chief Executive Directorate  
 CED - Chief Executive's Group  
 CED - Support and Member Services

Business Support Manager AO  
 CED - Business Support Team  
 Chief Executive Directorate  
 CED - Chief Executive's Group  
 CED - Support and Member Services

Project Officer (Graduate Scheme)  
 CED - Graduates  
 Chief Executive Directorate  
 CED - Chief Executive's Group  
 CED - Support and Member Services

Communications Business Manager  
 CED - Graphic Design and Communications NEW  
 Chief Executive Directorate  
 CED - Chief Executive's Group  
 CED - Support and Member Services

Mayoralty and Business Manager  
 CED - Mayoralty Team  
 Chief Executive Directorate  
 CED - Chief Executive's Group  
 CED - Support and Member Services

Business Support Manager VL  
CED - Business Support Team  
Chief Executive Directorate  
CED - Chief Executive's Group  
CED - Support and Member Services

Business Support Officer  
CED - Business Support Team  
Chief Executive Directorate  
CED - Chief Executive's Group  
CED - Support and Member Services

Business Support Officer  
CED - Business Support Team  
Chief Executive Directorate  
CED - Chief Executive's Group  
CED - Support and Member Services



Business Support Manager  
CED - Business Support Team  
Chief Executive Directorate  
CED - Chief Executive's Group  
CED - Support and Member Services

Business Support Officer  
CED - Business Support Team  
Chief Executive Directorate  
CED - Chief Executive's Group  
CED - Support and Member Services

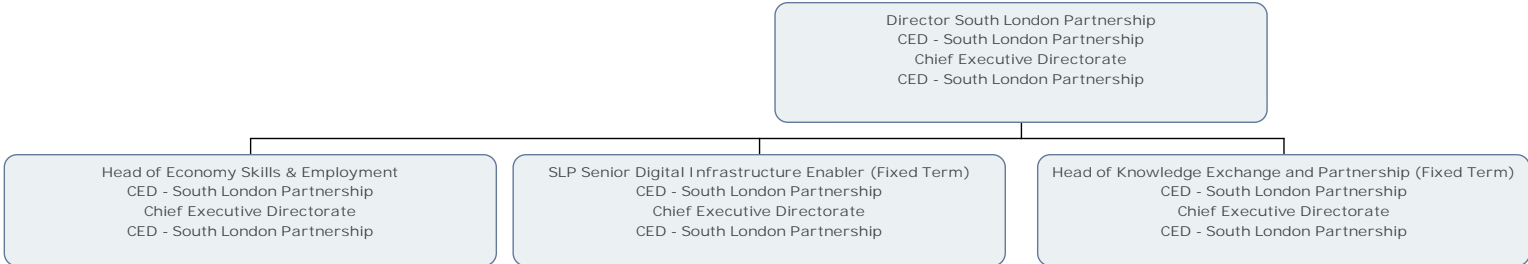
Communications Business Manager  
CED - Graphic Design and Communications NEW  
Chief Executive Directorate  
CED - Chief Executive's Group  
CED - Support and Member Services

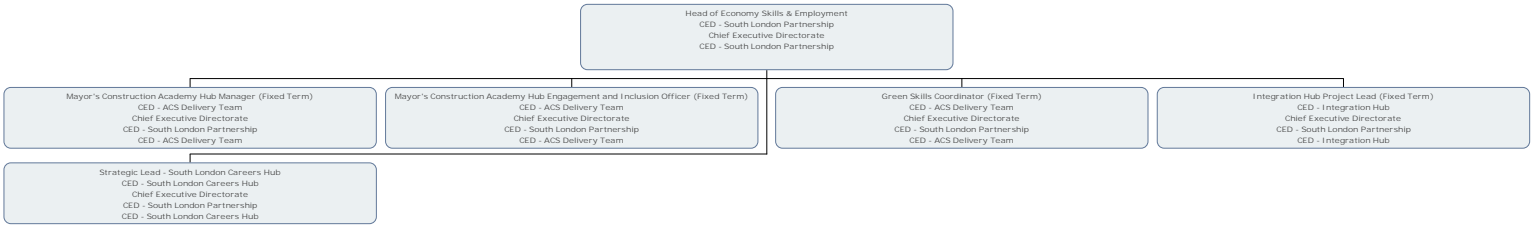


Lead Graphic Designer  
CED - Graphic Design and Communications NEW  
Chief Executive Directorate  
CED - Chief Executive's Group  
CED - Support and Member Services

Design Admin & Finance Officer  
CED - Graphic Design and Communications NEW  
Chief Executive Directorate  
CED - Chief Executive's Group  
CED - Support and Member Services







Integration Hub Project Lead (Fixed Term)  
CED - Integration Hub  
Chief Executive Directorate  
CED - South London Partnership  
CED - Integration Hub

Integration Hub Project Officer (Fixed Term)  
CED - Integration Hub  
Chief Executive Directorate  
CED - South London Partnership  
CED - Integration Hub

Strategic Lead - South London Careers Hub  
CED - South London Careers Hub  
Chief Executive Directorate  
CED - South London Partnership  
CED - South London Careers Hub



Employment Engagement Coordinator (Fixed Term)  
CED - South London Careers Hub  
Chief Executive Directorate  
CED - South London Partnership  
CED - South London Careers Hub

Operational Lead - South London Careers Hub  
CED - South London Careers Hub  
Chief Executive Directorate  
CED - South London Partnership  
CED - South London Careers Hub

