

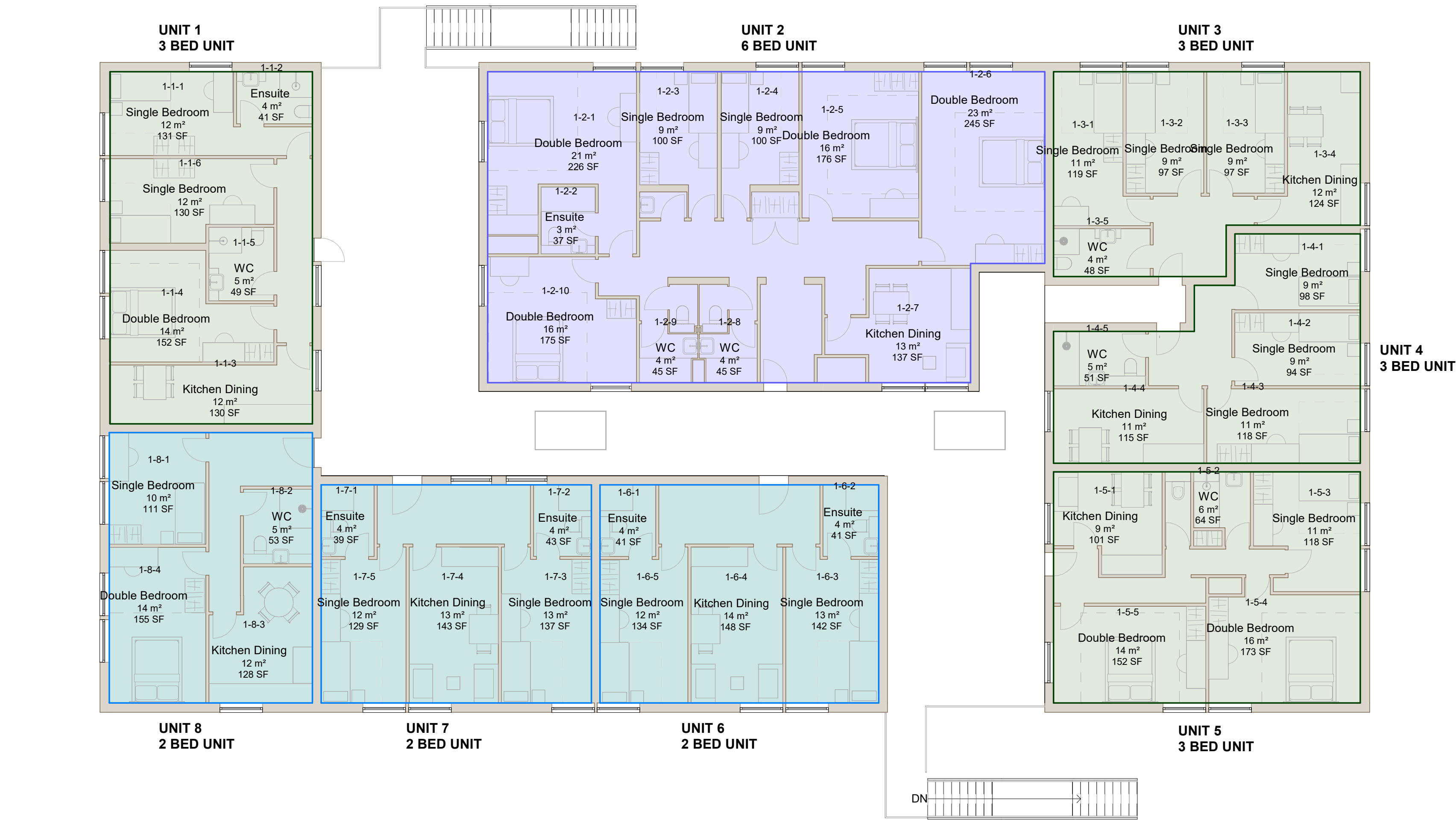
General Notes

This drawing is copyright of KSR architects. This drawing must be read in conjunction with the Designer's Risk Assessment, specification and all other relevant documentation and drawings.

KSR architects accept no liability for any expense, loss or damage of whatsoever nature and however arising from any variation made to this drawing or in the execution of the work to which it relates which has not been referred to them and their approval obtained.

Areas are based on unchecked survey and are approximate only. Do not scale from this drawing or the digital data, only figured dimensions are to be used. Refer to linear scale for guidance.

Check all dimensions on site prior to carrying out any works and advise any discrepancy



1 Proposed 01. First floor
1 : 100

- 2 BED UNIT
- 3 BED UNIT
- 4 BED UNIT
- 6 BED UNIT

Rev	Description	Date	By
Status:			

Information

KSR ARCHITECTS & INTERIOR DESIGNERS

KSR Architects LLP
14 Greenland Street
London NW1 0ND

info@ksrarchitects.com
t: +44 (0)20 7692 5000
www.ksrarchitects.com

Project:
Mount Clare House Student Accommodation

Drawing Title:

Picasso House - Proposed First Floor Plan

Date of first issue: 14/11/24
Scale: 1:100 @A1

Drawn By: AB
Checked By: DC
© KSR Architects

Drawing No: **23047-P1-111**
Rev:

