

JSNA
Joint Strategic Needs Assessment

WANDSWORTH JSNA 2021

Summary of the key points

TOOTING BROADWAY

Produced by Wandsworth JSNA
Strategic and Operational groups.

Public Health



Content

This is an executive summary slide deck of the analysis of the 6 JSNA chapters covering:

- People- Population overview
- Start well - Indicators of Health and Wellbeing
- Start Well - Children looked after
- Live Well - Indicators of Health and Wellbeing
- Live Well - Healthy behaviours and lifestyle
- Age Well - Indicators of Health and Wellbeing
- Community Voice
- Place - Wider determinants
- Place - Healthy environments, communities and neighbourhoods

COVID-19 Impact on the JSNA Report

The COVID-19 pandemic in 2020 has had multiple and wide ranging impacts on the population. It has increased and expanded the role of both statutory and voluntary sector organisations, and other community led services. The Pandemic has created a whole new set of challenges for carers, hospitals, GPs, and care homes, leaving in its wake health and social care service backlogs, establishment, and management of a new and significant vaccination programme. The impacts span the life course and wide-ranging issues from political, economic, social, technology, lifestyle, and health.

The pandemic has highlighted more starkly, issues such as health and social inequalities and deprivation, anxiety and mental ill-health, and many others. The JSNA health outcomes and wider determinants data presented in this JSNA generally predate the pandemic and could be expected to deteriorate in areas such as life expectancy, mortality, and morbidity rates. Mortality from COVID-19 has had an unequal impact on different population sub-groups and exacerbated health inequalities; however, this will not be fully reflected in this JSNA as the data is not yet available at a local level. It remains important to monitor pre-Covid time trends to understand the baseline from which to measure the local effects of Covid on key statistics. The Protect Well chapter has more detailed COVID health outcomes and impact. It is expected that the first post-COVID information will be available in the next 12 months as we continue to monitor the available information.

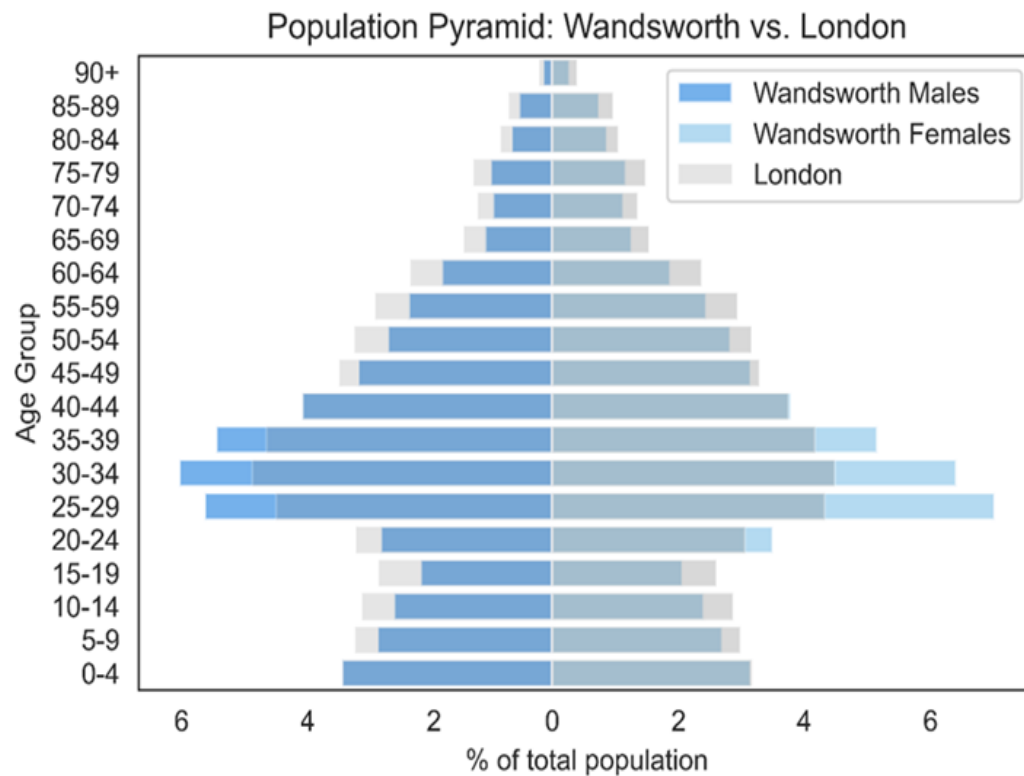
PEOPLE: Population Overview

Public Health



Population

- Estimated 335,468 residents in 2021
- By 2031 the population is expected to increase to more than 355,000 (6% increase from 2021)
- Second largest population in inner London
- Mobile, young, educated and economically active
- One of the youngest populations in the country, with a median age around 33.7 years (London=35.1)
- Almost 1 in 3 residents live alone



Population

Start Well: Population under 18 years

- 19% (64,847) of the total population are under 18 (2021)
- A third of all households have children
- The population of 0-17 year olds is projected to increase by 4% by 2041
- 17% of children aged under 16 live in poverty
- 0.4% families are classed as homeless, worse than both London and England
- 45% of children and young people in Wandsworth are from a Black Minority or Asian Background compared to 30% across whole population
- There was a higher proportion (18%, 8,000) of children with special needs attending Wandsworth schools compared to the rest of London (15%), and England (15%)

Live Well: 18 – 64 year

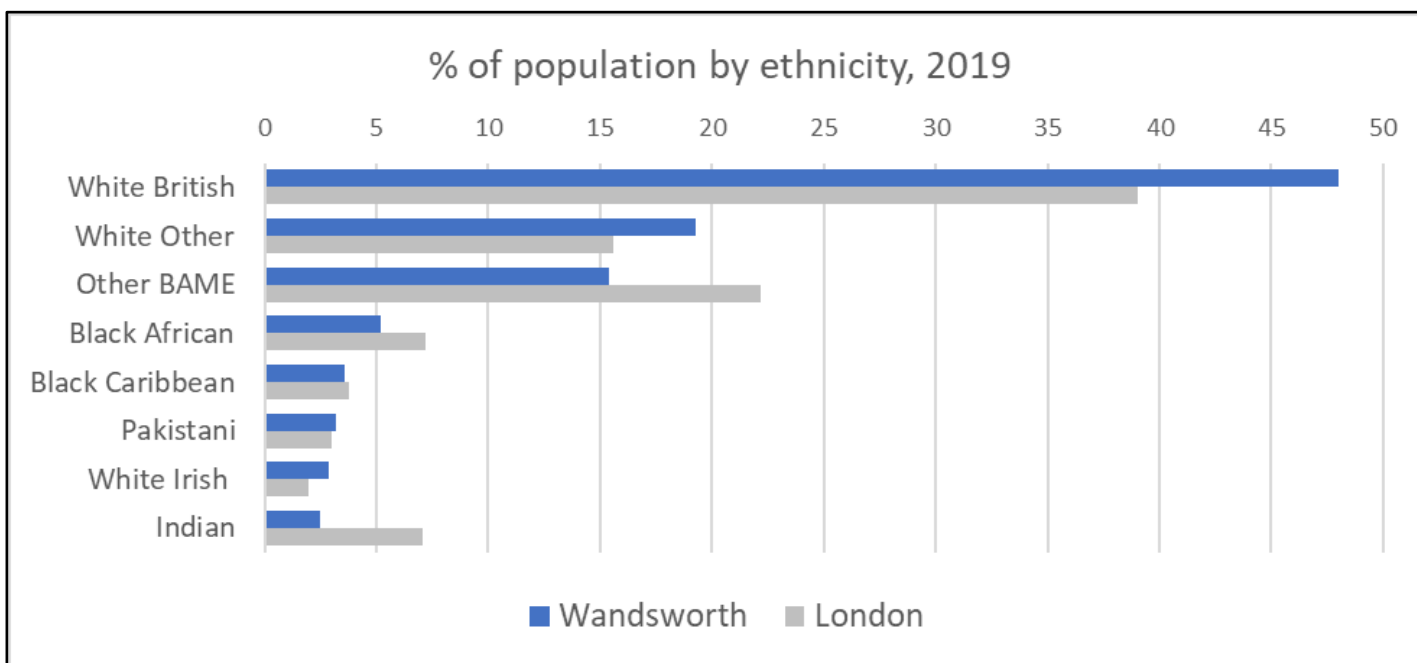
- 71% of the total population are aged 18-64 (2021)
- Proportion of under 20s and over 45 years is smaller than the London average.
- Wandsworth has a higher proportion of people aged 25 to 39 than London –particularly females aged 25-34.

Age Well: Over 65 years

- 10% (32,629) of the total population are 65 years and older, lower proportion than London (12%)
- the population is predicted to increase to 49,888 (13.% of population in 2035).

Ethnicity

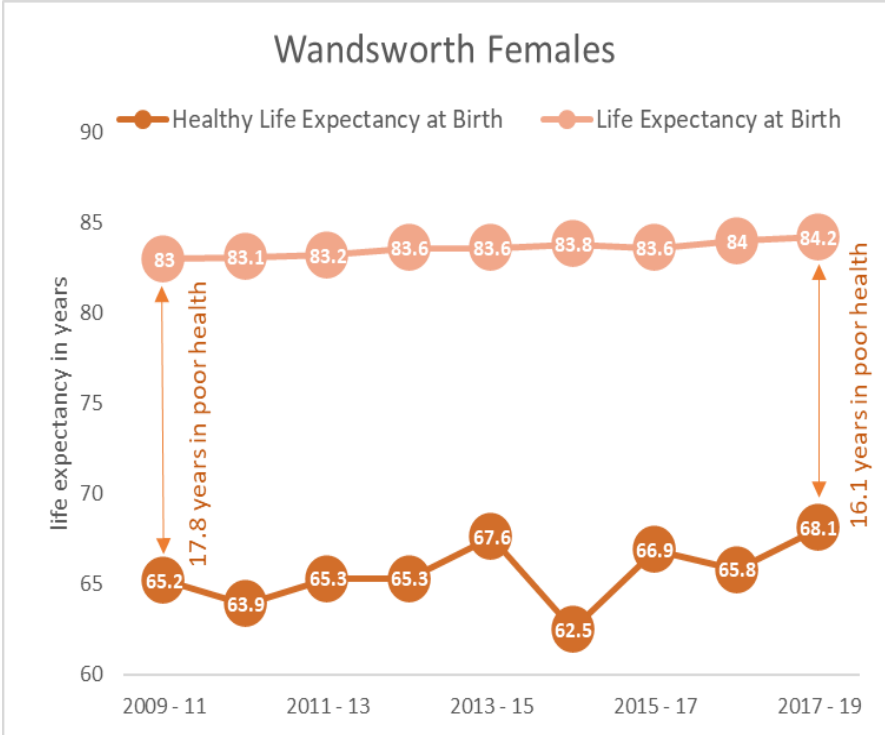
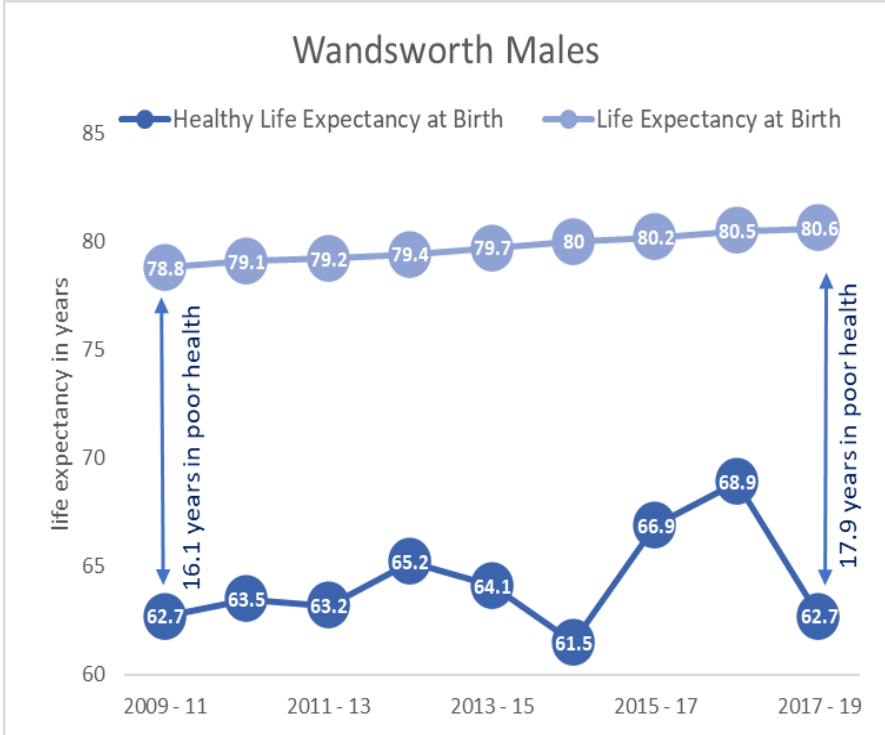
- The BAME population is younger with higher proportion of children and fewer older people.
- The BAME population will stay relatively similar at around 30%, and among children will continue to make up almost 45% of the under 18 population
- BAME population is higher in the South and North-East of the borough. The BAME population account for more than half of the population in Tooting (at 53%)
- English Proficiency is high with English language usage increasing



Life Expectancy (LE) and Healthy Life Expectancy (HLE) Female and Male

AT BIRTH

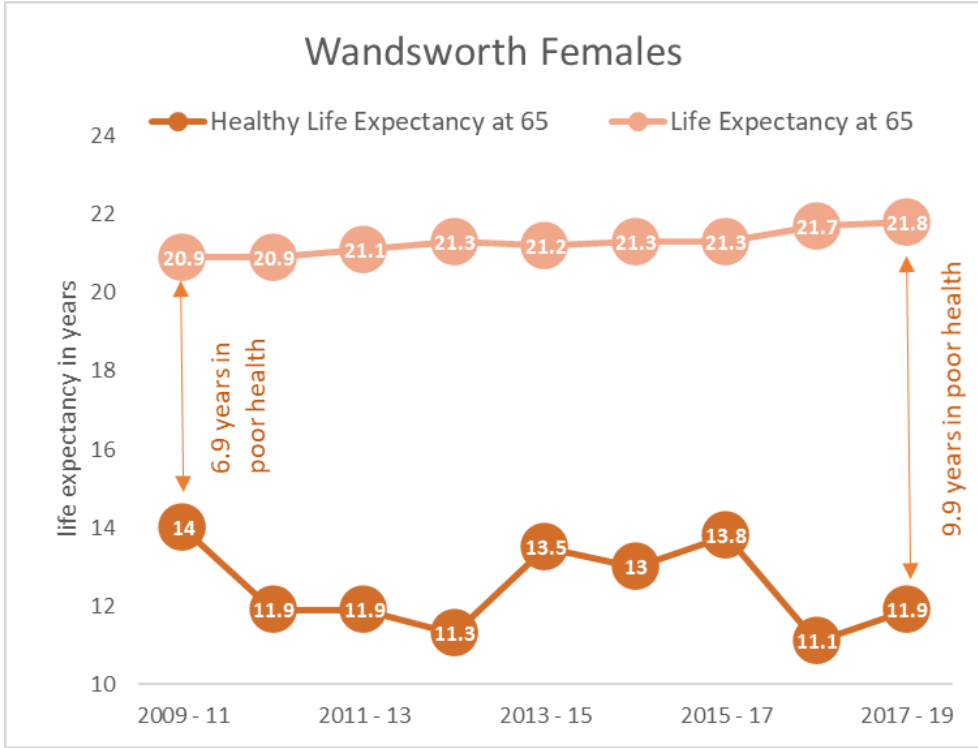
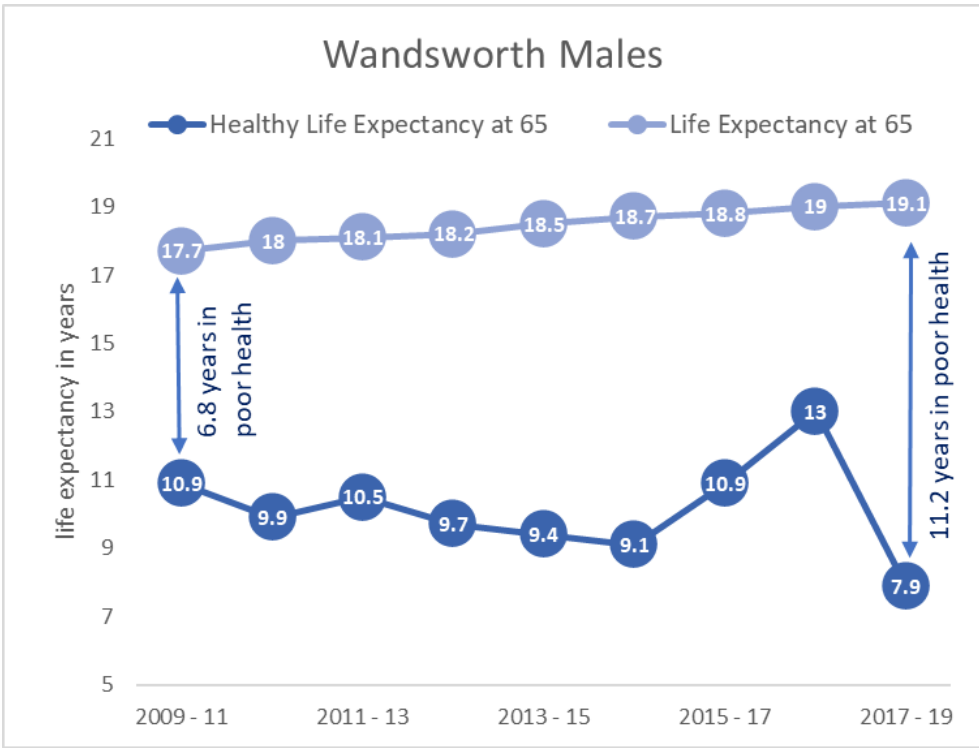
- Male and female life expectancy at birth steadily increases
- Healthy life expectancy at birth fluctuates from year to year
- Female healthy life expectancy continues to increase with the latest of 68.1 years being the highest on record
- Male HLE has been the highest in 2016-18 but has decreased from 68.9 years to 62.7 years in 2017-19.



Life Expectancy (LE) and Healthy Life Expectancy (HLE) Female and Male

AT AGE 65

- Male and female life expectancy at age 65 continues to increase
- Similarly to HLE at birth, HLE at 65 fluctuates year on year
- Male healthy life expectancy at age 65 has dropped by more than 5 years - from 13 years in 2016-18 to 7.9 years in 2017-19



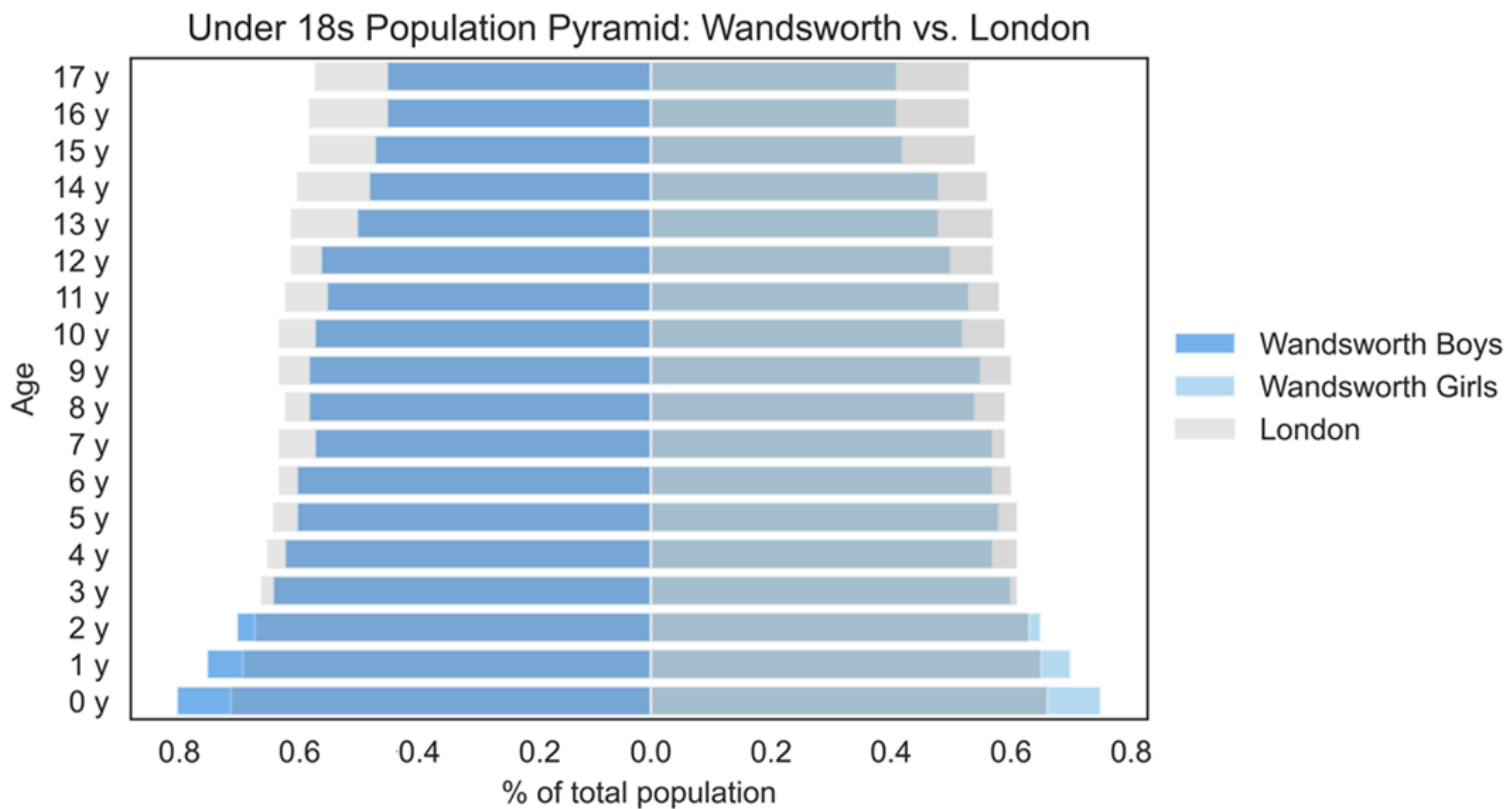
START WELL: Indicators of Health and Wellbeing

Public Health



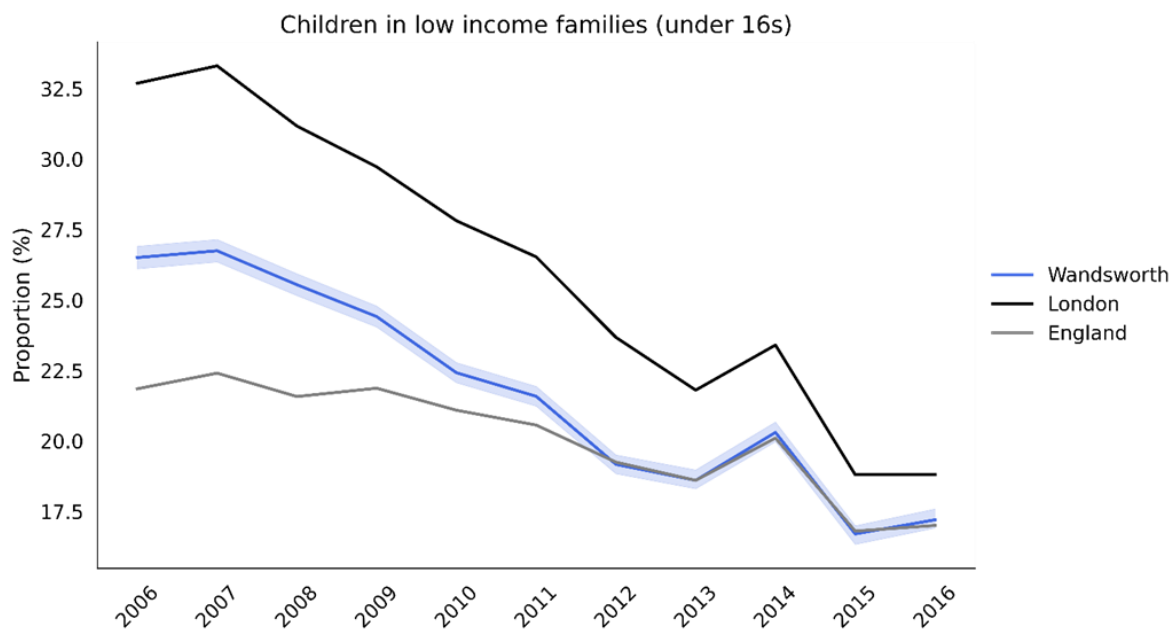
Population: Start Well

- 19.3% (64,847) of the total population are under 18 years
- A third of all households containing children.
- The largest proportion of children and young people under the age of 18 years are aged 0–4 years (33.5%)
- The proportion of children in the borough is lower than the London average (21.8%)
- The proportion of children under 3 years of is higher than in London



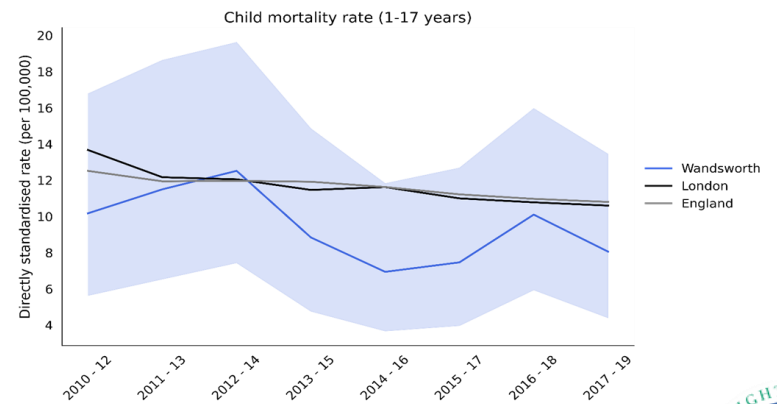
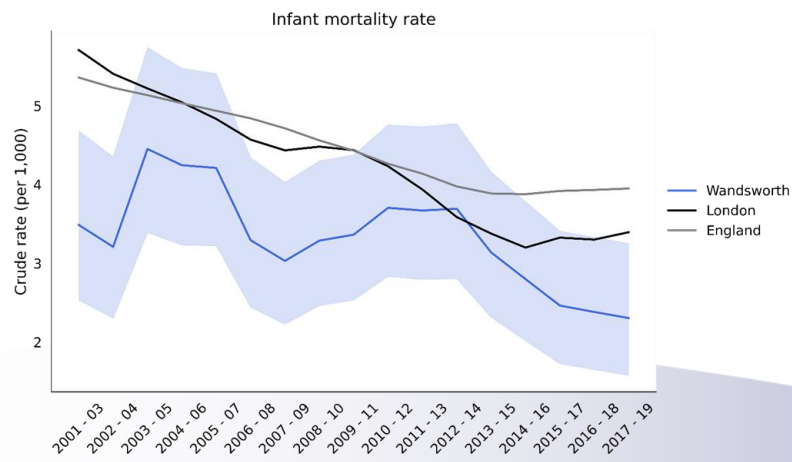
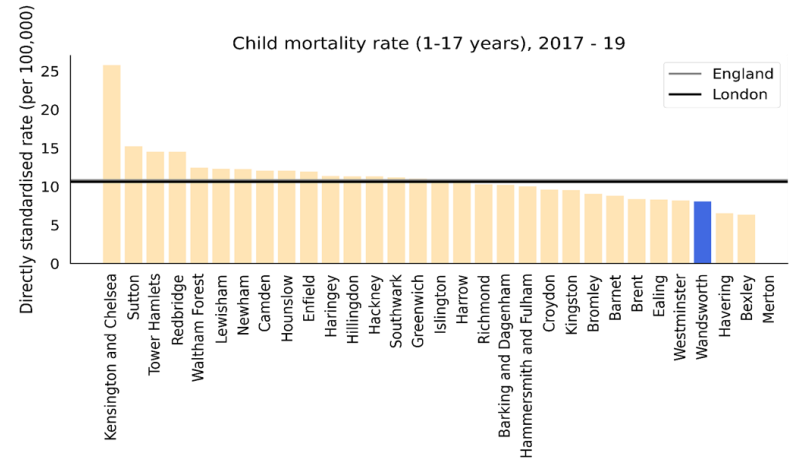
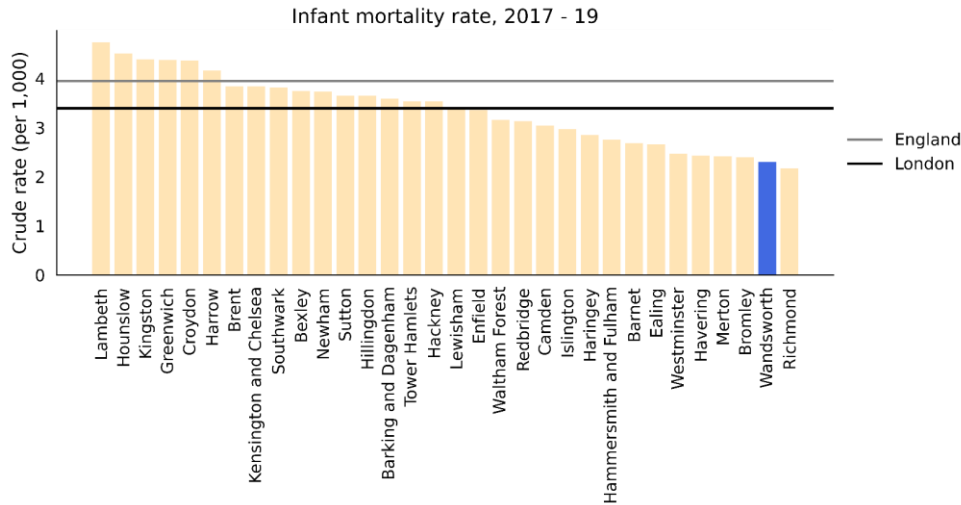
Child Poverty

- The level of child poverty in Wandsworth is similar to England,
- Wandsworth's latest rate was 17.2 per 100 (15th) lowest in London
- Child deprivation is geographically concentrated in Roehampton and Putney Heath (West Wandsworth), Queenstown, St Mary's Park, Latchmere (North East), and to a lesser extent in Southfields (Central), Tooting, Graveney and Furzedown (South)



Infant Mortality Rate

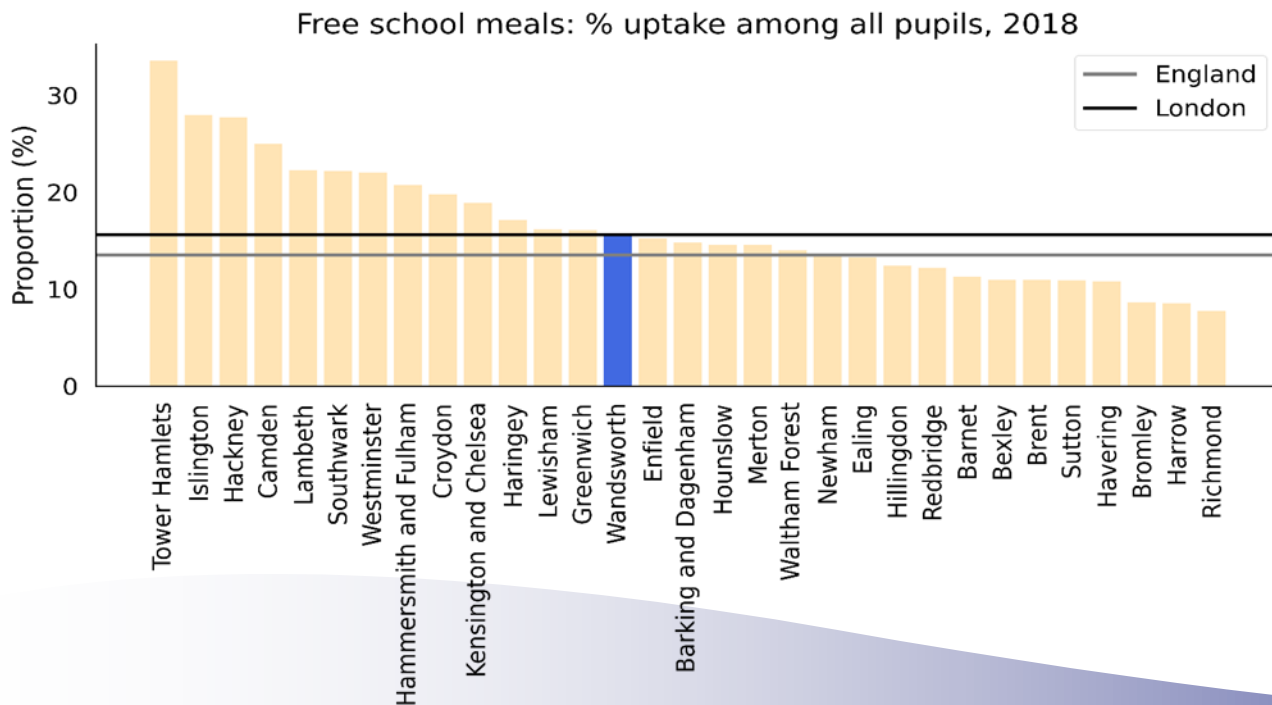
- Comparing local indicators with England averages, the health and well-being of children in Wandsworth is better than England. The infant mortality rate is better than England, but an average of 11 infants die before the age of 1 each year. Child mortality rate shows that on average there are 6 six child deaths (under 18 years) a year.



Receipt of Free School Meals

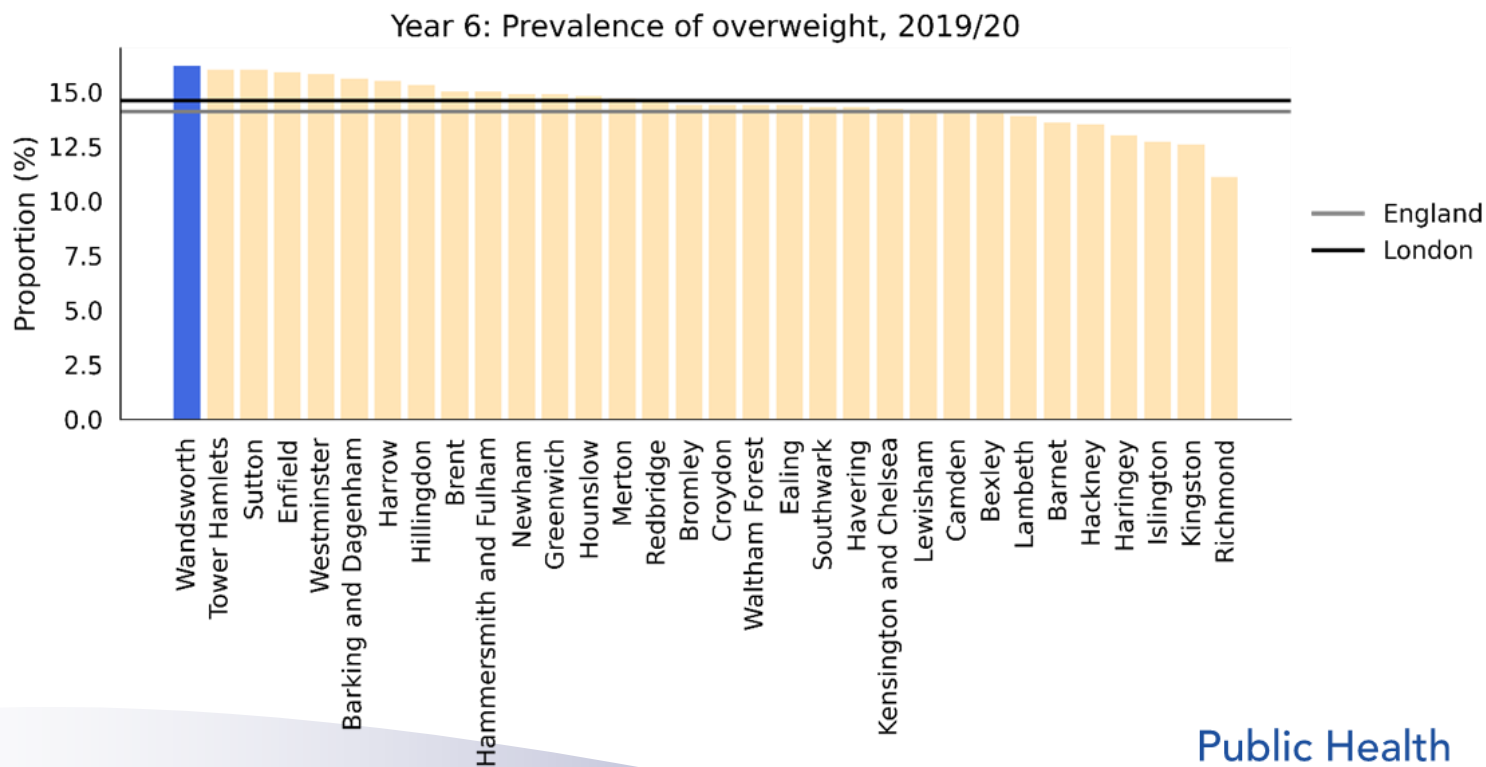
The number of children known to be eligible for FSM is frequently used as an indicator of poverty.

- In Wandsworth, 19.6% (6,761) of pupils, including those attending special schools, pupil referral units, and local authority alternative provision, were known to be eligible for and claiming FSM in January 2020. London 18.8% , England 17.3%.
- Decreasing trend since 2012 but started to increase over the last two years to 2020
- Of those attending state funded schools 25.9% (n=58) of nursery pupils, 19.2% (n=3,922) of primary school pupils, and 18.5% (n=2,400) of secondary school pupils were eligible for and claiming FSM.
- A much higher proportion of state-funded nursery school pupils claim FSM locally (25.9%) compared to London (10.1%), and England (6.7%) .



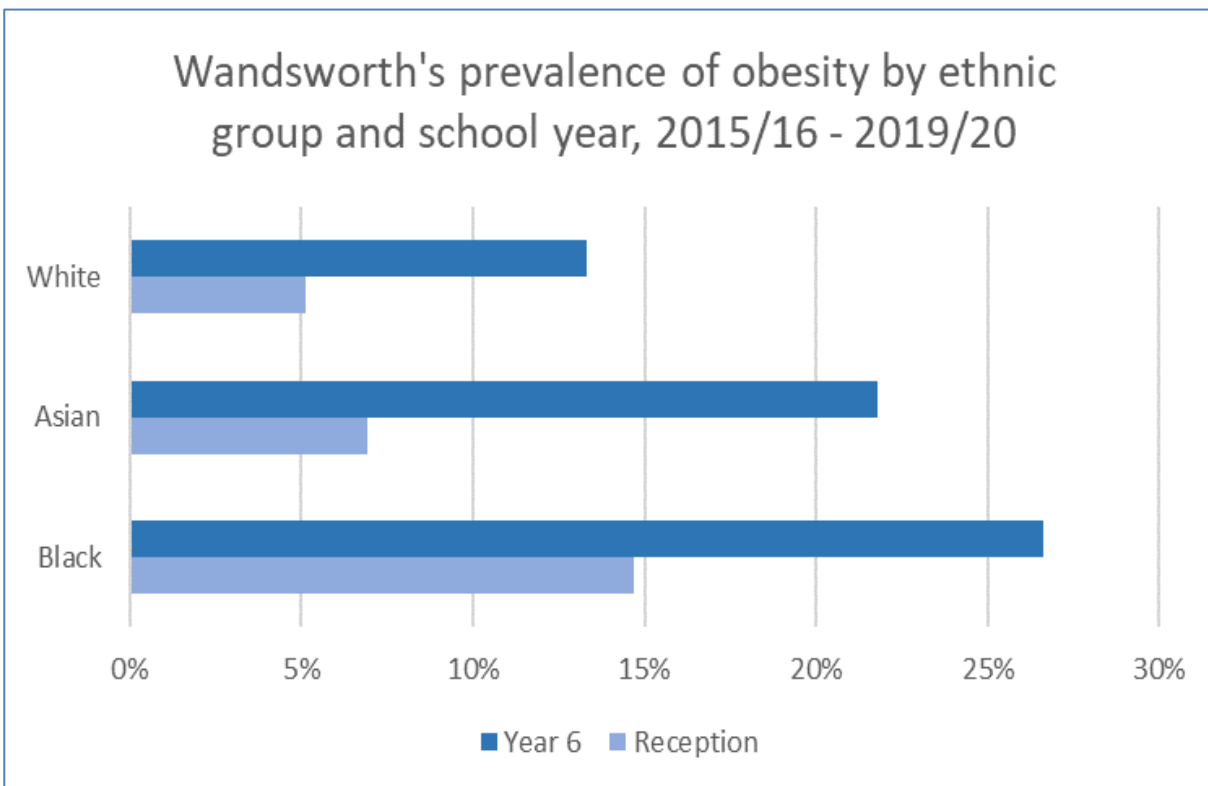
Childhood Obesity

- The prevalence of obesity (including severe obesity) in Wandsworth at reception has fallen over the last 10 years from 10% at its highest in 2011/12 to 6% in 2018/19 and is now below both the London and England proportions
- By the time a child reaches year 6, the percentage of children classified as obese has increased three-fold in 2019/20
- The proportion of overweight children in Wandsworth is increasing more rapidly than elsewhere in London; nationally, there was a decrease.
- In 2019/20 Wandsworth's overweight proportion in Year 6 was 16.2% (highest in London)



Childhood Obesity by Ethnic Group

- Childhood obesity prevalence changes with age and ethnic group
- 25% of Year 6 children from Black ethnic groups are classified as obese (3 year average 19%)



Educational Attainment

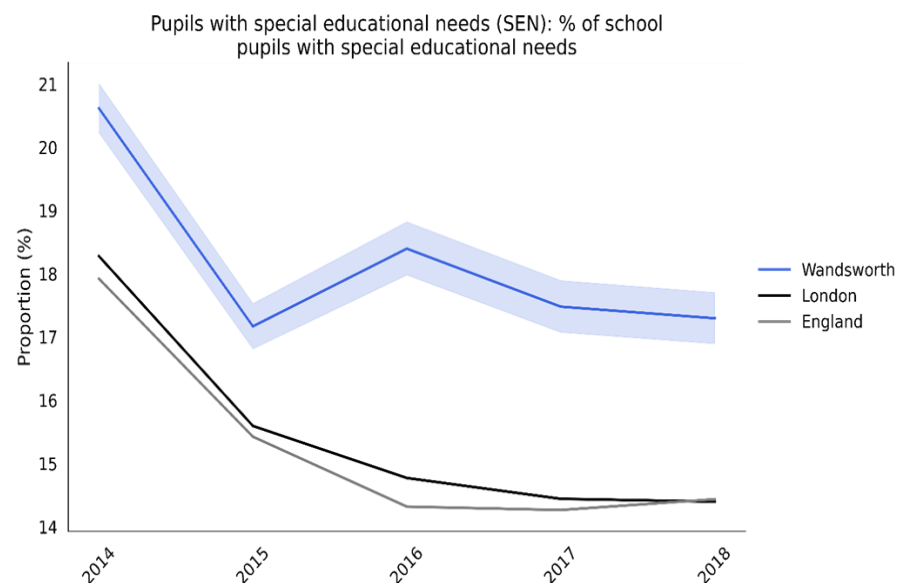
- Educational achievement overall in Wandsworth is better than average; however, the achievement of some groups is well below the average. For instance, 76% of children have reached a good level of development by the end of Reception, 7th best in London , the equivalent figure for children on free school meals is 60 - 6th worst in London
- Achievement in 2019 at Early Years Foundation Stage for those from Black, Asian and Mixed Ethnic backgrounds was lower than the borough average of 76%
- The Black ethnic group had the lowest level of attainment, 10% below the borough average, achievement for this group was also below the national average for this cohort: 66% compared to 68% nationally, whereas other groups were above the equivalent national average
- Locally, the rate of pupil absence is lower than in London and England

Education, Employment and Attainment

- In 2018, 50,000 of the adult population in Wandsworth, had completed full time education by the time they were 17-19-year olds, which was a 22% increase from the previous year's figure of 41,000
- After KS4, the percentage of pupils that stay on in a school 6th form is very high at 72.4%. This compares to a national average of 37.6% and is the 2nd highest proportion nationally. However, the flip side of this is that the percentage that go to college or into an apprenticeship is amongst the lowest in the country
- 50% of Wandsworth care leavers aged 19-21 were in education employment or training in 2018-19, this was slightly lower than the averages for England (52%) and London (54%)
- In 2019/20 the proportion of people aged 16-17 who are classified as Not in Education, Employment or Training or Unknown (NEET) was 10%, which is significantly higher than London and England and continues to worsen.

Special Educational Needs

- Locally, the proportion of pupils with SEN support in Wandsworth schools has remained around 13% of the school population and the borough continues to be higher than the London and England rates
- Wandsworth is the 4th highest borough nationally where pupils with SEN are attending Wandsworth schools but live in other local authorities (34%)
- The total number of children and young people with a statement or Education and Health Care Plan (EHCP) resident in Wandsworth is 2,418 at January 2020.. Wandsworth shows the 2nd highest increase in EHCPs amongst statistical neighbours between 2016 and 2020
- 72% of children and young people in the borough with EHCPs are male and 30% are Special Educational Needs.
- 70% with EHCPs are from a Black, Asian or Minority Ethnic background, with the largest minority group being 'Black or Black British', accounting for 26% of children and young people with EHCPs
- A large number of out of borough residents are accessing services due to the high level of provision in Wandsworth



Sensory and Physical Needs

- Despite data suggesting decreasing prevalence in sensory and physical needs in the UK, it remains notable in Wandsworth
- Wandsworth has the highest proportion compared to statistical neighbours of pupils with hearing impairments (3.1% compared to 1.8% nationally), visual impairments (2.3% compared to 1.0% nationally) and multi-sensory impairments (0.6% compared to 0.3% nationally)

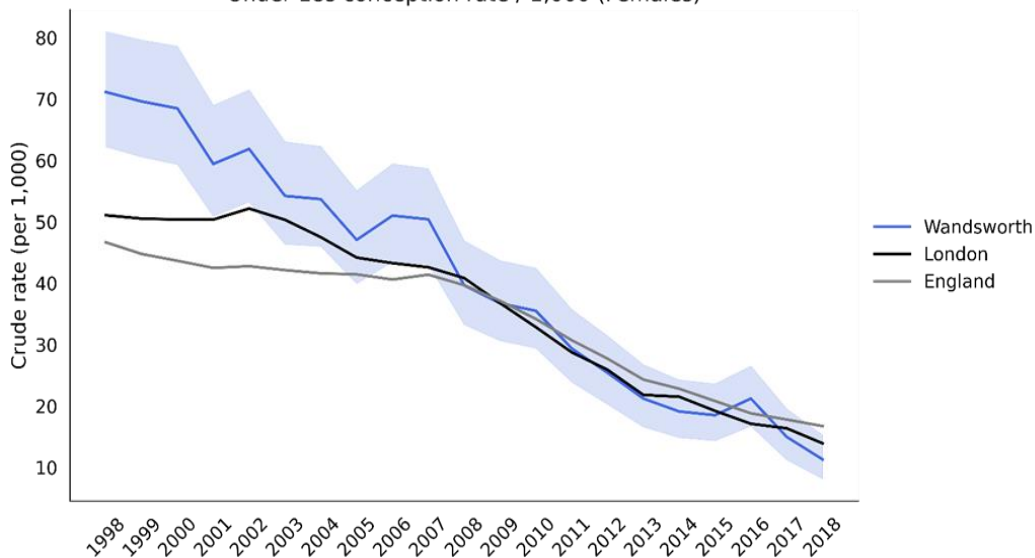
Hospital Admissions for Long Term Conditions in Children

- In 2018/19 Wandsworth's hospitalisation rate for young children with lower respiratory infections was 46.7 per 10,000 (3rd highest in London)
- Wandsworth's latest rate of diabetes admissions in under 19s was 45.2 per 100,000 (8th highest in London) lower than England and higher than London
- In 2018/19 Wandsworth's asthma-related hospitalisation rate for children aged under 10 was 156.7 per 100,000 (8th lowest in London)
- In 2018/19 Wandsworth's hospitalisations for epilepsy in children under 10 was 60.3 per 100,000 (11th lowest in London)

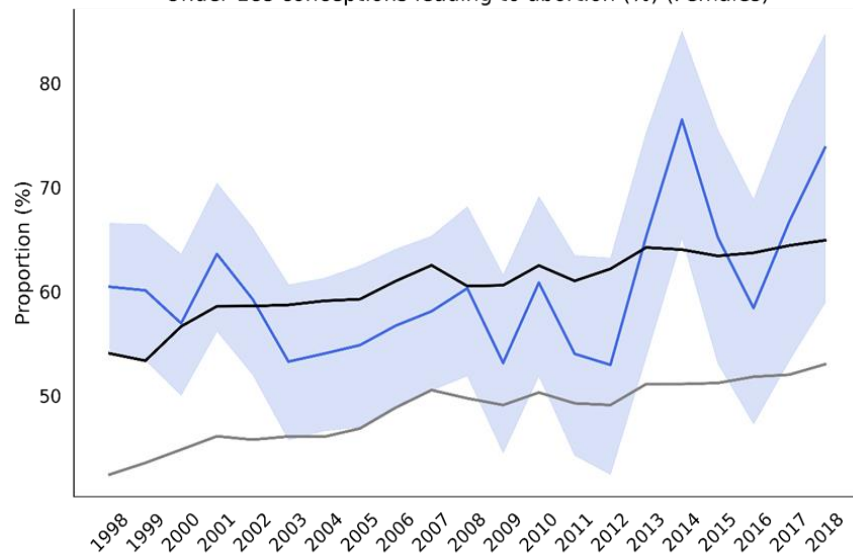
Teenage Pregnancy

- The rate of under-18 conceptions in Wandsworth have seen a substantial reduction over the last decade and have fallen more steeply than those seen at an England level
- In 2018 74% of under 18 conceptions in Wandsworth led to abortion (8th highest proportion in London), which is higher than the London average

Under 18s conception rate / 1,000 (Females)

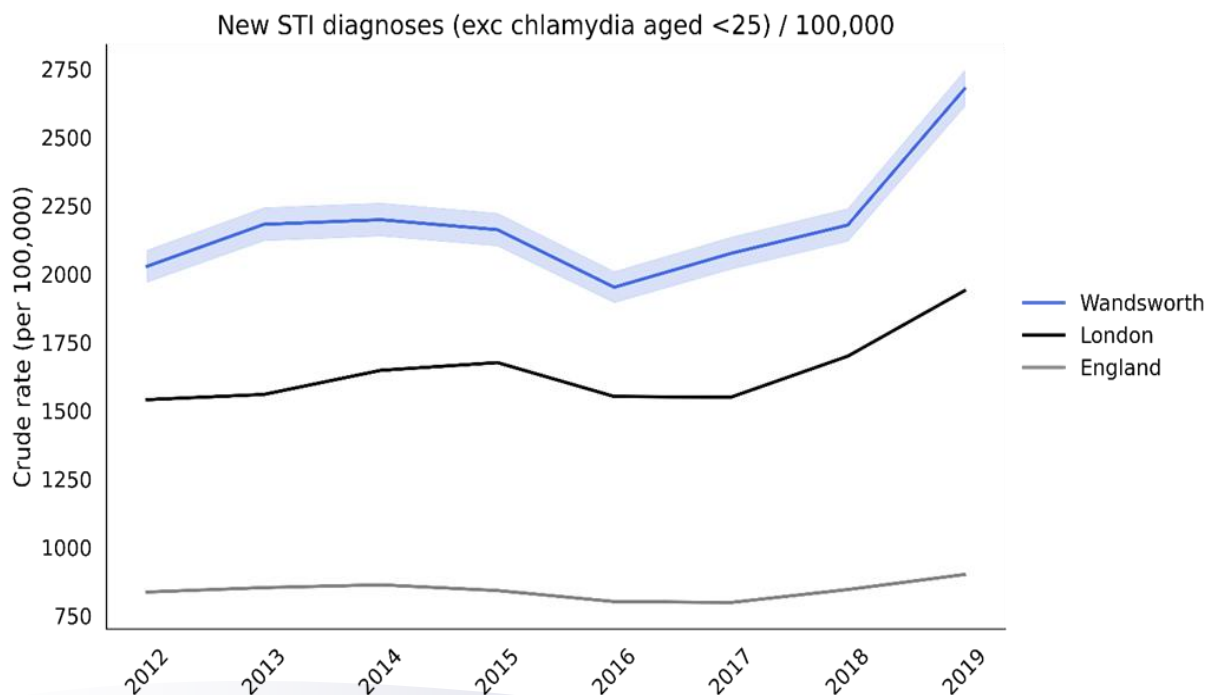


Under 18s conceptions leading to abortion (%) (Females)



Sexual Health

- Chlamydia detection rate was 3,941 per 100,000 (5th highest in London)
- Wandsworth's rate of STIs other than chlamydia, was 2,677 per 100,000 young people aged 15-64 (7th highest in London) and shows an increasing trend
- High rates of unsafe/unprotected sex

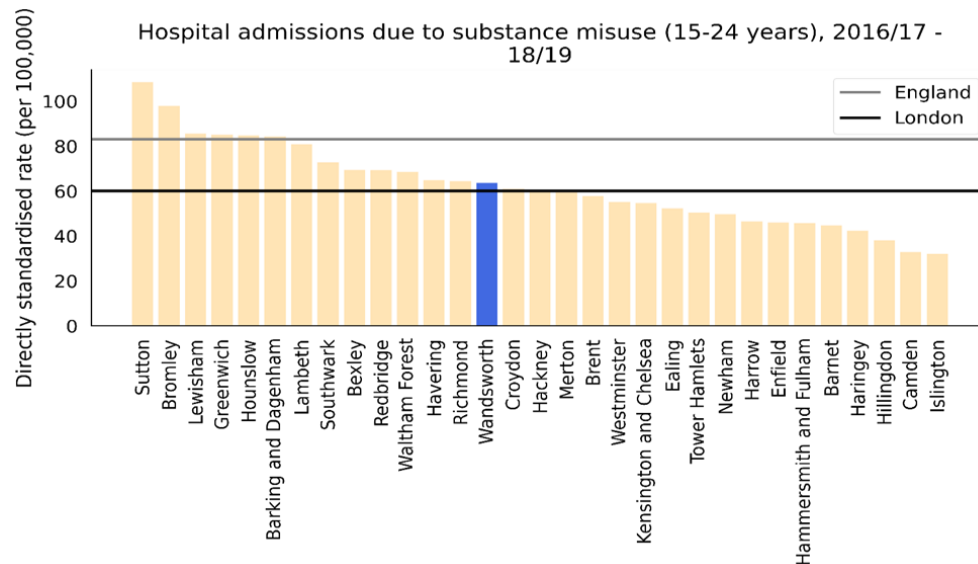
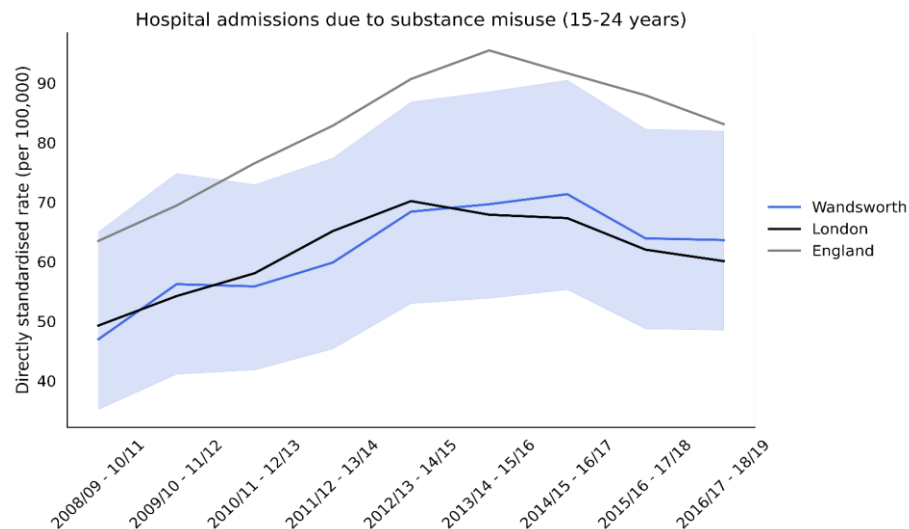


Mental Health and Well-being

- Wandsworth's latest (2020) proportion of secondary school pupils with substantial emotional, social and mental health needs was 4 per 100 children (2nd highest in London)
- The borough's proportion of children with mental health needs in secondary schools was also 51% higher than in the primary schools; the equivalent difference for England was just 16%
- In 2018/19 Wandsworth's rate of hospital admissions for self-harm in children and young people aged 10 to 24 was 231 per 100,000 (7th highest in London). For the first time in 5 years the rate for the borough has decreased.
- The single largest reason that young people are referred into Wandsworth's NHS Child and Adolescent Mental Health Service (CAMHS) Single Point of Access (SPA) is concerning behaviour followed by anxiety and low mod.

Hospitalisation of Children and Young People due to Substance Misuse

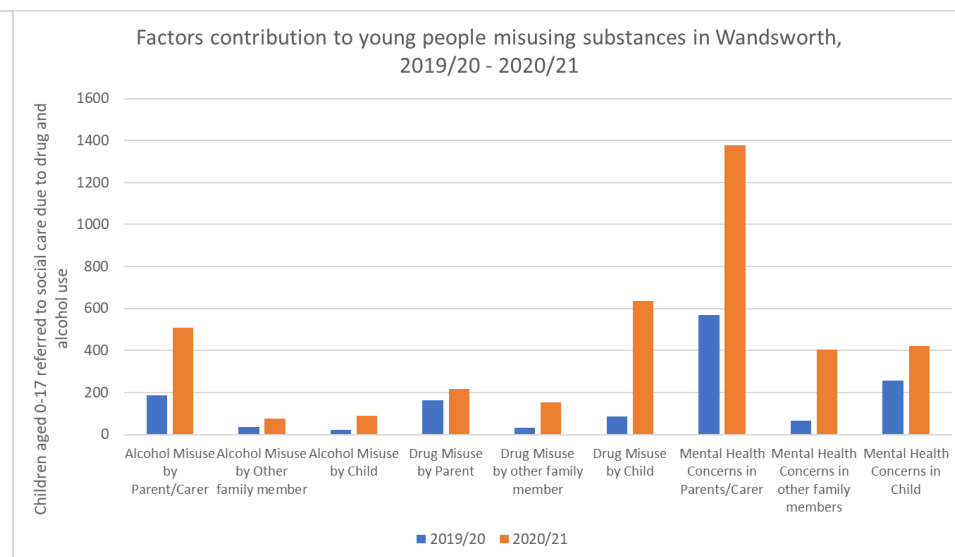
- Wandsworth hospital admissions for substance misuse amongst 15- to 24 year was 63.6 per 100,000 population, 14th highest in London, 23.4% lower than the England average and 5.9% higher than the London average. The latest borough figure was 35.5% higher from year 2008/09–10/11, in comparison with a 30.9% increase in England's rate in the equivalent time period.
- Wandsworth's rate has been decreasing for the last two reporting periods, which is in line with the trend for London and England.



*. blue ribbon shows 95% confidence interval around Wandsworth's indicator values
 Source: PHE Public Health Outcomes Framework

Children and Young People Substance Misuse Treatment Data

- Wandsworth’s substance misuse specialist services’ data highlights a marked decrease in young people accessing specialist substance misuse interventions over the last five years. The numbers in treatment had significantly gone down in 2020/21, due to limited interaction with young people during the COVID-19 pandemic. Numbers in treatment going down in 2019/20 and before can be attributed to a number of factors such as capturing data and categorisation, reduced number of referrals, and young people having difficulty seeking help in school settings.
- The main factor contributing to young people misusing substances is mental health concerns in parents/carers



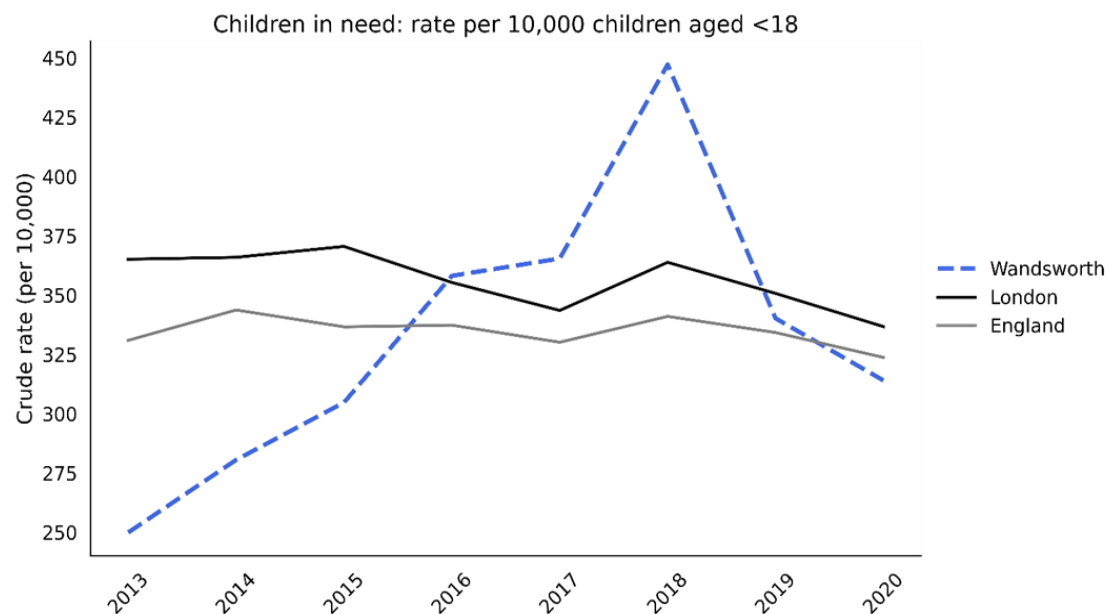
START WELL: Children looked after

Public Health



Children in Care

- At the end of March 2020, 277 children and young people were looked after by the authority, of 43 per 10,000 of the population (14th lowest in London); the rate fell in 2020.
- Wandsworth has a disproportionate number of children who are looked after that are from black and minority ethnic (BAME) backgrounds at 40% (increased from 35% to 40% over the last five year) compared to the statistical neighbour average of 30%, London average of 29% and the national average of just 8%
- High proportion of looked after children who are male, aged 16 and over, from Black ethnic background that were accommodated voluntarily under section 20
- In Wandsworth, in March 2020, the largest ethnic group of children looked after was Black or Black British; when compared to the population of school pupils from Black ethnic backgrounds (21%) this was a significant over-representation, more pronounced than in London and England
- Wandsworth's latest proportion of children who had 3 or more placements in 12 months preceding 31 March 2020 was 12 per 100 (4th highest proportion in London)



LIVE WELL: Indicators of Health and Wellbeing

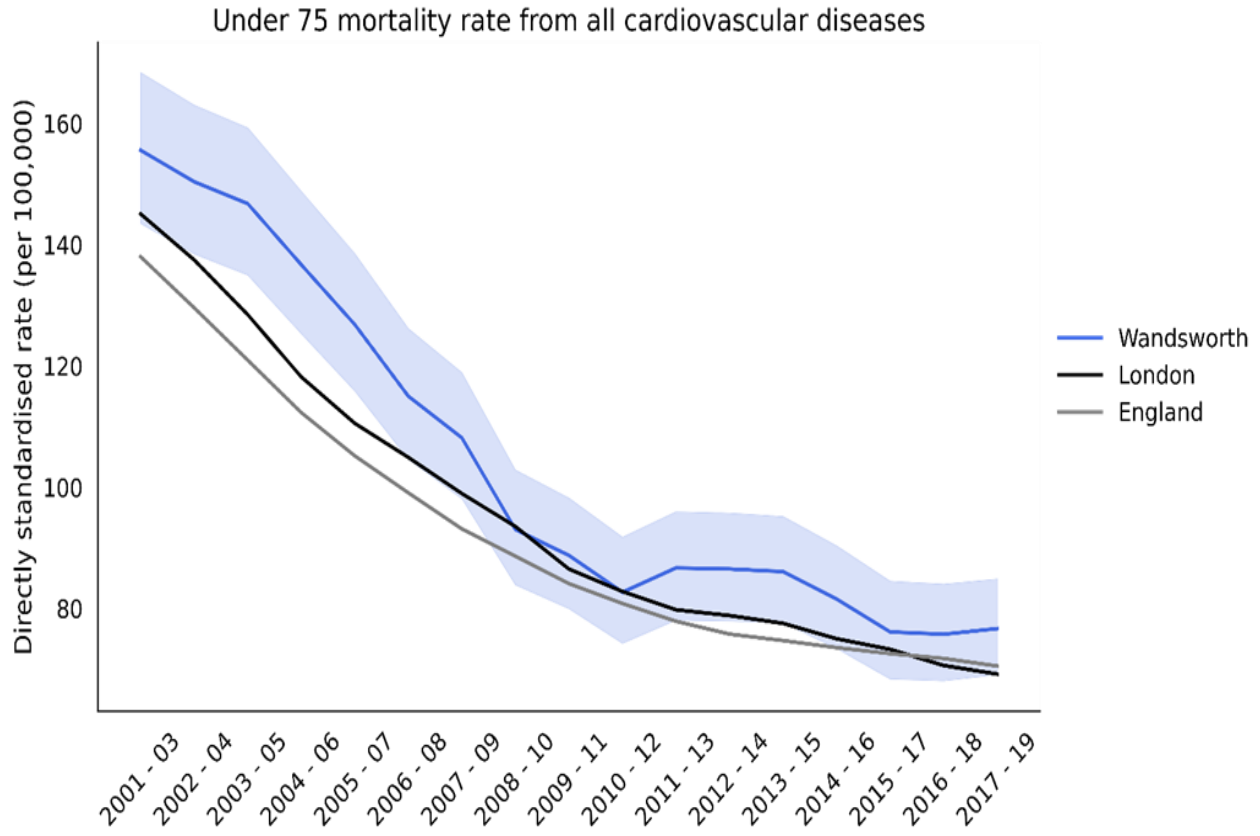
Public Health



Premature Mortality

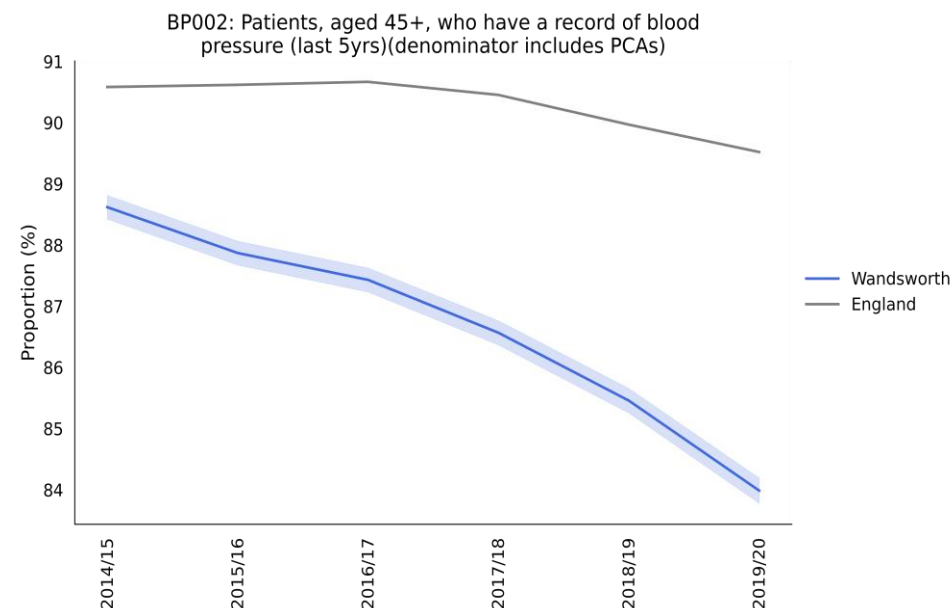
- Largest contributors to premature mortality were cardiovascular disease, cancer and respiratory disease
- Premature mortality rates from cardiovascular and from cancer plateaued since 2014-16 in contrast to the ongoing reductions in London and England between 2014 and 2019

Cardiovascular – premature mortality



Cardiovascular

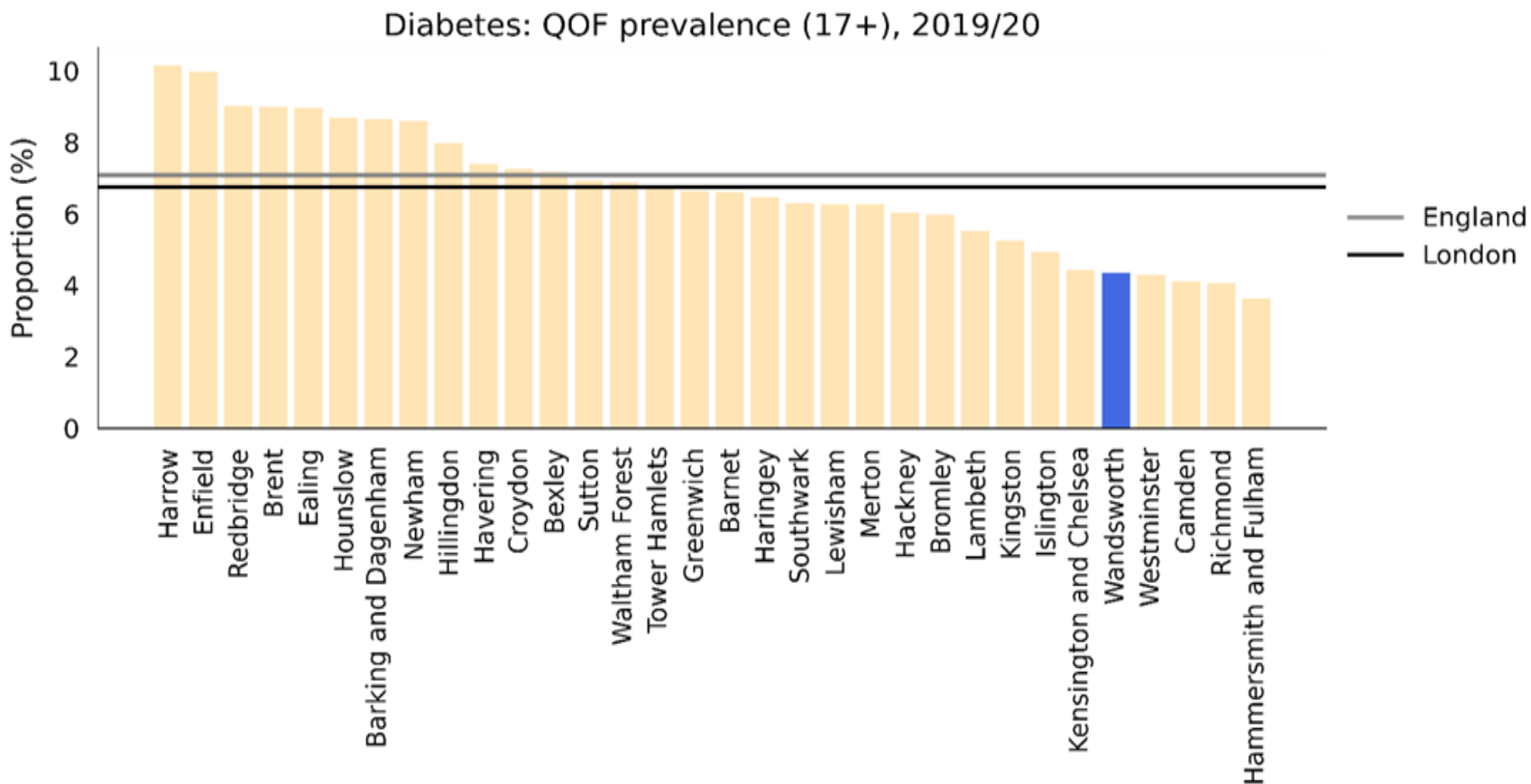
- Stroke and CHD admissions and mortality rates are low and decreasing
- Premature mortality rates from cardiovascular plateaued since 2014-16
- Taking into account the picture of low and decreasing detection of hypertension, diabetes and AF, varying management of high blood pressure and the increases in prevalence in other areas, warrants further investigation as we address long term conditions.
- Risk factors associated with cardiovascular disease are smoking, hypertension and blood pressure.
- In 2019/20, Wandsworth's GP recorded prevalence of hypertension was 8.1% (n=33240).
- Data from SWL CCG indicates that Wandsworth detects 70% of its expected patients with hypertension. The London ambition is 80%.
- 103,368 (84%) patients aged over 45 years had a blood pressure recording in the preceding 5 years in 2019/20 and it is showing a declining trend.
- In 2019/20 Wandsworth's proportion of hypertensive patients aged under 80 that had their blood pressure measurements within the agreed limits of less than 140/90 was 65.7% (n=18288), the 4th lowest rate in London.



Cardiovascular

- In 2019/20, the proportion of CHD patients in Wandsworth that were recorded as regularly taking recommended aspirin, or equivalent, was 91.4%, the 12th highest rate in London which was 0.6% higher than England average. The uptake of aspirin or equivalent drugs among Wandsworth's CHD patients has been slowly declining since 2014/15
- Premature mortality rates from stroke has been falling (latest data 2016-18).
- In 2019/20 Wandsworth's proportion of Stroke patients aged under 80 with last blood pressure measurement within the agreed standards was 72.3 (n=1717) this is the 2nd lowest rate in London.
- Wandsworth has a lower detection rate for AF than the London average.
- Wandsworth's latest abdominal aortic aneurysm (AAA) coverage in people aged 60 - 74 was 39.9/100 which is the lowest rate in London.

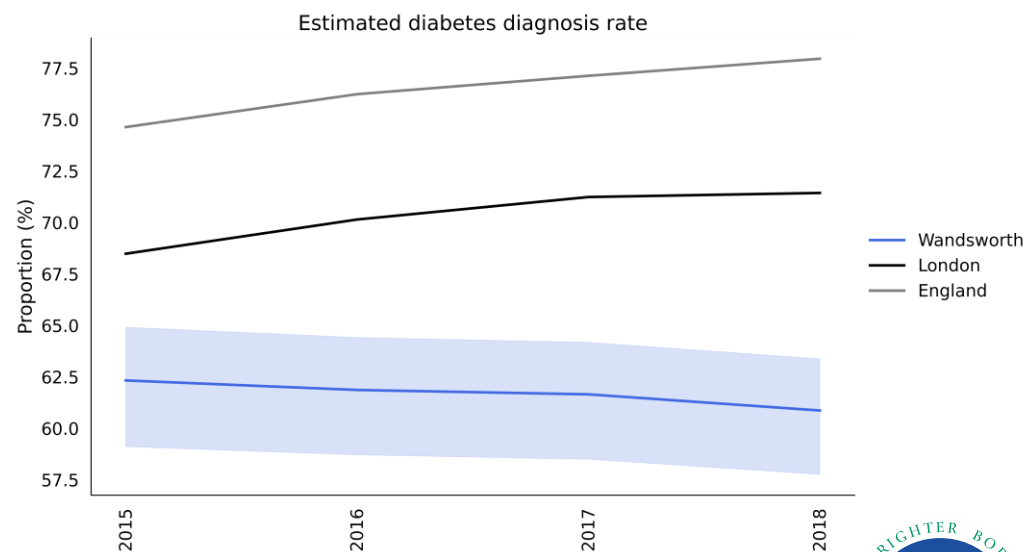
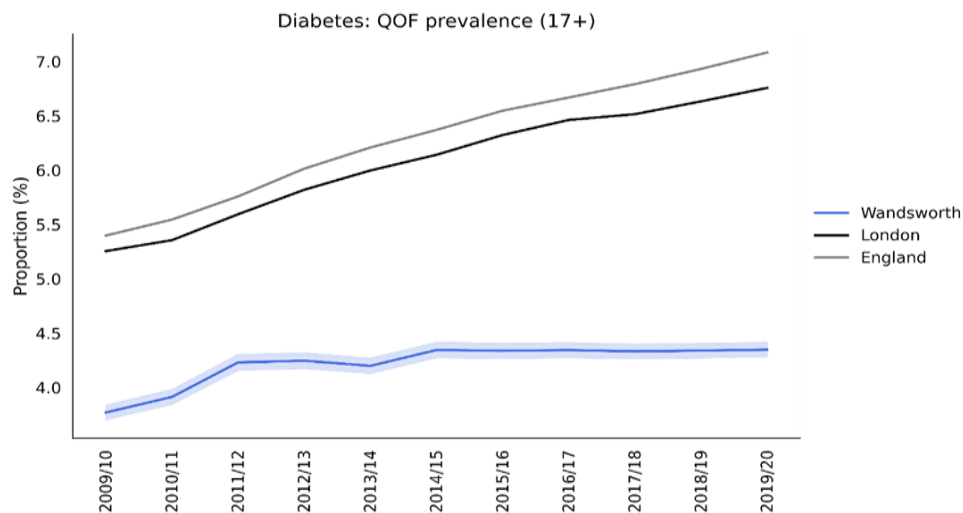
Diabetes



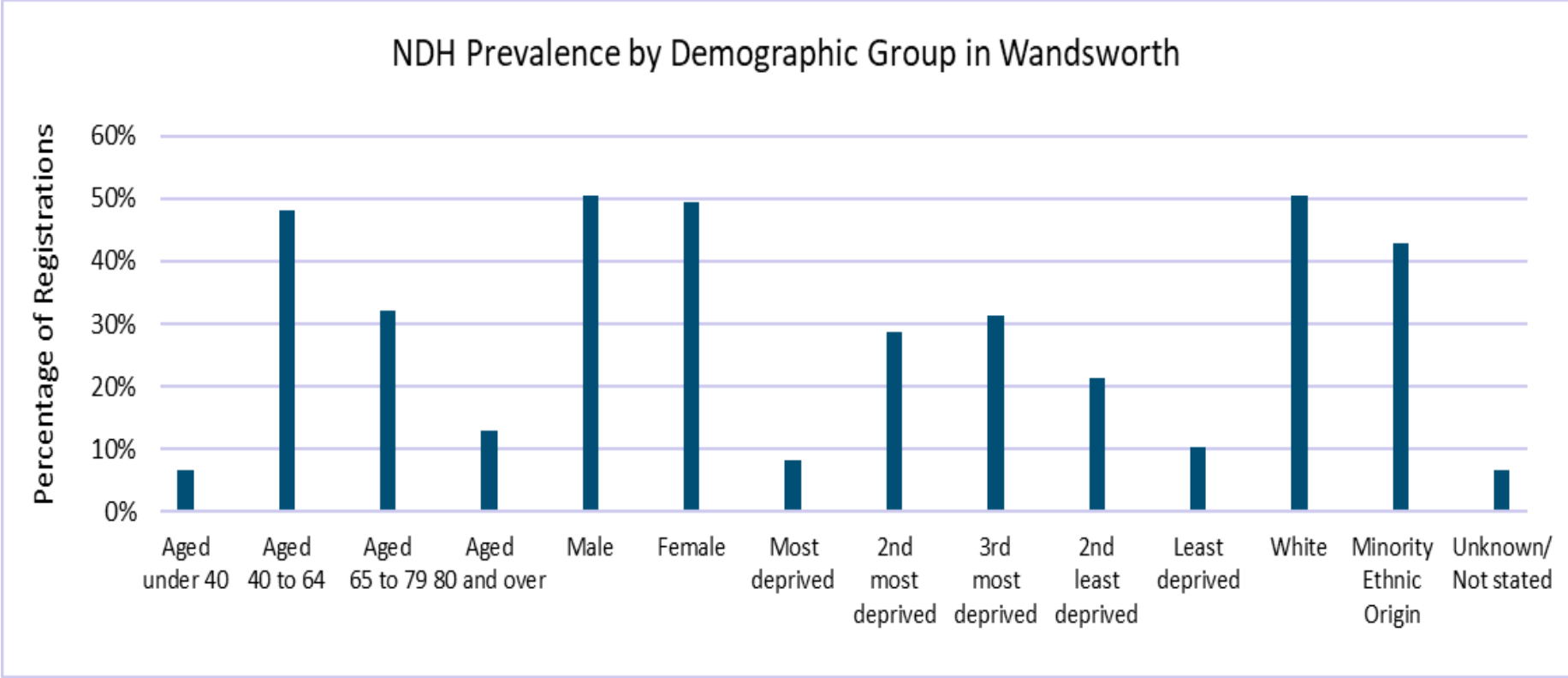
In 2019/20, Wandsworth's prevalence of Type 2 Diabetes was 4.3% (n=14,839 , 5th lowest rate in London and England . Wandsworth has seen a lower rise in Diabetes prevalence rate since 2014/15, whilst London and England prevalence has continued to rise.

Diabetes

- At individual GP practice level, the prevalence of diagnosed Diabetes ranges from around 1% to 12%.
- Wandsworth has seen a lower rise in Diabetes prevalence rate since 2014/15, whilst London and England prevalence has continued to rise.
- In 2018/19, Wandsworth's proportion of people diagnosed with type 2 diabetes who received all 8 care processes was 72.6% (n=9370), which is the 4th highest rate in London, 33.7% higher than the England average. The latest borough's figure continues to increase.
- In 2018, in Wandsworth 61% of the expected patients with diabetes have been detected, which is the 7th lowest rate in London.

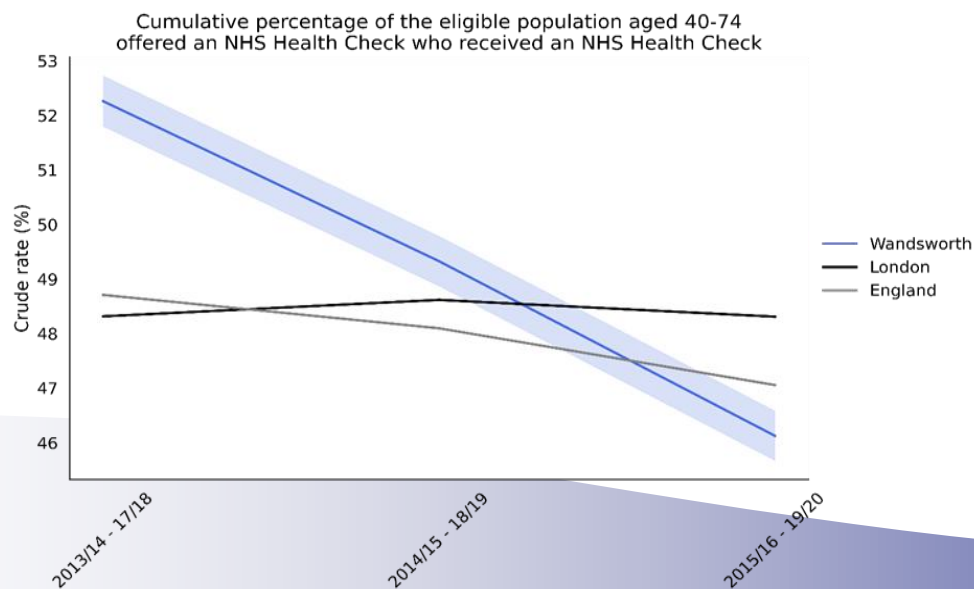


Diabetes



NHS Health Checks

- During 2019/20, Wandsworth exceeded its annual target to offer (invite) 20% of the eligible population for an NHS Health Check; 16,279 patients were invited and 6,733 eligible Wandsworth residents received a Health Check
- 32.8% of service users were BAME, less when compared to the borough population for age range (34.7%). And 3.9% were registered to addresses in the 20% most deprived areas of the Borough whereas the borough profile is 4.5%. In addition, 17% of patients were not residents of the Borough, but registered with a Wandsworth GP
- This suggests that work to target invitations could be strengthened to reduce health inequalities



Public Health



NHS Health Checks Outcomes

From the 6,733 patients who received a Health Check, outcomes included:

- 22 residents were identified with a high QRISK score (>20%)
- 243 residents were identified as having high blood pressure
- 232 residents were diagnosed Hypertensive
- 5 patients diagnosed with stage 3 Chronic Kidney Disease (CKD) with patient identified as stage 5 CKD
- 3,747 patients were classified as obese (BMI > 30kgm²)
- 808 were identified with a Q-Diabetes score greater than 5.6%
- 98 residents were diagnosed Type 2 Diabetic

Referrals from an NHS Health Check to Lifestyle Support Services during 2019/20 included:

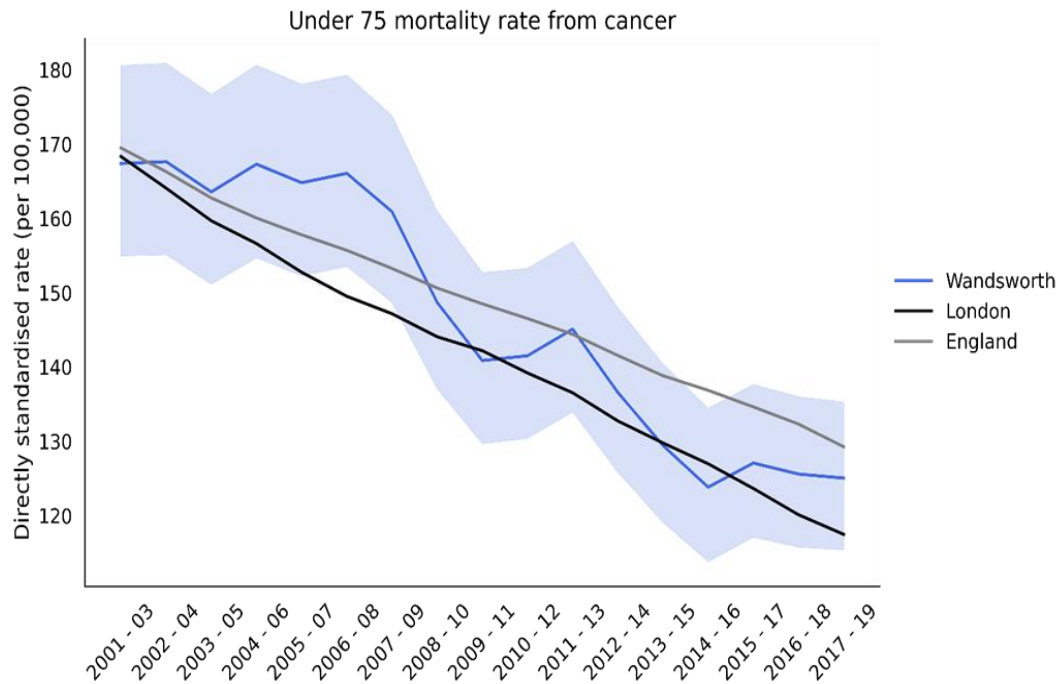
- 57 patients were referred to the National Diabetes Prevention Programme (NDPP); 19 (25%) declined
- 192 people were referred to the Exercise on Referral Programme; 221 (54%) declined
- 113 patients were referred to Weight Management Programme; 126 (53%) declined
- 93 patients were referred to Smoking Cessation Services; 53 (36%) patients declined

NHS Health Checks – identifying people with diabetes

- In 2019/20, Wandsworth completed 6602 NHS Health Checks; blood test results show that 58 of these people had an HbA1c result in the diabetic range. Nationally, it is estimated that NHS Health Checks could prevent 4,000 people a year from developing Diabetes and for every 80 – 200 NHS Health Checks, 1 person is diagnosed with Type 2 Diabetes (1.25% - 0.5% of checks). Wandsworth was within this range with 0.87% of checks resulting with a Diabetes diagnosis. Targeted NHS Health Checks will further help to increase the proportion of people identified with NDH as well as people living with Diabetes
- In 2019/20, 75% of people having an NHS Health Check had an HbA1c result recorded, and of these, 6.6% had an HbA1c reading in the NDH range (5% of all NHS Health Checks). Thirty percent of people had a QDiabetes score greater than 5.6, indicating they are at high risk of Type 2 Diabetes, yet 23% of people within this group did not have an HbA1c result recorded. A further 5% of people did not have a QDiabetes or HbA1c result recorded. This shows missed opportunities for NDH identification and early intervention 2019-20 Wandsworth NHS Health Checks data, Public Health Primary Care Team

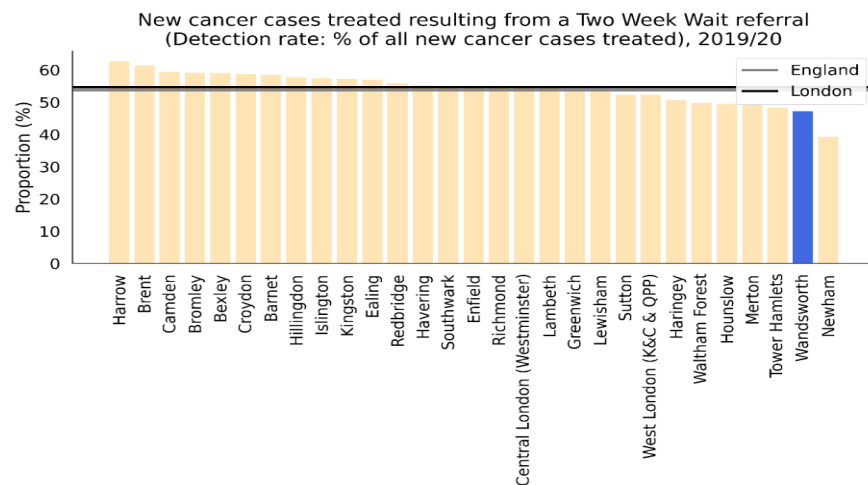
Cancer – premature mortality

- In 2017 - 19, Wandsworth's **rate of mortality from lung cancer** was 54.4 per 100,000 (n=270), which is the 11th highest rate in London, higher than England and London. Mortality rates in Wandsworth males was higher compared to females.

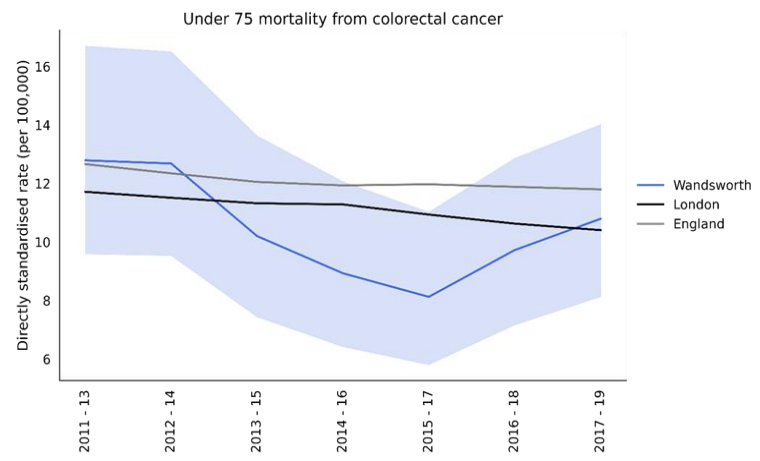
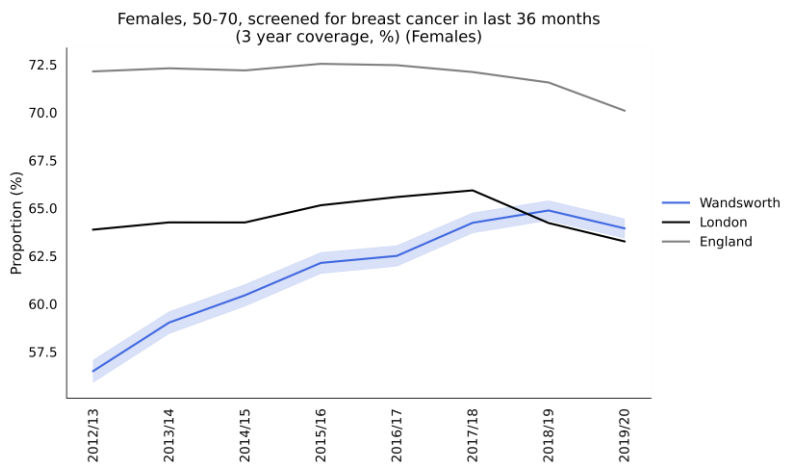
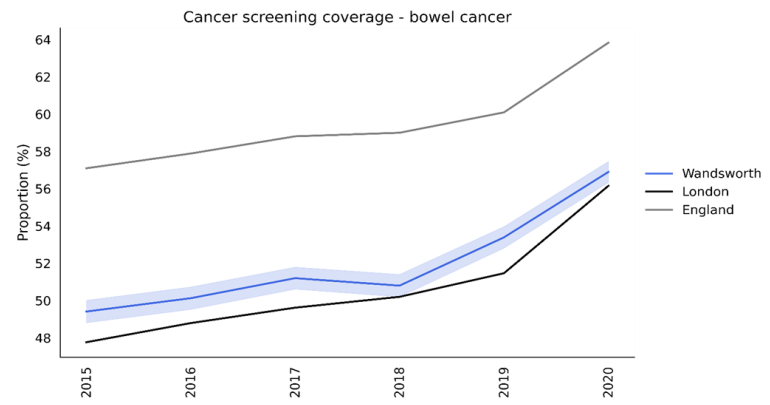
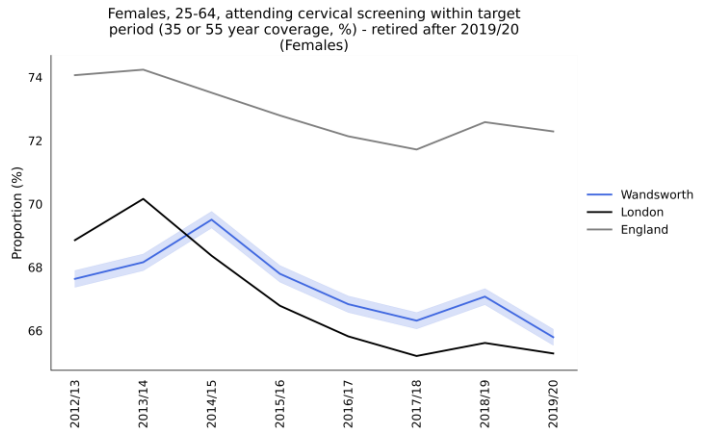


Cancer

- Wandsworth’s Two Week Wait referral data shows that local primary care services are referring substantially fewer people with suspected cancer than the London and England average referral rates. For those that are being referred, the conversion rates of these referrals are among the lowest in London – all of which results in the 2nd lowest in London proportion of detected cancers via Two Week Wait route
- In 2019/20, Wandsworth's rate of emergency cancer presentations (cancers diagnosed in hospital following an emergency admission) was 40.2/100,000 (n=168) this is the lowest rate in London
- The 2019/20 rate of non-emergency cancer presentations for Wandsworth was 221/100,000, which means that 15.4% of cancer presentations were identified during emergency hospital stay; the equivalent percentages for England and London were higher, at 17.8% and 18.4% respectively
- In 2019/20, Wandsworth's percentage of cancer detections that are attributable to Two Week Wait referrals was 47.2, the 2nd lowest rate in London and a higher rate of drop in activity



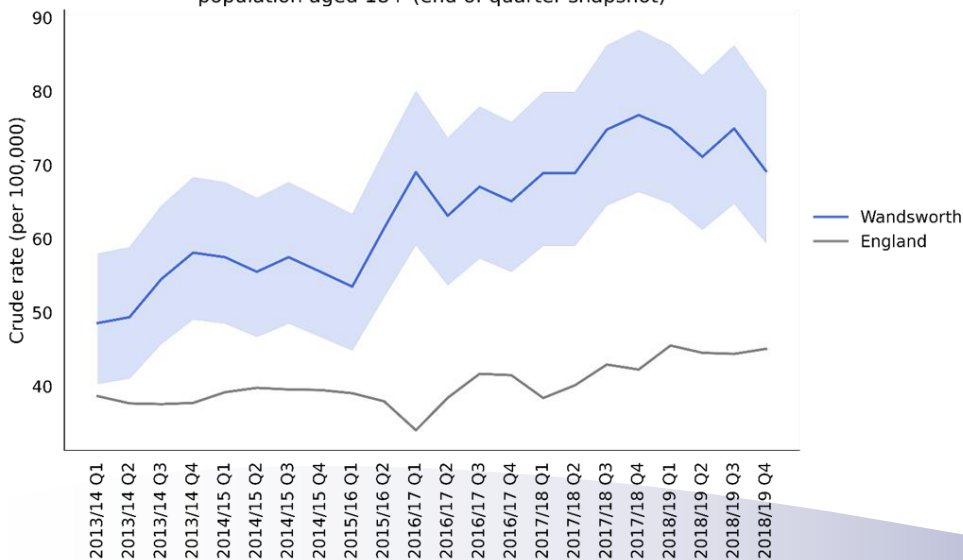
Cancer screening



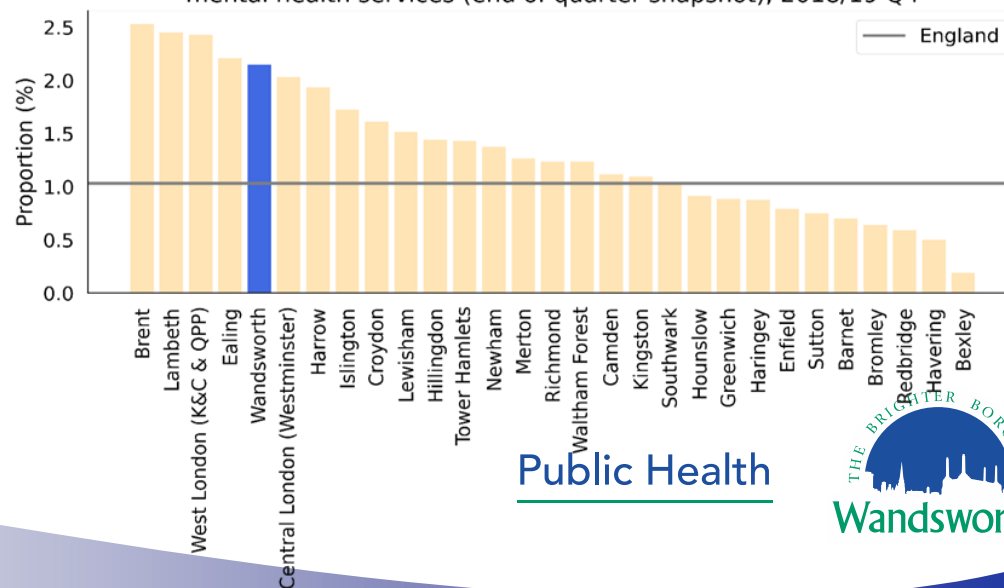
Mental Health

- In 2018/19 Q4, Wandsworth's rate of people aged 18+ detained under the Mental Health Act was 69.2 per 100,000 population (n=180) this is the 11th highest rate in London which is 53.6% higher than the England average and equal to the London average
- The latest Wandsworth's figure for 2018/19 Q4 was also 42.5% higher from the baseline year (2013/14 Q1), in comparison to 16.6% increase in England's rate in the equivalent time period
- Wandsworth's figures are consistently significantly above the England average; similar to the London average, the overall trend for the rate appears to be increasing

People subject to Mental Health Act: rate per 100,000 population aged 18+ (end of quarter snapshot)



Persons detained under MHA: proportion of people in contact with mental health services (end of quarter snapshot), 2018/19 Q4



Public Health



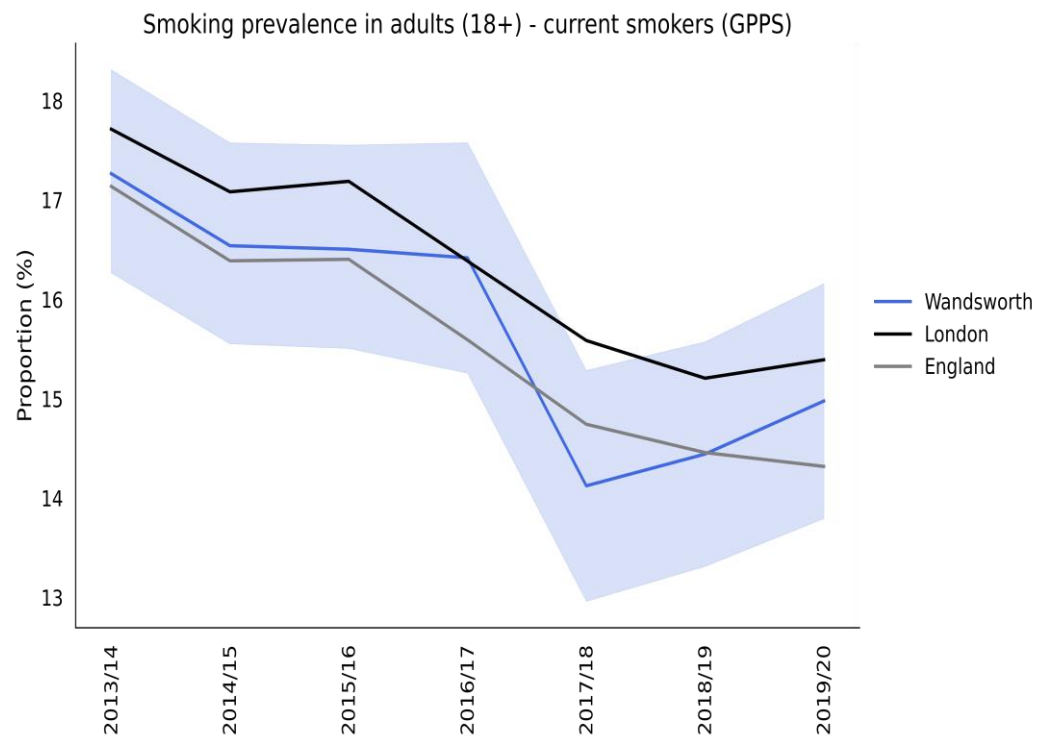
LIVE WELL: Healthy Behaviours and Lifestyle

Public Health



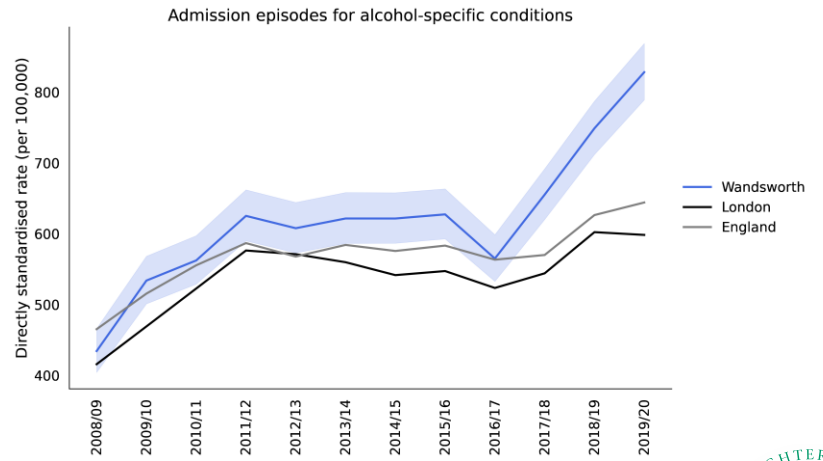
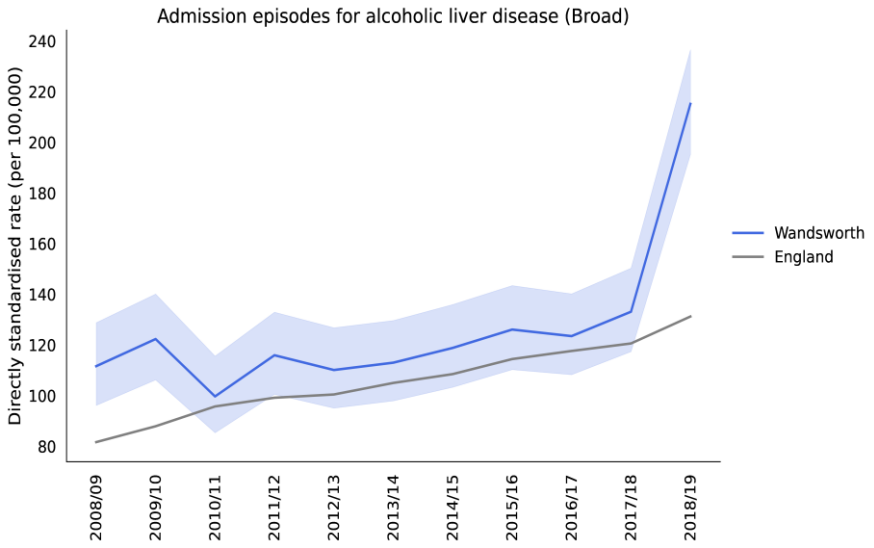
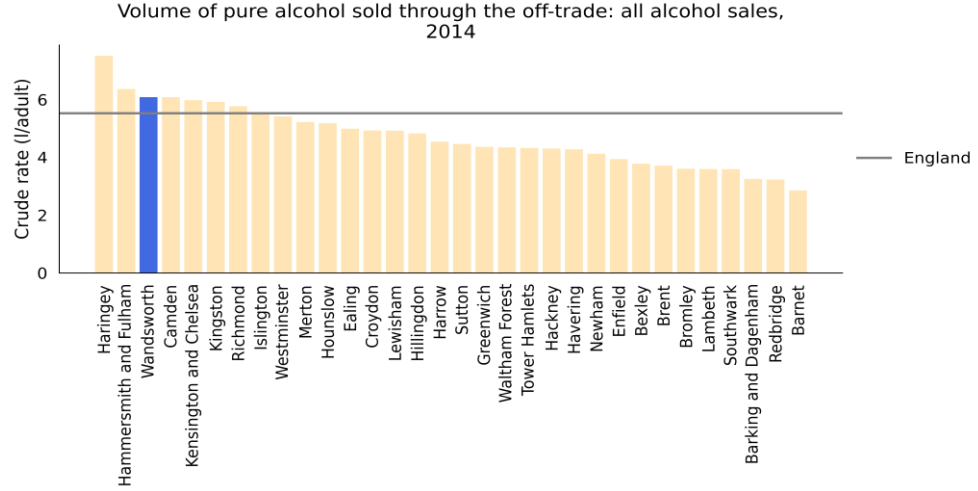
Behavioural and Metabolic Risk Factors - SMOKING

- In 2019/20, Wandsworth's smoking prevalence was 15.0%, 4.6% **higher** than the England average and **increasing** for the second year in a row
- There has been **minimal change** in prevalence of smoking in adults between 2015 and 2019 (13.7% to 13.5%) comparative to London (16.3% to 12.9%) and England (16.9% to 13.9%)
- Smoking attributable **deaths declined** from 755 in 2012-14 to 687 in 2016-18.
- Between 2017-18 there were over 1,500 smoking related hospital admissions at a cost of £3.8m.
- 112 women were smoking at time of delivery in 2018/19.



Behavioural and Metabolic Risk Factors – ALCOHOL

- 4 in 10 Wandsworth residents report that they drink over 14 units of alcohol per week – the **highest proportion** in any London borough.
- In 2018/19, Wandsworth's rate of admissions for alcoholic liver disease was 215.1 per 100,000 (n=456), which is the **2nd highest rate in London**

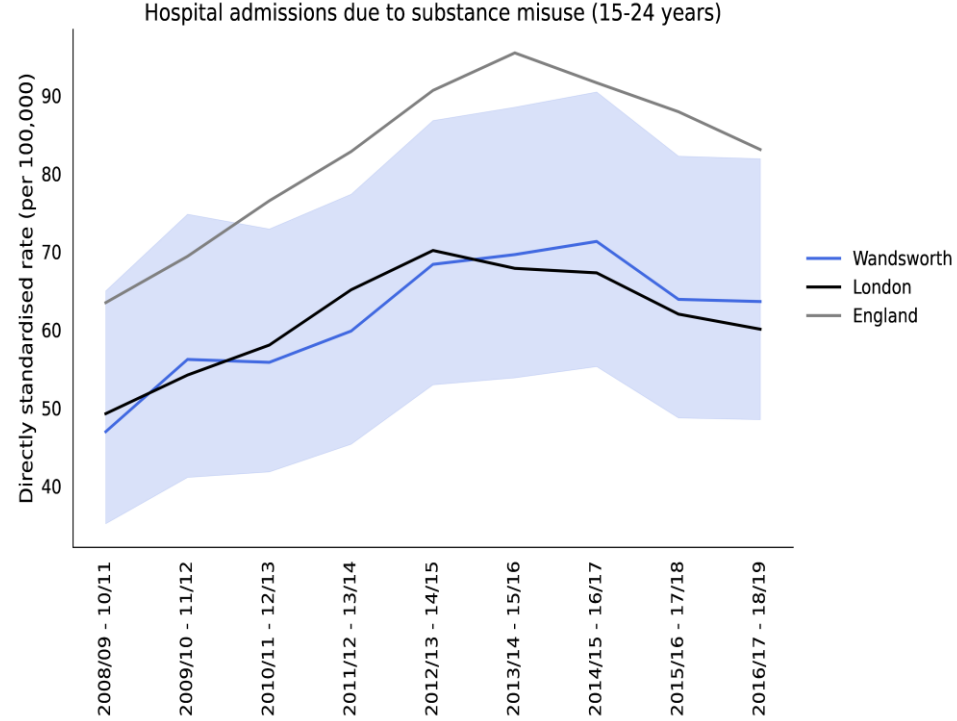
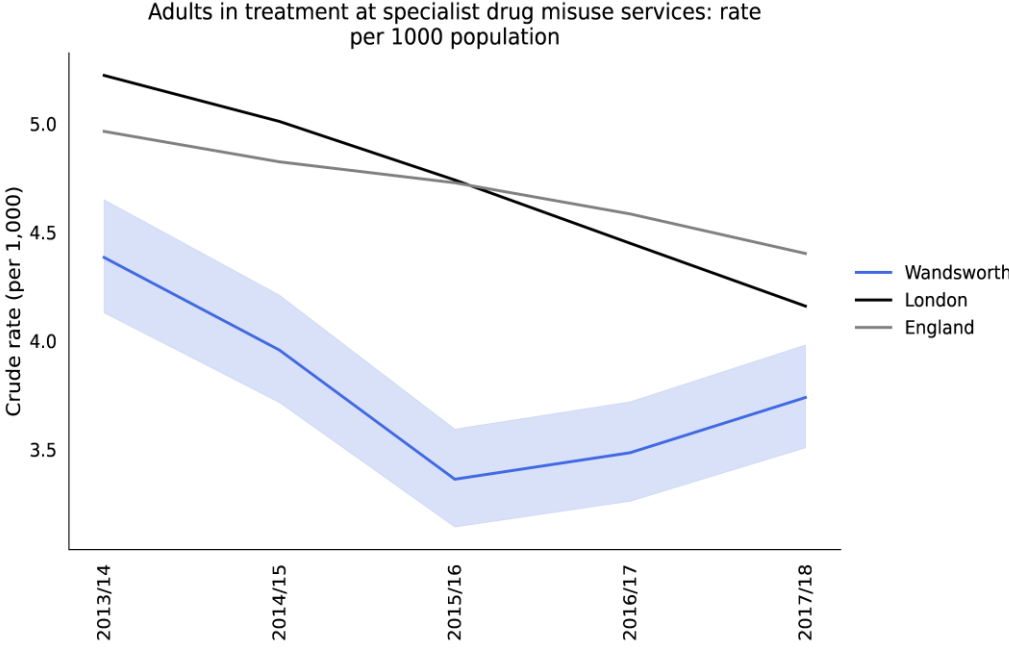


Public Health



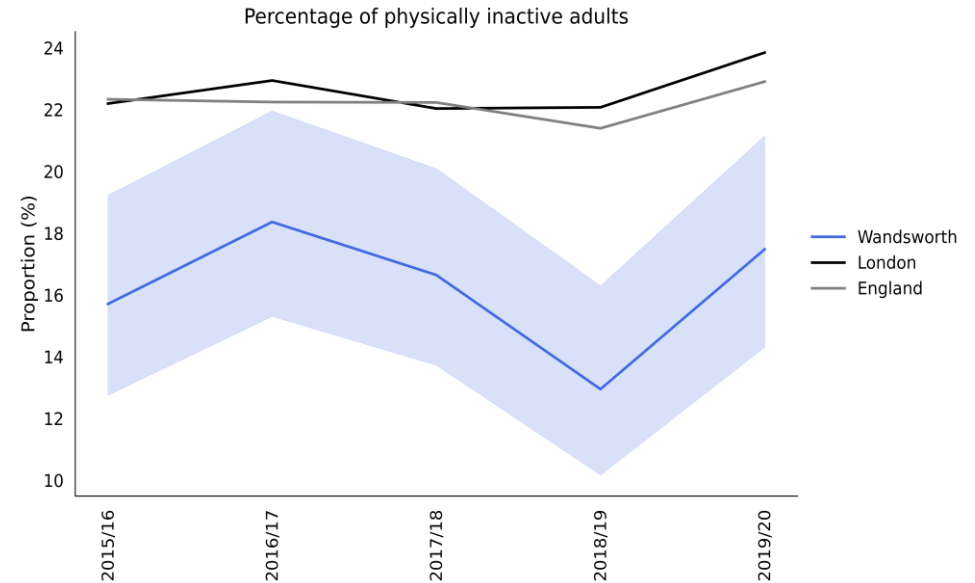
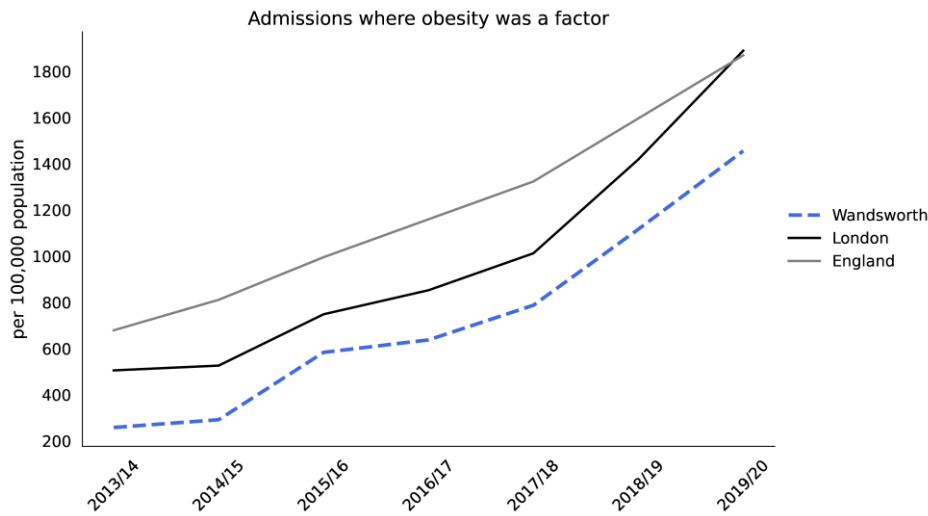
Behavioural and Metabolic Risk Factors – SUBSTANCE MISUSE

- South West London had the highest proportion (11.7%) of drug use amongst all London regions as of 2018/19



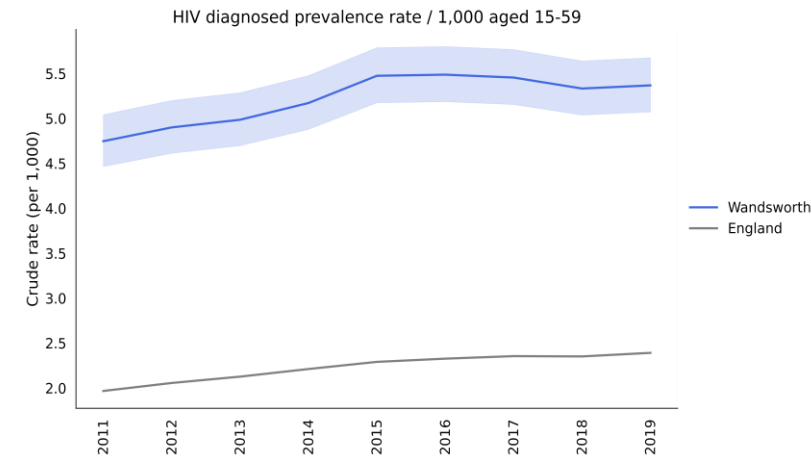
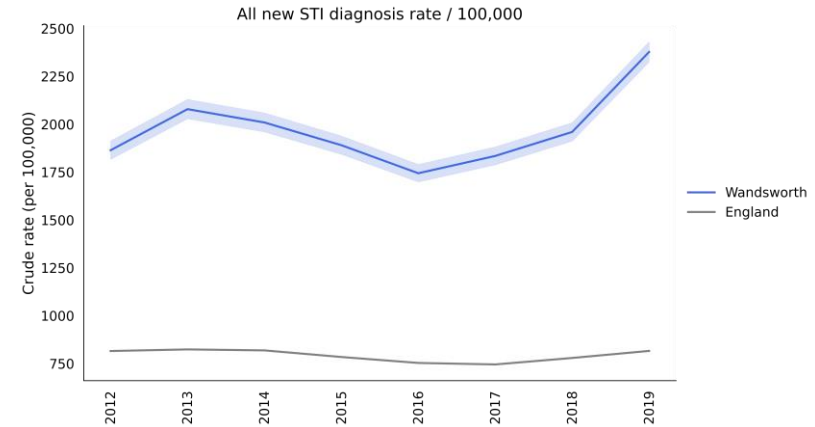
Behavioural and Metabolic Risk Factors – EXCESS WEIGHT & PHYSICAL INACTIVITY

- Half of the adult population being classified as overweight or obese
- 15, 145 residents as of 2019/20 with a diagnosis of diabetes and a further 23,500 with Non-diabetic Hyperglycaemia and 33,240 residents on practice lists with a diagnosis of Hypertension
- In 2019/20, 17.5%, of adults are physically inactive adults (8th lowest rate in London).



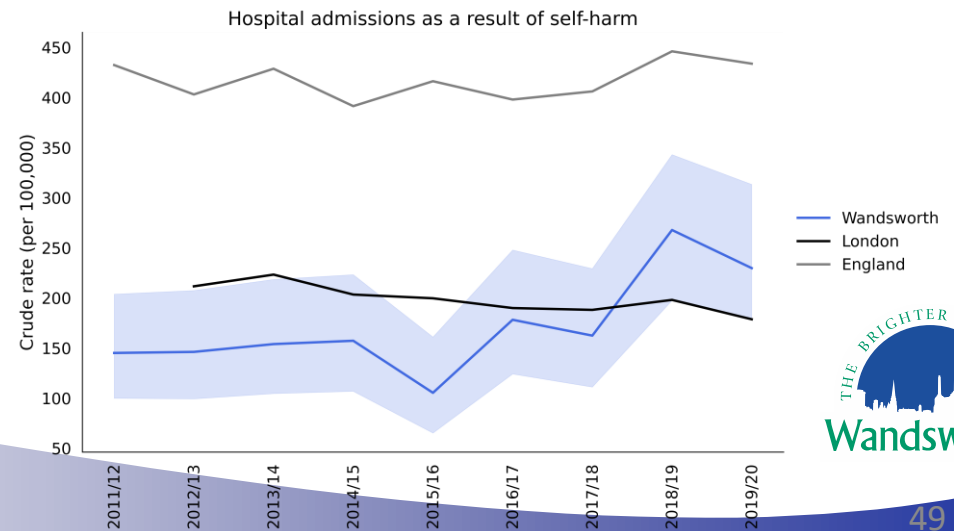
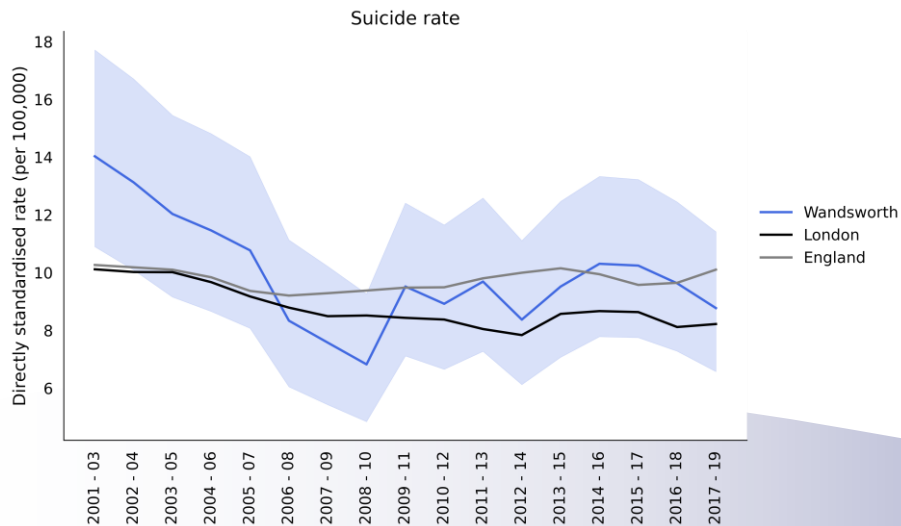
Sexual Health

- In 2019, Wandsworth's rate of all newly diagnosed sexually transmitted infections was 2378 per 100,000 (n=7838), which is the 7th highest rate in London.
- Since 2016, chlamydia diagnostic rate in people aged 25 and over in Wandsworth has been increasing.
- Wandsworth's HIV diagnosed prevalence rate was 5.4 per 1,000 population aged 15-59 (n=1233), which is the 16th highest rate in London.
- Wandsworth's abortion rate was 17.4 per 1,000 females (n=1614), which is the 6th lowest rate in London.
- Wandsworth's total rate prescribed LARC (excluding injections) was 50.1 per 1,000 females (n=4655), which is the 5th highest rate in London.
- Wandsworth's rate of GP prescribed LARC was 22.0 per 1,000 females (n=2039), which is the 5th highest rate in London.



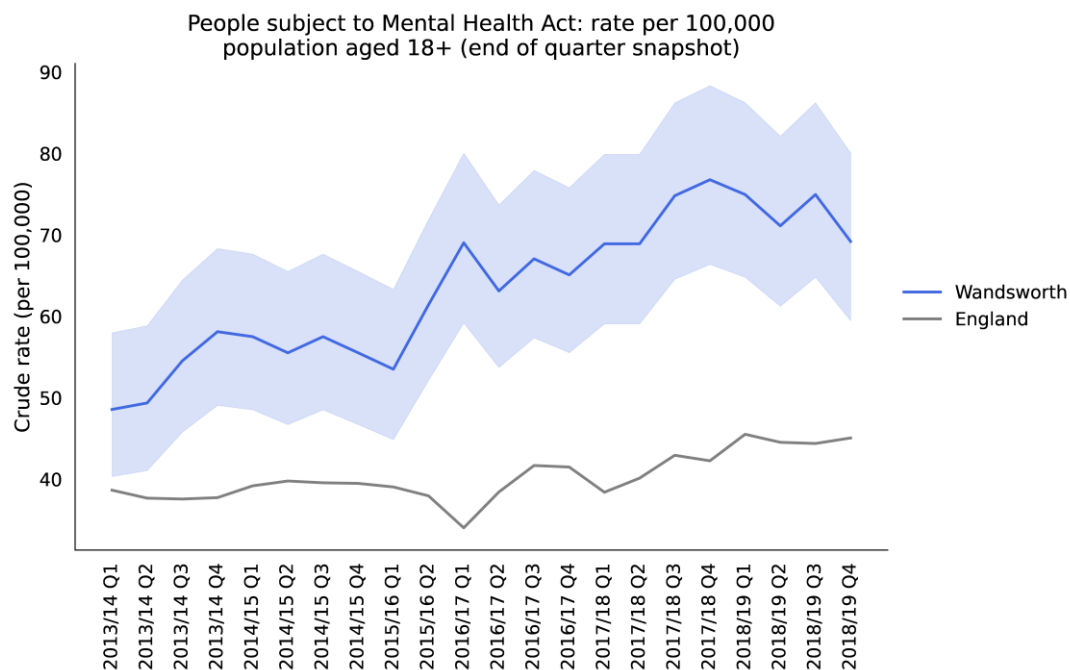
Mental Health

- The estimated common mental health disorder prevalence in Wandsworth is 11% higher than the England average
- 26,306 (7.8 %) of Wandsworth patients suffer from depression and 3,537 (1.1%) were diagnosed with depression
- In 2017/18 62 admissions to hospital were due to substance misuse in 15-24-year olds
- The rate of suicides in Wandsworth is higher than the London average
- Hospital admissions as a result of self-harm
- In 2019/20, Wandsworth's rate of hospital admissions for self-harm among adults aged 20-24 was 229.7 per 100,000 (n=50), which is the 10th highest rate in London.
- In 2017/18 there were 1,613 (0.4%) patients with dementia on the practice register in Wandsworth. This was lower than London and England and Wandsworth ranked 9th lowest across in London



Mental Health

- In 2018/19 Q4, Wandsworth's rate of people aged 18+ detained under the Mental Health Act was 69.2 per 100,000 population (n=180) this is the 11th highest rate in London.
- Wandsworth's figures are consistently significantly above the England average; the overall trend for the rate appears to be increasing



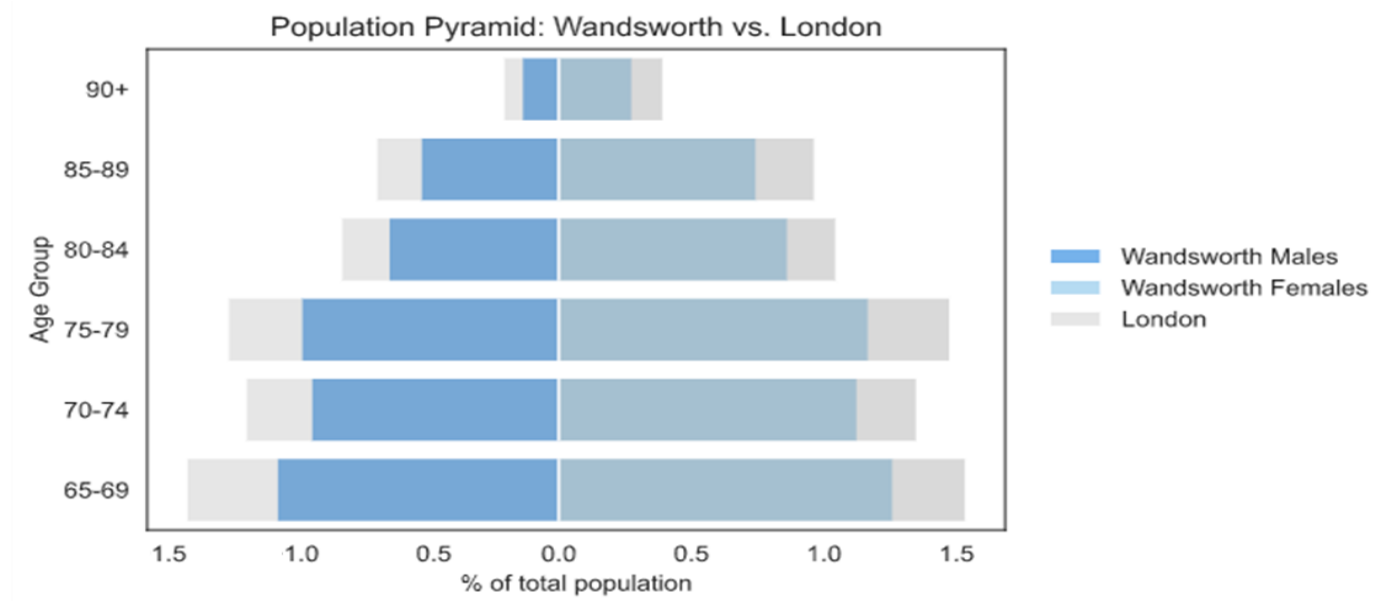
AGE WELL: Indicators of Health and Wellbeing

Public Health



Population: Age Well

Figure 1: Residents Aged 65+ as Proportion of Total Population - Comparison with London, 2021



9.7% (32,629) of the total population are 65 years and older. The proportion of older adults in the Borough is lower than the London average (12.3%) with all 65+ age groups making up a smaller population proportion than in London

Morbidity in Older Adults

Conditions Linked to the Highest Number of Years of Life Lived with Disability (Ranked) in Wandsworth and London, 2019

Top 5 conditions accounting for greatest burden of disease (YLD rate per 100,000 population, % of total YLD)

Males and females aged 70+

Sex	Area name	1st	2 nd	3rd	4th	5th
Males	Wandsworth	Diabetes (2812, 10.4%)	Age-related hearing loss (2142, 7.9%)	COPD (2040, 7.6%)	Low back pain (1876, 7.0%)	Falls (1435, 5.3%)
Females	Wandsworth	Low back pain (2780, 9.6%)	Diabetes (2354, 8.1%)	Age-related hearing loss (2217, 7.7%)	Falls (1995, 6.9%)	Osteoarthritis (1767, 6.1%)

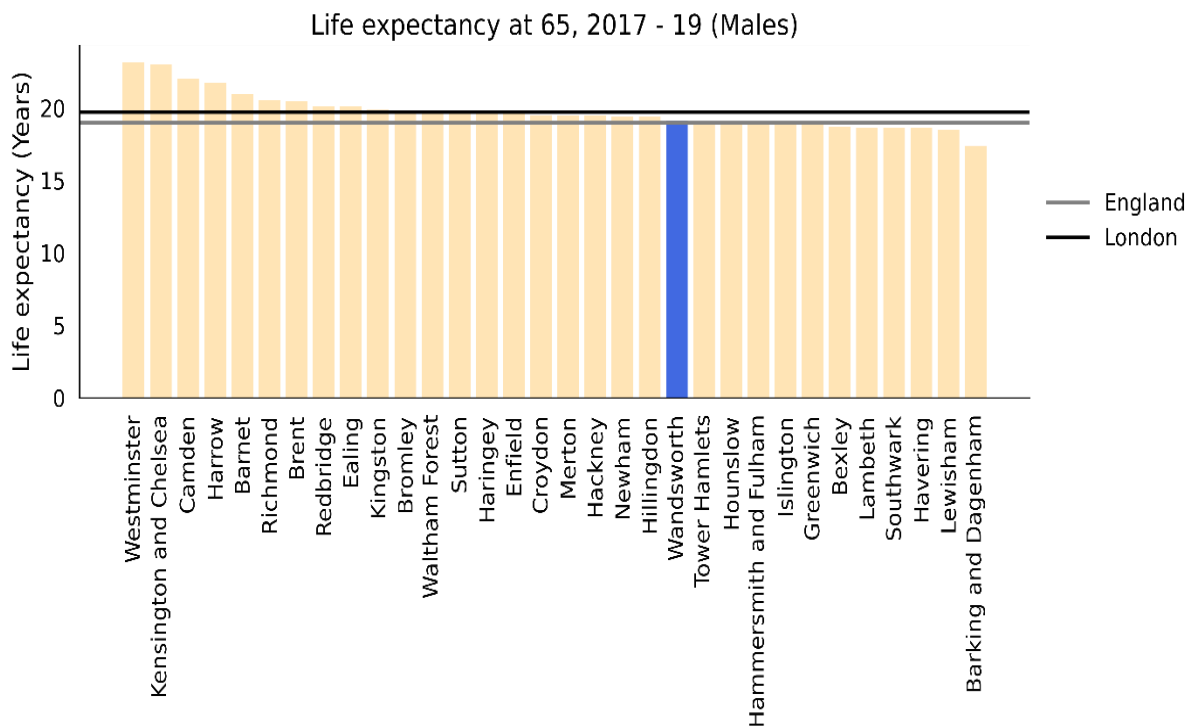
Years lived with disability (YLD) is a measure of morbidity that combines the prevalence of each disease with a rating of the severity of its symptoms (excluding death), to give an overall measure of the loss of quality of life.

Public Health



Male Life Expectancy at 65yrs

Male Life Expectancy at Age 65 by Local Authority, 2017-19



In 2017-19 Wandsworth's male life expectancy at the age of 65 was 19.1 years (12th lowest) in London, which was 0.7% higher than the England average and 3.0% lower than the London average but life expectancy continues to improve.

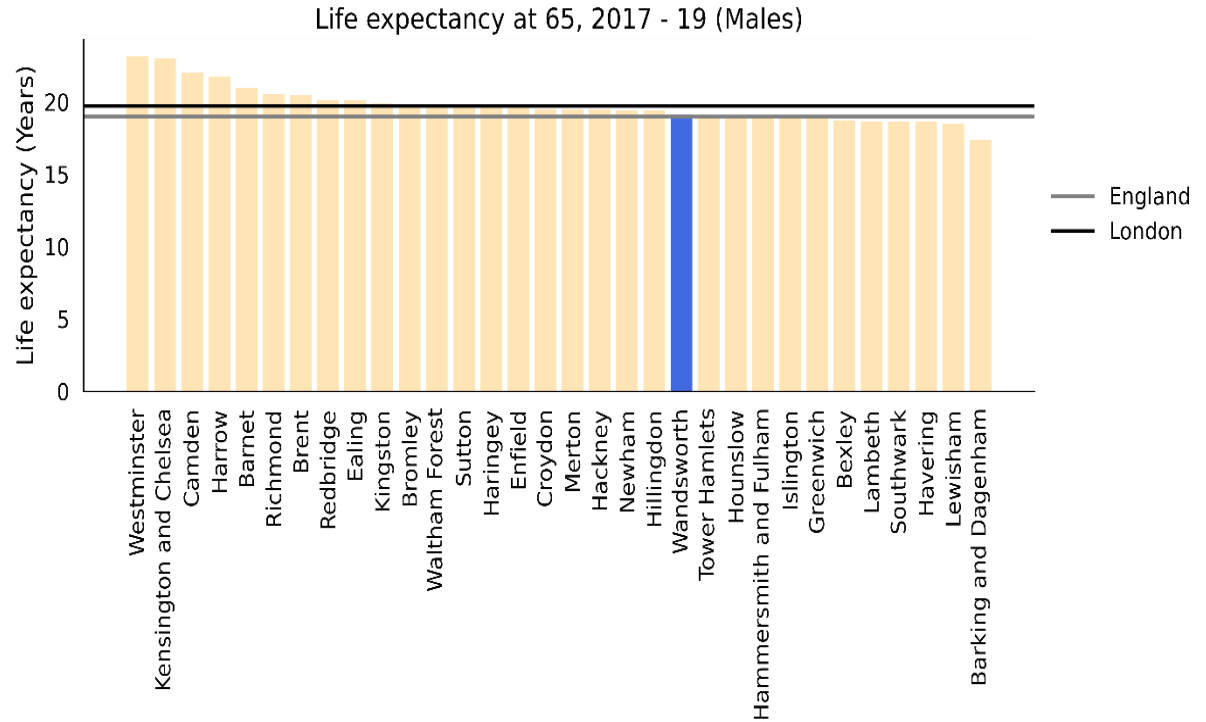
Public Health



Female Life Expectancy at 65 years

Wandsworth's latest female life expectancy at age 65 was 21.8 years, the 11th lowest in London, which was 2.4% higher than England average and 2.2% lower than London average. Female life expectancy continues to improve.

Female Life Expectancy at Age 65 by Local Authority, 2017-19

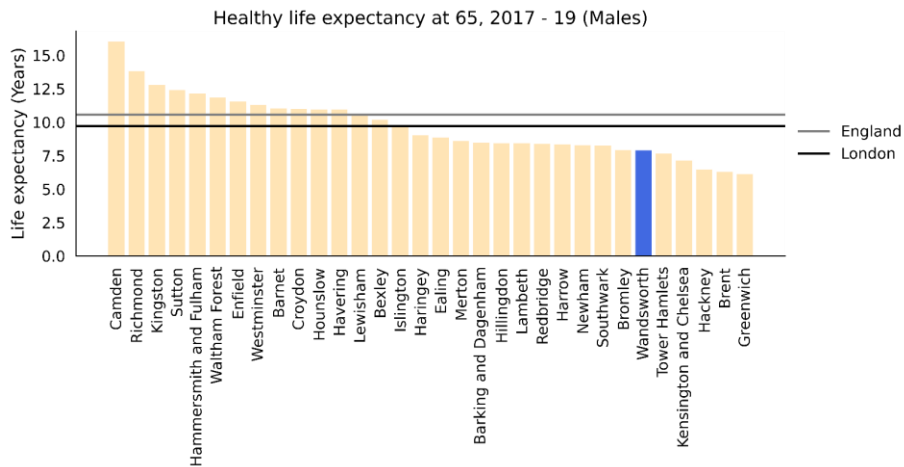


Public Health

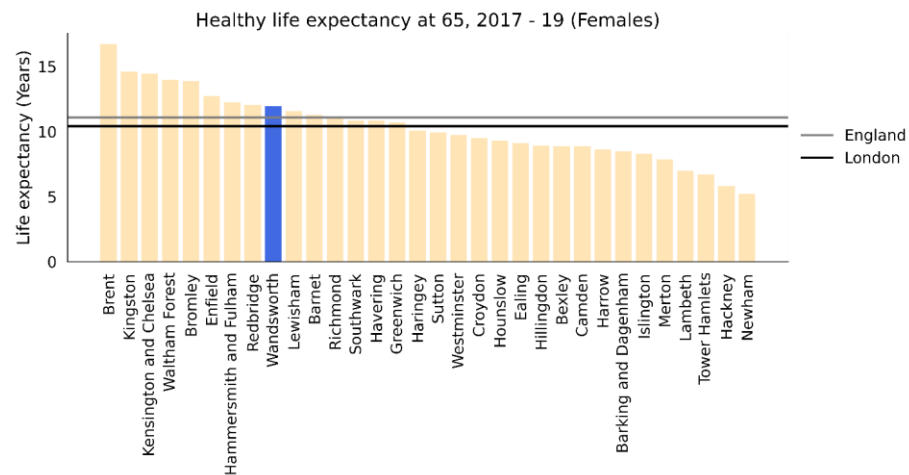


Healthy Life Expectancy at 65 years

Male Healthy Life Expectancy at Age 65 by Local Authority, 2017-19



Female Healthy Life Expectancy at Age 65 by Local Authority, 2017-19



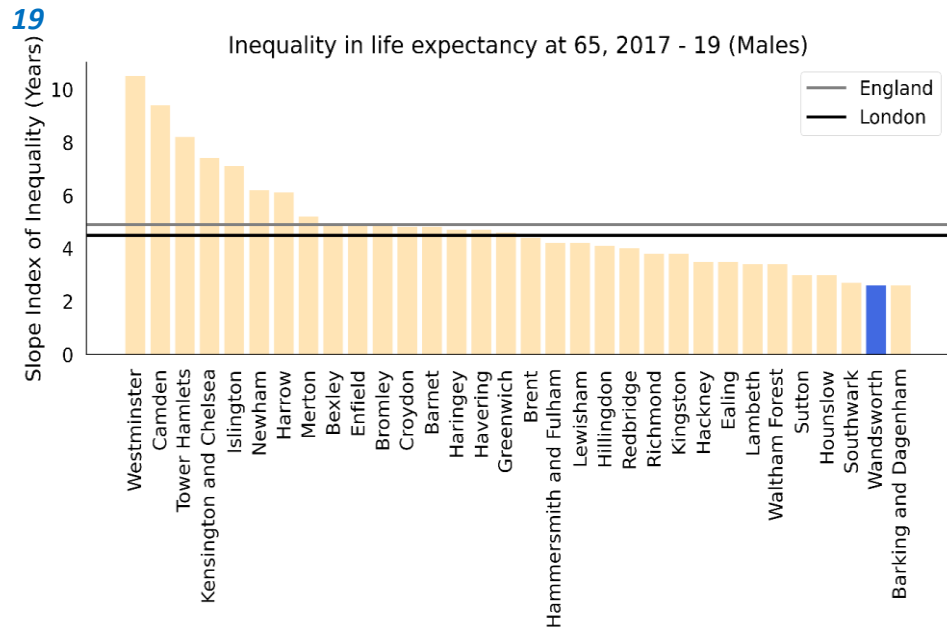
- Healthy life expectancy is the number of years of life spent in good health.
- Male healthy life expectancy in 2017-19 was 27.8% lower than in 2009 - 11, in comparison with 6.2% increase in England's rate in the equivalent time period.
- Female healthy life expectancy in 2017-19 was also 14.8% lower than in 2009–11, in comparison with 4.1% increase in England's rate in the equivalent time period.

Public Health

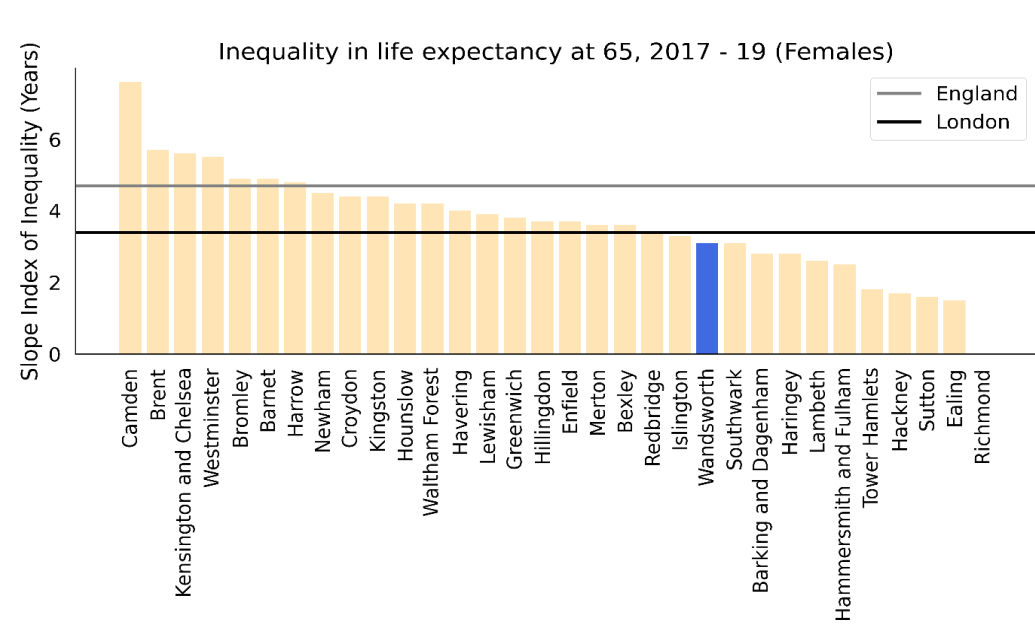


Inequalities in Life Expectancy at 65 years

Inequality in Male Life Expectancy at Age 65 by Local Authority, 2017-19



Inequality in Female Life Expectancy at Age 65 by Local Authority, 2017-2019



Wandsworth has a gap of 2.6 years in life expectancy at age 65 between males in the least deprived areas compared to those in the most deprived areas, the second lowest value in London. For females the gap of 3.1 years in life expectancy at age 65 between females in the least deprived areas compared to those in the most deprived areas, the 10th lowest in London.

Public Health



Mortality in Older Adults

Cause of Mortality in Males and Females Aged 70 and over in Wandsworth, 2019

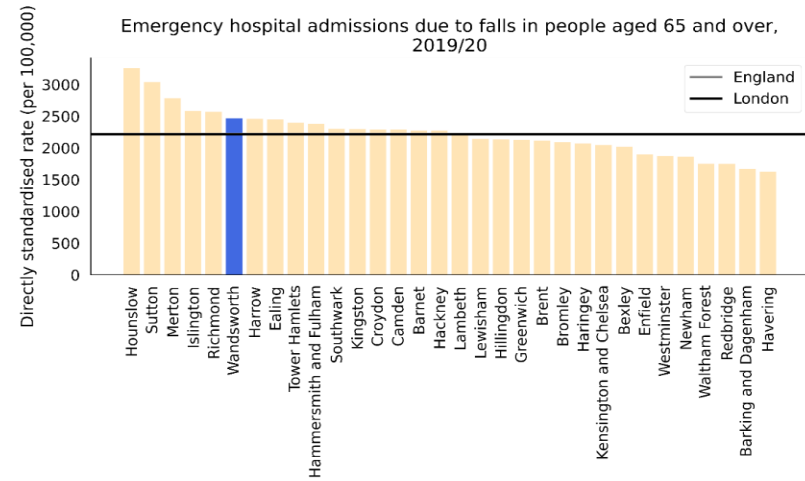
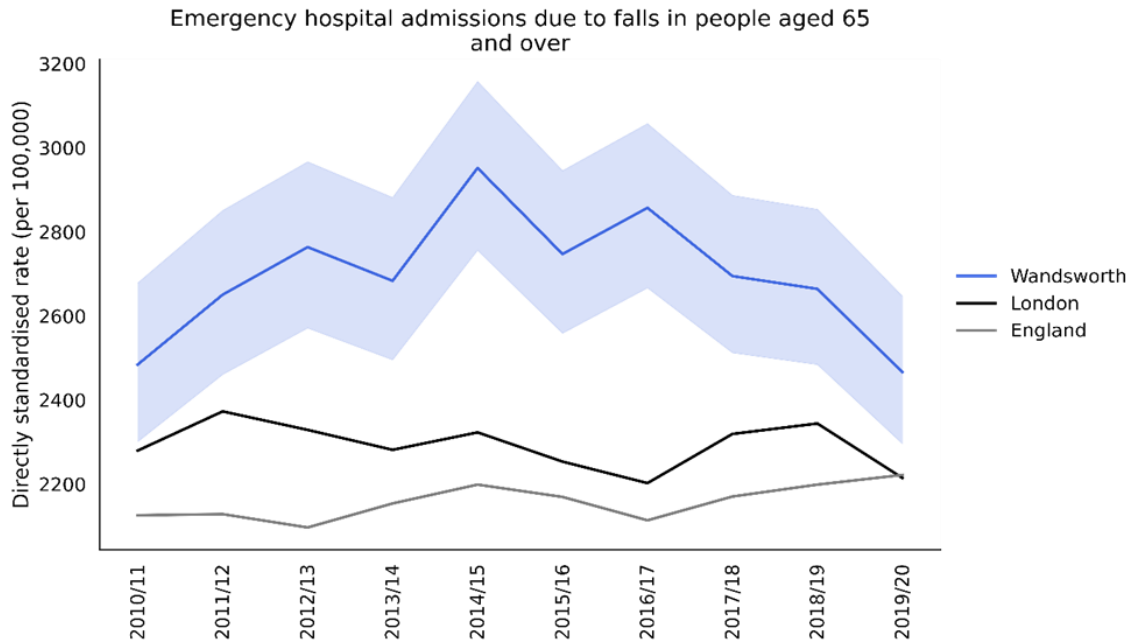
	Cause of death, 2019				
	Males and females aged 70+ (death rate per 100,000, % of total YLD)				
	1st	2 nd	3rd	4th	5th
Wandsworth Males	Ischaemic Heart Disease (785, 16.1%)	COPD (419, 8.6%)	Lower respiratory infections (392, 8.0%)	Stroke (339, 6.9%)	Lung Cancer (315, 6.4%)
London Males	Ischaemic Heart Disease (912, 16.6%)	COPD (453, 8.2%)	Lower respiratory infections (444, 8.1%)	Stroke (384, 7.0%)	Lung Cancer (362, 6.6%)
Wandsworth Females	Ischaemic Heart Disease (672, 13.3%)	Lower respiratory infections (476, 9.4%)	Alzheimer's disease (447, 8.9%)	Stroke (435, 8.6%)	COPD (368, 7.3%)
London Females	Ischaemic Heart Disease (664, 13.4%)	Lower respiratory infections (475, 9.6%)	Alzheimer's disease (473, 9.5%)	Stroke (447, 9.0%)	COPD (343, 6.9%)

Public Health



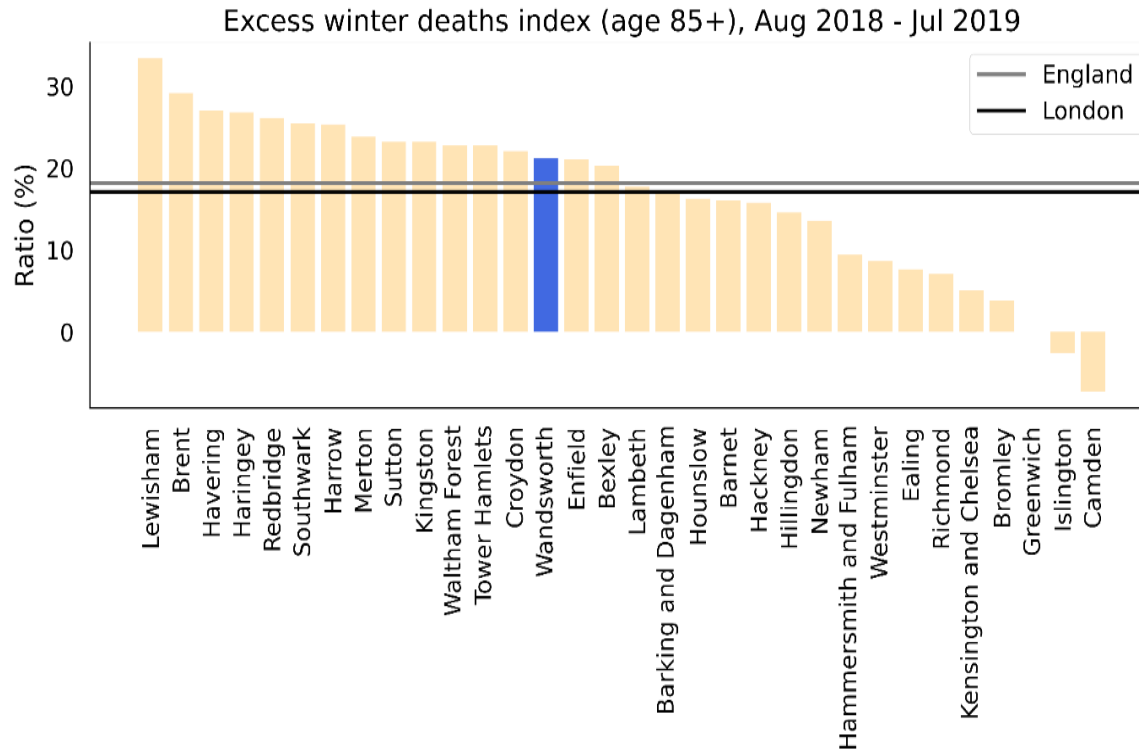
Falls

- Wandsworth's latest rate of emergency admissions due to falls in people aged 65+ was 2,467 admissions per 100,000 (n=775) the 6th highest rate in London. Although the rate has been steadily decreasing in the last 3 years (mainly due to substantial reduction in falls in residents aged 80+), it still remains significantly higher than the average rates for England and London
- Low rate of hip fractures
- Wandsworth's latest excess winter deaths of people aged 85 and over was 21% (n=34 , 14th highest rate in London. which 16% higher than England average and 24% higher than London average.



Excess Winter Deaths

Excess Winter Deaths of People Aged 85+ by Local Authority, Aug 2018 - Jul 2019



The number of excess winter deaths is linked to the outside temperature and the underlying level of disease in the population as well as other factors, such as how well-equipped people, and their environments, are to cope with the drop in temperature.

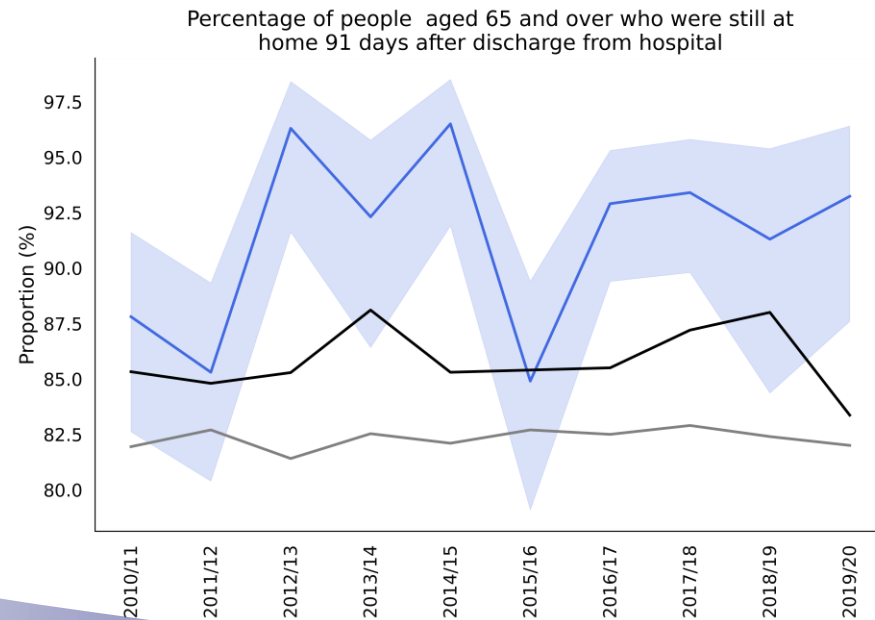
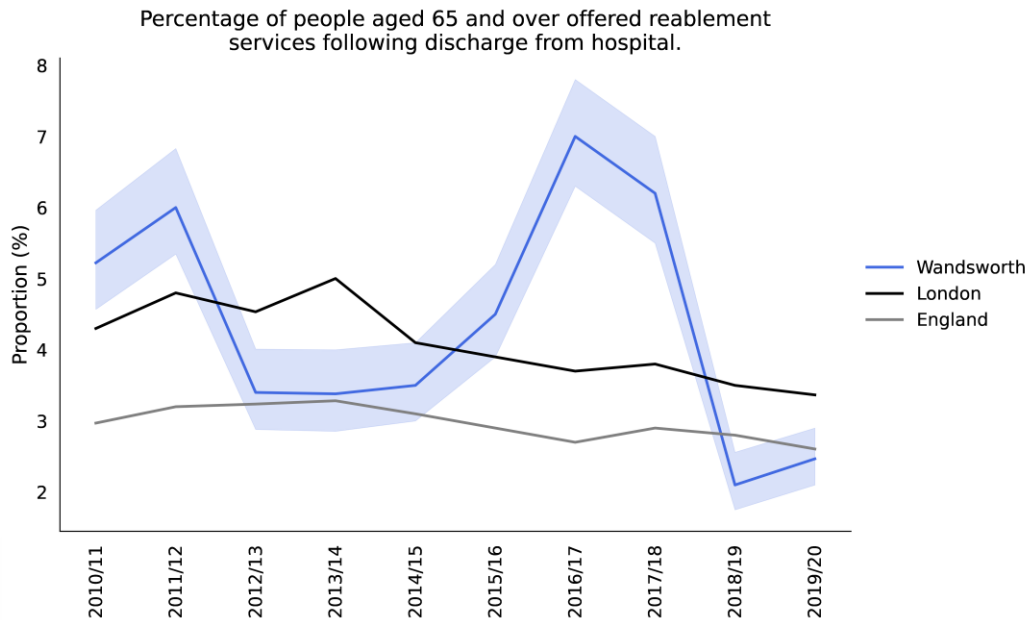
Wandsworth's latest excess winter deaths of people aged 85 and over was 21% (n=34) the 14th highest rate in London, which is 16% higher than the England average and 24% higher than London average. The latest Borough's figure was also 28% lower from the baseline year (Aug 2001 - Jul 2002), in comparison to 28% decrease in England's rate in the equivalent time period.

Public Health



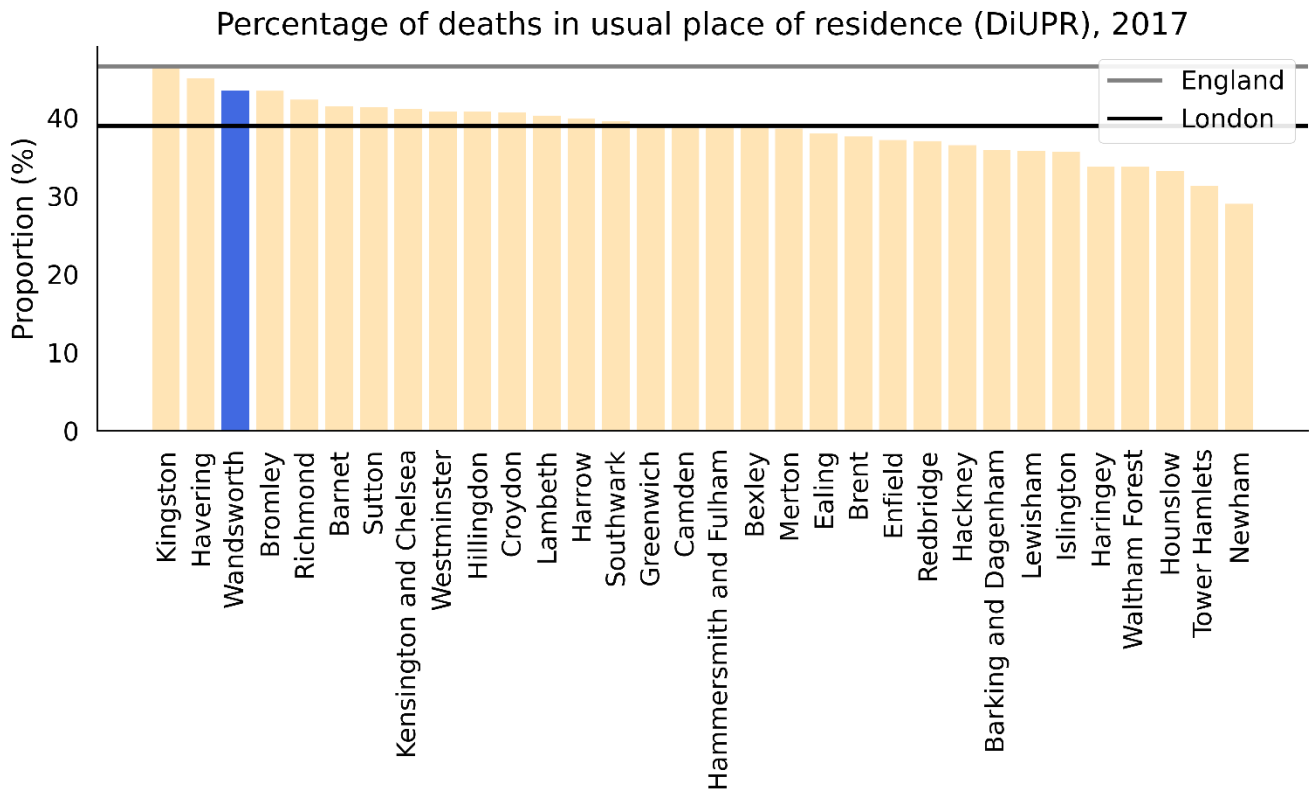
Reablement Services

- Wandsworth's latest percentage of people aged 65 and over who were offered reablement services and were still at home 91 days after discharge from hospital was 93% (n=124) the 4th highest rate in London
- In 2019/20, Wandsworth's percentage of people aged 65 and over were offered reablement services following discharge from hospital was 3% (n=133) the 9th lowest rate in London



Deaths in Usual Place of Residence

Percentage of Deaths in Usual Place of Residence, 2017



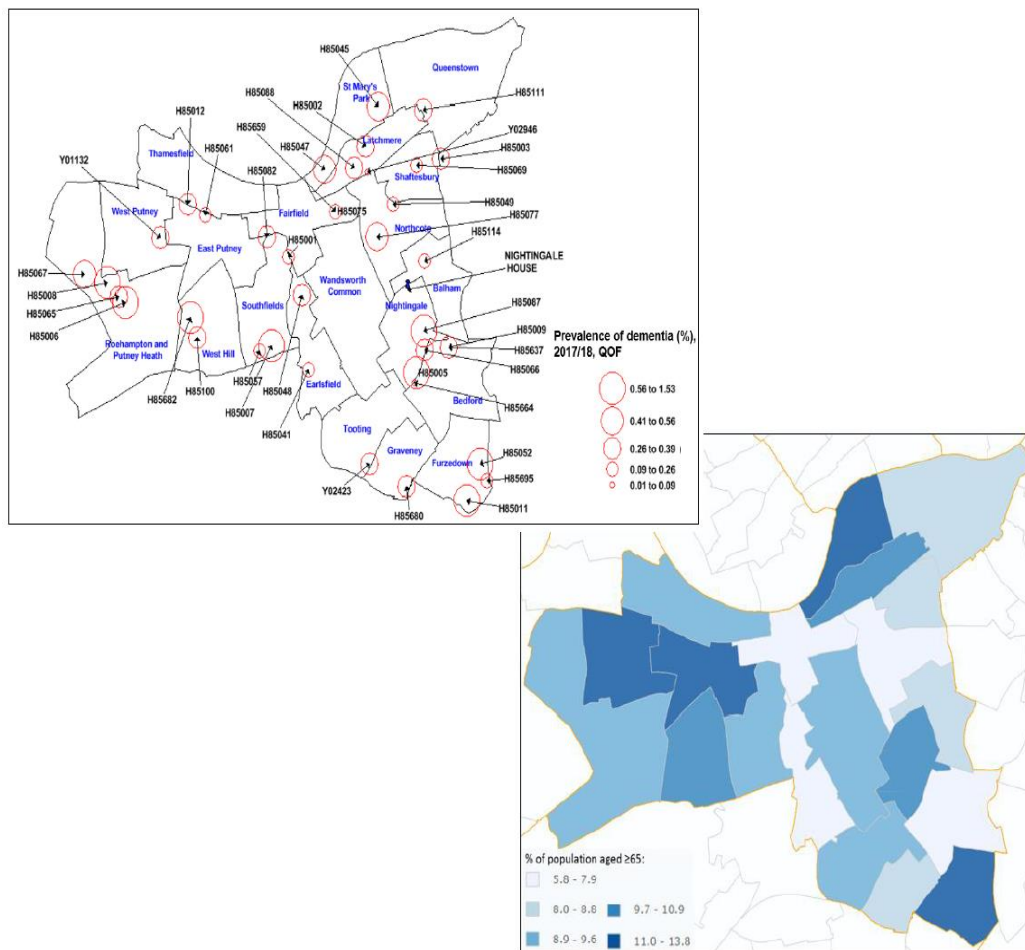
Wandsworth's percentage of deaths in usual place of residence (DiUPR) in 2017 was 43 (n=633) the 3rd highest rate in London, which was 6.7% lower than the England average and 11.5% higher than the London average. The latest Borough's figure was also 61.0% higher from the baseline year (2004), in comparison to 32.6% increase in England's rate in the equivalent time period.

Public Health



Dementia Age Distribution

Dementia Prevalence Geographic Variation Data



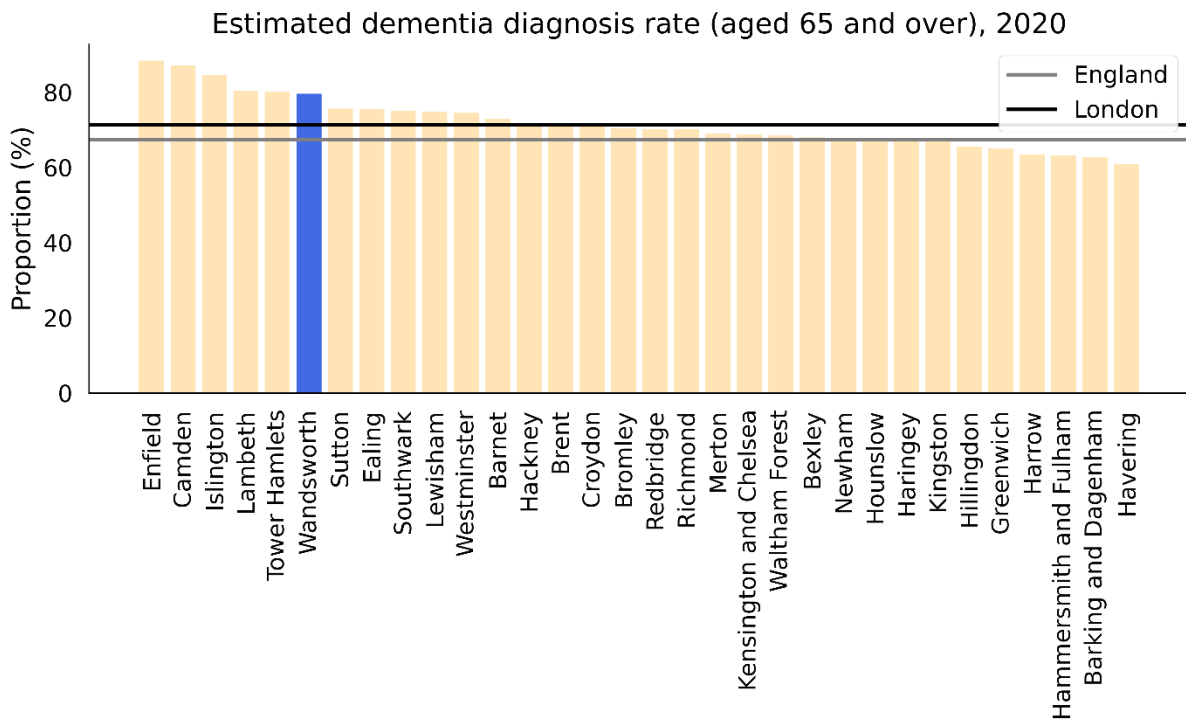
- Wandsworth's recorded prevalence of Dementia in people aged 65+ was 5%, the 4th highest rate in London
- Wandsworth's health services are identifying and diagnosing 79.6% of the estimated cases. This is the 6th highest rate in London
- Generally, Dementia prevalence is higher in southern and western Wards of the Borough, reflecting the higher proportion of ≥65 residents who live in those areas
- Nightingale and Furzedown in the South, and West Putney and Roehampton and Putney Heath in the West all having relatively high prevalence rates. Of note, is that Nightingale has the highest prevalence of Dementia out of all London wards at 1.5%
- Wandsworth's latest rate (2019/20) of emergency admissions of people aged 65+ diagnosed with Dementia was 4820/100,000 (n=1515) the 7th highest rate in London

Public Health



Dementia Prevalence

Estimated Dementia diagnosis rate Population Aged 65+ by Local Authority, 2020



Based on Dementia prevalence estimates, Wandsworth’s health services are identifying and diagnosing 79.6% of the estimated cases. This is the 6th highest rate in London which was 18.1% higher than England average and 11.6% higher than London average. The latest Borough's figure was also 10.9% higher from the baseline year (2017), in comparison to 0.7% decrease in England's rate in the equivalent time period.

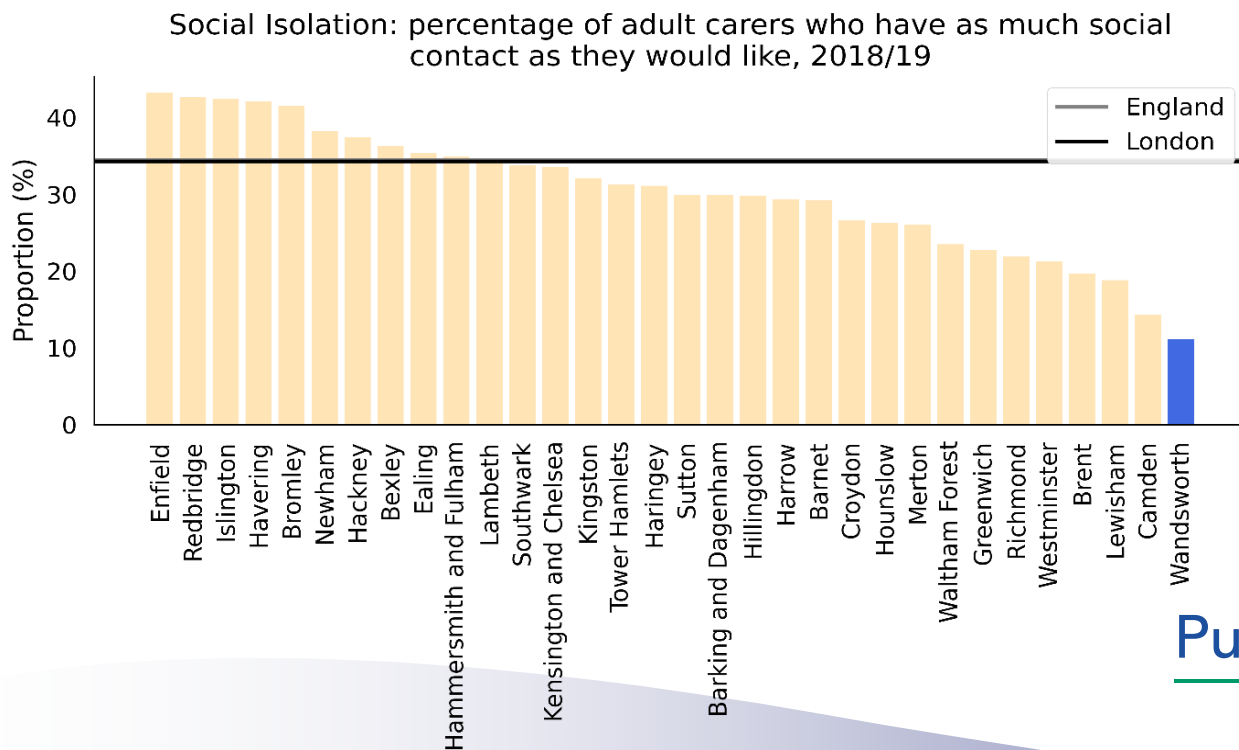
Public Health



Social Isolation

In 2019/20 in Wandsworth the percentage of adult social care users who have as much social contact as they would like was 41% (n=685) the 15th highest rate in London, which was 6.5% lower than the England average and 1.2% higher than the London average. Social Isolation: the percentage of adult carers who have as much social contact as they would like Wandsworth's was 11.1% (n=10) the lowest rate in London, which was 67.8% lower than the England average and 67.6% lower than the London average

% of Adult Carers who have has as much Social Contact as they would like, 2018/19



Public Health



Community Voice

Public Health



Community Voice

- The community voice chapter presents the views of the community on their health and social care need using both anecdotal and survey based evidence, including viewpoints of organisations and individuals based on their experience in Wandsworth
- Community responses were gathered via telephone calls and using the Microsoft Teams, Zoom and GoToMeeting video calling facilities with the stakeholder organisations identified and contacted, as a part of the data gathering approach to the development of this chapter. The findings presented are drawn only from those organisations that responded to the request for input into this chapter
- There may be areas of health need not identified through the community voice research process. If an area of health or social care is not highlighted in the section, it does not mean that Public Health and its partners are not working actively on such topic; rather, it indicates that the topic was not raised as an issue by respondents during the consultation process.

Community Voice

Start Well covers areas of health and social care need during pregnancy, early years, childhood and adolescence. The main areas of need highlighted by the community respondents include:

- barriers to accessing services and information
- children and young people's mental health, risky behaviour; and
- children and young people's Special Educational Needs and Disabilities (SEND)

Discussions regarding this age group did not mention childhood obesity as an area of need.

Community Voice

In Live Well, healthy lifestyles and associated behaviours were not areas identified as having a significant need by the stakeholders interviewed during the research for this chapter. However, there are a few notable points to make including accessing information and identifying need. With regard to CVD, HealthWatch Wandsworth reported that deterioration in physical health often resulted in development or exacerbation of mental health conditions that were also present in patients, indicating the need for a more holistic approach for those with CVD, including the need for physical activity support, outlined earlier.

Patients also reported several areas for improvement in service provision, which they felt would be beneficial to those living with CVD:

- 1:1 dietary advice
- Support to understand changes to the body and the changes to their lifestyle that are needed to manage their condition
- Support to navigate and understand their health system to reduce the stress of managing it alone
- Improved communication between hospital and patients
- Better patient referrals to available services
- Mental health support to cope with the impact of CVD on their life
- More support based in the community and near their homes rather than from the hospital after discharge

Community Voice

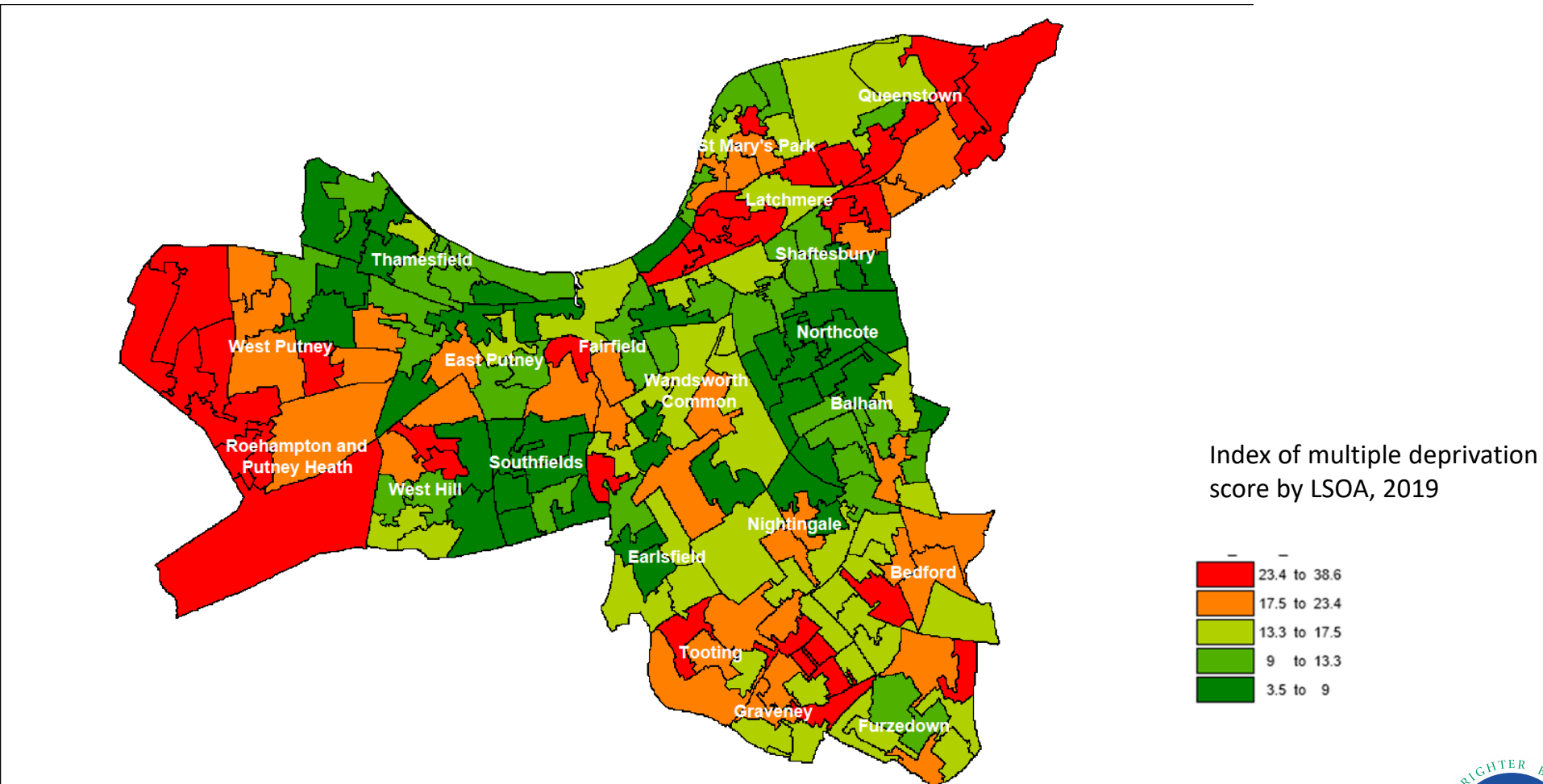
Age Well: Age Well considers the health and social care needs of people past retirement age and into older age. Areas of need identified during this research ranged from gaps in the provision of services such as falls support, mental health and co-ordination of care to more complex issues around social isolation, loneliness and Dementia.

Healthy Ageing: Several issues were raised by the community groups consulted relating to needs around ensuring healthy ageing. The main issues identified were:

- Wandsworth Older People's Forum reported that older people are asking for more places to exercise to improve their health and confidence as well as reduce isolation
- Wandsworth Older People's Forum also reported the need for more seats in the Borough for older people to rest. This would allow them to get out more as they would know there were safe spaces to stop when needed
- Falls and risk of falling are still a significant issue among older people in the Borough
- HealthWatch Wandsworth found that poor eye health significantly contributed to limitations on mobility, increased feelings of isolation and impacted on mental health
- Social isolation and loneliness were raised as a significant issue by Wandsworth Older People's Forum, particularly in the context of the COVID 19 Pandemic and reduced interaction among older people

PLACE: Wider Determinants

Index of Multiple Deprivation by Lower Super Output Area, LSOA



Public Health



Deprivation

- Males in least deprived areas of the borough live 5.5 years longer and females 5.2 years than those in more affluent areas
- Wandsworth ranked 6th lowest borough in London for fuel poverty with 1 in 10 households experiencing poverty
- Wandsworth ranked 10th lowest borough in London for the proportion of residents claiming child benefit. However, the use of food banks, providing emergency food supplies, is increasing with one-third of food being provided for children of primary school age
- Wandsworth Foodbank saw an 11% increase on the previous year, and a 78% increase from 5 years ago in the three-day emergency food supplies (2019)

Growth

- Local population increase is currently driven by natural change (more birth than deaths) and in the next 10 years (2029) will be driven by large new housing developments such as Nine Elms
- 60% of the projected population increase will take place in 4 wards – Queenstown, Fairfield, St. Mary's Park and Thamesfield

Food Poverty

- Between April 2018 and March 2019, Wandsworth Foodbank provided a record 5,770 three-day emergency food supplies which was an 11% increase on the previous year, and a 78% increase from 5 years ago.⁸⁹
- More than one-third of emergency food supplies were for children (37%), the majority of whom were primary school age or younger.

Statutory services made two-thirds (64%) of all referrals with the top three reasons for referral being:

- Income not covering essential costs- this is linked to benefits not keeping pace with the cost of living.
- Benefit delays- there is a five week wait for first payment of Universal credit therefore leading to foodbank referral
- Benefit changes- Universal Credit Advance payment is a debt, not a solution to Universal Credit's 5 -week wait. One-third of referrers cited repaying Advance Payment debt as a reason for food bank referral.

Fuel Poverty

Between 2011 and 2016, the proportion of households experiencing fuel poverty in Wandsworth declined from 9% (10,394 households) to 7% (9,853 households). However, between 2016 and 2017, in line with the London rate, there was a local increase to 10% (13,157) of households experiencing in fuel poverty. Compared against all 32 London boroughs, Wandsworth ranked as 6th lowest borough.

Housing

- **Affordability (Private Renting):** There were 3,980 private rents recorded in the 12 months up to Q1 2019 in Wandsworth, second highest in London. The median price of these rentals was £1,650 per month, which is lower than the average for Inner London at £1,700 per month but higher than London (£1,495 per month)
- **Home building:** In 2018, there were 146,162 dwelling in Wandsworth, a 9% increase from 2010. Dwelling per hectare in Wandsworth was 41.5 in 2018, lower than Inner London (46.2) but higher than London (22.3)
- **Council Housing:** As of 2018 there were 16,800 council properties in the Borough, 11.4% of the total.. The number of households waiting for Local Authority housing in Wandsworth in 2018 was 5,202
- **Regeneration:** Wandsworth has several large regeneration schemes underway, including Nine Elms Winstanley and York Road Estates, Roehampton Alton and Ram Brewery development
- **House prices:** In 2018, the median ratio of house prices to resident earnings in Wandsworth was 14.9. This is higher than the value for London, 13.1

PLACE: Healthy environments, communities and neighbourhoods

Public Health



Domestic Violence and Violence Against Women and Girls

- The demand and call upon domestic violence services has risen across the system, when comparing financial years of 2019/20 with 2020/21.
- Table below summarises reported crime, advocacy and MARAC demand for Wandsworth for the financial years 19/20 and 20/21.
- In 2020/21, Wandsworth has seen a 10% increase from 2019/20 in reported domestic violence, which is in excess of the London average of just 5.9% increase The reported crime levels for the previous three years had been relatively static.
- Domestic Abuse is a gender biased crime with around 70% of victims being women.

Domestic violence crime and incidents in Richmond, 2019/20–2020/21

Borough	Reported Crime (2019) 2020	Non-Crime Incidents (2020/21 only)	Advocacy IDVA (2019) 2020	Complex Advocacy (2019) 2020	Needs	MARAC (2019) 2020
Wandsworth	(2458) 2704 +10%	2049	(755) 937 +24%	(117) 125 +7%		(386) 510 +32%

Healthy Neighbourhoods

- Wandsworth has a Local Plan Policy adopted in 2016
- which seeks to restrict the number of hot food takeaways (A5 uses) within 400m of State Schools or Colleges where this could undermine their healthy eating initiatives.
- On 17th July 2019, Wandsworth Council declared a Climate Emergency, setting a target to be a carbon neutral organisation by 2030
- Road traffic and car ownership are decreasing in Wandsworth

Wandsworth has:

- The 16th highest level of noise complaints
- The % of the population exposed to noise pollution during the day is the 12th highest
- The % of the population exposed to noise pollution during the night is the 13th highest

Access to Healthcare Services

- **Primary Care:** There are 71 pharmacies and 53 GP practices, including 13 Health Centres, in Wandsworth. In Wandsworth, 96% of the population has access to GP by 15 minutes of walking or public transport. There are also 54 Dental Services and 25 Optician Services
- **St George's Hospital** is a large Teaching Trust which provides Community Services to residents of Wandsworth, Local Hospital Services and Specialist Services
- **Queen Mary Hospital** provides various Community and Clinical Health and Non-emergency Medical Services
- **Royal Hospital for Neurodisability** which provides rehabilitation and long-term care for people with complete neurological disabilities
- **Care Homes:** There are 33 Residential and Nursing Care Homes in the Borough

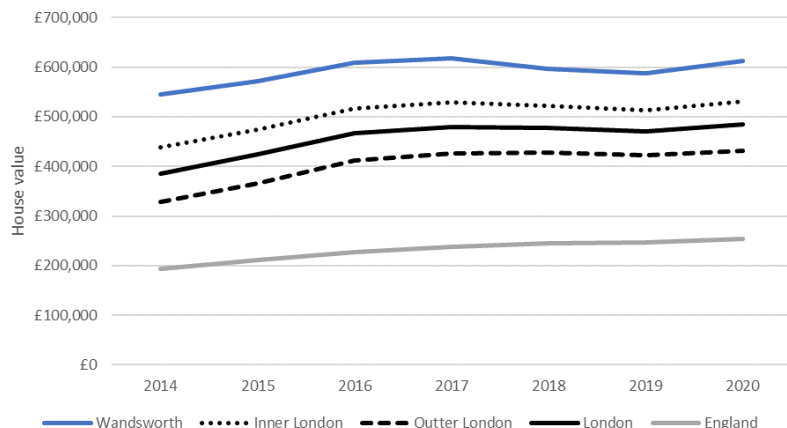
Built Environment

- Wandsworth is an Inner London Borough with 20 wards covering an area of 13.23 sq miles
- With the Borough's good transport links, Wandsworth has a balance of proximity to central London but with more accessibility to open space and balance of high rise and low-rise buildings
- The Borough has 5 vibrant town centres in Balham, Clapham Junction, Putney, Tooting and Wandsworth Town. There are large housing and business developments in Wandsworth Town, Battersea and Nine Elms

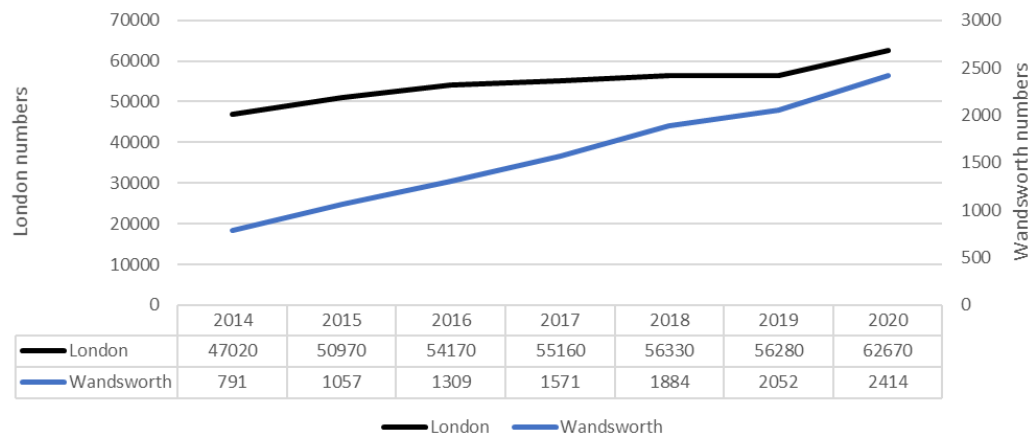
Housing & Homelessness

- There are 147,970 properties in Wandsworth. The median price of a property is £618,500. Most properties in Wandsworth are flats or maisonettes (69%) which is higher than the London average (55%) and over double the national average (23%).
- There is a significant and continued demand from applicants accepted onto the Council’s housing queues with 8,880 applicants on the queue for social housing at the end of 2019/20. In comparison, 876 dwellings were available for social let during that year. This has resulted in an increasing number of households in temporary accommodation in Wandsworth, following the London-wide trend.

Housing Cost Comparison, 2014-2020

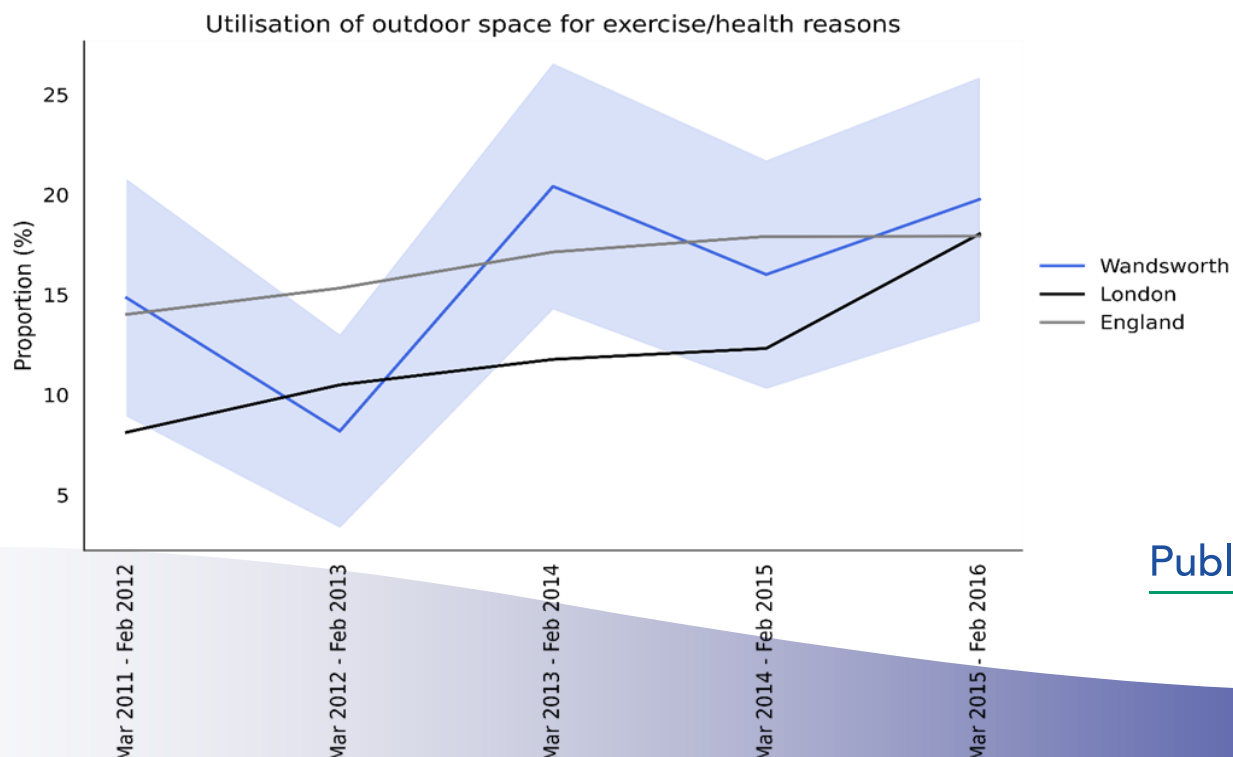


No. of households in temporary accomodation



Natural Environment

- There are 32 public parks in the Borough including Wandsworth Common, Tooting Bec Common, Wandle Valley and Battersea Park
- The Borough also has five miles of Thames River frontage
- There are ten allotment sites in Wandsworth. Eight are managed by Enable Leisure and Culture on behalf of Wandsworth Council. Two are managed by Roehampton Garden Society (RGS)
- In Wandsworth, 24.4% (76,875) of residents had access to woodland, much higher than London (12.9%) and England (16.8%) and 19.8% of residents reported using outdoor space for exercise and health reasons (London=18.0%, England=17.9%)



Public Health



Arts, Culture and Leisure

- Within Wandsworth, the majority of the population (87%) are culturally active but there are notable pockets within the Borough where (13%) residents have little cultural or creative engagement
- **Cultural organisations:** there are 65 cultural organisations and at least 2860 creative organisations based in Wandsworth
- **Landmarks:** There are also many landmarks in the Borough which can be enjoyed, including Battersea Power Station, London Heliport, Young's Brewery and the Peace Pagoda. Battersea Park is also a venue for many events including the Battersea Park Dog Show, Live at the Bandstand and the London Motor Show
- **Vibrant town centres:** Vibrant town centres in Balham, Clapham Junction, Putney, Tooting, Wandsworth offer easy access to services, foster social interactions and support local economy
- **Sports and Leisure Venues:** Locally there are 8 sports centres, four leisure centres, 5 swimming pools including the Tooting Bec Lido, 16 sports pitches and 10 areas with tennis courts

Local Business Employers

- By industry, the largest number of enterprises in Wandsworth are professional, scientific and technical (n=5,225; 31%), information and communication (n=2,410; 14%) and business administration & support services (n=1770; 10%)
- . The largest industry group is real estate
- In 2017-18, 32% of Wandsworth's apprenticeships were achieved in Health, Public Services and Care, 28% were achieved in Business, Administration and Law while 17% in Retail and Commercial Enterprise

Unemployment

- At 4.3%, Wandsworth is estimated to have one of the lowest (7th lowest) unemployment rate in London (not including City of London) in the 12 months to June 2019.
- The 2011 census showed that Roehampton and Putney Heath had the highest rate of unemployment at 14% with the lowest seen in Northcote with 3%.
- The borough also has a lower claimant count compared to London and England in September 2019

Acknowledgments

The acknowledgments for specific areas of the JSNA are included at the end of the JSNA chapters.

Authors	Salman Klar	Insight and Analytics Manager
	Sally Bahri	Intelligence Analyst
Contributors	JSNA Operational Group	
Governance	JSNA Strategic Group	
Reviewer	Dr Nike Arowobusoye	Consultant in Public Health - Adults, Social Care and Health Care
	Shannon Katiyo	Director of Public Health
Image credits	Wandsworth Council, The Streets 2015	
Presented at	Wandsworth Health and Care Board June 3 rd 2021	
	Wandsworth COG June 9 th 2021	
	Wandsworth Care Alliance June 9 th 2021	
	Wandsworth Health and Care Board July 1 st 2021	
	Wandsworth COG July 14 th 2021	
The final JSNA draft reports were presented jointly with the CCG at the Wandsworth Health and Wellbeing Board June 24 th 2021		
Date release	19 th November 2021	
Description	Wandsworth Joint Strategic Needs Assessment Overview 2021	
Contact	Wandsworth Council	
	020 8871 6000	
	The Town Hall, Wandsworth High Street, London SW18 2PU	
Related Documents	DataWand	

For more information visit:

DataWand: <https://www.datawand.info/>

Wandsworth JSNA 2021: <https://www.wandsworth.gov.uk/health-and-social-care/public-health/public-health-publications/jsna/>

Public Health

