

JSNA

Joint Strategic Needs Assessment

AGE WELL

Authored by: JSNA COLLABORATORS
SEPTEMBER 2021



Contents:

1. Demographics
2. Main Causes of Morbidity and Mortality
3. Falls, Frailty and Mobility
4. Care and Support Services for Older People
5. Adult Social Care Outcomes
6. Vaccinations
7. Dementia
8. End of Life Care

Public Health



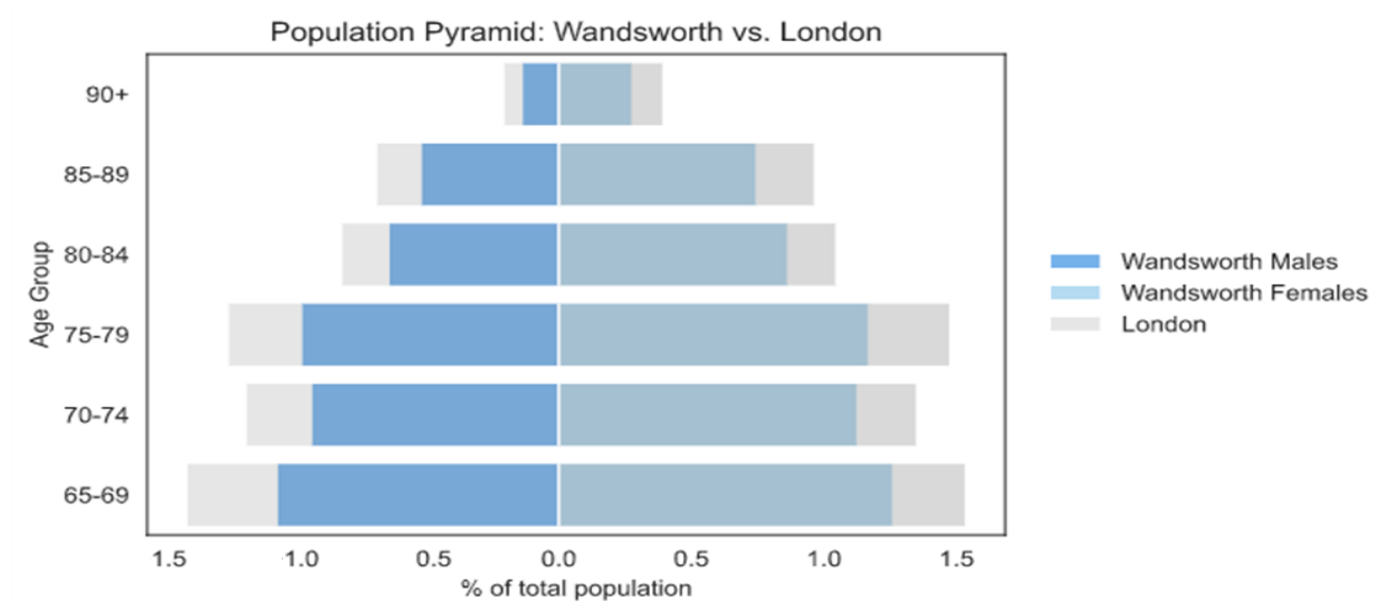
Demographics

Public Health



Population

Residents Aged 65+ as Proportion of Total Population - Comparison with London, 2021

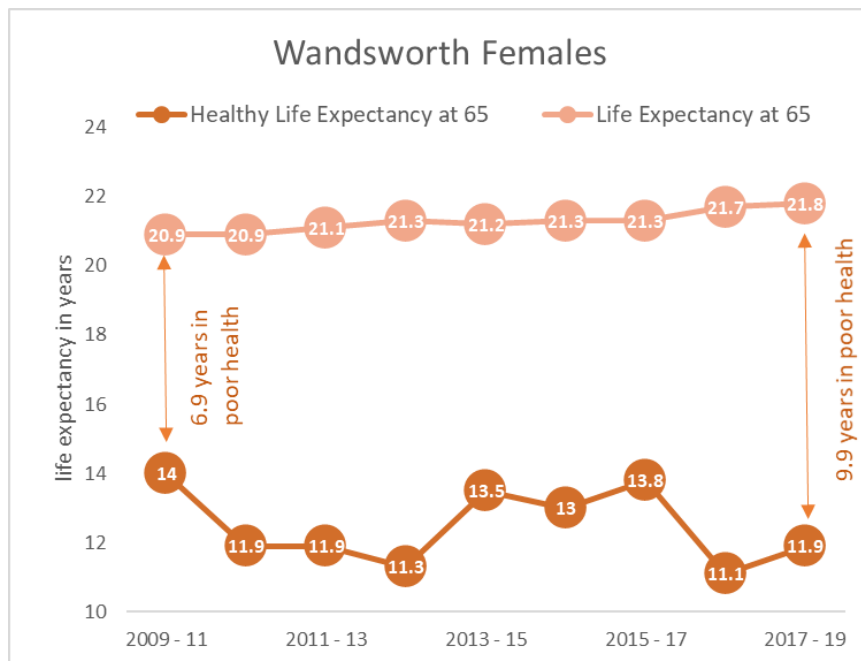
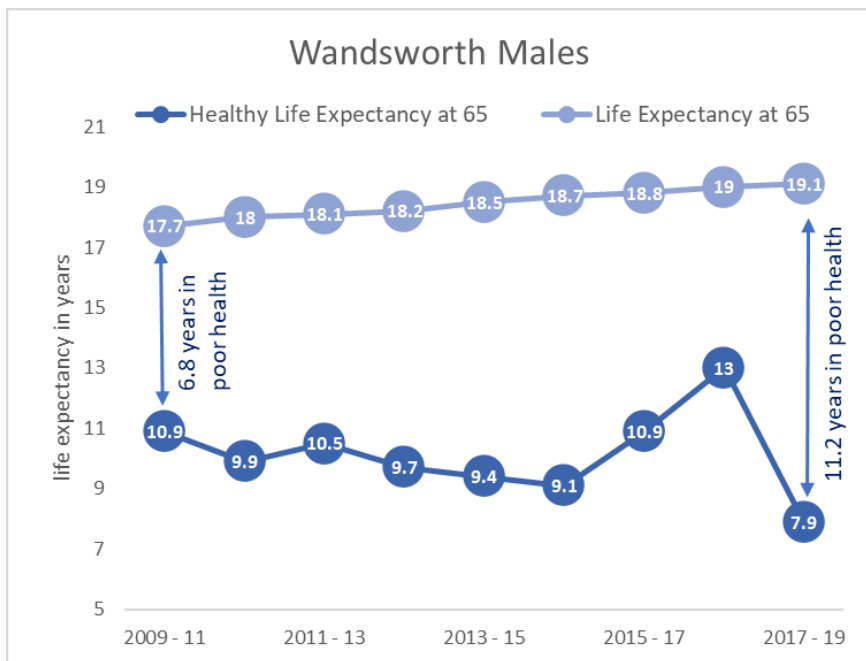


9.7% (32,629) of the total population are 65 years and older. The proportion of older adults in the Borough is lower than the London average (12.3%) with all 65+ age groups making up a smaller population proportion than in London

Public Health



Life Expectancy (LE) and Healthy Life Expectancy (HLE) at age 65

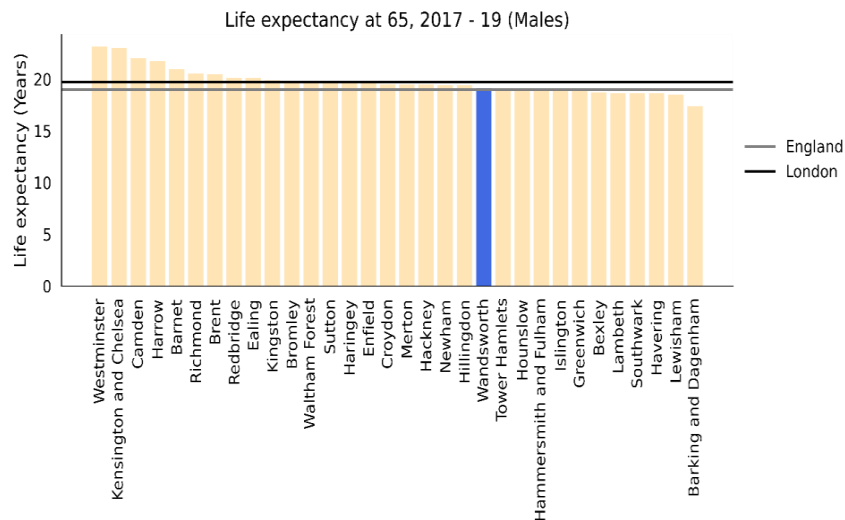
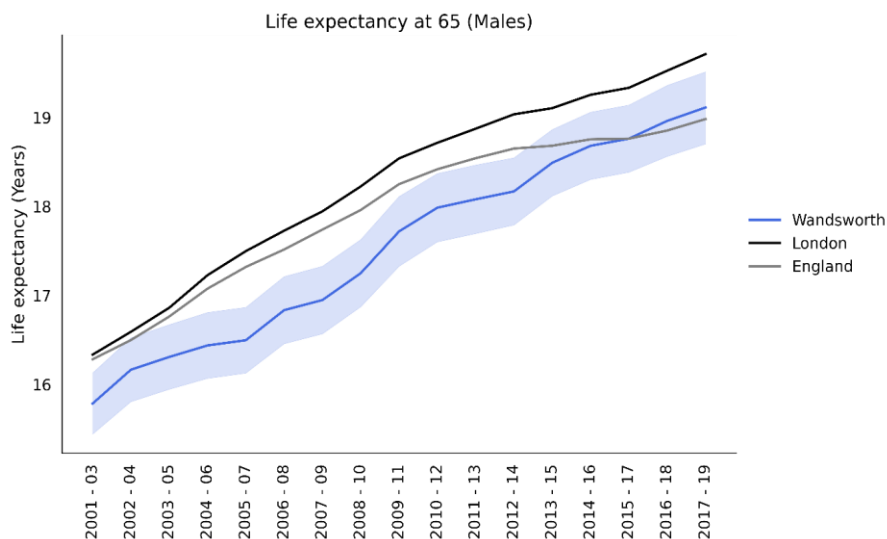


- Male and female life expectancy at age 65 continues to increase
- Similarly to HLE at birth, HLE at 65 fluctuates year on year
- Male healthy life expectancy at age 65 has dropped by more than 5 years - from 13 years in 2016-18 to 7.9 years in 2017-19.

Public Health



Male Life Expectancy at Age 65



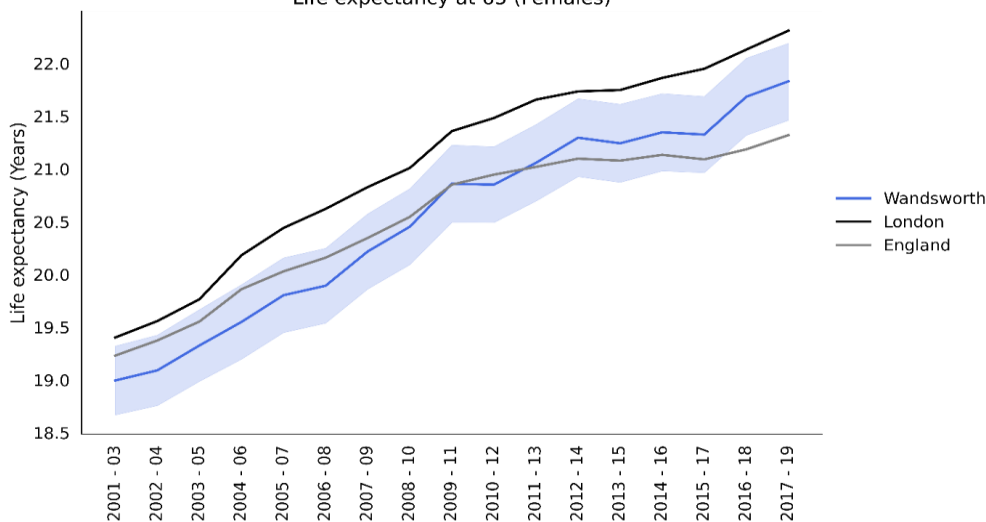
In 2017–19 Wandsworth's male life expectancy at the age of 65 was 19.1 years (12th lowest in London), which was 0.7% higher than the England average and 3.0% lower than the London average but life expectancy continues to improve.

Public Health

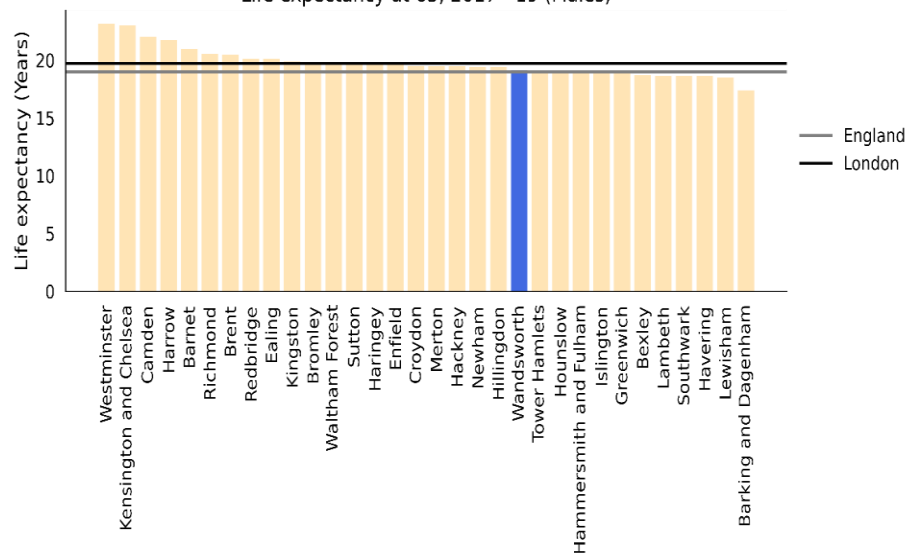


Female Life Expectancy at Age 65

Life expectancy at 65 (Females)



Life expectancy at 65, 2017 - 19 (Males)

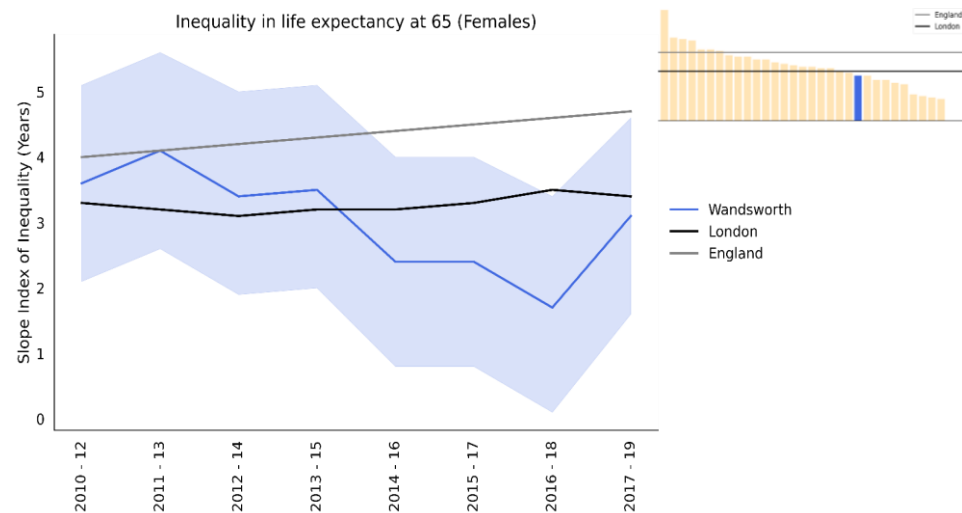
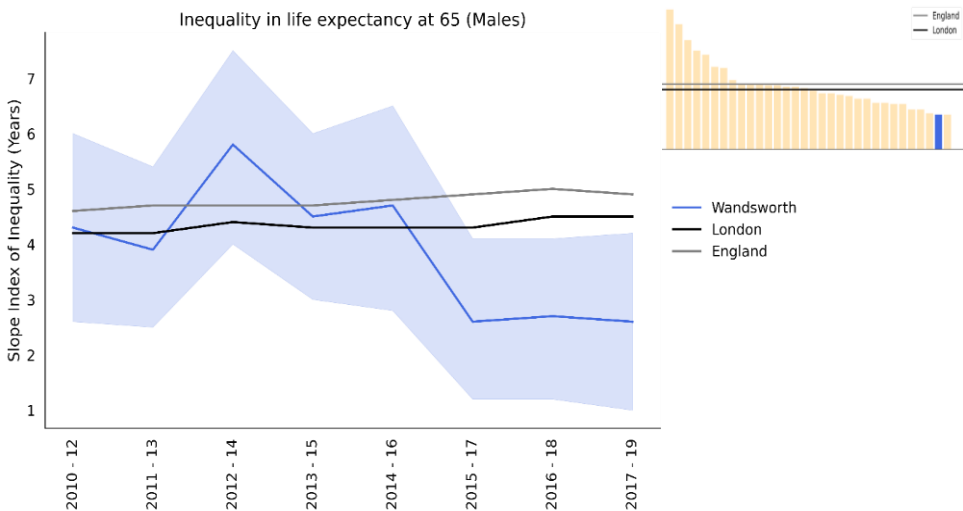


Wandsworth's latest female life expectancy at age 65 was 21.8 years, the 11th lowest in London, which was 2.4% higher than the England average and 2.2% lower than the London average. Female life expectancy continues to improve.

Public Health



Inequalities in Life Expectancy at 65

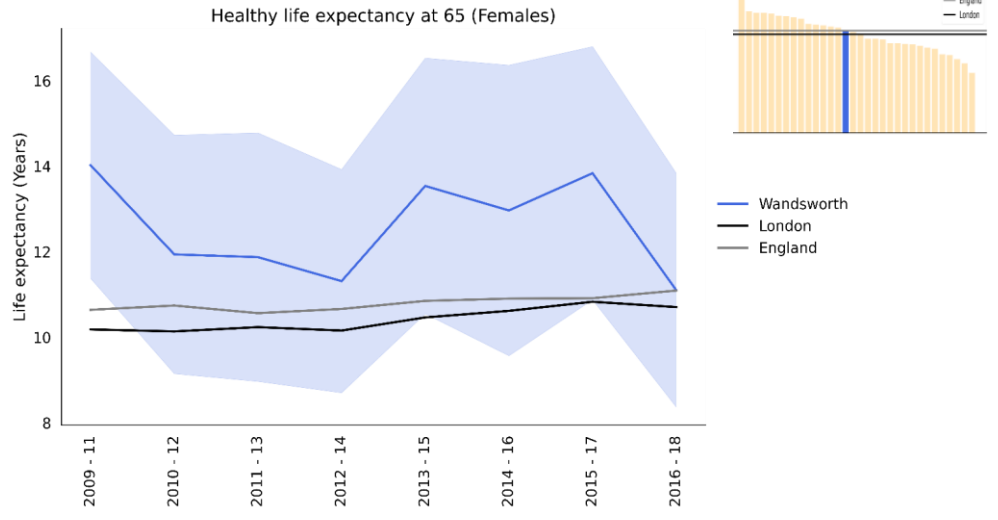
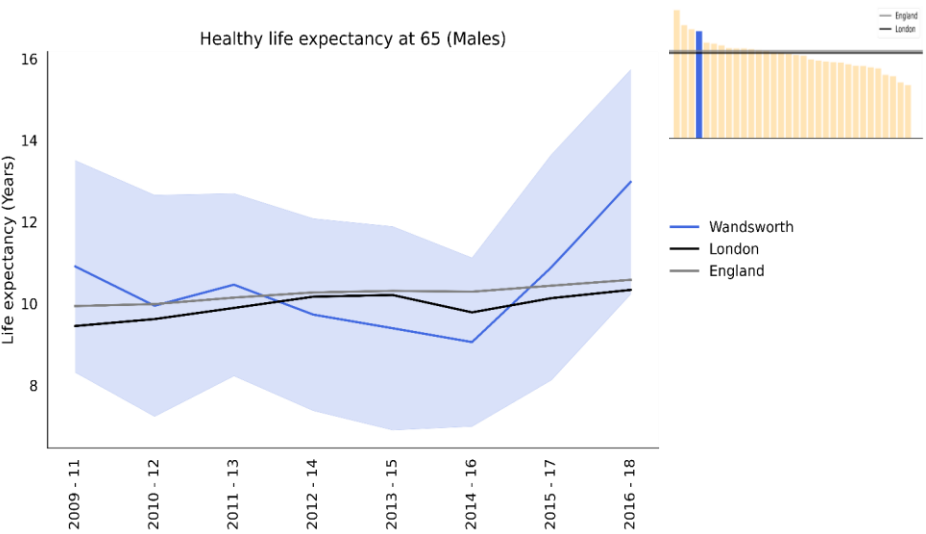


Wandsworth has a gap of 2.6 years in life expectancy at age 65 between males in the least deprived areas compared to those in the most deprived areas, the second lowest value in London. For females the gap of 3.1 years in life expectancy at age 65 between females in the least deprived areas compared to those in the most deprived areas, the 10th lowest in London.

Public Health



Healthy Life Expectancy at Age 65



Healthy life expectancy is the number of years of life spent in good health. Female healthy life expectancy is 20.8% lower from year 2009 – 11, in comparison with a 4.2% increase in England’s rate in the equivalent time period. Male healthy life expectancy is 19.0% higher from year 2009 – 11, in comparison with a 6.5% increase in England's rate in the equivalent time period.

Public Health



Main Causes of Morbidity and Mortality

Public Health



Morbidity in Older Adults

Conditions Linked to the Highest Number of Years of Life Lived with Disability (Ranked) in Wandsworth and London, 2019

Top 5 conditions accounting for greatest burden of disease (YLD rate per 100,000 population, % of total YLD)

Males and females aged 70+

Sex	Area name	1st	2 nd	3rd	4th	5th
Males	Wandsworth	Diabetes (2812, 10.4%)	Age-related hearing loss (2142, 7.9%)	COPD (2040, 7.6%)	Low back pain (1876, 7.0%)	Falls (1435, 5.3%)
	London	Diabetes (2782, 10.4%)	Age-related hearing loss (2178, 7.9%)	COPD (1992, 7.6%)	Low back pain (1886, 7.0%)	Falls (1332, 5.3%)
Females	Wandsworth	Low back pain (2780, 9.6%)	Diabetes (2354, 8.1%)	Age-related hearing loss (2217, 7.7%)	Falls (1995, 6.9%)	Osteoarthritis (1767, 6.1%)
	London	Low back pain (2780, 9.7%)	Diabetes (2384, 8.3%)	Age-related hearing loss (2279, 7.9%)	Falls (1882, 6.9%)	COPD (1726, 6.1%)

Years lived with disability (YLD) is a measure of morbidity that combines the prevalence of each disease with a rating of the severity of its symptoms (excluding death), to give an overall measure of the loss of quality of life.

Public Health



Mortality in Older Adults

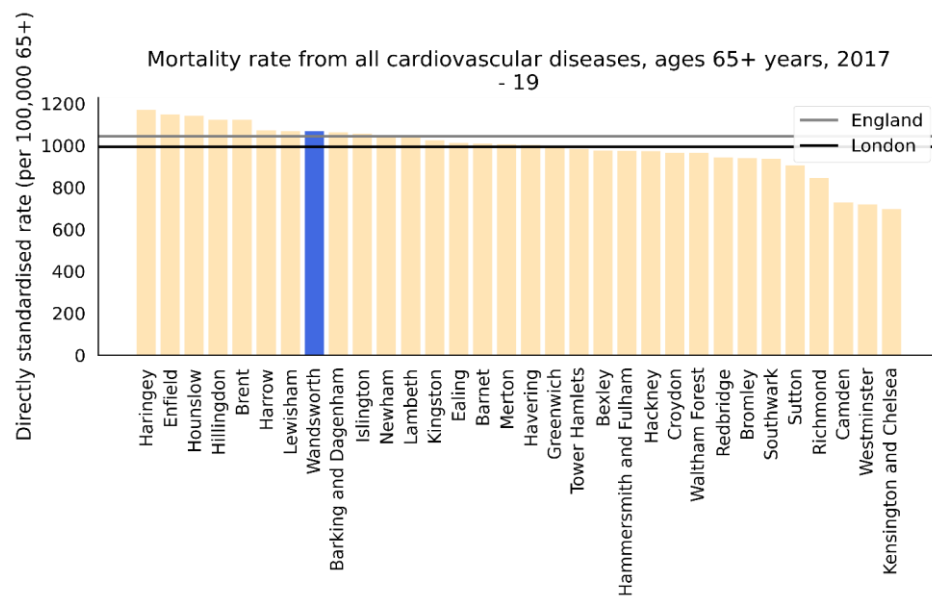
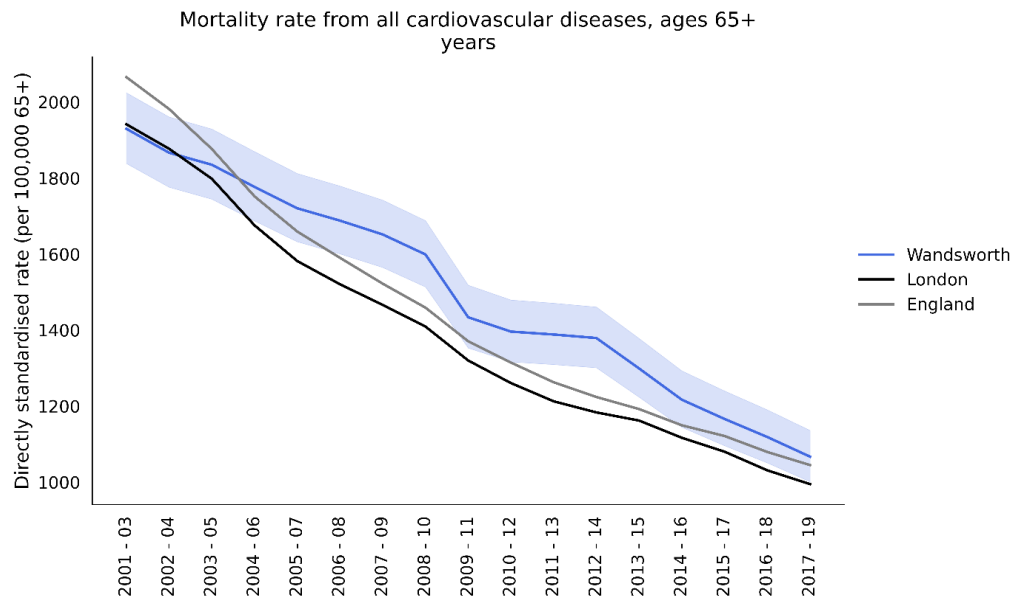
Cause of Mortality in Males and Females Aged 70 and over in Wandsworth, 2019

	Cause of death, 2019					
	Males and females aged 70+ (death rate per 100,000, % of total YLD)					
	1st	2 nd	3rd	4th	5th	
Wandsworth Males	Ischaemic Heart Disease (785, 16.1%)	COPD (419, 8.6%)	Lower respiratory infections (392, 8.0%)	Stroke (339, 6.9%)	Lung Cancer (315, 6.4%)	
London Males	Ischaemic Heart Disease (912, 16.6%)	COPD (453, 8.2%)	Lower respiratory infections (444, 8.1%)	Stroke (384, 7.0%)	Lung Cancer (362, 6.6%)	
Wandsworth Females	Ischaemic Heart Disease (672, 13.3%)	Lower respiratory infections (476, 9.4%)	Alzheimer's disease (447, 8.9%)	Stroke (435, 8.6%)	COPD (368, 7.3%)	
London Females	Ischaemic Heart Disease (664, 13.4%)	Lower respiratory infections (475, 9.6%)	Alzheimer's disease (473, 9.5%)	Stroke (447, 9.0%)	COPD (343, 6.9%)	

Public Health



Cardiovascular Mortality in People Aged 65+



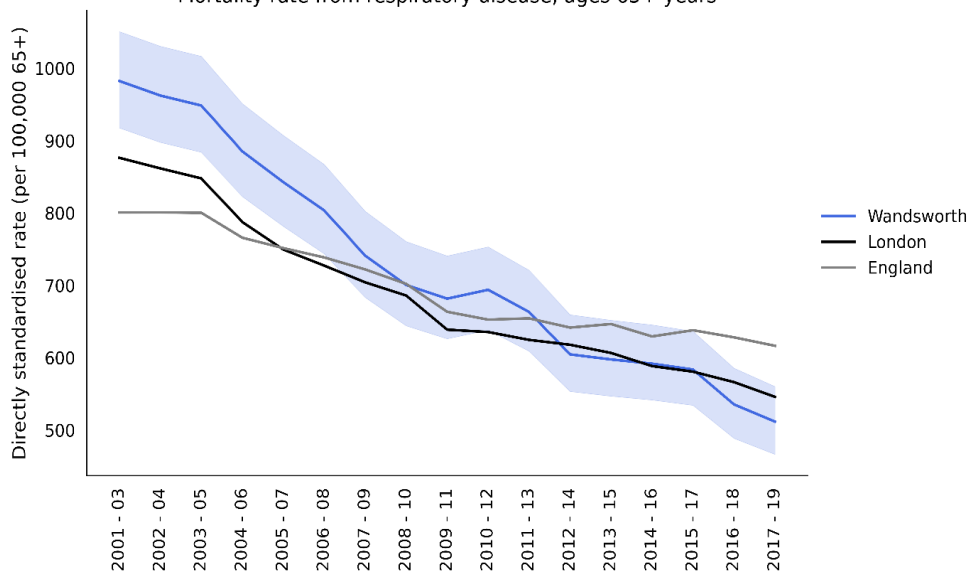
Wandsworth's latest (2017–19) cardiovascular mortality rate of people aged 65+ was 1067 deaths per 100,000 population (n=980) the 8th highest rate in London, which was 2% higher than the England average and 7% higher than the London average. The latest Borough figure was also 44.7% lower from year 2001 – 03, in comparison with a 49.4% decrease in England's rate in the equivalent time period.

Public Health



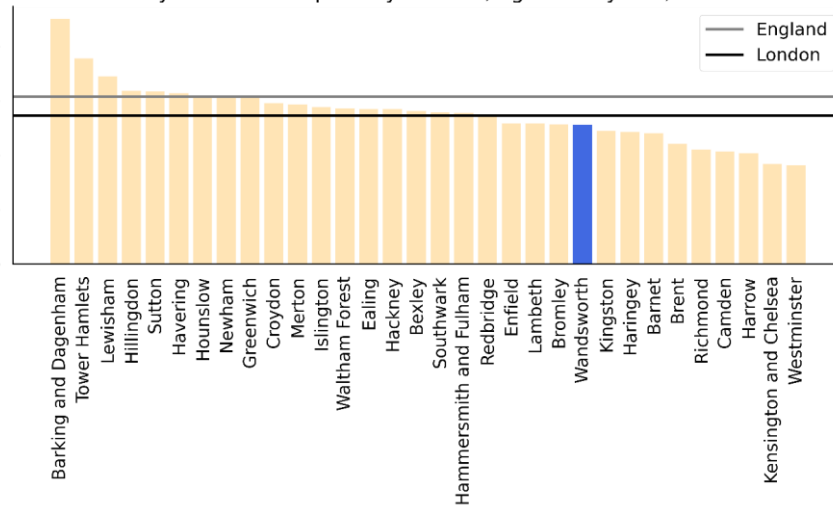
Respiratory Mortality in People Aged 65+

Mortality rate from respiratory disease, ages 65+ years



Directly standardised rate (per 100,000 65+)

Mortality rate from respiratory disease, ages 65+ years, 2017 - 19

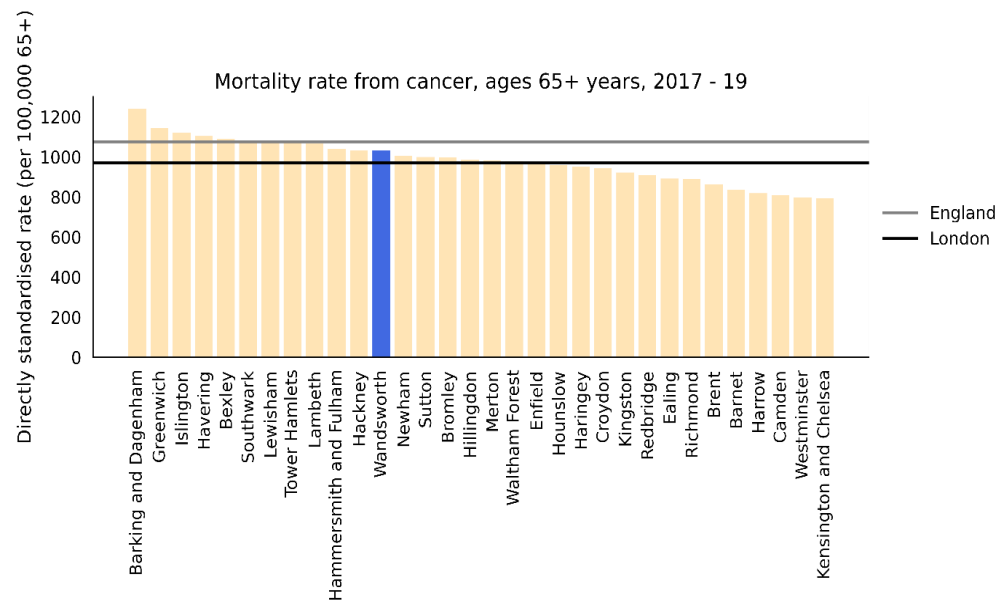
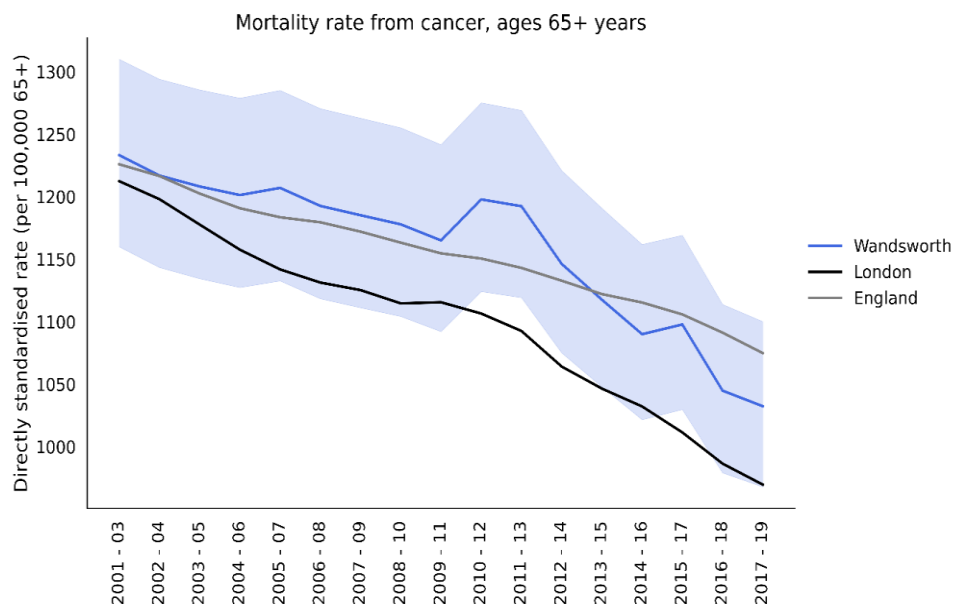


Wandsworth's latest (2017–19) respiratory mortality rate of people aged 65+ was 511 deaths per 100,000 population (n=470) the 10th lowest rate in London, which was 17.0% lower than the England average and 6.3% lower than the London average. The latest Borough figure was also 47.9% lower from year 2001–03, in comparison to 23.0% decrease in England's rate in the equivalent time period.

Public Health



Cancer Mortality in People Aged 65+

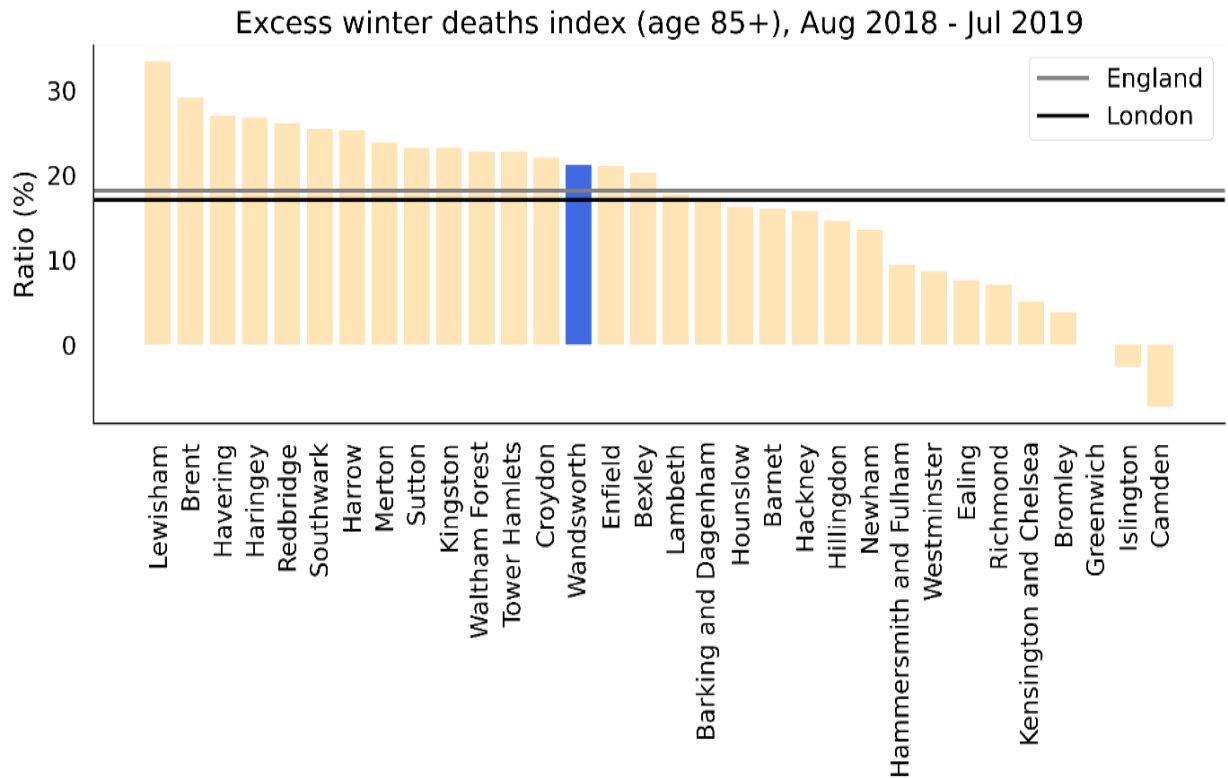


Wandsworth's latest (2017–19) cancer mortality rate of people aged 65+ was 1032 deaths per 100,000 population (n=956) the 12th highest rate in London, which was 4.0% lower than the England average and 6.5% higher than the London average. The latest Borough figure was also 16.3% lower from year 2001 – 03, in comparison with a 12.3% decrease in England's rate in the equivalent time period.

Public Health



Excess Winter Deaths



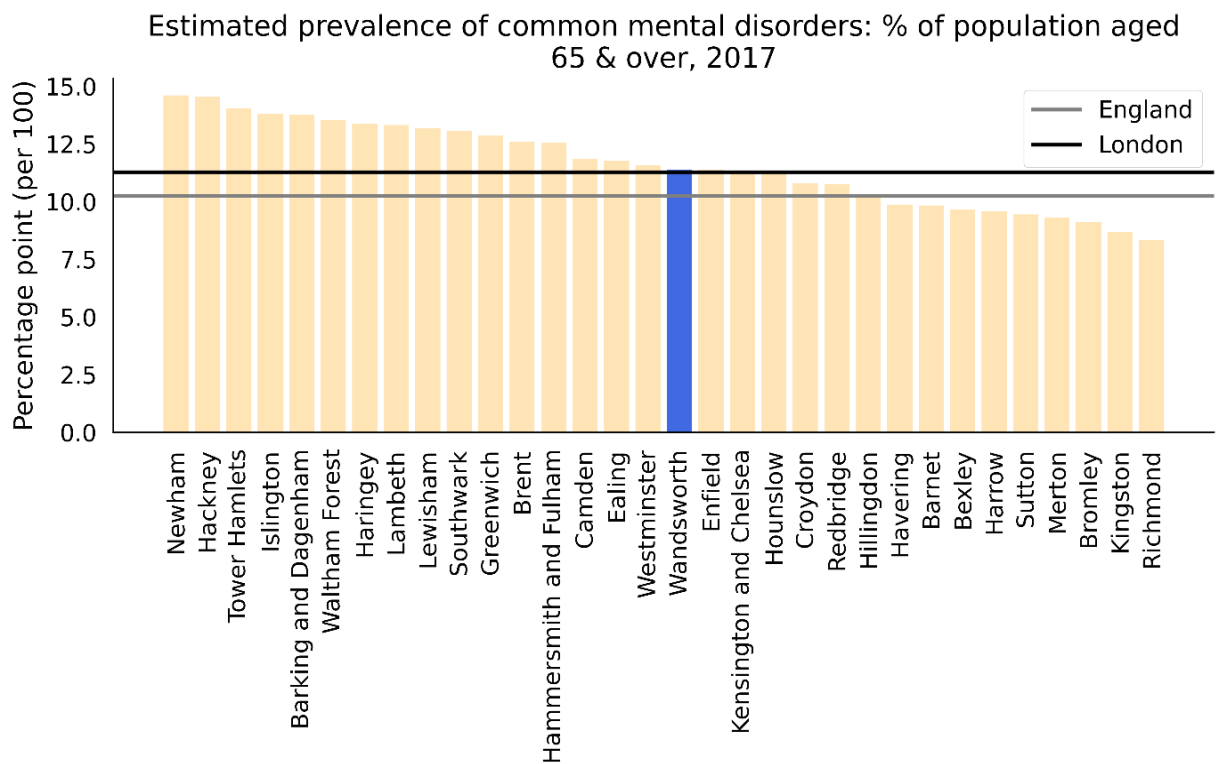
The number of excess winter deaths is linked to the outside temperature and the underlying level of disease in the population as well as other factors, such as how well-equipped people, and their environments, are to cope with the drop in temperature.

Wandsworth's latest excess winter deaths of people aged 85 and over was 21% (n=34) the 14th highest rate in London, which is 16% higher than the England average and 24% higher than the London average. The latest Borough figure was also 28% lower from year Aug 2001 - Jul 2002, in comparison with a 28% decrease in England's rate in the equivalent time period.

Public Health



Common Mental Disorders



The estimated prevalence of common mental disorders (CMD) in older people provides a valuable resource in the planning of preventative mental health interventions, such as psychological therapies. The indicator is designed to estimate local prevalence of CMD using national survey estimates for specific population cohorts and applying them to local demography.

Wandsworth's 2017 estimate of proportion of people aged 65+ with CMD was 11 per 100 (n=3474) the 16th lowest rate in London, which was 11% higher than the England average and 1% higher than the London average. No time trend information is available for the estimates.

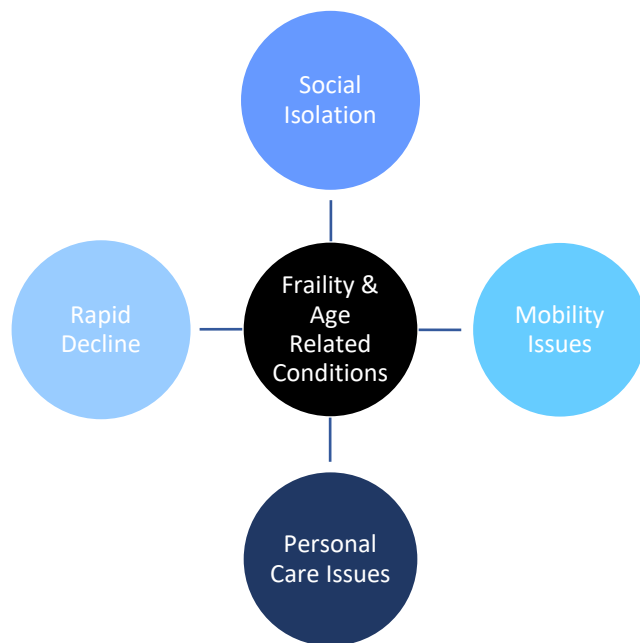
Falls, Frailty & Mobility

Public Health



Frailty

Diagram Demonstrating the Issues Caused by Frailty and Age-Related Conditions



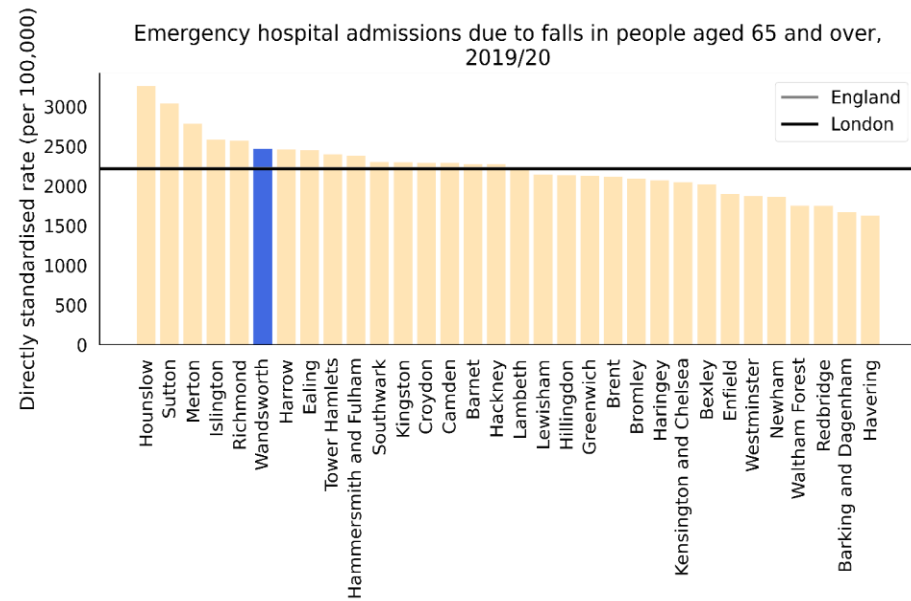
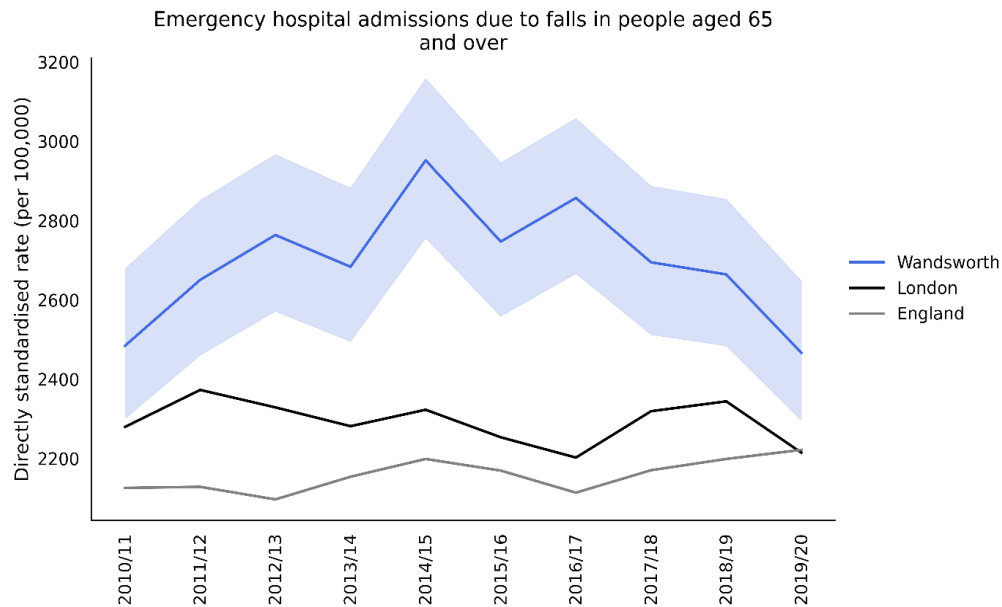
The ageing process presents a variety of challenges for older people from frailty, illnesses and age-related conditions, such as dementia. As a result, some older people may have needs that require support from Social Care Services, as they are unable to cope with basic self-care tasks.

Frailty is a state of low energy, slower walking speeds and poor strength. It is not an inevitable consequence of the ageing process, however prevalence rates for frailty do increase with age. Women are also more likely to suffer from frailty in comparison to men. The severity of frailty has also been found to increase dramatically in the year prior to death

Public Health



Falls



A fall is defined as an event which causes a person to, unintentionally, rest on the ground or lower level, and is not a result of a major intrinsic event or overwhelming hazard.

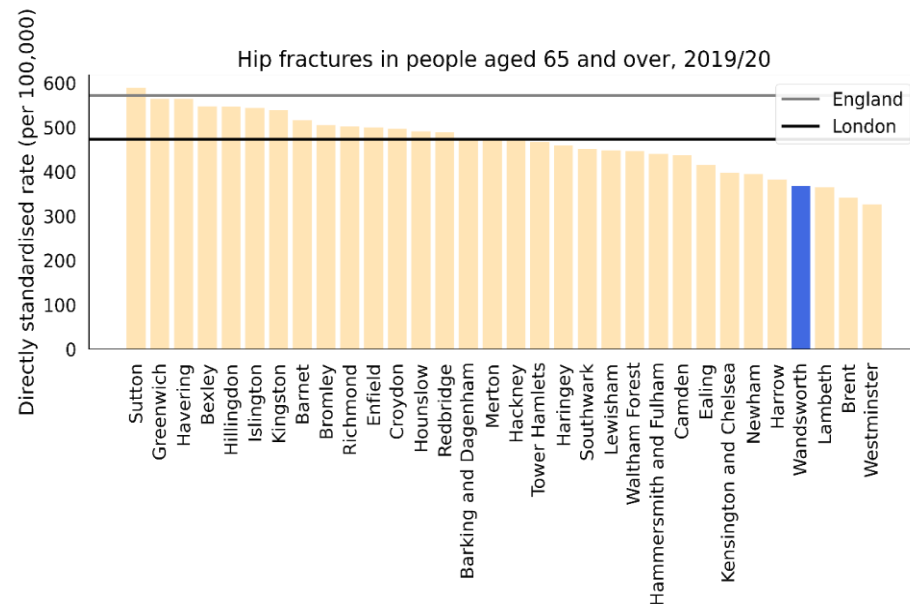
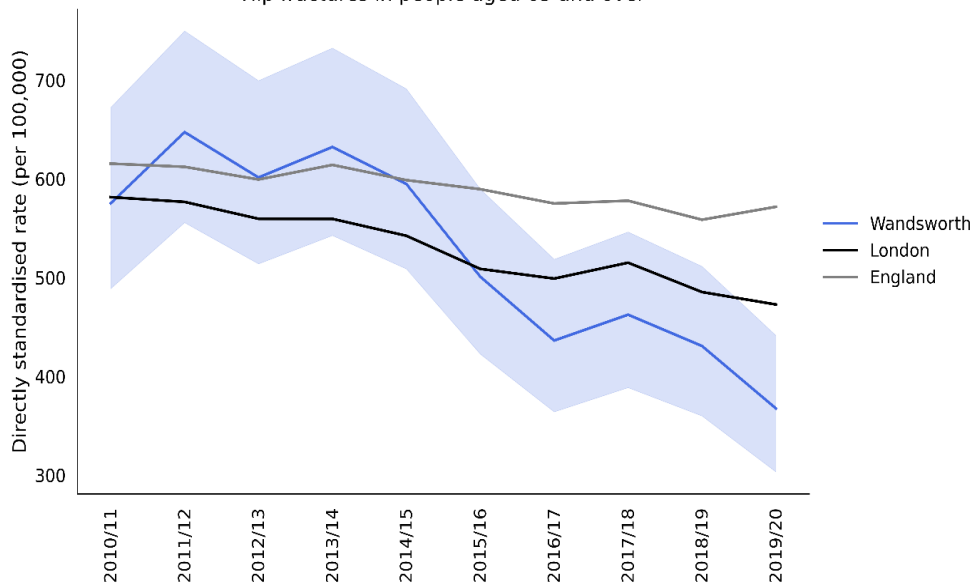
Wandsworth's latest rate of emergency admissions due to falls in people aged 65+ was 2,467 admissions per 100,000 (n=775) the 6th highest rate in London, which was 11.0% higher than the England average and 11.4% higher than the London average.

Public Health



Hip Fractures

Hip fractures in people aged 65 and over



Hip fracture, in many cases a result of a fall, affects mobility of older people – only around 30% of sufferers return to the levels of independence prior to the fracture and one in three ends up leaving their own home and moving to long-term care.

Wandsworth's latest rate of hip fractures in people aged 65+ was 368/100,000 (n=165) , 4th lowest rate in London, which was 35.7% lower than the England average and 22.3% lower than the London average .

Public Health



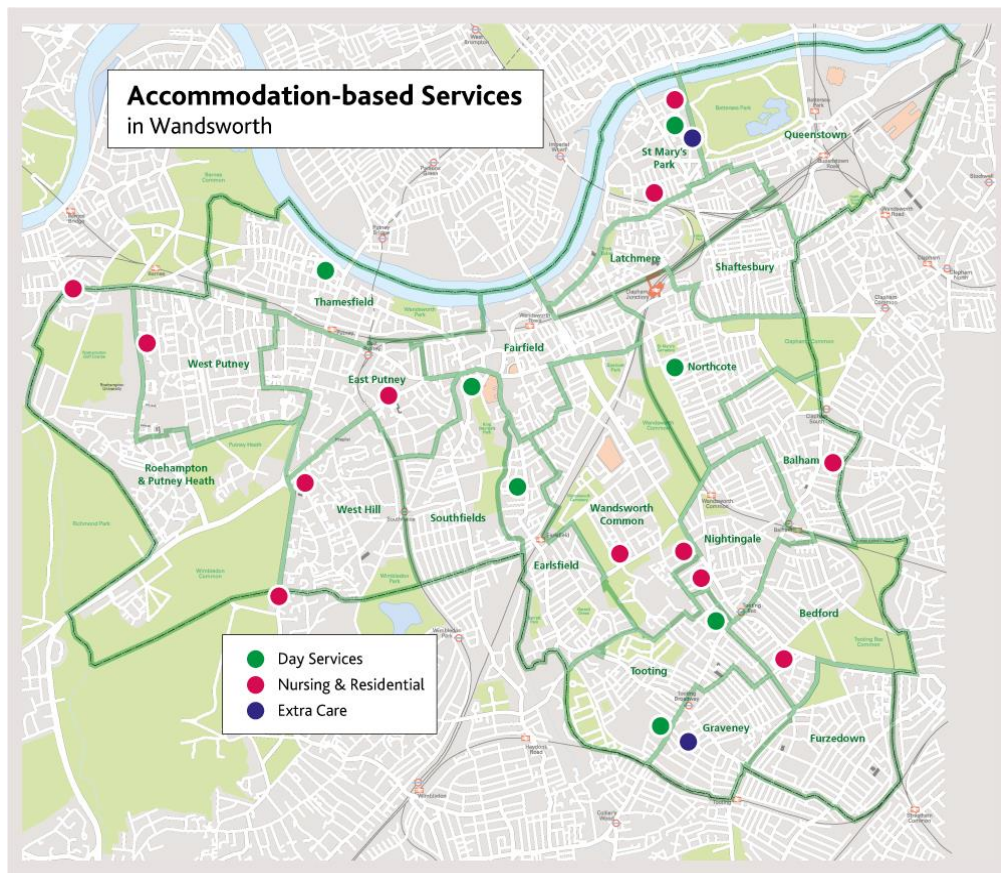
Care and Support Services for Older People

Public Health



Care and Support Services for Older People

Map of Accommodation-based Services in Wandsworth



Individuals with higher levels of need may receive more intensive accommodation-based services, which fall into three main types of services:

- Extra Care
- Residential Care
- Nursing Homes.

In Wandsworth, there are 8 commissioned residential homes, 16 commissioned nursing homes, 3 commissioned extra care schemes and 2 commissioned day services.

Public Health



Adult Social Care Outcomes

Public Health



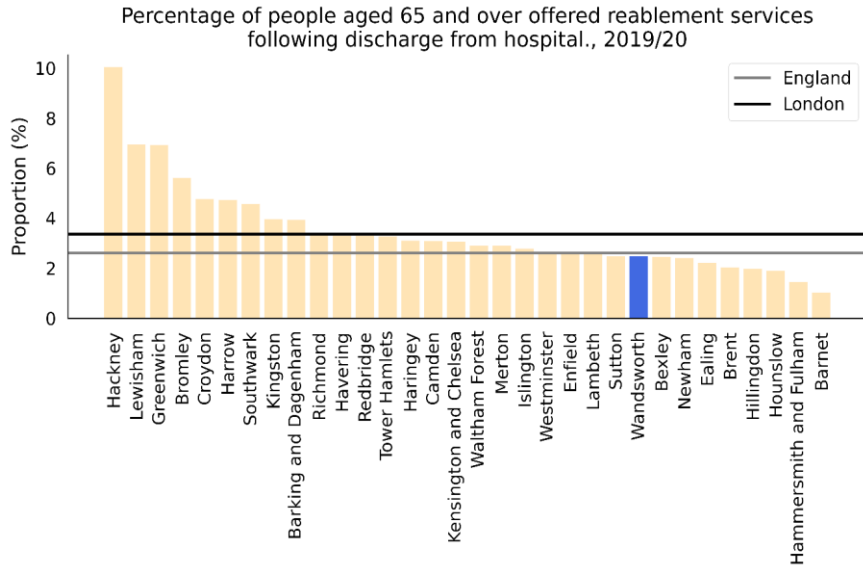
Adult Social Care Outcome Framework

The Adult Social Care Outcomes Framework (ASCOF) measures how well care and support services achieve the outcomes relevant to the service users and their carers. The ASCOF is used both locally and nationally to set priorities for care and support and measure progress against a set of social care indicators. This section reports Wandsworth's performance on ASCOF indicators, including the latest ASC survey results, for service users and carers aged 65 and over.

Public Health

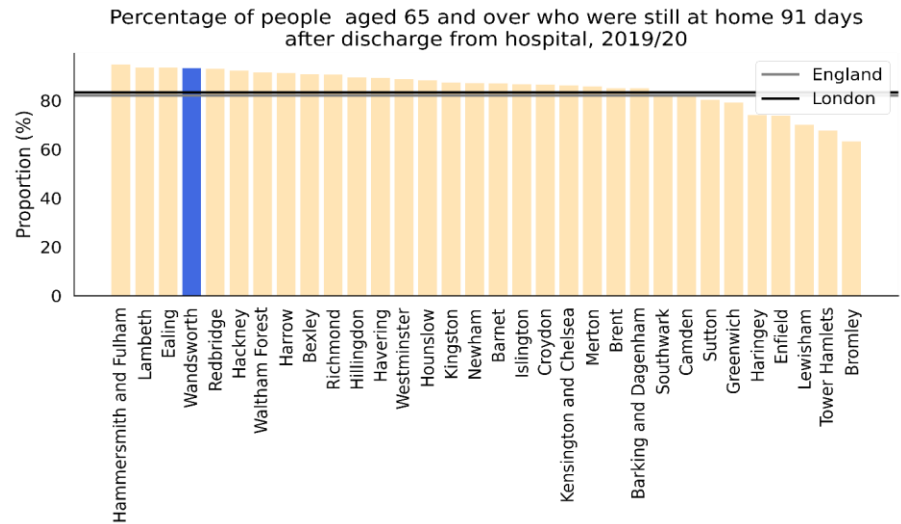


Reablement Services



Wandsworth's latest percentage of people aged 65 and over who were offered reablement services and were still at home 91 days after discharge from hospital was 93% (n=124) the 4th highest rate in London, which was 13.7% higher than the England average and 11.8% higher than the London average.

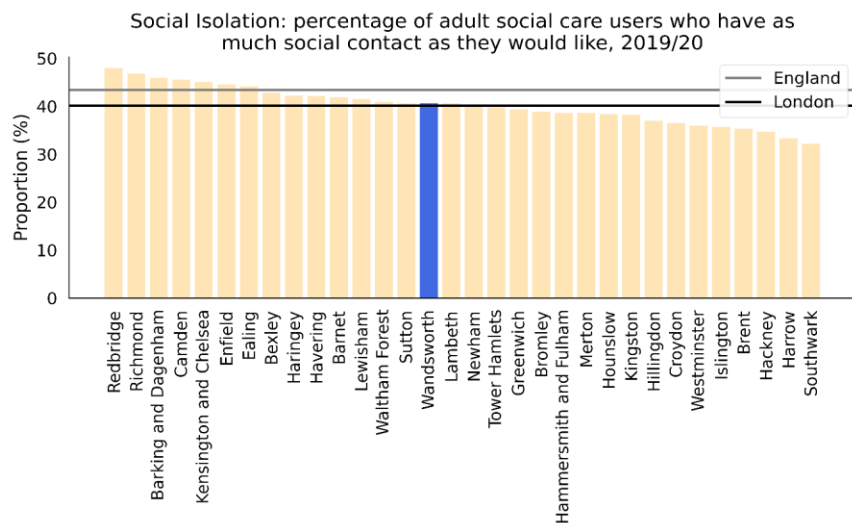
In 2019/20, Wandsworth's percentage of people aged 65 and over were offered reablement services following discharge from hospital was 3% (n=133) the 9th lowest rate in London, which was 5.3% lower than the England average and 26.7% lower than the London average.



Public Health

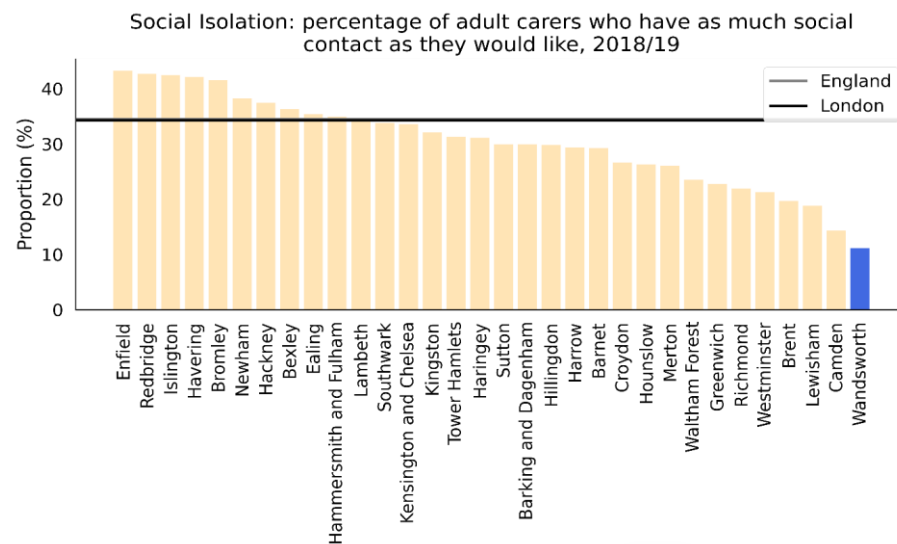


Social Isolation



Social Isolation: the percentage of adult carers who have as much social contact as they would like was 11.1% (n=10) the lowest rate in London, which was 67.8% lower than the England average, and 67.6% lower than the London average.

In 2019/20 in Wandsworth the percentage of adult social care users who have as much social contact as they would like was 41% (n=685) the 15th highest rate in London, which was 6.5% lower than the England average, and 1.2% higher than the London average.



Public Health

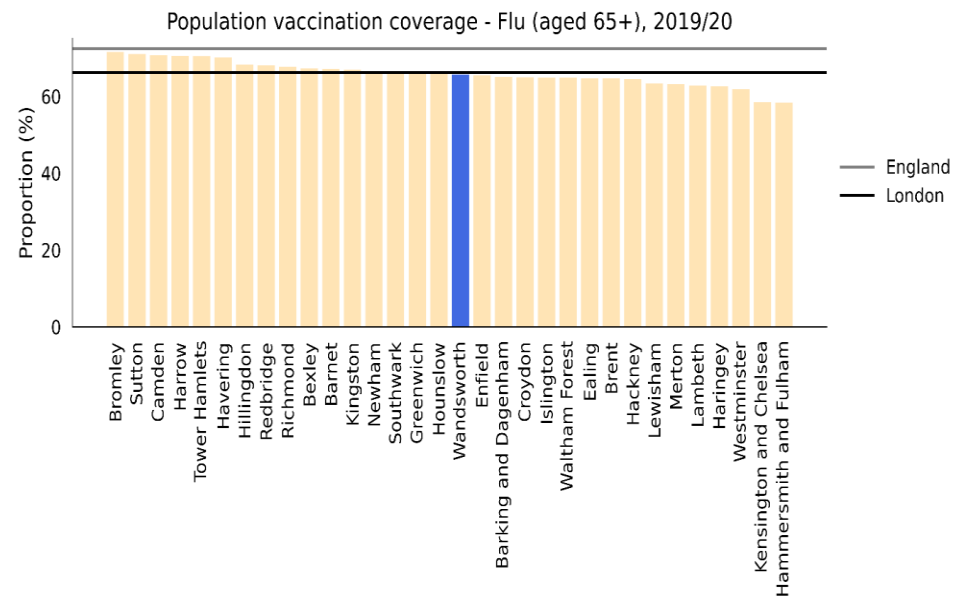
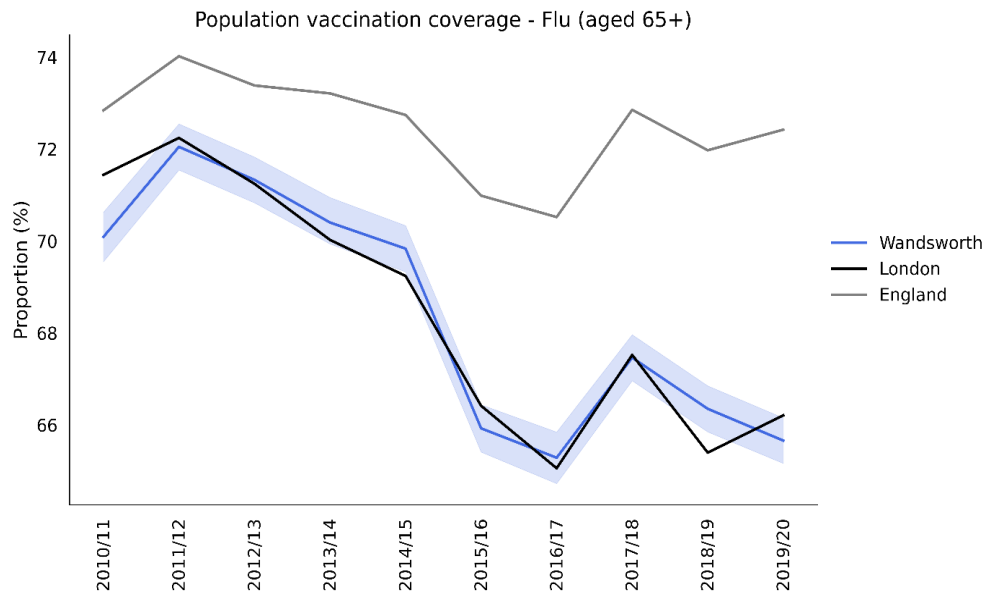


Vaccinations

Public Health



Seasonal Flu

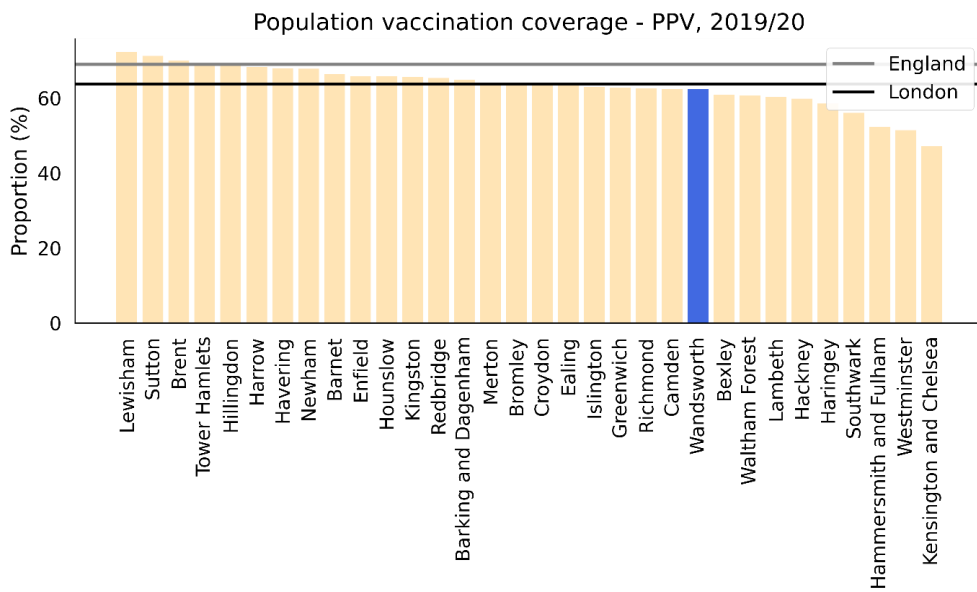
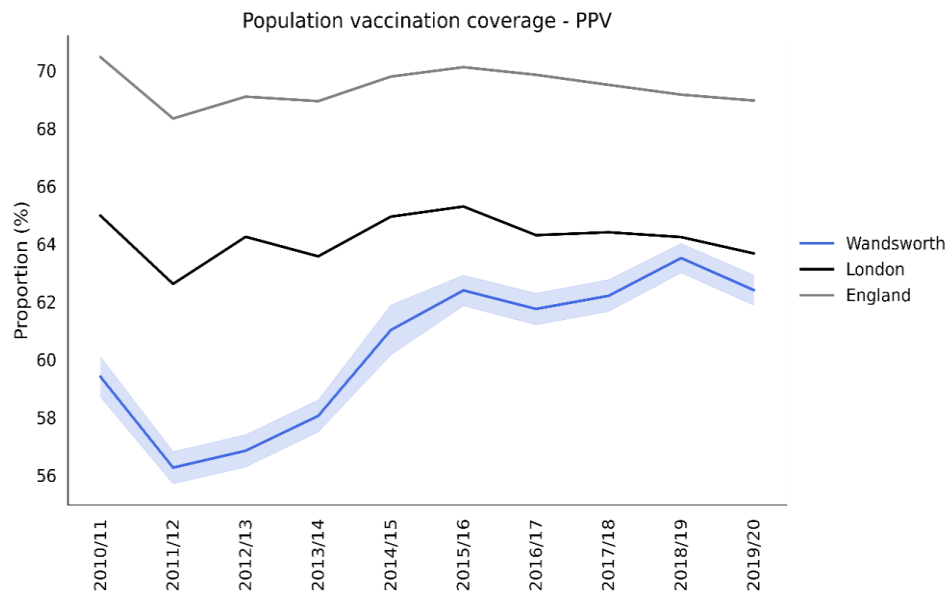


In 2019/20, Wandsworth's flu vaccination coverage among people aged 65 and over was 66% (n=23248) the 16th lowest rate in London, which was 9.3% lower than the England average, and 0.8% lower than the London average. The latest Borough figure was also 6.3% lower from year 2010/11, in comparison with a 0.6% decrease in England's rate in the equivalent time period.

Public Health



Pneumococcal Polysaccharide Vaccine (PPV)



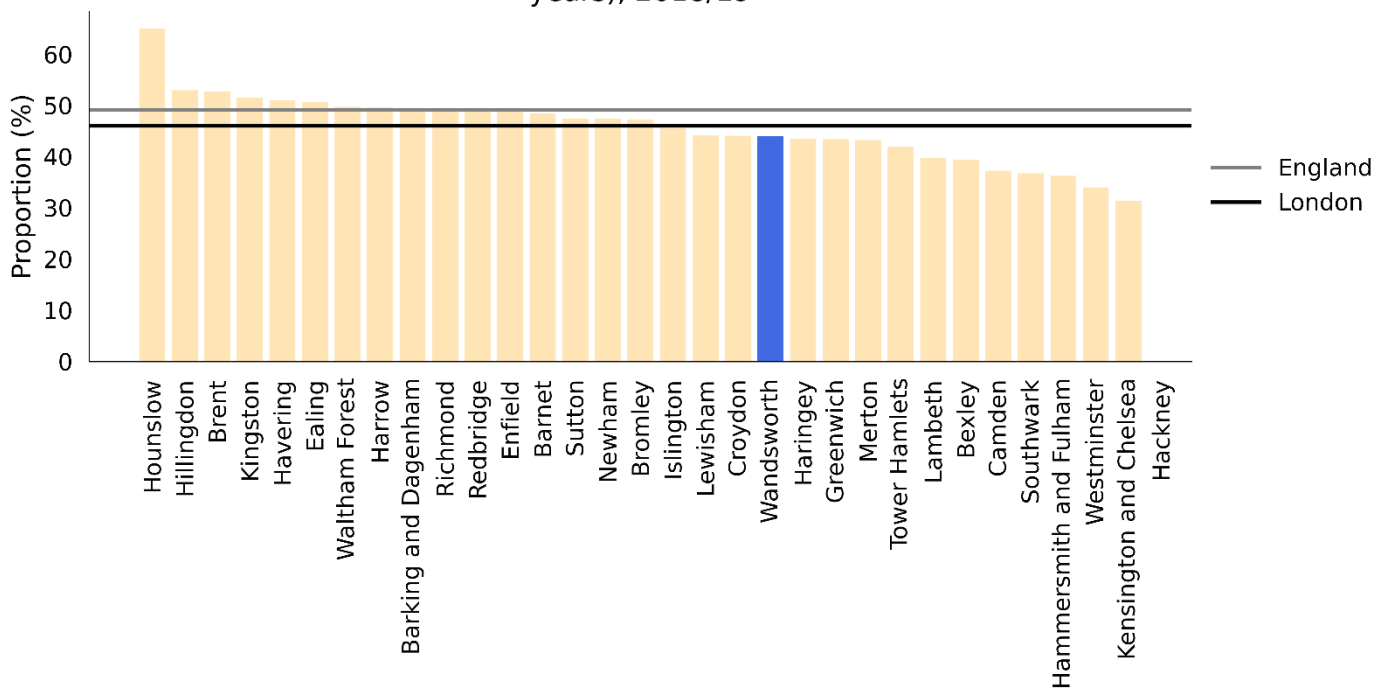
Wandsworth's latest PPV vaccination coverage in people aged 65+ was 62% (n=21398), the 12th lowest rate in London, which was 9.4% lower than the England average, and 1.8% lower than the London average. The latest Borough figure was also 16.2% lower from year 2010/11, in comparison with a 2.1% decrease in England's rate in the equivalent time period.

Public Health



Shingles Vaccine

Population vaccination coverage – Shingles vaccination coverage (71 years), 2018/19



In 2018/19, shingles vaccination coverage in people aged 71 in Wandsworth was 44% (n=845) the 12th lowest rate in London, which was 10.5% lower than the England average, and 4.4% lower than the London average.

Dementia Prevention & Care

Public Health



Dementia

Dementia Sub-types

Dementia sub-types

- **Alzheimer's disease:** The most common form of dementia, accounting for approximately 60% of all dementia cases. Alzheimer's typically starts with impairment of episodic memory before affecting other brain functions.
- **Vascular dementia:** The second most common cause of dementia, accounting for approximately 20% of cases of dementia in the UK. Vascular dementia typically presents with a stepwise deterioration in brain function, occasionally with localised weakness or reduction in vision.
- **Dementia with Lewy bodies (DLB):** The third most common form of dementia, it accounts for approximately 15% of dementia cases. DLB is often associated with delusions, hallucinations and transient loss of consciousness. Occasionally DLB can cause difficulty mobilizing.
- **Frontotemporal dementia (FTD):** <5% of cases of dementia are due to FTD in the UK. FTD is associated with gradual development of personality change and behavioural disturbance.
- **Other:** There are other, less common, forms of dementia.

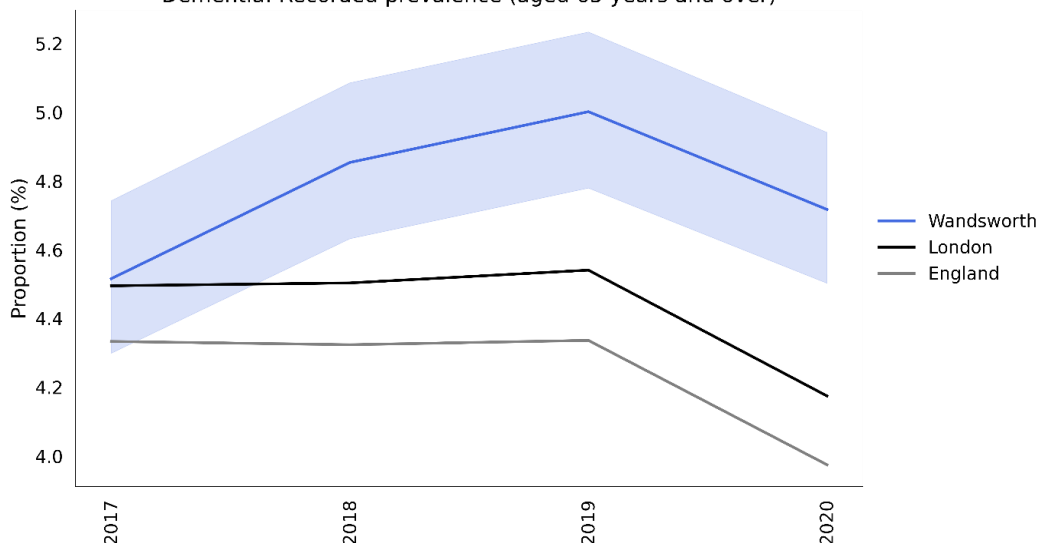
Dementia is an umbrella term used to describe a range of progressive neurological disorders (conditions that affect the brain). Although there are many subtypes of dementia, the five most common are: Alzheimer's disease, vascular dementia, dementia with Lewy bodies, frontotemporal dementia, and mixed dementia

Public Health

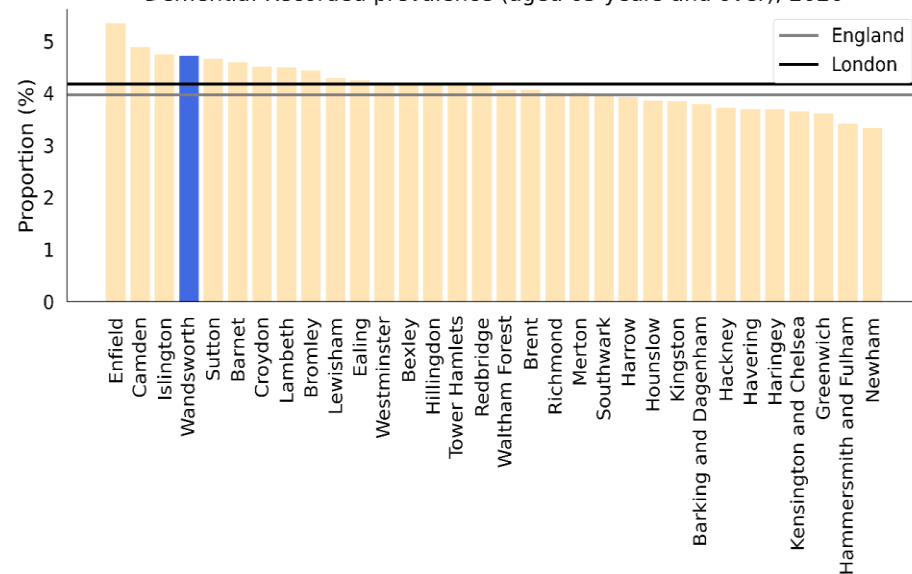


Dementia Prevalence

Dementia: Recorded prevalence (aged 65 years and over)



Dementia: Recorded prevalence (aged 65 years and over), 2020



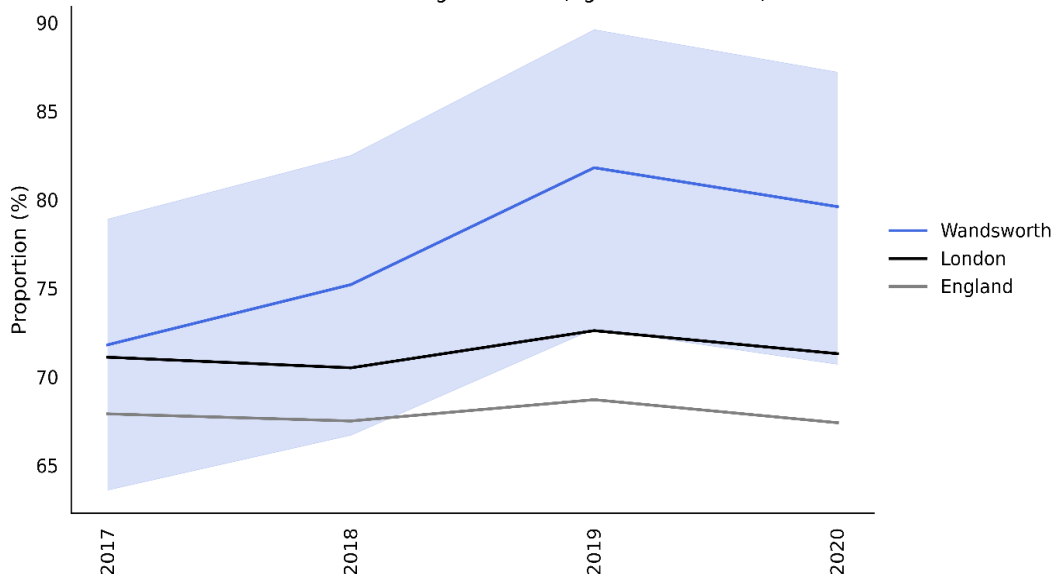
In 2020 Wandsworth's recorded prevalence of dementia in people aged 65+ was 5%, the 4th highest rate in London, which was 18.7% higher than the England average and 13.0% higher than the London average. The latest Borough figure was also 4.5% higher from year 2017, in comparison with a 8.3% decrease in England's rate in the equivalent time period.

Public Health

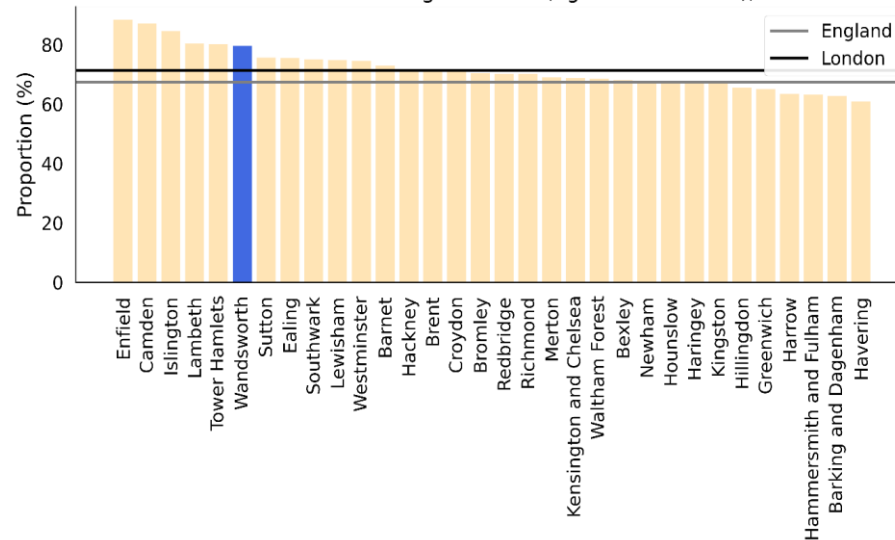


Dementia Diagnosis Rate

Estimated dementia diagnosis rate (aged 65 and over)



Estimated dementia diagnosis rate (aged 65 and over), 2020

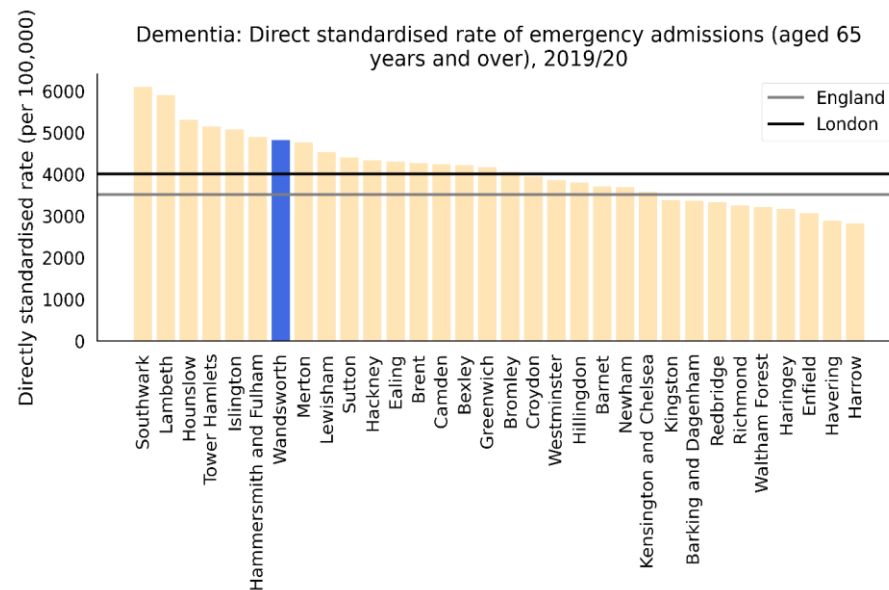
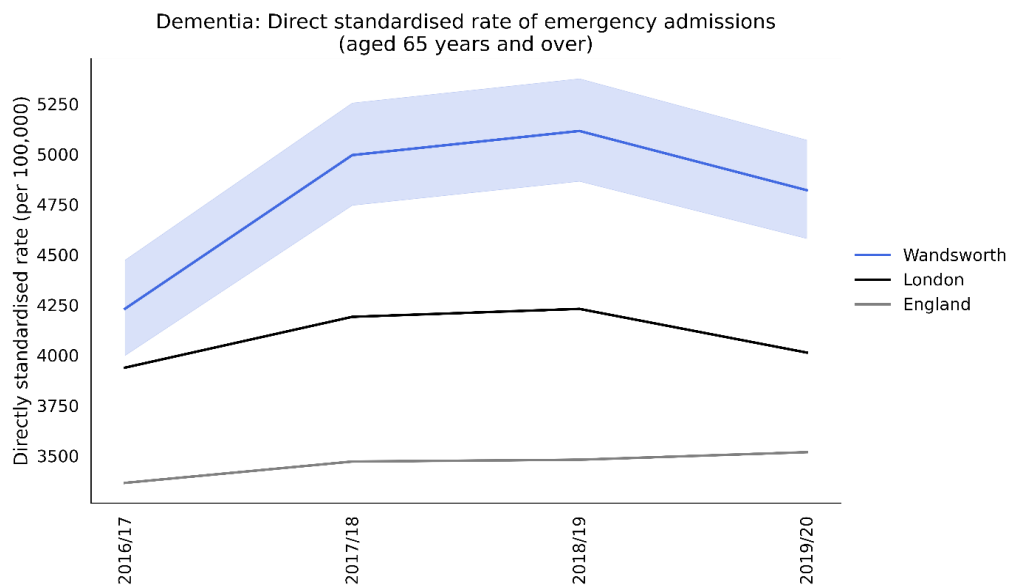


Based on dementia prevalence estimates, Wandsworth’s health services are identifying and diagnosing 79.6% of the estimated cases. This is the 6th highest rate in London which was 18.1% higher than the England average and 11.6% higher than the London average. The latest Borough figure was also 10.9% higher from year 2017, in comparison with a 0.7% decrease in England's rate in the equivalent time period.

Public Health



Emergency Admissions for Dementia

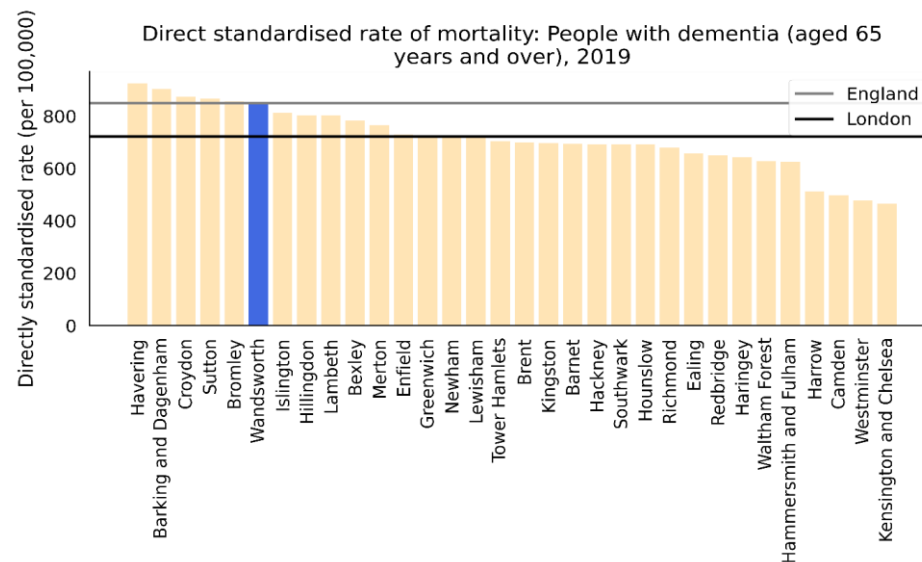
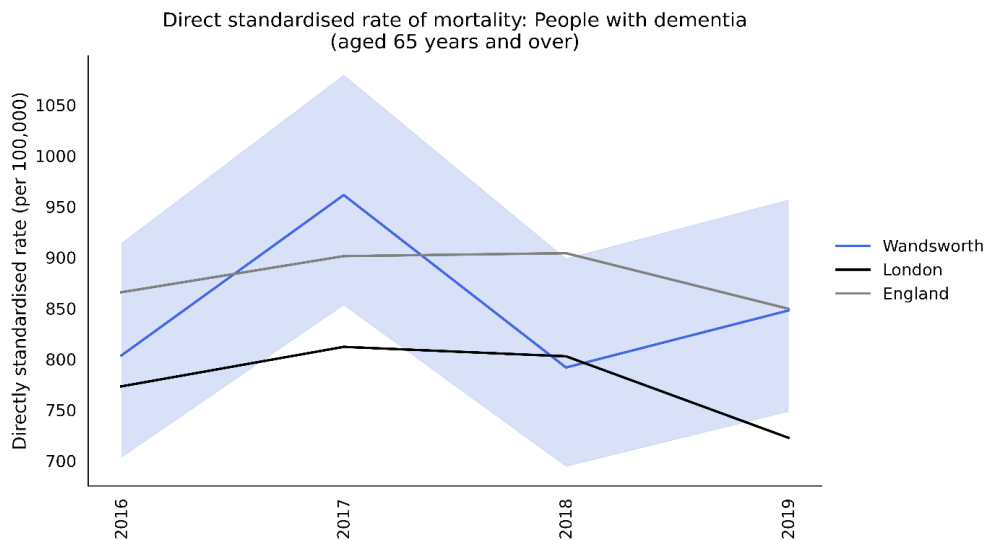


Wandsworth's latest rate (2019/20) of emergency admissions of people aged 65+ diagnosed with dementia was 4820/100,000 (n=1515) the 7th highest rate in London which was 37% higher than the England average and 20% higher than the London average. The latest Borough figure was also 14% higher from year 2016/17, in comparison with a 5% increase in England's rate in the equivalent time period. The rate has dropped from the previous year.

Public Health



Dementia Mortality



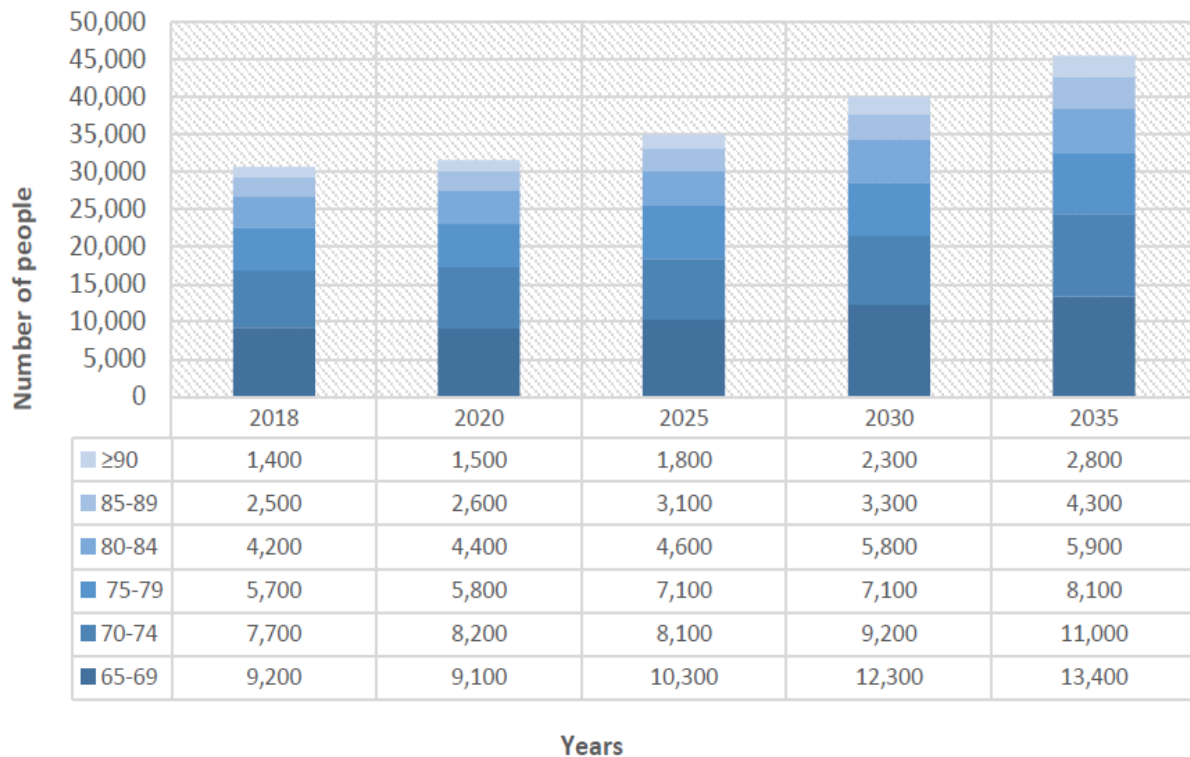
Wandsworth's latest directly standardised mortality rate of people aged 65+ suffering from dementia was 847.6. This is 6th highest rate in London, 0.2% lower than the England average and 17.3% higher than the London average. The latest Borough figure was also 5.5% higher from year 2016, in comparison with a 1.9% decrease in England's rate in the equivalent time period.

Public Health



Dementia Age Distribution

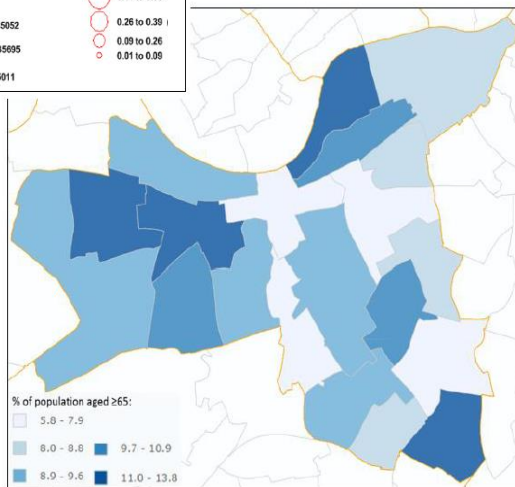
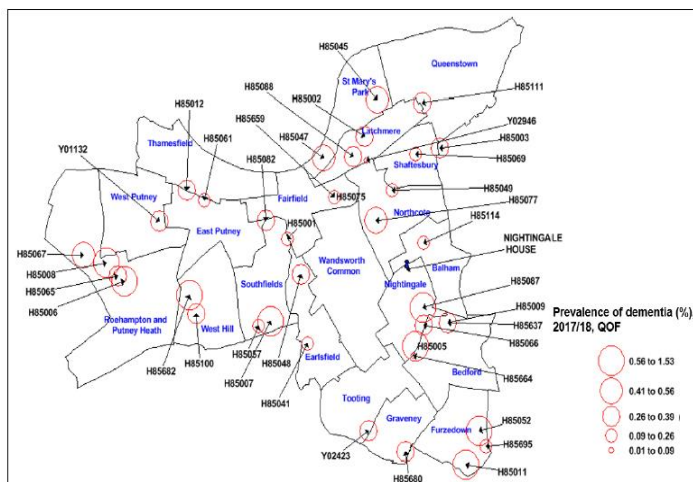
Predicted Age Distribution Amongst People Aged ≥65 in Wandsworth (2018–2035)



Age remains as the single biggest and non-modifiable risk factor for dementia with a person’s risk doubling approximately every 5 years above the age of 65. In Wandsworth there are currently estimated to be 30,744 residents ≥65, accounting for 10% of the total Borough population. It is estimated that this number is to increase by 87% to 57,622 residents by 2050.

Dementia Age Distribution

Dementia Prevalence Geographic Variation Data



- Wandsworth's recorded prevalence of dementia in people aged 65+ was 5%, the 4th highest rate in London
- Wandsworth's health services are identifying and diagnosing 79.6% of the estimated cases. This is the 6th highest rate in London
- Generally, dementia prevalence is higher in southern and western Wards of the Borough, reflecting the higher proportion of ≥65 residents who live in those areas.
- Nightingale and Furzedown in the South, and West Putney and Roehampton and Putney Heath in the West all having relatively high prevalence rates. Nightingale has the highest prevalence of dementia out of all London wards at 1.5%, which is linked to having a number of care homes located in the area
- Wandsworth's latest rate (2019/20) of emergency admissions of people aged 65+ diagnosed with Dementia was 4820/100,000 (n=1515) the 7th highest rate in London.

Public Health



End of Life Care

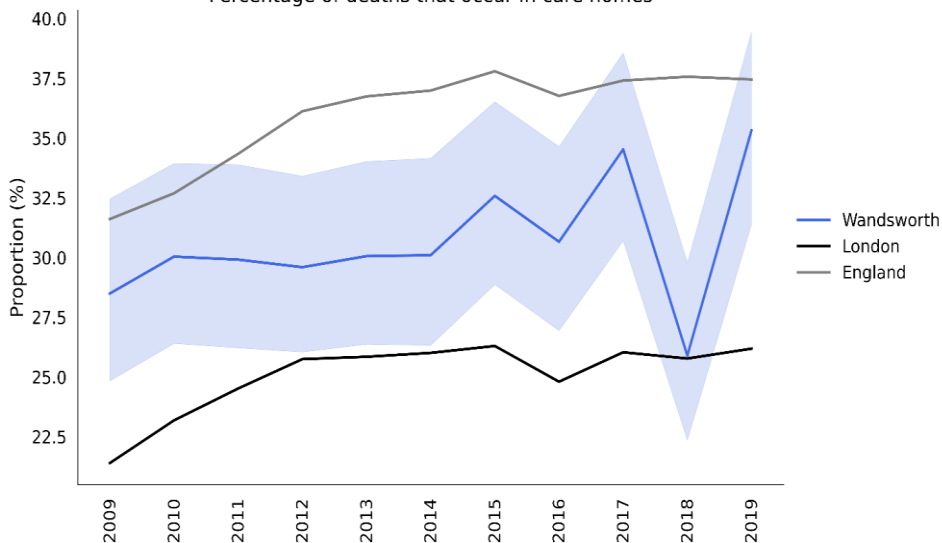
Public Health



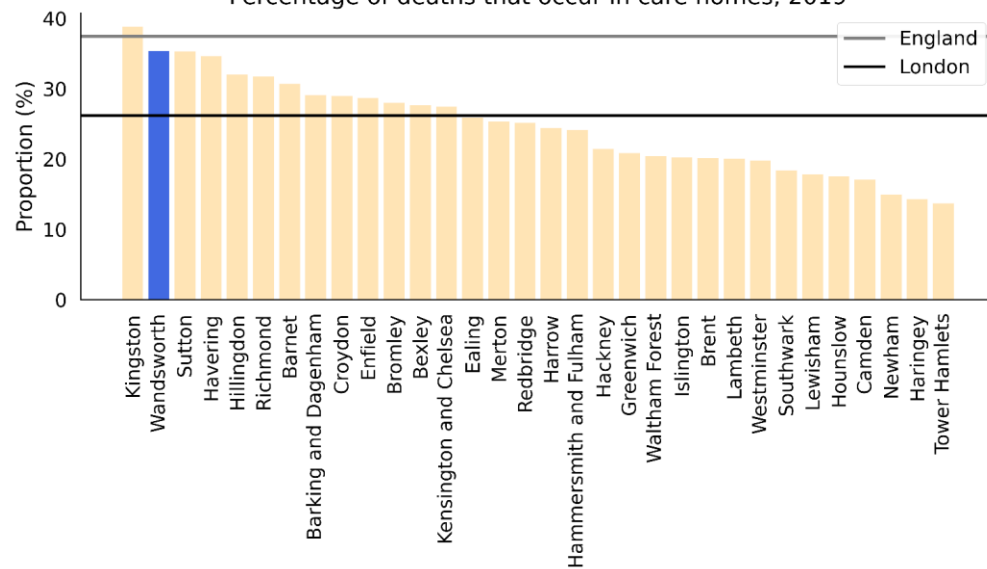
Care Home Deaths

Percentage of Care Home Deaths Amongst 85+ Population

Percentage of deaths that occur in care homes



Percentage of deaths that occur in care homes, 2019



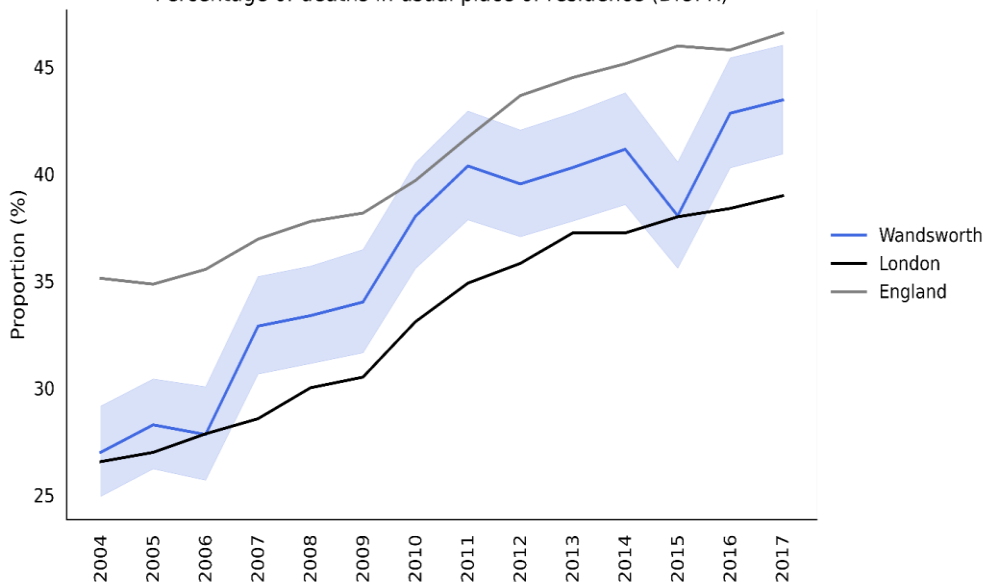
Wandsworth has a higher percentage of care home deaths in people over 85 when compared to the London average, and when compared to the average across South West London. Wandsworth's latest proportion of deaths that occur at home was 35/100 (n=190) the 2nd highest rate in London, which was 5.7% lower than the England average, and 34.9% higher than the London average. The latest Borough figure was also 24.0% higher from year 2009, in comparison with a 18.5% increase in England's rate in the equivalent time period.

Public Health

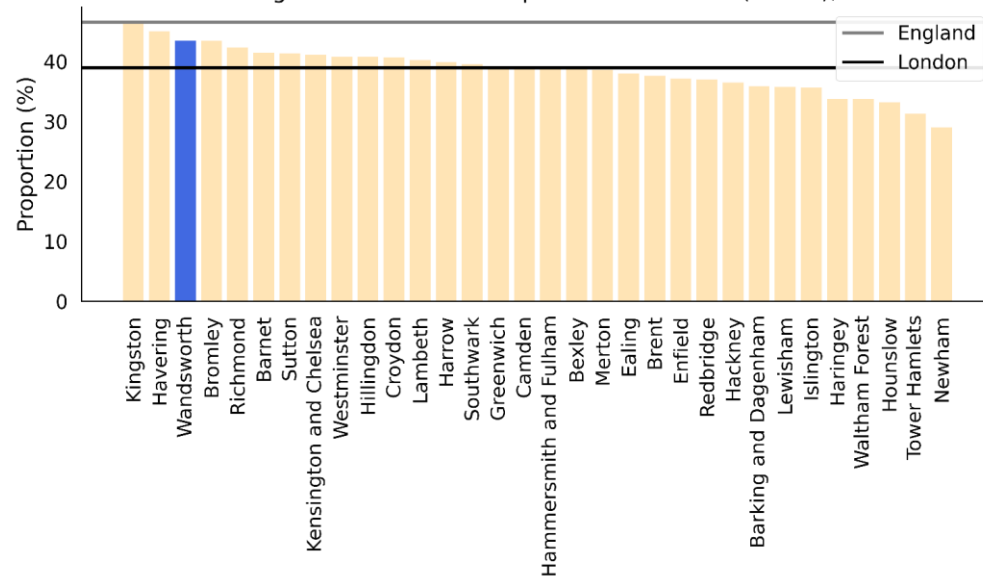


Deaths in Usual Place of Residence

Percentage of deaths in usual place of residence (DiUPR)



Percentage of deaths in usual place of residence (DiUPR), 2017



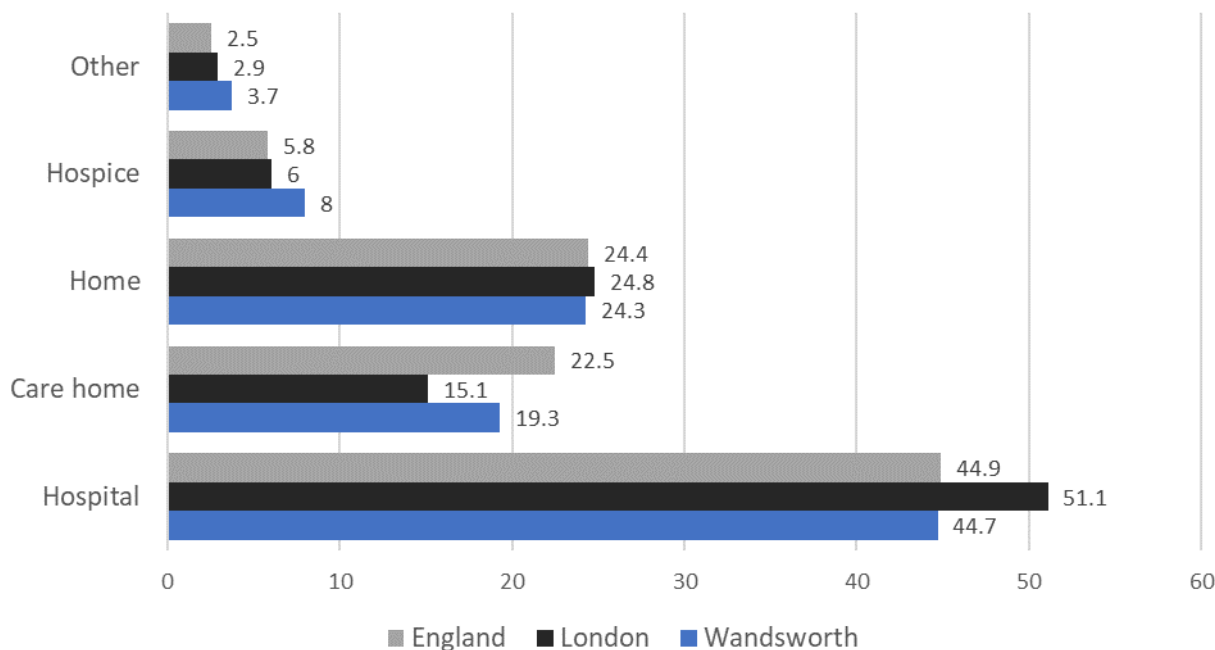
Wandsworth's percentage of deaths in usual place of residence (DiUPR) in 2017 was 43 (n=633) the 3rd highest rate in London, which was 6.7% lower than the England average and 11.5% higher than the London average. The latest Borough figure was also 61.0% higher from year 2004, in comparison with a 32.6% increase in England's rate in the equivalent time period.

Public Health



Place of Death

Places of death (% of total), 2019



Despite the rising trend in percentage of people dying in their usual residence (either their home or their care home), more Wandsworth's residents die in hospitals. 43% die in home or care home vs. 44.7% of residents dying in hospitals.

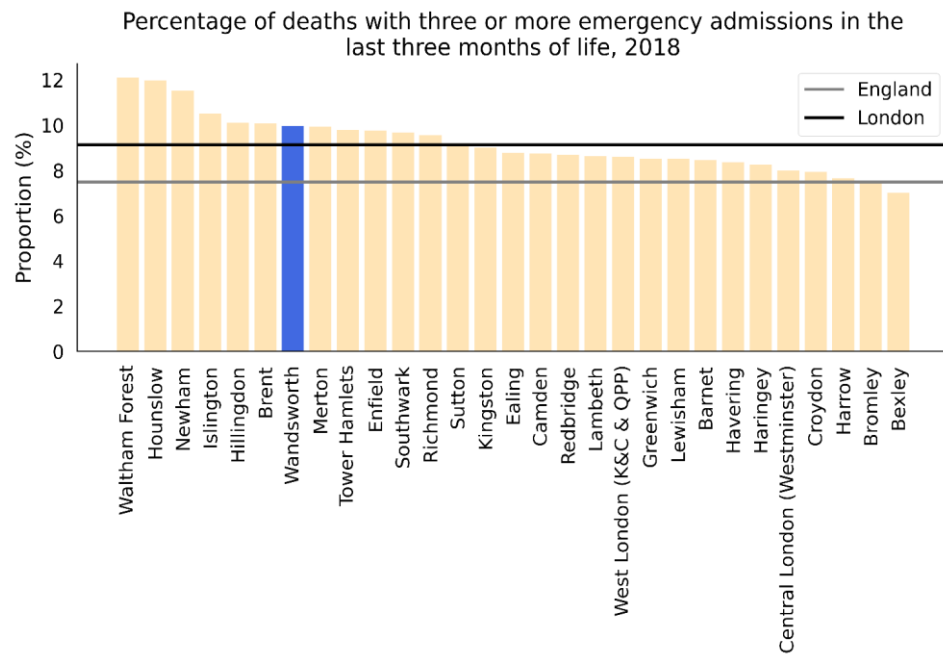
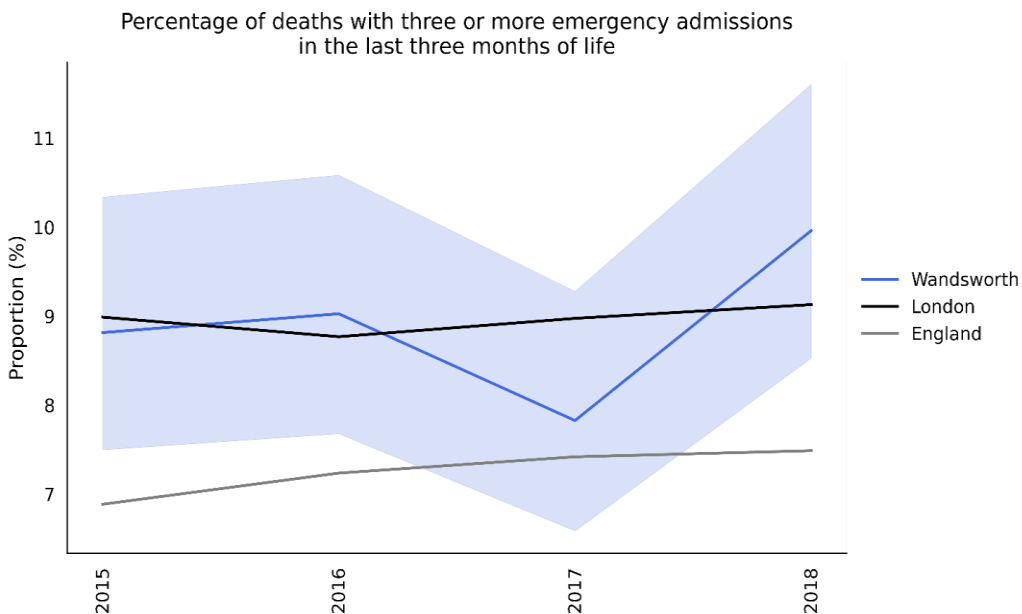
By comparison, the proportions in England have already reversed, 46.9% and 44.9% respectively. London's proportions are as follows: 39.9% dying in their usual residence whilst 51.1% of Londoners died in hospitals.

Public Health



Hospital Admissions at End of Life

Percentage of Deaths with 3+ Emergency Admissions in Final 90 Days of Life – CCG data



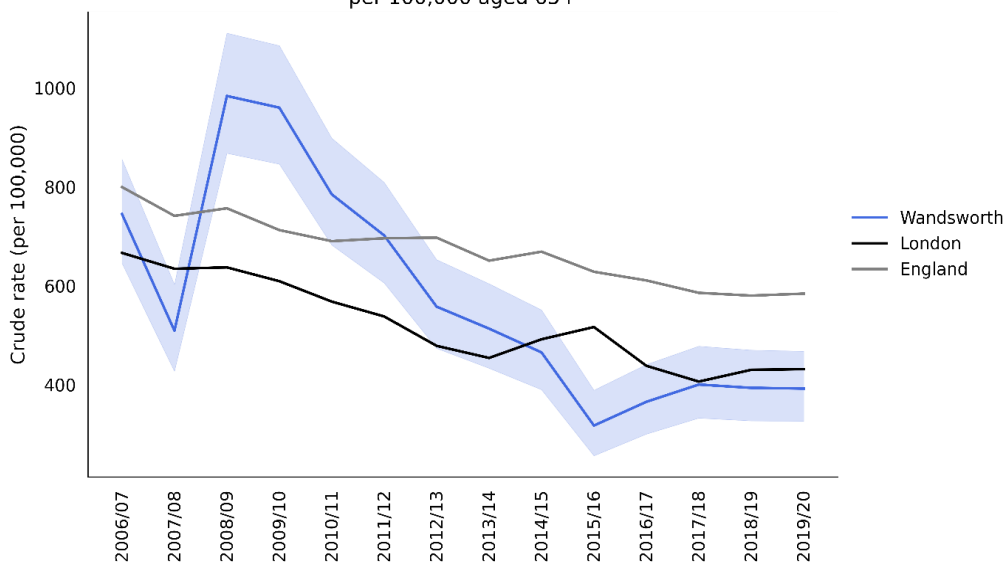
Wandsworth's latest proportion of deaths in people with three or more emergency admissions in the last three months of life was 10% . This was 7th highest in London, which was 33.1% higher than the England average and 9.1% higher than the London average. The latest Wandsworth's figure was also 13.0% higher from year 2015, in comparison with a 8.8% increase in England's rate in the equivalent time period.

Public Health

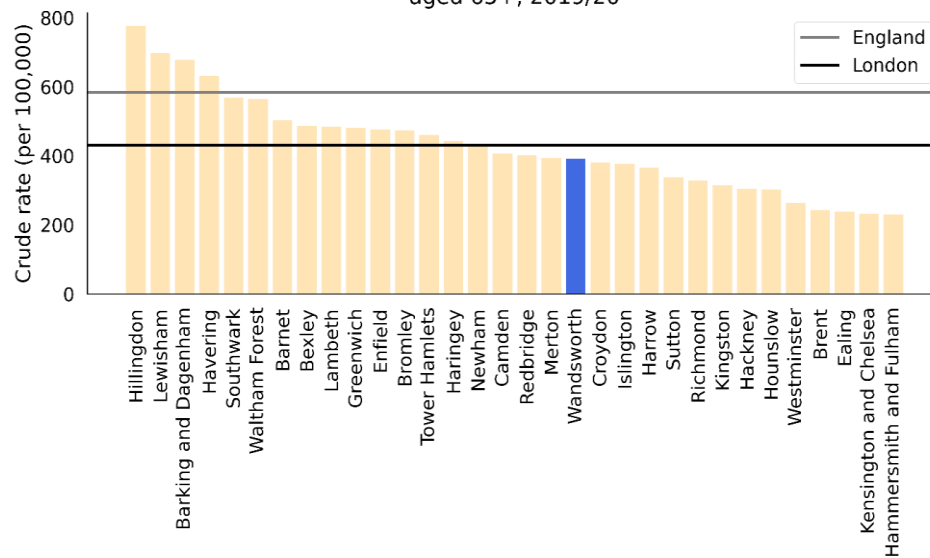


Permanent Admission to Residential and Nursing Care Homes

Permanent admissions to residential and nursing care homes per 100,000 aged 65+



Permanent admissions to residential and nursing care homes per 100,000 aged 65+, 2019/20



In 2019/20, Wandsworth's rate of permanent admissions of people aged 65+ to residential and nursing care homes was 392/100,000 (n=124) the 14th lowest rate in London, which was 32.9% lower than the England average and 9.1% lower than the London average. The latest Borough figure was also 47.4% lower from year 2006/07, in comparison with a 27.0% decrease in England's rate in the equivalent time period.

Public Health



Acknowledgments

Authors	Dawn Patrick Kate Parsley Anna James	Commissioning Officer (Policy & Projects) Senior Public Health Lead Commissioning Officer (Policy & Projects)
Contributors	Sarita Gogna Steve Shaffelburg Youssof Oskrochi Anca Costinas Anita Tse Arlene Thomas-Dickson Dr Kate Kandasamy Dr Lisa Wilson Hana Alipour-Mehraban Jo McIlmurray Busayo Akinyemi Sandy Keen Tamatha Macey Salman Klar Sally Bahri JSNA Operational Group	Commissioning Manager - Public Health, Wellbeing & Service Development Commissioning Manager Public Health Specialty Registrar Joint Commissioning Manager GP Registrar Senior Transformation Manager Mental Health & Personalisation SWLCCG Wandsworth Clinical Lead for End of Life Care, Elborough Street Surgery Public Health Lead Senior Commissioning Manager Head of Clinical Services and Governance, Battersea Healthcare CIC Head of Integrated Care and Mental Health, Merton and Wandsworth Head of Integrated Care, Merton and Wandsworth LDU Senior Public Health Lead Insight and Analytics Manager Intelligence Analyst
Governance	JSNA Strategic Group	
Reviewer	Dr Nike Arowobusoye Derek Oliver Shannon Katiyo Richard Wiles	Consultant in Public Health Assistant Director - Commissioning and Quality Standards Director of Public Health Head of Commissioning - Public Health, Wellbeing & Service Development
Image credits	Wandsworth Borough Council: Enrique Rovira, Emergency Exit Arts, Wandsworth Arts Fringe 2015	
Presented at	Wandsworth Health and Care Board June 3 rd 2021 Wandsworth COG June 9 th 2021 Wandsworth Care Alliance June 9 th 2021 Wandsworth Health and Care Board July 1 st 2021 Wandsworth COG July 14 th 2021 The final JSNA draft reports were presented jointly with the CCG at the Wandsworth Health and Wellbeing Board June 24 th 2021	
Date release	21 st September 2021	
Description	Wandsworth Joint Strategic Needs Assessment 2021 – Age Well chapter presentation	
Contact	Wandsworth Council 020 8871 6000 The Town Hall, Wandsworth High Street, London SW18 2PU	
Related documents	DataWand	