

Local Restriction Support Grants

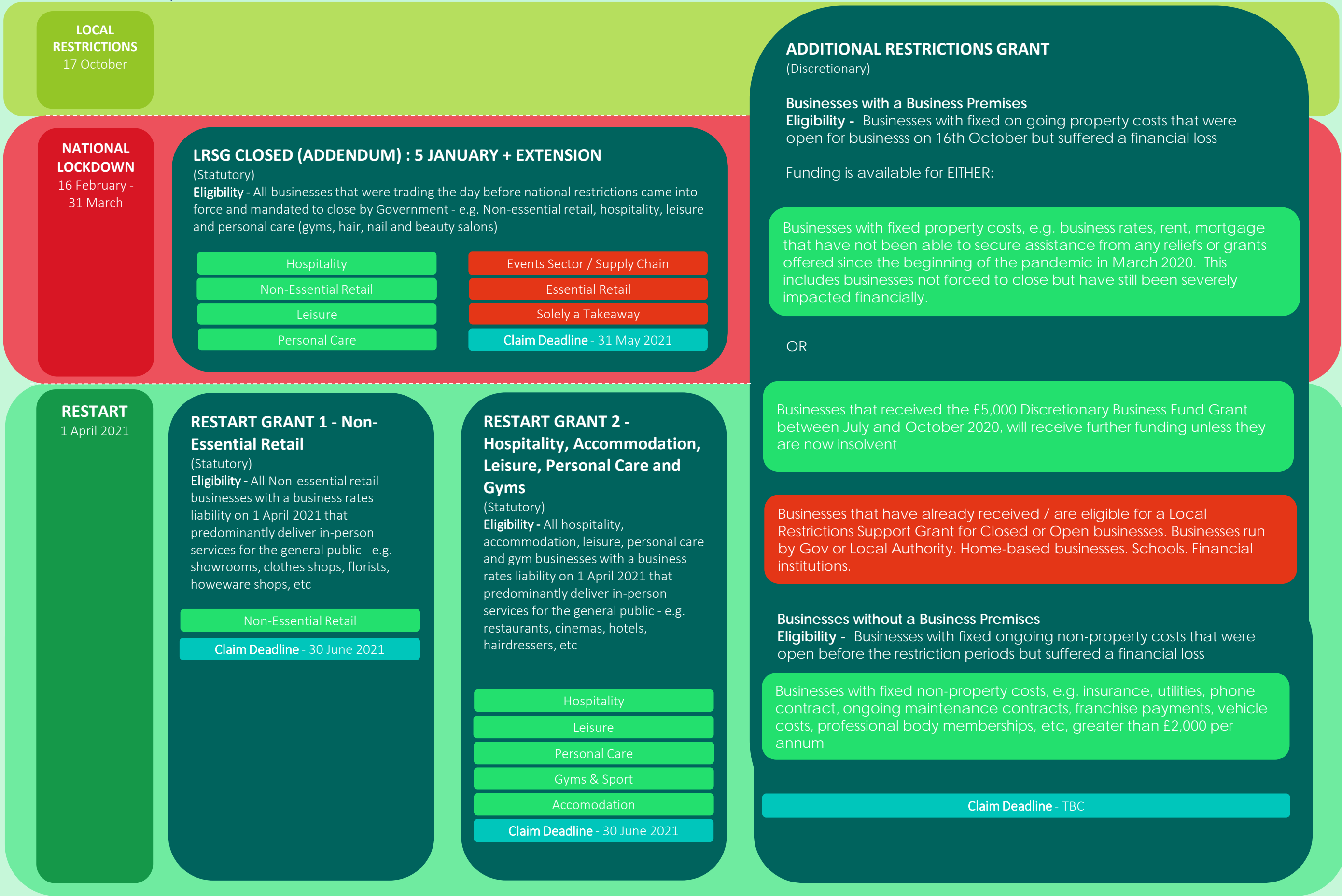
Each scheme detailed below gives a brief description of the eligibility criteria and the business types that we consider to be entitled to funding, with colour coding as follows:

- Eligible** Your business may be eligible for the funding and you should submit a claim form for assessment
- Ineligible** Your business is not eligible for the funding and you should not submit a claim

Which grant scheme should I be claiming - Does the business have a business rates liability, i.e. Does the business pay business rates?

YES

NO



The Government considers the following business types to mean:

Accommodation	Hotels and Bed & Breakfasts.	Personal Care	Hairdressers, Nail Bars, Beauty Salons, Tanning Shops, etc.
Events Sector / Supply Chain	Event Hire, Event Planning, Catering Supplies, etc.	Pubs	Public Houses that only serves alcohol as part of a substantial meal.
Hospitality	Restaurants, Cafes, Sandwich Shops, Bars, etc.	Essential Retail	Supermarkets, Convenience Stores, Laundrettes, Post Office, Vehicle Hire, etc.
Leisure	Gyms, Sports Grounds and Clubs, Sports and Leisure facilities.	Solely a Takeaway	Food Takeaways that were operating as a takeaway pre-COVID.
Non-Essential Retail	Clothes Shops, Car Washes, Homeware Stores, Mobile Phone Shops, etc.	Wet Led Pubs	Public Houses that derive more than 50% of sales from drink (pre-COVID).