

Wandsworth Council Climate Change campaigns

July - October 2020



Wandsworth's Transport Strategy

Margo Turner and Jane Greatholder



Local Implementation Plan: overview

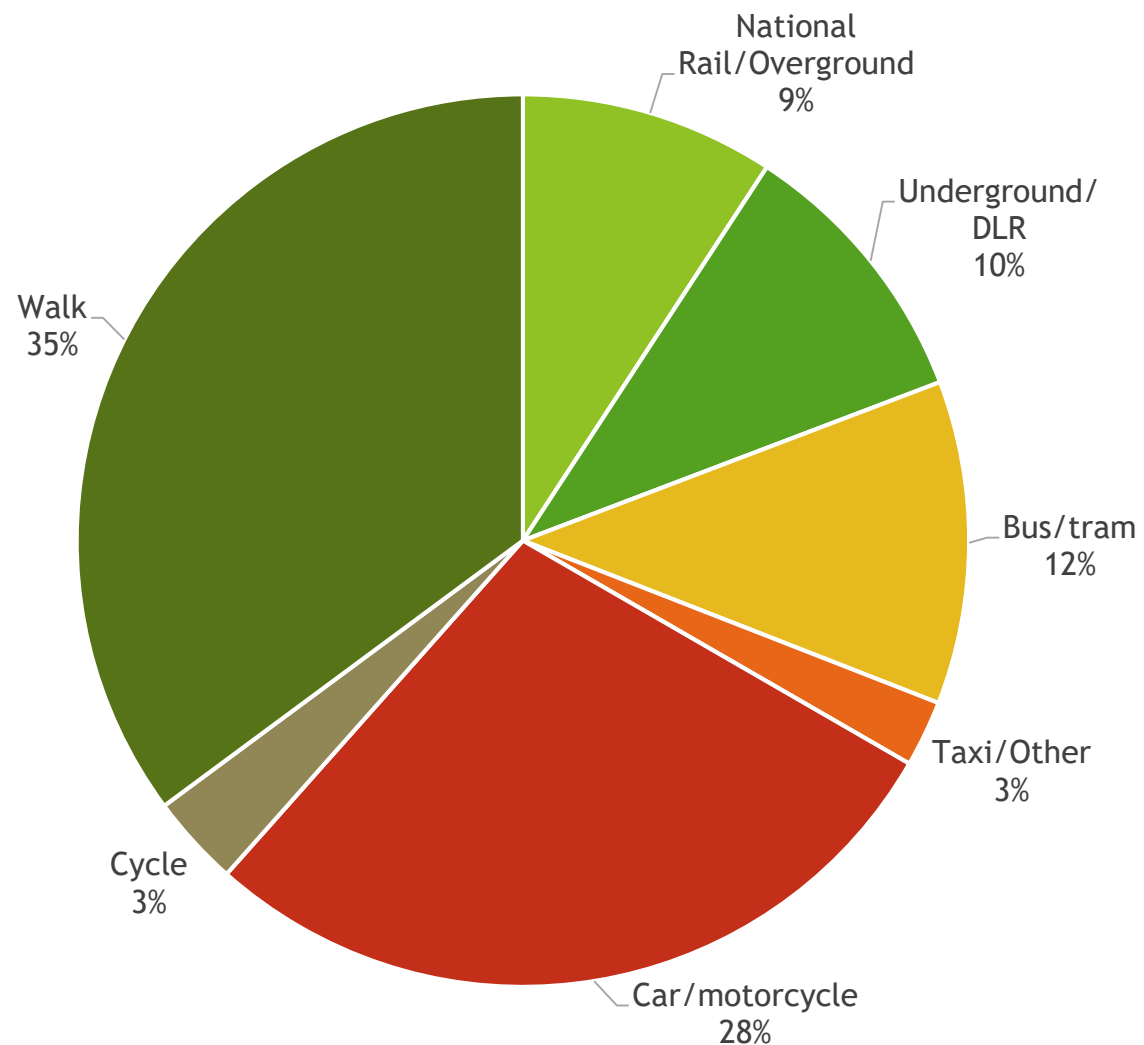
► Themes:

- Changing the transport mix
- Healthy Streets and healthy people
- A good public transport experience
- New homes and jobs

► Headline mode share target supported by 9 transport outcomes (each with 1-3 targets)

► Timescales are to 2041, but most have interim targets as well

Mode share target



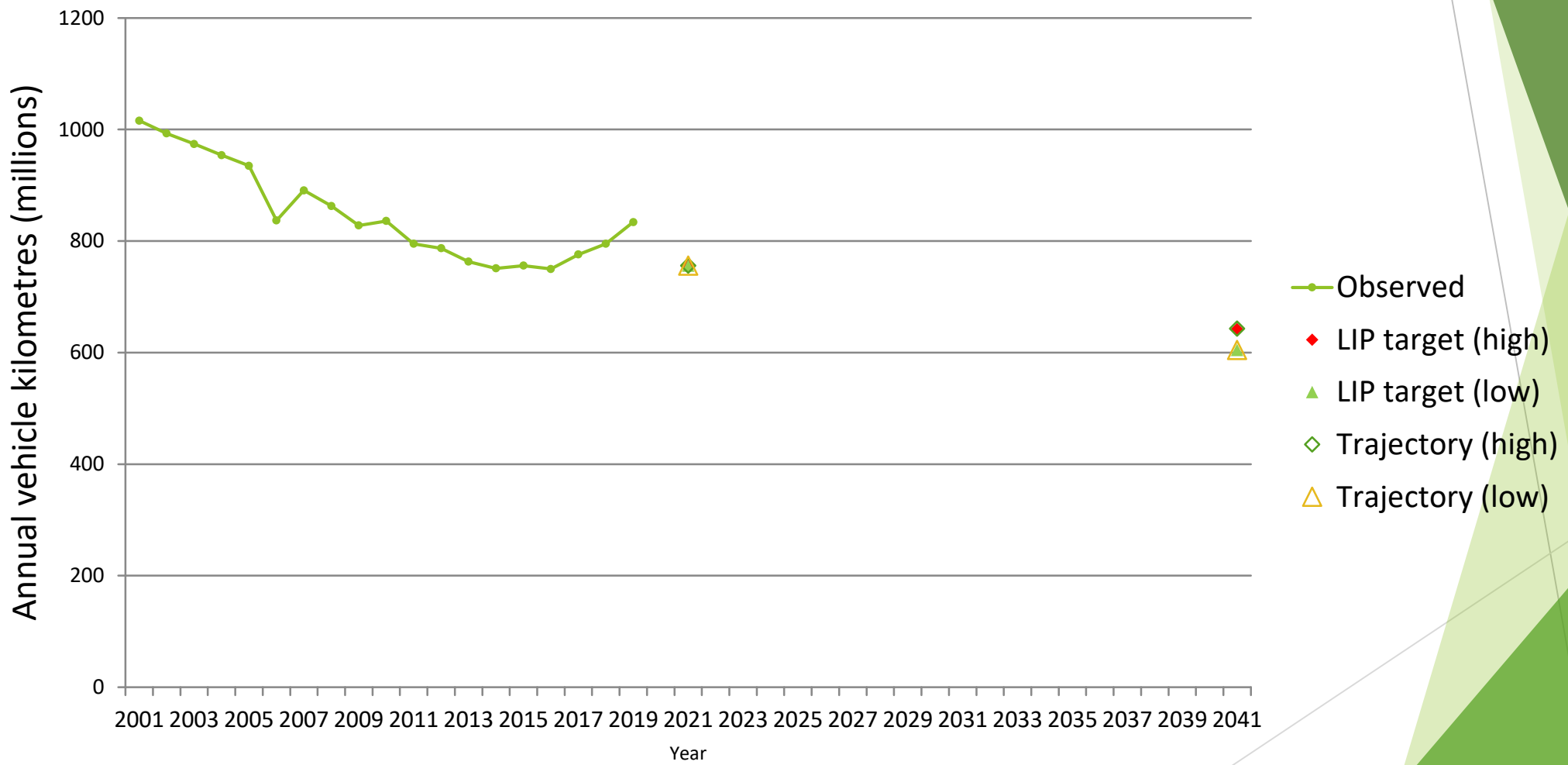
Baseline: 71%

2021 target: 73%

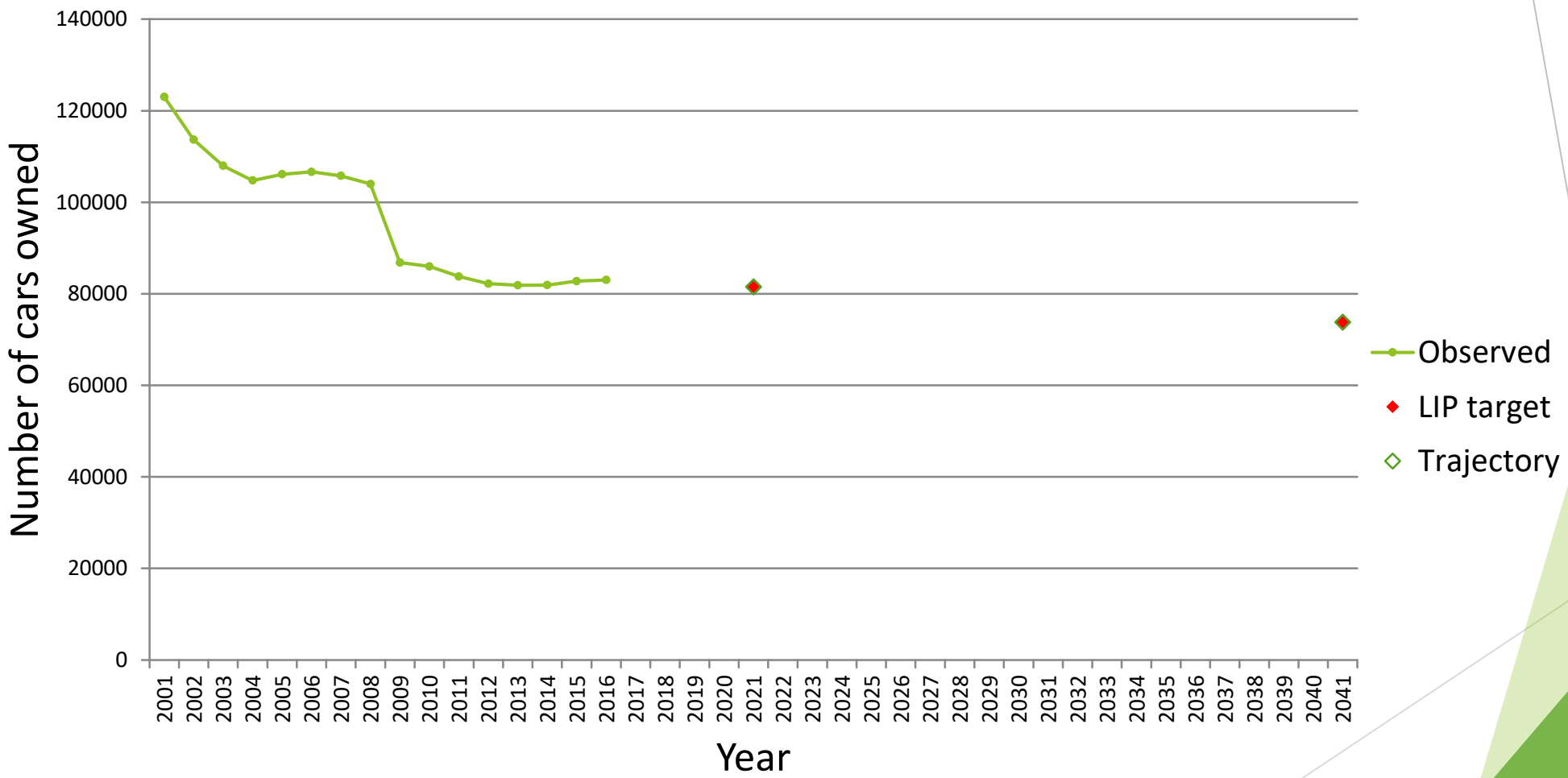
2041 target: 82%

Measurement: mode share by residents

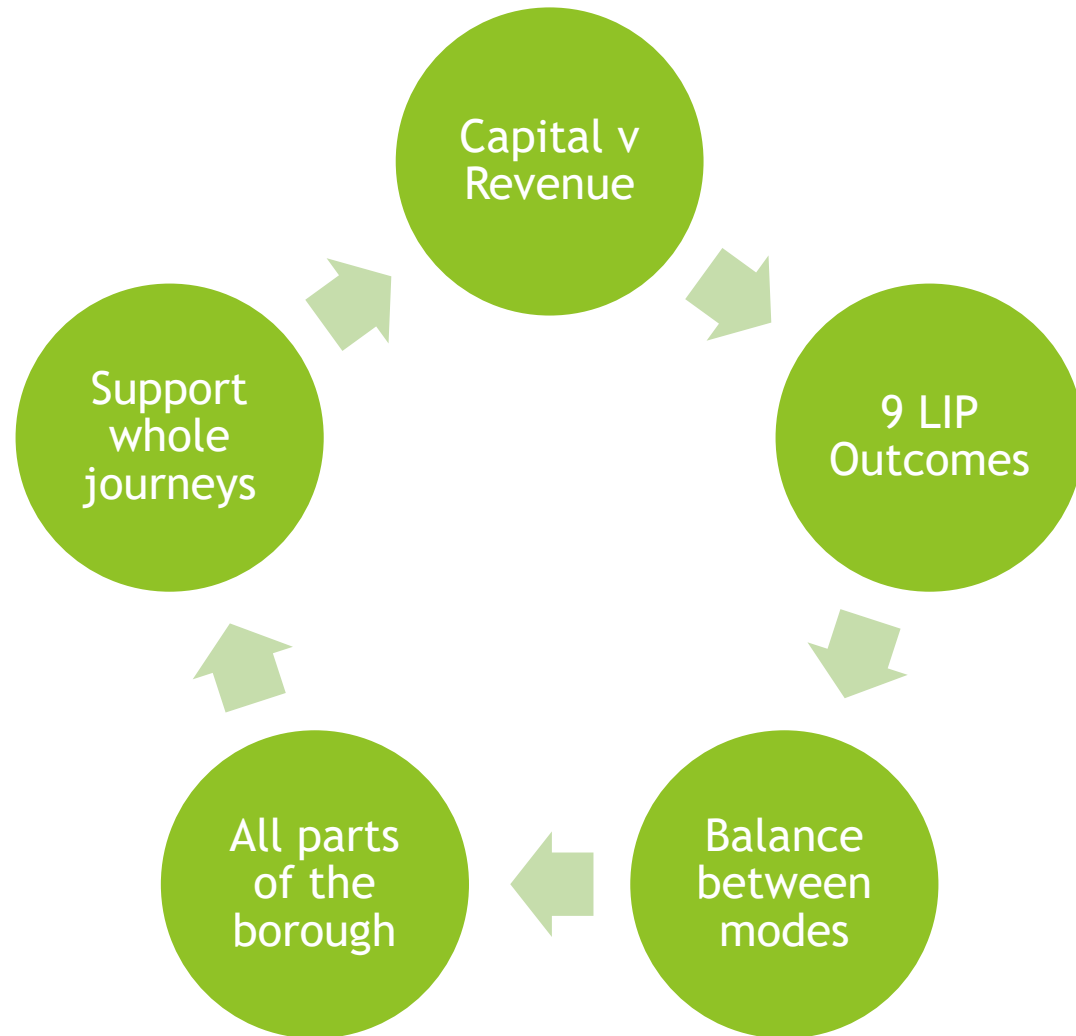
Outcome 3a: Reduce the road traffic volume



Outcome 3c: Reduce car ownership



How we shape our programme



+

Wandsworth
Capital Programme

Supplementary TfL
Programmes

Third party funding
opportunities

Developer
obligations

Public spaces





Highway Schemes -Queenstown Rd

School Streets





Bikehangars



Wandsworth Bikehanga...



24,906 views



SHARE



Wandsworth Bikehangars - phase 1



- Acuba Rd
- Aslett Street (Crealock)
- Astonville Street
- Avarn Rd

... 17 more



Pre 2020

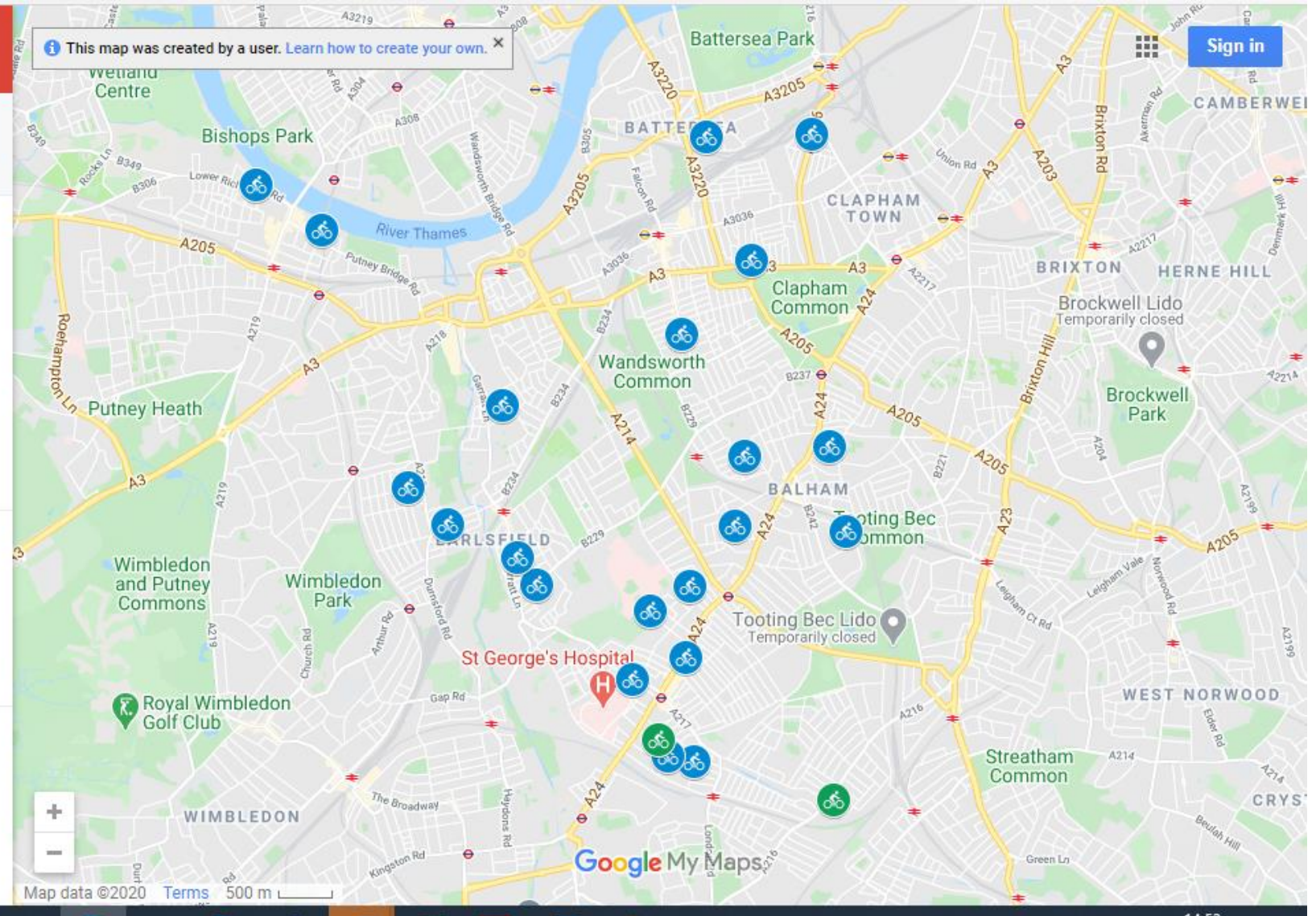
- Himley Road
- Kettering Street



Made with Google My Maps

This map was created by a user. [Learn how to create your own.](#)

Sign in



Map data ©2020 Terms 500 m

Google My Maps

Margo Turner Jane Greatholder

Margo.turner@richmondandwandsworth.gov.uk

Jane.greatholder@richmondandwandsworth.gov.uk