

# Brightside

Issue 191 July 2020

The magazine of Wandsworth Council



Looking towards  
an even better  
future

Page 7







Love giving them a home

#lovetofoster

Call us now on (020) 8871 6666



# Inside

July 2020

Cover: Wandsworth thanks the amazing NHS



page 4

## 'Let's shape a better future'

Council Leader Ravi Govindia on Wandsworth's recovery **PAGE 7**

## Thank you for thanking them

Thanks to everyone who sent messages of support to our waste crews **PAGE 8**

## Libraries during the lockdown

Online use soars **PAGE 9**

## Secure your status

Support for the borough's EU nationals **PAGE 10**

## Rainbow crossing unveiled

Borough shows its support for the LGBTQ+ community **PAGE 11**

## Remembering John Archer

Call for statue of London's first black mayor **PAGE 12**

## Housing for all

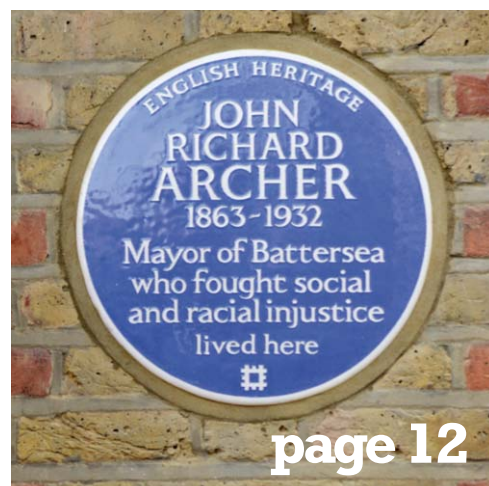
Home building efforts re-double post-COVID **PAGE 17**

## Open for Business

Getting the high streets back on their feet **PAGE 18**



page 5



To obtain a copy of Brightside in large print please telephone (020) 8871 7266 or email [brightside@wandsworth.gov.uk](mailto:brightside@wandsworth.gov.uk)

### YOUR BRIGHTSIDE

Your Brightside is distributed by Lbox Communications. We expect all copies of Brightside to be delivered to every home in the borough and pushed fully through the letterbox.

It is produced by the council's corporate communications team. It is the only publication delivered to every household in the borough. We would like to thank all our advertisers for their support. Brightside will consider display advertisements from non-council bodies (excluding recruitment) and reserves the right to decline advertisements. The council neither accepts responsibility for the content of nor endorses any non-council advertisements.

• Editorial (020) 8871 8902. • Advertising (020) 8871 7266

If you have a comment about the magazine please telephone: (020) 8871 8902/6173 or email: [brightside@wandsworth.gov.uk](mailto:brightside@wandsworth.gov.uk).

Brightside is printed on environmentally friendly paper, please recycle.



# Thank you

The Kambala Residents Association set up Kambala Cares to help the community's elderly and vulnerable people.



“ THE LAST FEW MONTHS HAVE BEEN A CHALLENGE FOR US ALL, BUT NEVER IN ALL MY TIME LIVING IN WANDSWORTH HAVE I KNOWN SUCH A FANTASTIC SENSE OF COMMUNITY.

You have all really pulled together and supported each other in a magnificent way.

The council very rapidly set up a £100,000 Covid-19 Emergency Response Grant to fund community schemes, and some schemes benefited from this. Established organisations sprung into action and quickly pivoted towards providing help, with staff working from home and services provided as much as possible online.

But in many cases projects to help vulnerable people with food parcels, medicine deliveries and other vital help spontaneously sprung up and kept going through the generosity of the local community. Many more of you stepped forward to volunteer to help.

Week after week you also cheered on our NHS staff and other key workers like bin collectors and street sweepers. And most of all you heeded the advice to stay home, helping to reduce the infection rate. It meant we could keep our parks open so that people could enjoy them for their daily exercise.

Thank you, people of Wandsworth, for all you have done during the lockdown, and I want to tell you that I am very proud to be your mayor. Long may this spirit of community continue.



The Mayor of Wandsworth,  
Cllr Jane Cooper



The South London Scrubbers are a team of volunteers sewing scrubs for London hospitals including St Georges.





The charities **Generate and Share** worked together to create meals for people with learning disabilities, which were delivered by learning disabled people.



**Waste Not Want Food** are doing sterling work providing food parcels to vulnerable people.

Local people have donated unwanted bikes which have been renovated by the council's road safety team and donated to NHS workers.



**Age UK Wandsworth** worked with the council to set up a food delivery hub in the Wandsworth Civic Suite and delivered food parcels to hundreds of older people.







**Critical NHS**, an organisation dedicated to helping critical care staff at St George's Hospital, contacted Wandsworth Council after nurses said they were in desperate need of at least 10 new tablet computers. In response, Wandsworth Council contacted a number of tech companies and '101 Ways', who are a technology consultancy, responded quickly saying they would provide all ten.



**Rackets Cubed** worked with other organisations to distribute Roehampton Community Boxes.



**Women of Wandsworth** delivered food parcels to elderly residents of the Doris Emmerton Court sheltered housing scheme.



**Regenerate** ran a food delivery scheme in Putney.



**The Dons Local Action Group** expanded into Wandsworth with their food delivery service for people in need.



**Be Enriched** delivered weekly hot food and grocery boxes to vulnerable people.



**The local fire brigade** volunteered their time to help deliver food parcels.



**The Coronavirus Angels** gave self-isolating people someone to talk to as well as practical help.





# Let's grab the chance to shape an even better future.



“ Together, we are getting through this crisis, but now as a borough we need to turn our attention to how we can not only get back on our feet, but grasp the opportunity to become an even better place to live.



For so many people in the borough the last few months have been very painful and I send my heartfelt sympathies to everyone who has experienced the loss of a loved one. People have also lost livelihoods as businesses and shops have been forced to close their doors.

I believe our key priority must be to bring back our town centres to once again be the focus of local life. The council will look at innovative and ambitious masterplanning so that they remain at the heart of our communities. We will work hard to support local shops and businesses so once again our economy thrives and provides jobs for local people. House building and the construction sector has in the past delivered homes and jobs. Once again it can do this – it can build more homes and provide more jobs. On page 17 you'll see that in addition to our ambitious plan to build a thousand more affordable homes we will aim to build a further 2,500 for our key workers and all residents and families that need a decent, affordable place to live.

And the lockdown has shown us how critical green space is for our physical and mental wellbeing. We already have some of the best parks in London. We will work to ensure that our new green spaces are equally good.

We have already made it crystal clear that tackling climate change is a major priority and we have set ourselves ambitious targets to become a carbon-neutral organisation

by 2030, and for Wandsworth to be inner-London's greenest borough we just need to work harder and faster to deliver these priorities - encouraging sustainable transport and supporting pedestrians and cyclists will be of increased importance in the days ahead.

Our libraries and arts teams have found imaginative, creative ways to deliver culture online during the pandemic, and these services will remain a vital part of the council's work.

And of course we will redouble our efforts to ensure we give our young people the best start in life and protect our vulnerable residents, and our public health team will be working across all council teams to ensure all our plans have people's health and wellbeing at the centre.

We've already achieved so much in Wandsworth to deliver the clean, safe, green communities and the homes that local people need. Now, by thinking creatively alongside our residents and partners in the public and private sector, together we can come out of this crisis stronger than ever.



Cllr Ravi Govindia Leader, Wandsworth Council





# Thank you for thanking them

THANK YOU TO EVERYONE WHO SENT IN MESSAGES OF SUPPORT TO OUR WASTE CREWS – ALL THE REFUSE COLLECTORS, STREET CLEANERS, FLY-TIP REMOVAL CREWS AND OTHERS – WHO WORKED SO HARD TO KEEP OUR BOROUGH CLEAN AND SAFE DURING THE CORONAVIRUS CRISIS.

Scott Forrester drives a Serco bin lorry for Wandsworth Council. At the height of the lockdown, he told us how much the messages meant to the crews.

"The support from the public has been brilliant. Residents are leaving notes on the bins and we now have a wall in our office covered with kids' drawings – my favourite is one of a high five! It's great to be appreciated like this. We are

keyworkers and have been called the 'fourth emergency service' and it's nice that residents are on our side and are showing their thanks. We do feel valued and it's brilliant seeing families coming out to wave at us – the children love the lorries. "If I had a message for people it would be a big 'thank you' for your support, good cheer and the happiness sent our way."





# Libraries during the lockdown



Use of online library services increased tenfold during the lockdown.

Although all 11 of Wandsworth's branch libraries were forced to close their doors, the libraries service really embraced the move to digital. Staff produced more than 300 videos of rhyme times, story times, sing and sign, craft sessions, poetry readings, science sessions and even exercise videos. These videos have attracted more than 150,000 views and many are still there to enjoy at [facebook.com/pg/wandsworthlibrarians](https://facebook.com/pg/wandsworthlibrarians)

Thousands of people also took advantage of the many audio books, E-books, E-newspapers and E-magazines - all for free - plus free music downloads and streams from a choice of over 15 million songs and playlists ranging from opera and classical music to jazz, rock and pop.

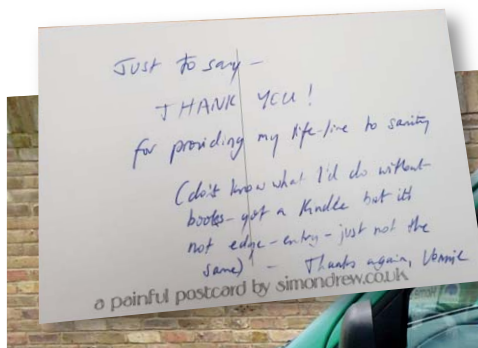
The annual Wandsworth Heritage Festival had to be cancelled, but staff at the heritage service found a way to put some content around this year's theme of home online via their twitter feed and blog. Find them on twitter @Better\_WHS



One of the blog entries is from local historian Neil Robson on the history of Southfields.



One of the online story sessions



Throughout the crisis Karen Kneller and her colleagues continued to deliver books to residents who normally find it difficult to get to their local library. Every week the home delivery library assistant for Wandsworth heads out to deliver hundreds of books to individuals who see her work as a 'lifeline'.

"People really appreciated that we still ran a service and I've received 'thank you' cards and text messages. One of them said, 'You are providing a very vital service. Without you I would go potty!' and another person wrote, 'Just to say thank you for providing my lifeline to sanity. I don't know what I would do without the books.'"

Find out more about the home delivery service and other library services at [wandsworth.gov.uk/libraries](https://wandsworth.gov.uk/libraries)

## #gettoknowyourlibrary

Town centre libraries have reopened but with limited opening hours and services. Please check with your local library or visit [wandsworth.gov.uk/libraries](https://wandsworth.gov.uk/libraries) for details.





# Road changes to keep people safe

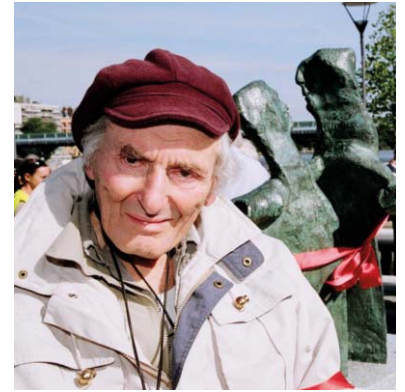
A range of measures will be rolled out across Wandsworth in the coming months to help keep pedestrians and cyclists safe and socially distanced.



Measures that will be developed and delivered are likely to include:

- Using barriers to widen footways and increase space for pedestrians, particularly outside shops and transport hubs
- Accelerating the next stages of detailed design work on previously approved schemes including comprehensive travel plans for Garratt Lane and Queenstown Road.
- Providing additional cycle parking facilities at key locations, installing pop-up cycle lane facilities and accelerating the delivery of contra-flow cycle lanes
- Exploring options for the potential closure of some streets to vehicular traffic.
- Further roll out of 20mph speed limits on the borough's B roads
- Introducing Low Traffic Neighbourhoods

A detailed long-term action plan will be discussed by councillors in September.



ALAN THORNHILL

Sculptor Alan Thornhill died in March at his home in Gloucestershire aged 98. Alan lived in Putney from 1959 and maintained his studio there until his death.

Mr Thornhill donated nine bronze pieces to Wandsworth Council which form the permanent Putney Sculpture Trail opened in 2008. The trail is the largest permanent public collection by one artist in the whole of London. Council leader Ravi Govindia said: "Alan Thornhill's creative genius has provided a long lasting legacy for the people of Putney. His contribution to cultural life in the borough cannot be overestimated. We owe him a huge debt of gratitude."

Alan is survived by three children, Anna, Teresa and Philip. A moving documentary about his work made by his daughter Anna can be accessed through his website [www.alanthornhill.co.uk](http://www.alanthornhill.co.uk)

## EU nationals - secure your status

European nationals and their non-EU family members need to take action to secure their right to live, work, study and receive benefits and services after Brexit.

Citizens Advice Wandsworth works in partnership with Wandsworth Council to offer information and advice about Brexit and related issues to EU citizens and their non-EU family members living or working in Wandsworth.

The EU Project Team can help you apply to the EU Settlement Scheme and can also help EU nationals with issues such as employment, access to benefits, housing and debt. There are also regular information sessions where you can learn more about your rights post-Brexit.

The EU Settlement Scheme (settled and pre-settled status) is free.

To make a successful application you just need to prove your identity, prove that you live in the UK and declare any criminal convictions. For more information visit [gov.uk/eu-settled-status](http://gov.uk/eu-settled-status)

You should apply before December 31 2020, as this is when your rights could change.

**Contact the Citizens Advice Wandsworth EU Project Team:**

By phone:

■ EU Project Line 0203 5592054

■ Advice Line 0300 330 1169

By email: [euadvice@cawandsworth.org](mailto:euadvice@cawandsworth.org)

For more details and to check the dates for next free information events visit [www.cawandsworth.org/eu](http://www.cawandsworth.org/eu)





# Borough's first rainbow crossing

Wandsworth Council unveiled its first Rainbow crossing to show its support for the borough's LGBTQ+ community.

The crossing is in Lavender Hill, close to Battersea Arts Centre. The location has been chosen because of its high profile.

It is one of the borough's busiest crossing points and is situated next to a major local landmark.

The council's transport spokesman Cllr Paul Ellis said: "Here in Wandsworth we are

hugely proud to show our support for the LGBTQ+ community. We want all our residents and our communities to know that we are here with them, we support them, and we are working hard to make sure our borough is a place where people feel safe, free from discrimination and proud to be themselves."



Left to right - Battersea Arts Centre artistic director Tarek Iskander, David Robson, chair of the Wandsworth LGBTQ+ Forum, Cabinet member for communications Cllr John Locker and Cllr Paul Ellis



## TYPE 2 DIABETES KNOW YOUR RISK

Finding your risk of Type 2 diabetes only takes a few minutes. It could be the most important thing you do today...

Check your risk online at  
[nhs.uk/health/diabetes/diabetes-risk-check/](https://nhs.uk/health/diabetes/diabetes-risk-check/)



Source: Public Health Annual Report 2016 - Diabetes in Wandsworth

Every week 15 people in Wandsworth are told they have diabetes



15,000 residents are living with the condition...



...and another 25,000 are on the verge of getting it.



TC 2469 Bada (2.18)



# Remembering John Archer

WANDSWORTH COUNCIL LEADER CLLR RAVI GOVINDIA HAS LAUNCHED A CAMPAIGN TO ERECT A STATUE TO LONDON'S VERY FIRST BLACK MAYOR.



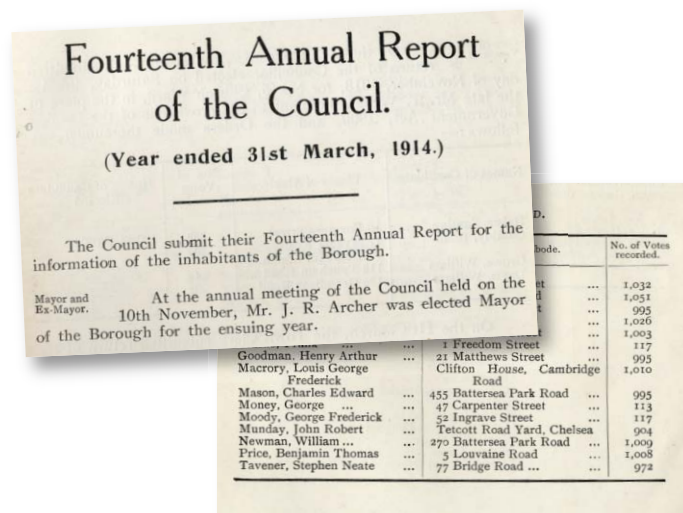
In 2013 John Archer was chosen as one of 10 'Great Britons' by Royal Mail and included in a series of stamps.

Cllr Govindia says the council will contribute an initial donation towards the statue and then seek further contributions from the wider community to help get it built. This followed calls by Love Battersea for the local trailblazer to be commemorated.

John Archer, whose father was from Barbados, moved to Battersea in the 1890s with his wife Bertha, and initially served as a councillor in the Latchmere ward, successfully campaigning for a minimum wage of 32 shillings a week for council workers.

He was elected as Mayor of Battersea in 1913 and gave a rousing speech in which he declared: 'You have made history tonight. For the first time in the history of the English nation a man of colour has been elected as mayor of an English borough. That will go forth to the coloured nations of the world and they will look to Battersea and say Battersea has done many things in the past, but the greatest thing it has done has been to show that it has no racial prejudice and that it recognises a man for the work he has done.'

In 1918 he became the first president of the African Progress Union and chaired the Pan-African Congress in London. He was later elected, in 1931, councillor for the Nine Elms ward and when he died a year later aged 69 he was the deputy leader of Battersea Council.



Cllr Govindia said: "Now seems the right time to look for positive role models and to celebrate the achievements of John Archer who remains an inspiration for so many people. 'With racial equality and justice at the forefront of the news agenda I feel that this is the perfect way to celebrate black achievement and a man who paved the way for future generations of politicians from black and minority ethnic backgrounds.'"

Cllr Govindia added: "There is a motto attributed to Battersea that reads 'Not for me, not for thee, but for us'. This seems more fitting than ever and it will be a fantastic achievement for all of us to help raise a public statue for this famous son of Battersea, to mark his achievements forever."



An English Heritage Blue Plaque has been put up at Archer's former home in Brynmaer Road.





# Apply now for council grants

The Wandsworth Local Fund (WLF) is a charge the council makes on developers which is then used to benefit the local area. Since Wave 1 opened in 2015, more than £9m has been spent on projects to benefit local communities including improvements to parks, sports pitches, streetlights, children's playgrounds, roads and pavements, community centres and public open spaces.

The council is welcoming applications that contribute to its pledge to become the greenest inner London borough, reducing carbon emissions, improving air quality and biodiversity and encouraging behavioural change.

The deadline for applications for round nine of the Wandsworth Local Fund is July 20. Find out more at [wandsworth.gov.uk/WLF](http://wandsworth.gov.uk/WLF).

The Wandsworth Grant Fund awards money to local charities and voluntary groups for community projects. We would encourage applications for projects that benefit communities following the impact of the Covid-19 pandemic.

However, applications are also being considered on schemes to raise aspirations, help young people reach their potential, support the arts and keep people fit and well.

The council is particularly keen to hear about projects that will help it meet its pledge to tackle climate change.

The deadline for applications is August 10. Visit [wandsworth.gov.uk/wgf](http://wandsworth.gov.uk/wgf).



One of the projects to receive money from the Wandsworth Grant Fund is Sharing Seeds from Transition Town Tooting to encourage people to plant seeds at the base of street trees in Tooting. Some planned activities had to be cancelled, but the project still went ahead during the lockdown, with people sharing their planting successes on social media. To find out more visit [@sharingseeds](https://www.instagram.com/sharingseeds) on Instagram.



“ The majority appreciate what we’re doing ”



# Enjoy our parks

SELINA HILL IS ONE OF THE COUNCIL'S PARKS POLICE TEAM HELPING LOCAL PEOPLE TO SAFELY ENJOY THE BOROUGH'S PARKS AND OPEN SPACES. SHE TELLS US WHAT A TYPICAL DAY IS LIKE.

"I'm normally out in the parks by 7am. There are two shifts a day so the parks police will be out until 11pm. Myself and my partner are here to help people make the most of their visit to local parks and commons; to enjoy the outdoors and stay safe at the same time.

"We are used to engaging with people, and over the last few weeks, we have talked to many residents to help them stay safe. Unlike some local authorities, Wandsworth kept its parks open during the lockdown and during that time we encouraged people to go for their walk, jog, cycle or play with their kids. Keeping these spaces open is so good for people's mental and physical wellbeing.

"The majority appreciate what we're doing. Sometimes people just want that little bit of explanation on the guidelines. We are happy to give that in as polite a way as possible, but what we won't tolerate is the irresponsible few who put others at risk; and we'll always tackle that when we see it happening.

"We've had many people stop us to say, "thank you" including the NHS. I cannot express enough how much we have appreciated this, in such challenging times, and I know that all the Parks Police would like to thank you for your continued support."



When you enjoy our parks this summer please take your litter home with you. If you see a flytip in a park or anywhere in the borough, report it to us. Visit: [wandsworth.gov.uk/flytipping](https://www.wandsworth.gov.uk/flytipping).





# Keeping children learning

During the lockdown, Wandsworth's schools found creative ways to teach our children.

Still physically open for the children of key workers and vulnerable children, other pupils were taught online, often face-to-face via skype, zoom and other tools.

Not all children have access to the internet at home, so the council worked with Battersea Power Station and the local community on the Power to Connect scheme to make hundreds of laptops, dongles and data vouchers available to families.

Most borough schools opened to some children last month. The council drew up a nine-point plan to enable this to happen, including the offer of PPE equipment, offering the free use of parks and council buildings to enable social distancing, ensuring free transport for SEN children is safe and mental health support for teachers.

Education spokesman Cllr Will Sweet said: "It is testament to the hard work of our headteachers, teaching staff and Wandsworth town hall officers who have all worked tirelessly to ensure it is safe for pupils to return. They are a credit to their profession and deserve our thanks and praise."

Find out how to donate at [powertoconnect.co.uk](http://powertoconnect.co.uk)



To help keep the little ones entertained this summer, Wandsworth councillors have been reading *The Gruffalo*. Watch them at: [youtube.com/WandsworthBC](https://youtube.com/WandsworthBC)

## Coming Soon!

Make the most of summer, whatever floats your boat. Stay alert for your opportunity to get involved in fun local activities for young people and families in Wandsworth.

Booking is by referral only. For more information email [yoursummer@richmondandwandsworth.gov.uk](mailto:yoursummer@richmondandwandsworth.gov.uk)

photo credit: Rawpixel



# Windsor Apartments

AT PRINCE OF WALES DRIVE



Windsor Apartments show home

## Metropolitan by Nature

On the edge of Battersea Park, Windsor Apartments is an impressive collection of one and two bedroom homes at a prestigious development in Wandsworth available for Shared Ownership.

Benefit from high quality finishes, spacious private balconies and all that this amazing city has to offer.

### Ready for Occupation

Make yourself at home – stunning one and two bedroom homes are ready to occupy in Huntington House and Radley House.

### Eligibility

Working in partnership with Wandsworth Borough Council priority will be given to applicants who are living or working in the Borough.



Call 0300 100 0309  
Visit [WindsorApartments-SW11.co.uk](https://www.WindsorApartments-SW11.co.uk)

[shared.ownership@myclarionhousing.com](mailto:shared.ownership@myclarionhousing.com)  
[myclarionhousing.com/sharedownership](https://myclarionhousing.com/sharedownership)





# Housing for all - efforts redouble post-COVID

Wandsworth Council is to increase the number of homes it will build to support the borough's economic recovery and provide more affordable homes following the Coronavirus.

Wandsworth has already committed to building a thousand homes. Now council leader Cllr Ravi Govindia is confident the council can deliver a further 2,500 homes, helping more people to be able to afford to live in the borough.

New homes built by the council will continue to be prioritised for local people and workers.

He said: "Our aim is to create a borough where everyone can make a home, no matter what stage their life is at. We will do this by delivering an ambitious building programme of 2,500 new homes by 2025 with at least 60 per cent of them affordable.

"The homes we build are being prioritised for local people first and we are building quality, sustainable homes of different sizes, for sale or rent, which suit everyone – from people on low incomes, to first time buyers, to families and our fantastic key workers."

The council is already on track to deliver 1,000 council homes, as well as two huge estate regeneration schemes. The borough has some of the best green spaces, including the iconic Battersea Park. But Cllr Govindia said the pandemic had 'focused minds' on the need to do more.

"We need to be more ambitious in how we adapt and plan for a greener urban landscape.

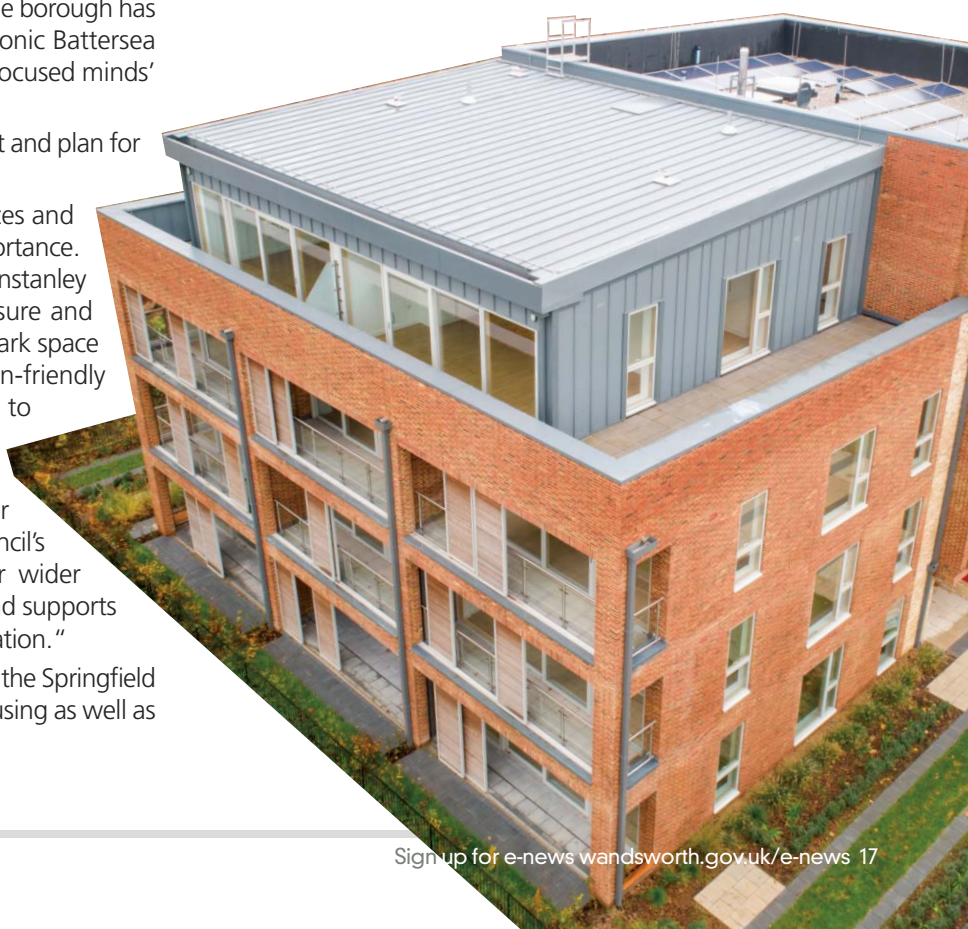
"If you live in a flat, having break-out workspaces and useable open spaces nearby are of premium importance. That is why I am so proud of our plans for the Winstanley and York Road estates, which will see new leisure and community facilities built around a reimagined park space and allowing the creation of a new, pedestrian-friendly corridor from the Thames riverside through to Clapham Junction station.

"I am therefore proposing that a similar transformative masterplan is developed for Wandsworth Town Centre that will utilise the council's land at its town hall, acting as a catalyst for wider improvements to our streets and open spaces and supports Wandsworth's place as a retail and leisure destination."

Additional focus could include further developing the Springfield Hospital campus masterplans to include new housing as well as improved health facilities.



“ We need to be more ambitious in how we adapt and plan for a greener urban landscape ”







Local custom: Cllr Jonathan Cook in Tooting town centre



**We're open  
for business**

Put your £ where your  
❤ is and shop local

#Shoplocal #supportlocal  
#open4business

# Local shops open their doors

High streets across the borough are coming back to life again following the lifting of COVID-19 restrictions

During lockdown, Wandsworth Council distributed around £55m in grants to small and retail businesses across the borough and helped thousands of business people to navigate the government support and advice available to them.

But now businesses across Wandsworth are counting on your local support as they adapt to new ways of trading or opening their doors safely to customers and staff.

Cllr Jonathan Cook, Wandsworth Council's Cabinet member for economic development, skills and employment said: "Our town centres are unique thanks to businesses of all sizes that bring growth, innovation and jobs to our communities. The determination of

Wandsworth's local traders to find new ways of welcoming and serving their customers reflects the entrepreneurial spirit of the borough that we are so proud of.

"We can all do our bit by shopping locally wherever possible - whether we are a consumer or another business or organisation. We've got some great businesses in our borough and they deserve your support.

"You don't need to go far from home to find local traders and retailers, so do check out one of the shopping apps or local neighbourhood websites such as My Virtual Wandsworth to see what's on your doorstep." [wandsworth.gov.uk/my-virtual-wandsworth](http://wandsworth.gov.uk/my-virtual-wandsworth).

**“ We can all  
do our bit! ”**



Open for business: District café in Nine Elms

## Back to work at the Wheatsheaf, Tooting

The Wheatsheaf's manager, George, said: "When lockdown started we pivoted and adapted our pub business. We now have a deli, provide food and roasts as a click & collect service, alongside beers, cocktails and wine to take away. The response from locals has been fantastic. We've been so busy we have had to take seven members of staff off furlough and bring them back to work. There are definitely things we plan to continue after lockdown, with click & collect, perhaps some form of a deli and most likely the sustainable growler system for beers, which has proved to be very popular!

"We've put in place clear floor markings with limits on how many people can come in at any one time, all our staff wear PPE and we have a regular cleaning schedule with hand sanitiser everywhere."



Safe trading: George at the Wheatsheaf, Tooting



# Work Match helps COVID-hit residents find work

Do you need to find a new job this summer or want to change career?

Over 200 new jobseekers have recently signed up to take advantage of new opportunities through Wandsworth Council's Work Match service.

Working closely with employers to fit the right people into job vacancies, the Work Match team listens to what businesses need and then helps jobseekers get their CV in shape and be interview-ready. The jobs-brokerage has now placed more than 1,500 residents in jobs since it opened in 2013.

During the Covid-19 restrictions, Work Match has stepped in to help match local people with vacancies in their local area. Many residents have started looking for work closer to home and a number of local businesses needed to recruit local people urgently who could get to work quickly and safely.

One successful resident was Kristina Joyce, from Battersea, who registered with Work Match after her job contract came to an end and she was looking for work.

Kristina said: "Work Match was actually recommended to me by a friend who had used the service herself. They were very professional and helpful, giving me advice on my CV and how to interview. Even though it was during Covid-19 when I was looking for work, Work Match helped me find a new job at a local doctors' surgery. I really appreciate Work Match as it helps local people find opportunities within their own borough."

Councillor Jonathan Cook, Wandsworth Council's Cabinet member for economic development, skills and employment, said:



'I am very thankful for Work Match for helping me out in very tough times.'  
Juan, supermarket worker



'I would recommend Work Match to find work, they were very supportive in finding me an ideal job.'  
Letitia, Senior Cleaner



'I found the process of recruitment very smooth and efficiently run.'  
Felix, intensive care unit worker



'I have found a career that I am really interested in pursuing.'  
Jordan, Apprentice Building Management Systems Engineer

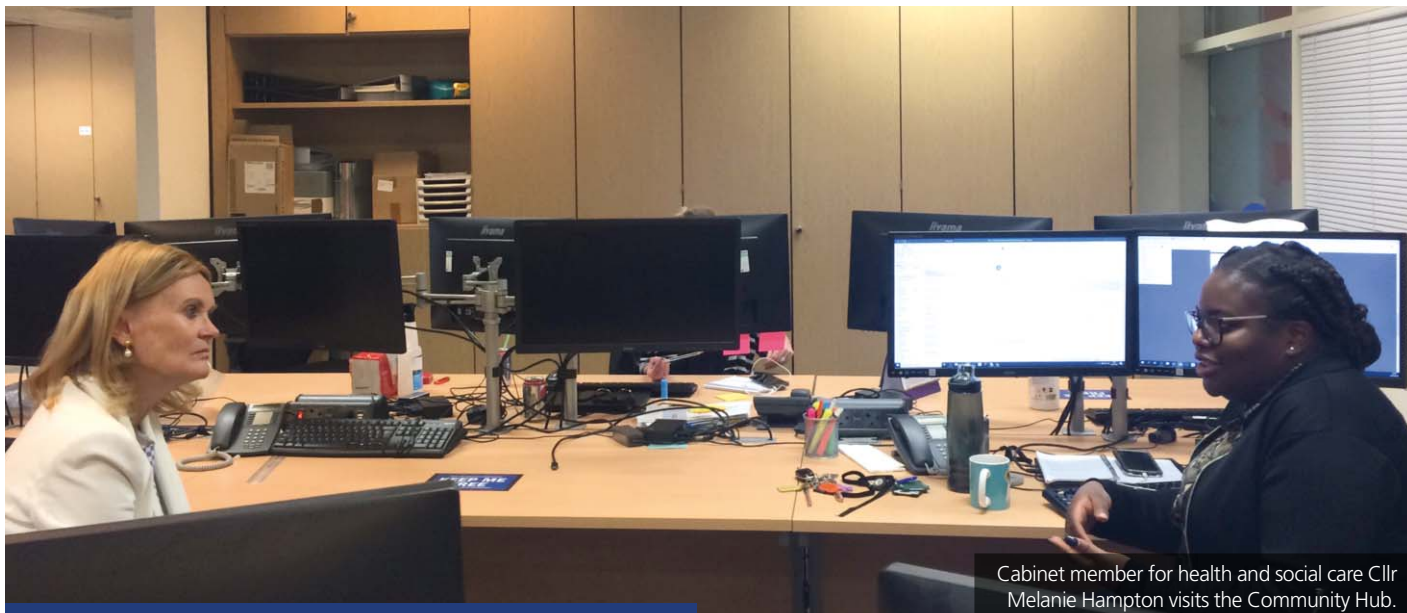
Work Match  
securing jobs for local people

"As the borough gets back on its feet after the Covid-19 restrictions, many people may be finding that they need to find a new job closer to home or they are uncertain which direction to take after recently becoming redundant. Work Match is now working with hundreds of residents who have contacted the jobs service since lockdown began.

"Our expert team is here to provide trusted advice and help with your CV, training or simply confidence-building so that you are ready for the right opportunity when it comes up. Local employers are increasingly turning to Work Match to recruit skilled candidates who are ready for work, so do get in touch with Work Match to get the best chance at success."

For jobs and training opportunities in administration, construction, healthcare, hospitality and more, sign up at [wandsworthworkmatch.org](http://wandsworthworkmatch.org)





Cabinet member for health and social care Cllr Melanie Hampton visits the Community Hub.

## Taking care

One of the legacies of the Coronavirus Pandemic in Wandsworth will be positive – the council’s adult social care team has come up with new, better ways of working which will improve care for years to come.

At the start of the lockdown the Wandsworth Community Hub was set up as a triage service for people who needed help. Staff were brought in from all over the council, and it has dealt with thousands of calls. Now plans are being drawn up to keep a similar single point of contact into the future.

Health and care teams have used the opportunity to speed up the integration of health and social care, with council social workers and the NHS working together on a much faster, streamlined process to get older and vulnerable people out of hospital more quickly and back home where they can receive specialist care to get back on their feet. Meanwhile the council’s social isolation advisor Prof Rusi Jaspal has created videos and blogs on how to manage feelings of isolation, fear and loneliness. If anyone has care and support needs please call **020 8871 7707**

## Tell us about your lockdown

The Coronavirus has had a massive impact on people’s lives and the council is working hard to support local residents and businesses during this unprecedented time.

Please share your views to help us build a better picture of the impacts and target support where it is most needed. We want to know about how the pandemic impacted your life, what your concerns are for the future, what support you have accessed or still need, how you get your information and how you feel the council has managed its pandemic response. Take a brief survey at [haveyoursay.citizenspace.com/wandsworth/coronavirus/](https://haveyoursay.citizenspace.com/wandsworth/coronavirus/) by July 19

## Ending rough sleeping

A council action plan aims to help prevent rough sleepers from returning to the streets as the lockdown is eased.

130 rough sleepers have been found accommodation so far during the pandemic and the new plan will make sure everyone has an offer of accommodation before the end of August plus ongoing support for health issues, employment, further education, immigration and benefit advice.

Cllr Kim Caddy, Cabinet Member for Housing, said: “Covid-19 has given us a once in a generation opportunity to support our rough sleepers to get off the streets and into sustainable tenancies.”

Wandsworth is reaching out to landlords with self-contained studio or one-bed flats to let. Email [lisa.cobbinah@richmondandwandsworth.gov.uk](mailto:lisa.cobbinah@richmondandwandsworth.gov.uk) or [lynn.hemming@richmondandwandsworth.gov.uk](mailto:lynn.hemming@richmondandwandsworth.gov.uk).



# Don't miss out on art

Miss your favourite #WAFinYourLiving Room show? Live shows may have ended but the fringe team promise to keep bringing you shows until shielding is over.

The Wandsworth Arts Fringe is a highlight of the Wandsworth cultural calendar. This year, instead of cancelling it, the council honoured the arts grants it awarded and as many shows as possible were delivered online. It meant people could enjoy culture during lockdown and artists could show their work.

And it proved a great success, with about 24,000 people watching live-streamed and recorded shows.

The council's arts team is also busy working with arts organisations and local artists to help the sector get back on its feet post-Covid. If you want to get in touch to discuss how they can help you, email [arts@wandsworth.gov.uk](mailto:arts@wandsworth.gov.uk)

Go to [wandsworthartsfringe.com](http://wandsworthartsfringe.com) to see what you missed first time or watch your favourite shows all over again. Here are some of the highlights.

**WANDSWORTH ARTS**  
**FRINGE** IN YOUR LIVING ROOM

Max Morton: Sisterson Foods. An honest, poetic testimonial about struggling with mental health



Action Space: Four new film shorts featuring Wandsworth Artists

Photo: Pardi Kapil



Photo: Richard Stratton

Blackshaw Theatre Company: The Final Adventure of Frankie Fightwell. Suitable for all ages

Rogue Opera: A journey through some of opera's greatest hits.



Alena Skalova: Siddhartha's Stone. A short visual storytelling piece inspired by the book.





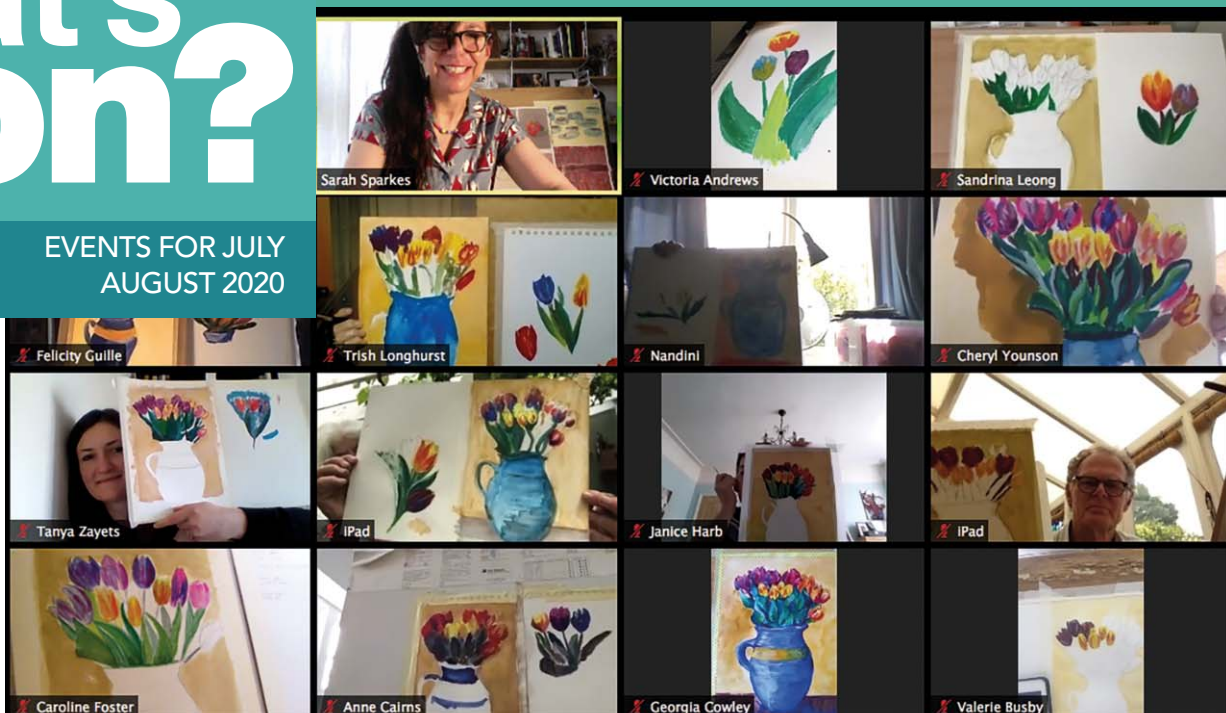
# what's on?

EVENTS FOR JULY  
AUGUST 2020

## How to be listed

Send details (including access for people with disabilities) to: [whatson@wandsworth.gov.uk](mailto:whatson@wandsworth.gov.uk)

We cannot guarantee that your entry will be inserted. This is a free service. The information in this guide has been provided by the advertisers themselves. Wandsworth Council accept no responsibility for the accuracy of the information or for any event not organised by the council.



## ONLINE ART COURSES

Short three-week online courses at Putney School of Art and Design include Botanical Drawing, Illustration and Introduction to Drawing amongst many others. You can join from the comfort of your own home with expert guidance and learn from each other too. Visit the website to find out more about this, plus the summer school programme and Open Studio sessions. [enablelc.org/psad/about](https://enablelc.org/psad/about)

## Abundance Project

The project harvests excess fruit from gardens and either gives it away in the community or produces vinegar and cider to ensure nothing goes to waste. Sign up as a picker or to share fruit from your tree through the website [abundancesouthfields.com](https://abundancesouthfields.com)



## Active Chats

Active chats from Age UK Wandsworth matches isolated older people with trained telephone befrienders who will call up for a weekly chat and to work through some gentle seated exercises. All exercises have been designed by a professional personal trainer and physiotherapist. [ageuk.org.uk/wandsworth/our-services/active-chats](https://ageuk.org.uk/wandsworth/our-services/active-chats)

## Room For Work

A course for skilled workers aged 40+ including workshops to help you master new skills or develop skills you already possess as well as learn techniques that will improve your employability chances.

Call Sonia Wilson on 07989448237 or email [Sonia.wilson@richmondandwandsworth.gov.uk](mailto:Sonia.wilson@richmondandwandsworth.gov.uk)

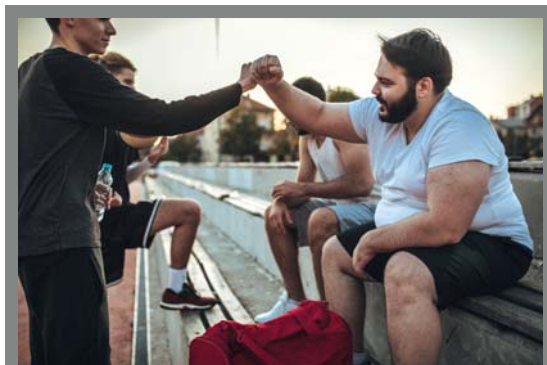
## Carers' support groups

The Wandsworth Carers Centre runs a range of support groups for carers, and is currently delivering them via Zoom. [carerswandsworth.org.uk](https://carerswandsworth.org.uk)



## Summer reading challenge

Read books, earn badges and have fun! [summerreadingchallenge.org.uk](https://summerreadingchallenge.org.uk)



## Guys Get Active

Been meaning to get into exercise but don't know where to start? Guys Get Active is a weekly exercise or football sessions, nutritional advice and support with a weekly weigh in, all specifically designed for men who want to lose weight. [enablelc.org/guysgetactive](https://enablelc.org/guysgetactive)

## Personal Development Course

The council's Lifelong Learning Team has a range of free courses this summer starting July 23 to help you develop your skills and become more employable, including

- Take the fear out of interviews
- Building an Effective CV
- Preparing for a new future
- Personal Behaviour for Success
- Resilience

For details of all courses [wandsworthlifelonglearning.org.uk](https://wandsworthlifelonglearning.org.uk)



## Doing it online

Using our website helps keep your council tax bills low

### Report a waste problem

[wandsworth.gov.uk/waste](http://wandsworth.gov.uk/waste)

### Request a housing repair

[wandsworth.gov.uk/housingonline](http://wandsworth.gov.uk/housingonline)

### Search planning applications

[wandsworth.gov.uk/planningregister](http://wandsworth.gov.uk/planningregister)

### Report a street problem

[wandsworth.gov.uk/streets](http://wandsworth.gov.uk/streets)

### Apply for a school place

[eadmissions.org.uk](http://eadmissions.org.uk)

### Book an MOT

[wandsworth.gov.uk/MOT](http://wandsworth.gov.uk/MOT)

### Report noise and nuisances

[wandsworth.gov.uk/noise](http://wandsworth.gov.uk/noise)

### Apply or renew a parking permit

[wandsworth.gov.uk/parkingpermits](http://wandsworth.gov.uk/parkingpermits)

### Report graffiti for removal

[wandsworth.gov.uk/graffiti](http://wandsworth.gov.uk/graffiti)

### Report an abandoned vehicle

[wandsworth.gov.uk/abandonedvehicles](http://wandsworth.gov.uk/abandonedvehicles)

### Tell us if you are moving in or out of Wandsworth

[wandsworth.gov.uk/MIMO](http://wandsworth.gov.uk/MIMO)

### Enquire about your housing options

[wandsworth.gov.uk/housingoptions](http://wandsworth.gov.uk/housingoptions)

## Pay it online

It's now easier to pay online at [wandsworth.gov.uk/payments](http://wandsworth.gov.uk/payments)

### Pay your council tax

[wandsworth.gov.uk/paycounciltax](http://wandsworth.gov.uk/paycounciltax)

### Pay a parking fine

[wandsworth.gov.uk/parking/payment](http://wandsworth.gov.uk/parking/payment)

### Pay your rent

[wandsworth.gov.uk/rents](http://wandsworth.gov.uk/rents)

### Pay for a marriage or civil partnership ceremony

[wandsworth.gov.uk/ceremonypayment](http://wandsworth.gov.uk/ceremonypayment)

### Pay your business rates

[wandsworth.gov.uk/paybusinessrates](http://wandsworth.gov.uk/paybusinessrates)

### Pay a waste or littering penalty

[wandsworth.gov.uk/waste-enforcement](http://wandsworth.gov.uk/waste-enforcement)

## Talk to us online

### weekly e-newsletter

[wandsworth.gov.uk/enews](http://wandsworth.gov.uk/enews)



[facebook.com/wandsworth.council](https://facebook.com/wandsworth.council)



[twitter.com/wandbc](https://twitter.com/wandbc)



[instagram.com/wandsworth\\_council](https://instagram.com/wandsworth_council)

## My Account

Create an account and you will only have to sign in once to access the main council services.

[wandsworth.gov.uk/myaccount](http://wandsworth.gov.uk/myaccount)



**Wandsworth Report It** makes it easier for anyone to report problems like flytipping, graffiti and other environmental issues. Search for the Wandsworth Report It app on the Apple, Android or Windows app store.

## Other contacts at the council

### Adult Social Services

(020) 8871 7707

### Births, Deaths, Marriages and Voting Hotline

(020) 8871 6120

### Early Years and Childcare Hotline including Family Information Service and After School and Holiday Play Centre bookings

(020) 8871 7899

### Environmental Services

including noise, pest control, private housing and licensing  
(020) 8871 6127

### Finance Hotline including benefits, council tax, rents and business rates

(020) 8871 8081

### Housing Hotline including housing management and repairs, service charges, home

### ownership, homelessness and housing advice

(020) 8871 6161

### Parking and Streets Hotline including concessionary travel, blue badges, MOTs, highways and skip licensing and bay suspensions

(020) 8871 8871

### Planning and Building Control hotline including Community Infrastructure Levy (CIL), land searches and street naming and numbering

(020) 8871 7620

### Schools and Admissions

(020) 8871 7316

### Waste Hotline including rubbish, recycling and litter

(020) 8871 8558





**We're open  
for business**

Put your £ where your  
❤️ is and shop local

**#Shoplocal #supportlocal  
#open4business**

