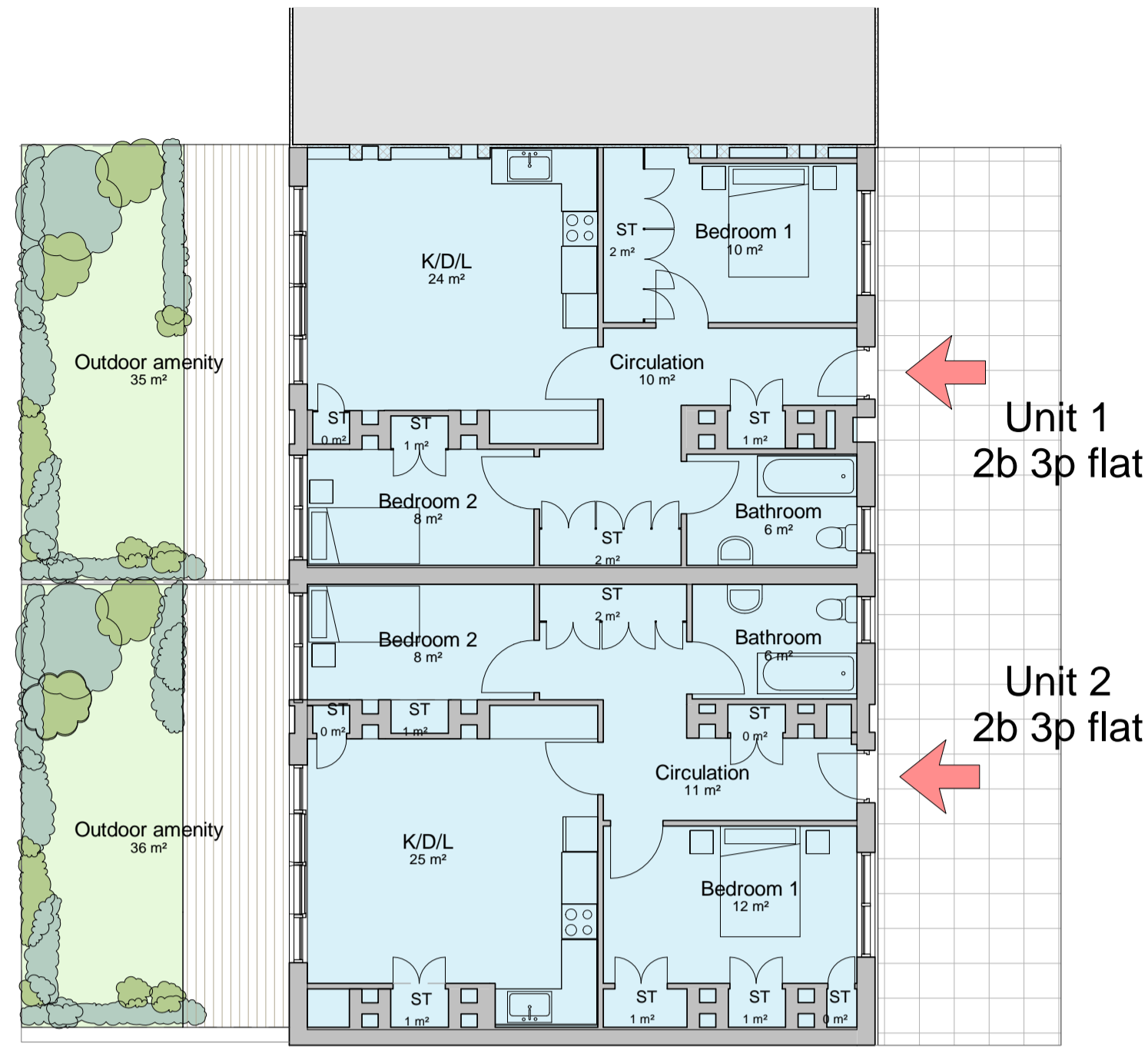




Elevation - east
1 : 100



Ground Floor Area 1
1 : 100



Elevation west
1 : 100

Accommodation Schedule per unit

Unit 1

K/D/L	24m ²
Bedroom 1 incl st	12m ²
Bedroom 2 incl st	9m ²
Bathroom	6m ²
Circulation	10m ²
Storage	3m ²
Outdoor amenity	35m ²

Unit 2

K/D/L	25m ²
Bedroom 1 incl st	14m ²
Bedroom 2 incl st	9m ²
Bathroom	6m ²
Circulation	11m ²
Storage	3m ²
Outdoor amenity	36m ²

Key

Housing Type

2 bed 3 person 69 to 72m²

Entrance to individual flats

Notes Area 1:

Housing mix: 2 x 2b 3p flats

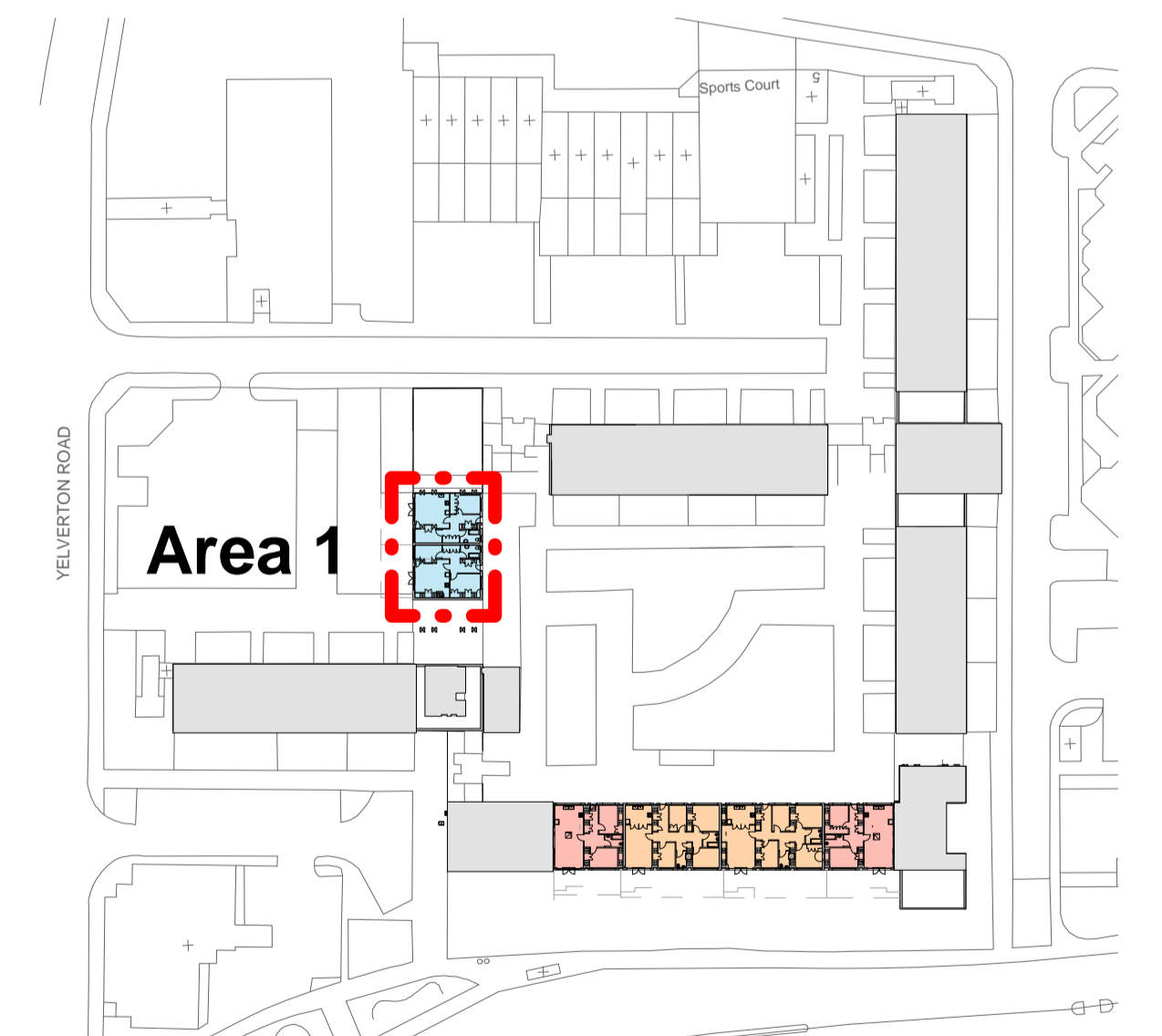
Area 1 GIAs are inclusive of the existing columns. These areas can be used as storage for the adjacent rooms subject to service runs. Unit 1 and 2 are both 2b 3p flats but each unit has a slightly different floor area because of the position of the existing columns.

Area 1

Total GEA (Units 1 & 2):	156m ²
Total GIA: (units 1 & 2):	143m ²
Unit1 GIA	68m ²
Unit 2 GIA	72m ²



Scale 1 : 100 @ A1 and 1 : 1000 @ A1



Key Plan 1
1 : 1000

