

# Brightside

The magazine of Wandsworth Council

Issue 180 June 2017



New home for flower market

Wandsworth 'best for small business'

Honouring Victoria Cross heroes

Borough-wide 20mph limit goes live



Delivered to 140,000 homes - Balham Battersea Earlsfield  
Furzedown Putney Roehampton Southfields Tooting Wandsworth



# FOSTER

**Be there** for a young person in Wandsworth

**and we'll be there** for you

To find out more visit [wandsworth.gov.uk/fostering](http://wandsworth.gov.uk/fostering)  
or phone **(020) 8871 6666** (Quote ref no: AD.1184)







Local schools and the wider community are at the centre of regeneration in Nine Elms. Here Ravi Govindia pays a visit to a Chelsea Fringe event with pupils of St George's School.

# Investing in our future

**“ A local resident came to visit me in my surgery recently – let’s call her Marcia. She was in her 30s, rents a flat in Balham and is married with a young child. As a family they are outgrowing their home. They want to buy but are worried that Wandsworth is unaffordable.**

We all know somebody like Marcia – it might be your story, or that of your son or daughter. London is a fabulous city but it can also seem out of reach. Helping people like Marcia is the reason why I became council leader.

During the election there was talk about how we can make Britain better and fairer. The job of councils like Wandsworth is to translate what can seem like lofty ambitions into real actions. Let me explain how.

A strong economy for us is as much about supporting shopkeepers in Tooting as it is about bringing the likes of Apple to our borough. We are doing both by investing in our town centres while overseeing billions of pounds of investment in places like Nine Elms, where 25,000 jobs will be created. If you don’t think your neighbourhood is benefitting directly then I urge you to turn to the centre pages.

I want every person living in Wandsworth to have a chance to share in the Nine Elms success story. If you are looking for a new job or if are worried about what your children will do when they leave school our Work Match website lists the opportunities that are available - opportunities that will expand when the new Apple HQ opens in 2020. We’re also launching a scheme to attract bright young people to public service and a social care academy to recruit the best social workers.

Yes, we are working hard to keep Wandsworth a great place to live with the lowest average council tax in the UK, but also to build a strong local economy because it brings jobs and new homes. Last year we built more homes than every other borough apart from one. Recently I went to Battersea Reach where 1,350 new homes will be completed soon, 330 of which will be available at discounted rents or available through shared ownership. These are affordable homes for people like Marcia.

There is much more work to do, but we have our sleeves rolled up turning ambitions for our country into something felt across our neighbourhoods.

**Ravi Govindia, Leader of Wandsworth Council**

**Inside**  
June 2017

[www.wandsworth.gov.uk](http://www.wandsworth.gov.uk)

Cover photo: New Covent Garden Flower Market, see page 11.

New playground for Battersea Park	4	New home for Flower Market	11
20mph speed limit introduced	5	How to own a shared ownership home	14
Oldest resident turns 108	6	How Work Match get local people into employment	15
Wandsworth unites against environmental crime	7	Investment across Wandsworth borough	16-17
New type of car club for Wandsworth	9	Ceremony honours VC heroes	24-25
Help for renters	10	What's On	27
Tunnelling starts on new tube line	10		



# Brand new playground for Battersea Park



**A new children's playground has opened in Battersea Park as part of a major programme of improvements at London's best-loved green space.**

The new playground, designed for children up to the age of 12, is located near the café and boasts some of the latest play equipment. It provides a great family-friendly facility in the eastern side of the park to complement the large adventure playground on the other side near Sun Gate.

It was created as part of a wider £820,000 series of improvements to the park using funds from a variety of sources including half a million pounds from Formula E and a further £250,000 from the developers of the neighbouring Battersea Wharf and Chelsea Bridge Wharf housing schemes, plus a further sum raised by local amenity group

the Friends of Battersea Park.

The park's numerous attractions include a boating lake, grass sports pitches, an Olympic quality athletics track and gym, bike hire, a popular children's zoo, lakeside restaurant, Victorian bandstand, tennis courts, all weather floodlit sports pitches and an impressive Peace Pagoda - a unique London landmark complete with giant golden Buddhas overlooking the River Thames.

It recently retained its prestigious Green Flag Award after it was judged to "boast the highest possible standards, is beautifully maintained and has excellent facilities".

For more information about the park and its attractions visit [www.wandsworth.gov.uk/batterseapark](http://www.wandsworth.gov.uk/batterseapark)

To obtain a copy of  
Brightside in large print  
or audio version  
please telephone  
(020) 8871 7266 or  
email [brightside@wandsworth.gov.uk](mailto:brightside@wandsworth.gov.uk)

## Your Brightside

Your Brightside is distributed by London Letterbox Marketing. We expect all copies of Brightside to be delivered to every home in the borough and pushed fully through the letterbox.

It is produced by the council's corporate communications team. It is the only publication delivered to every household in the borough. We would like to thank all our advertisers for their support. Brightside will consider display advertisements from non-council bodies (excluding recruitment) and reserves the right to decline advertisements. The council neither accepts responsibility for the content of nor endorses any non-council advertisements.

• Editorial (020) 8871 8902

• Advertising (020) 8871 7266

If you have a comment about the magazine please telephone: (020) 8871 8902/6173 or email: [brightside@wandsworth.gov.uk](mailto:brightside@wandsworth.gov.uk)

Brightside is printed on environmentally friendly paper, please recycle.



# 20 mph speed limit introduced borough-wide

## A 20mph speed limit now applies in residential areas across Wandsworth.

New road markings and signage informs drivers that they need to stick to the lower speed limit on all the borough's residential streets.

The change followed a detailed public consultation last year that saw the majority supporting a 20mph limit.

Limits will remain unchanged on Wandsworth's busy main roads and on all Transport for London-controlled Red Routes. Sixty four per cent of people agreed the limit should not be reduced on main roads.

Transport spokesman Jonathan Cook said: "We believe this will make our streets safer for drivers, cyclists and pedestrians. We hope too that improving safety will encourage people to leave their cars at home and travel instead by bike or on foot.

"If we can reduce the number of vehicles on our roads then not only will our streets be quieter and safer but there will be an improvement in local air quality levels as well."

Read more at [www.wandsworth.gov.uk/20mph](http://www.wandsworth.gov.uk/20mph)

“ We hope that improving safety will encourage people to leave their cars at home and travel instead by bike or on foot. ”

## Safer speeds in Wandsworth

A **20mph speed limit** is now in place in all residential streets in the borough.

Busier roads like red routes, A-Roads and most B-Roads are not affected by this change

Reducing speeds will make our streets safer, encourage walking & cycling and help improve air quality.

[www.wandsworth.gov.uk/20mph](http://www.wandsworth.gov.uk/20mph)



What residents said

**59%**

of residents support a **20mph limit** on residential streets

**64%**

of residents said a **20mph limit** should not apply on main roads



# Wandsworth's oldest resident turns 108

Miss Damaris Bryant celebrated her special day with friends and carers at her home in Battersea.

Born in Jamaica on 12 May 1909, Miss Bryant moved to the UK in the 1950s to work as a nurse. She settled in Wandsworth and has lived in the borough ever since. She loves watching the soaps, and never misses Emmerdale or EastEnders.



Miss Bryant is a huge fan of the Royal Family, and looks forward to getting a birthday card from the Queen every year. In one of the last engagements of his mayoral year, Cllr Richard Field paid her a visit. He said: "It's an absolute honour to meet Miss Bryant. Reaching the age of 108 is an amazing achievement."

## Park life

Tooting's Fishponds Playing Fields has opened for a trial period so that local people can use and enjoy it until the beginning of September. Normally it is only accessible for sports bookings, but during this trial it will also be open as a neighbourhood park whenever a pitch is being used and a member of staff is on site.

Check opening times at [enablelc.org](http://enablelc.org). The gates will remain locked at all other times and dogs are not permitted.

## Festival noise agreement

Lambeth Council will reduce noise levels at August's SW4 music festival on Clapham Common following a legal challenge by Wandsworth.

In an out-of-court settlement, Lambeth and the event organisers agreed to lower permitted sound levels and to also turn the music off on August bank holiday Monday at 10pm. The legal action was taken after Lambeth allowed noise levels to increase at last year's festival – sparking a six-fold increase in noise complaints.

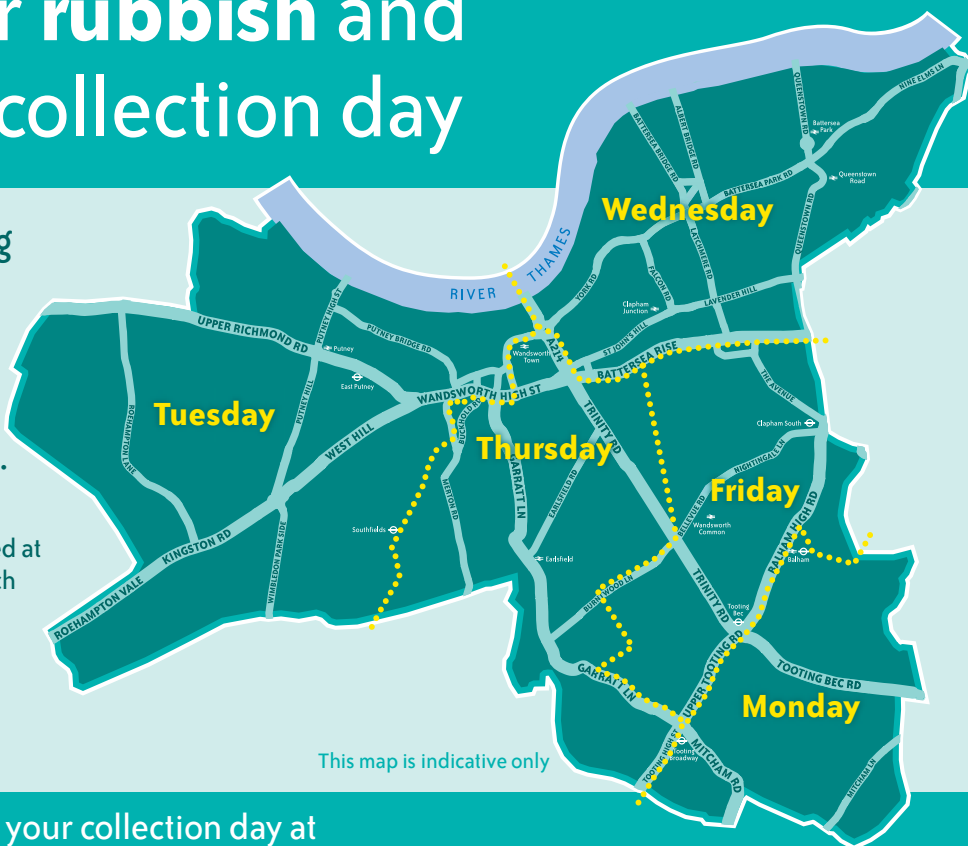
Find out how to report noise issues at [www.wandsworth.gov.uk/noise](http://www.wandsworth.gov.uk/noise)

# Know your rubbish and recycling collection day

Rubbish and recycling is collected **Monday to Friday**.

There will be **no Saturday collections**.

Rubbish and recycling is collected at the same time by one truck, which has two separate compartments for rubbish and recyclables.



This map is indicative only



Find your collection day at [www.wandsworth.gov.uk/collectionday](http://www.wandsworth.gov.uk/collectionday)

# Wandsworth unites against environmental crime

**More local residents, businesses and community groups are working alongside the council to tackle the illegal flytippers and litter louts who blight borough streets.**

There are lots of ways to support the community effort (see list below) and council funding is available to help groups or individuals deliver new projects which help to keep Wandsworth looking its best. Here's a few examples of what's already happening across the borough:

- The Wandle Trust organises regular clean-up days with volunteers donning chest-high waders to tackle rubbish dumped in the river.
- In Tooting, the town centre business partnership is teaming up with the council for a new campaign highlighting the impact of flytipping and the stiff penalties people face if they break the law.
- In Earlsfield, more than 50 members of the Ahmadiyya Muslim Youth Association have been out litter-picking as part of the Great British Spring Clean initiative.
- In Battersea, local residents are planning another clean-up day focussed on the Queenstown area, with support from the town hall staff and local developers.

And across Wandsworth the council's enforcement teams are cracking down on the small minority of people who break the law and cause the mess on local streets. In just one month, they issued 377 £80 fines for littering and tracked down seven flytippers who were issued with £400 penalties. Officers have also successfully prosecuted some of the worst flytip offenders and are preparing for further court proceedings.

The enforcement team also takes action against businesses which don't properly manage their waste and in the same month they issued 16 fines to local traders who were not complying with the law.

The council's environment spokesman Jonathan Cook said: "The council spends huge sums cleaning up flytips and litter as quickly as possible, but to tackle this problem we have to change people's attitudes and behaviour. So alongside tough enforcement action we want more local residents, businesses and other organisations to reinforce the message that Wandsworth's community is united against environmental crime. Please get in touch to find out more and to see how you can get involved."

Everyone can play a part in keeping Wandsworth clean by leaving their waste and recycling bags out on the correct collection days so foxes have little chance to rip them open. Check your collection day using the map opposite and more detailed advice on how to manage your household waste is available online at [w.wandsworth.gov.uk/waste](http://w.wandsworth.gov.uk/waste).



Top two photos: The Ahmadiyya Muslim Youth Association take part in the Great British Spring Clean.

Bottom photo: Wandle Trust volunteers cleaning up the river.

## What you can do

- Contact [jlewis@wandsworth.gov.uk](mailto:jlewis@wandsworth.gov.uk) to join the campaign or show your support on twitter using #KeepWandsworthClean
- Pass on evidence that could help identify a flytipper in confidence to [flytipwitness@wandsworth.gov.uk](mailto:flytipwitness@wandsworth.gov.uk)
- Find the next Wandle Trust clean-up day at [w.wandletrust.org](http://w.wandletrust.org)
- Report flytips on the council website at [w.wandsworth.gov.uk/flytipping](http://w.wandsworth.gov.uk/flytipping)
- Set up your own clean streets initiative with support from the Wandsworth Grant Fund. Visit [w.wandsworth.gov.uk/wgcf](http://w.wandsworth.gov.uk/wgcf)
- Check your home waste collection day opposite or at [w.wandsworth.gov.uk/waste](http://w.wandsworth.gov.uk/waste)





# Go electric in 2017

**As the council prepares to install up to 125 new electric car charging points, more residents can consider switching to zero-emission electric motoring.**

The installation programme will see 20 to 25 'charging stations' created across the borough, each containing between two and five individual charging points.

Currently there are only a handful of public charging points in Wandsworth so this roll-out will bring electric motoring within reach for many more local households.

The new green infrastructure will be part of the Source London network, so members will also be able to recharge their vehicles at hundreds of other locations around the city. Because of their low emissions, electric vehicles help improve local air quality and are exempt from both the London congestion charge and the proposed Ultra Low Emission Zone charges.

Environment spokesperson Councillor Jonathan Cook said:

"We want to enhance the infrastructure in the borough and increase opportunities for people to choose more environmentally friendly lifestyles.

"I hope that the installation of these new charging points will encourage even more people to make the change to electric motoring and play their part in reducing air pollution.

"This is just part of our wider programme of air quality initiatives, including a wide ranging awareness campaign, championing car clubs, and pressing TfL for an outright ban on all diesel buses on Putney High Street and other congested corridors."

The installation programme is expected to take around six months, with zero cost to the taxpayer.

Other steps the council is taking to improve air quality include:

Installing air quality monitoring stations to expose air pollution and help lobby for clean infrastructure.

Environmental theatre productions at local schools to teach children how travel choices affect air quality.

Lobbying the Mayor of London to replace heavily polluting diesel buses.

Banning day time deliveries on Putney High Street to cut traffic and reduce the number of idling lorries.

Supporting car clubs which reduce car ownership and cut traffic levels.

Lobbying for higher capacity rail, bus, riverbus and tube services so more residents can switch from cars to public transport.

Promoting cycling and investing in the borough's cycle network. Wandsworth now has the fastest growing cycle rate in the country according to Government statistics.

Introducing 20mph zones to calm traffic and encourage more cycling and walking.

Developing school travel plans which reduce car use on the school run.

A free airTEXT messaging service warns residents when high pollution levels are forecast.

Ensuring best practice pollution controls are followed on local development sites.

To find out more about how the council is working to improve local air quality visit [wandsworth.gov.uk/airquality](http://wandsworth.gov.uk/airquality).

“ We want to enhance the infrastructure in the borough and increase opportunities for people to choose more environmentally friendly lifestyles. ”





# New 'drive and drop' car club for Wandsworth

A new flexible care sharing services launches on June 21 across Wandsworth which allows members to pick up a nearby vehicle, drive it for as long as they want, then leave it on virtually any on-street parking bay within the borough.

Zipcar Flex will soon be available through the car club company Zipcar. Members can go on the usual Zipcar app and then chose the conventional car club service where cars are returned to the same spot, or the new 'drive and drop' one in which they can borrow from one spot and return to another anywhere in the South London 'zipzone' – useful for short errands and one-way trips across the borough.

There will be 300 'drive and drop' Zipcars across the 'Zipzone', which includes Wandsworth. More are likely to be introduced as new members subscribe.

The new service is the result of a deal between Zipcar and Wandsworth Council. The aim is to help more local people give up the expense and hassle of private car ownership, which in turn reduces parking pressures, reduces overall traffic levels and helps cut air pollution.

Wandsworth Council has been supporting the growth of car clubs for ten years and the borough now has the highest membership level in London with 14,000 registered users.

Find out if car club membership is for you at [wandsworth.gov.uk/carclubs](http://wandsworth.gov.uk/carclubs)

Brightside has teamed up with Zipcar to give readers an exclusive offer. Wandsworth residents can sign up to Zipcar for **FREE** and can claim **60 FREE minutes to Zipcar Flex** by quoting **LBW-FLEX60** when joining at [zipcar.co.uk/flex](http://zipcar.co.uk/flex)



# Help for renters

A special team helps private tenants live in well maintained, safe homes, and helps landlords provide the best private housing they can.

The team:

- Provides advice and training
- Inspects properties, and issues licences for those in multiple occupation (HMOs)
- Encourages tenants to try and resolve issues directly with their landlord, but will look into complaints from private tenants about disrepair or safety issues.
- When necessary, serves notices on landlords to carry out repairs. If landlords do not carry out the work, they could be prosecuted. The work can be carried out by the council and the landlord sent the bill.

Find out more at [www.wandsworth.gov.uk/privatehousing](http://www.wandsworth.gov.uk/privatehousing)

## Angela's story

Single mum Angela was driven out of her rented Battersea home after she withheld rent when her complaints about damp and disrepair went unheeded by her landlord.

The council negotiated a compromise whereby she paid what she owed and the landlord would do the repairs. But the council prosecuted when it emerged that, instead of doing the repairs, he had switched off her gas and electricity in the middle of winter and changed the locks. The landlord and his property company were convicted and ordered to pay a total of £10,000 in fines and court costs, plus £2,000 compensation.



## Welcome to the Soundlounge

A new not-for-profit venue has opened in Tooting Broadway to host free live music and community events.

The Soundlounge opened on the old Dreamland site after a crowdfunding campaign and provides a venue for up-and-coming local groups in south London, plus an arts space, bar and vegetarian café.

The venue has a weekly parents and toddlers morning and is also hoping to run a coffee morning for the elderly. To find out more or to get involved, visit [thesoundlounge.org.uk](http://thesoundlounge.org.uk).

## Jail term for benefit cheat

A benefit cheat has been jailed for two years and ordered to pay back the nearly £18,000 he swindled from the public purse after his crimes were uncovered by council fraud investigators. Dabeer Ul Haque forged documents to obtain higher housing benefit payments and later submitted false details in order to get the keys to a council flat. The council conducts routine checks into hundreds of benefit claims each year, regardless of when they were first made.

# Tunnelling starts on tube extension



Two giant boring machines have started work on the 3.2km tunnel to extend the Northern Line from Kennington to Battersea. Two new stations are being built at Nine Elms and Battersea Power Station.

The project, targeted for completion in 2020, has been championed by Wandsworth Council and helped to kick start the regeneration of Nine Elms which is on course to create around 25,000 new jobs and more than 20,000 new homes.

[www.nineelmslondon.com](http://www.nineelmslondon.com)





# New home for New Covent Garden Flower Market

**After 43 years, the Flower Market at New Covent Garden Market has a new home, half a mile down Nine Elms Lane from its old spot.**

The market dates back to 1670. Its first incarnation was under Charles II's reign, in Covent Garden market square (hence the name). Then in 1974 the largest wholesale fruit, vegetable and flower market in the UK moved to Nine Elms.

In its new location, the market will be starting a new era at the heart of the country's floristry industry. Not only does it supply 75 per cent of London's florists (from high street retailers to high-end event companies), it also hosts a community of expert traders, creative florists, fancy hoteliers, wedding planners, event organisers and all sorts of characters.

The market's flowers end up in London's royal palaces, shops, market stalls, hotels, offices, parties, homes, weddings and funerals.

Many of the traders at the market are third or even fourth generation and hold an exceptional level of knowledge and expertise on flowers, plants, foliage and sundries through the decades and from around the world.

The new building is designed for a better buying experience; with bright lights, simple layout, modern features and a cosy café. Members of the public are able to visit from 8.30am to 10am, Monday to Saturday, to look around and experience this wonderful world of flowers.

[www.nineelmslondon.com](http://www.nineelmslondon.com)



## Wild about Putney

Local photographer Andrew Wilson has released a second volume of his book Wild About Putney and Roehampton featuring shots of the local streets and parks, and views of the river. It's published by Unity Publishing price £21.99.



## Blue badge cheats caught

**Two bank employees, a hospital worker and a woman who works at a local school have all been taken to court and fined after being caught using other people's disabled parking badges.**

Nine people in total were caught misusing "Blue Badge" permits. All were using genuine badges that belonged to disabled relatives or friends.

Abuse of the system is widespread in London and in other big cities because the permits allow holders to park virtually anywhere they like free of charge.

However they can only be used lawfully if the disabled person is either driving or is a passenger in the vehicle.

Transport spokesman Jonathan Cook said: "The scheme exists to help people with mobility problems get out and about, drive to work, visit friends or go shopping. It was not invented to give their relatives a passport to free parking nor allow selfish able-bodied people to use designated spaces genuinely needed by drivers who are disabled."

Anyone with information about blue badge fraud or misuse can email [swlfp@wandsworth.gov.uk](mailto:swlfp@wandsworth.gov.uk) or call (020) 8871 8383



## Mayor Maddan takes office

Putney councillor Jim Maddan has been elected as the new Mayor of Wandsworth. Cllr Maddan, who represents Thamesfield ward, has served as a councillor in Wandsworth since 2002. Prior to entering politics Cllr Maddan, seen here with his partner Linda, was a police officer for 30 years, rising to the rank of Inspector before retiring in 1999. He was cabinet member for adult care and health and chaired the borough's health and wellbeing board, and has also served as national chairman of the Neighbourhood Watch network. His chosen charity for his Mayoral year is the Wandsworth Community Safety Trust.

The council's majority and opposition parties have also announced their new leadership teams.

[wandsworth.gov.uk/cabinet](http://www.wandsworth.gov.uk/cabinet)

## Roehampton charity helps out in Africa

Photo credit - Nahwand Jaff



**Young people from the Get Leading group at the Regenerate youth charity in Roehampton have been to Kenya to work alongside local community leaders helping local children and families.**

They helped build a wall around Rain Edge School and Sure 24 Children's home in Nakuru, which cares for street children and educates young people in need. They also visited Tumaini, a community project providing training and after school activities for young people living in poverty which has a feeding programme funded by Regenerate's social enterprise The Feel Good Bakery. The team worked alongside the Tumaini volunteers preparing and serving food and building a shelter for elderly people that needed a new home. Read more about Regenerate and the Get Leading campaign at [regenerateuk.co.uk](http://regenerateuk.co.uk). Young people can drop in at youth clubs or send Regenerateuk a message via Facebook. If you want to fundraise, volunteer or donate, email [info@regenerateuk.co.uk](mailto:info@regenerateuk.co.uk)



# Think about a career in fostering

**Foster carers working for Wandsworth Council are getting a pay rise as part of the town hall's drive to find more secure and stable homes for vulnerable local children.**

The total weekly payment for looking after a child aged 0 to 10 years old has risen to £366, and the payment for 11 to 18 years olds has gone up to £455. So for example a carer looking after one 12-year-old and one 14-year-old now receives £910 a week.

Higher payments are available for carers who look after young people in need of more intensive support and a new one-off additional payment has been introduced for those who provide emergency foster care.

Finding enough local people who are willing to open their home to a vulnerable young person is a major challenge for all London councils. If there are not enough local places available it can mean that siblings have to be split up or children have to be housed outside their local area and far from their school and familiar surroundings.

All Wandsworth foster carers go through a friendly and thorough induction process to ensure it is the right carer choice for them, and receive ongoing training and support for as long as they continue to look after vulnerable children.

Carers can be married or single, gay or straight, a homeowner or renting, and from any cultural background. You need a spare bedroom and single foster carers, or at least one member of a couple, must be aged between 25 and 60 and be in good health.

More money and support for foster carers is part of a package of measures by the council to improve the accommodation and support for children in their care. Wandsworth is also renovating and modernising a children's home in Balham later this year, which will be managed by an experienced provider with a proven track record in providing the very best outcomes for children in care.

Find out more: [www.wandsworth.gov.uk/fostering](http://www.wandsworth.gov.uk/fostering)

For an informal chat with the team call: (020) 8871 6666



“ I would say to anyone thinking of fostering, that when your motive is to benefit the child it's a brilliant, rewarding experience. ”

## Jeffery's story

Jeffery has been brought up by a foster mum since he was six.

Now aged 19, he is studying at Kingston College and hopes to set up his own events management social enterprise.

“I went into foster care with my older sister and brother, so there were two familiar faces which made adjusting easier. We were always treated the same as my foster mum's three children, we went on the same after-school schemes and did the same activities, and we all went to the same neighbourhood church. My foster mum focused on helping me succeed in school, and there was lots of positive engagement with other professionals, like social workers.

“If I didn't have a good carer it would have been harder to achieve what I have. In the care system you're open to a lot of distractions and it's easy to go down the wrong road. A good carer acts as a moral compass.

“I would say to anyone thinking of fostering, that when your motive is to benefit the child it's a brilliant, rewarding experience. You're benefiting a child's life and pointing them in a positive direction.”

# Claire and Jaiden's shared ownership story

**Hundreds of new shared ownership homes have been built in Wandsworth over the last year as the borough's high home-building rate continues.**

Claire and her son Jaiden were among the many local residents to take advantage of this low cost housing supply, having snapped up a brand new two-bed flat in Balham.

They are now settled into their new home and Claire is encouraging others to take advantage of this part buy, part rent housing option. She said:

"I've lived in Wandsworth my whole life and wanted to stay in the area, but I couldn't afford to buy a home outright. I found out about Shared Ownership on the council's website and filled in an application form.

"I went to the Wandsworth Affordable Housing Open Day where I came across Paragon's development in Balham. I really liked the look of the nice, modern flats, so I registered for one of these properties.

"The process was really smooth – once Paragon had checked my finances, I was invited to a viewing of the show home. I looked at floor plans and chose my preferred apartment. The council's Home Ownership Team and Paragon were extremely helpful. I was scared that I wouldn't know how to go about buying a home or getting a mortgage, but they were there at each step of the journey to tell me what I needed to do next and how long the process would take.

"Jaiden loves his new home. We have space for his toys and when he gets a bit older his playroom will become his very own bedroom."

The council ensures that existing borough residents and workers are at the front of the queue for new part buy, part rent properties built in Wandsworth. The result is that more than 90 per cent of them are being bought by people with an established local connection.

Wandsworth is one of only a few councils to ensure shared ownership homes are offered to households with total incomes below the Mayor of London's salary cap of £90,000. Wandsworth sets a range of maximum total household income levels, starting at £46,000, to ensure lower earning couples can also get on the property ladder.



**Check your eligibility for affordable housing with the council's dedicated home ownership team:**

[wandsworth.gov.uk/sharedownership](https://www.wandsworth.gov.uk/sharedownership)

[housesales@wandsworth.gov.uk](mailto:housesales@wandsworth.gov.uk)

[\(020\) 8871 6016.](tel:0202088716016)

To find out about new affordable housing schemes sign up for the council's weekly e-newsletter at [wandsworth.gov.uk/e-news](https://www.wandsworth.gov.uk/e-news)

## Shared ownership dashboard



**New schemes  
now being built in  
Wandsworth Town,  
Nine Elms and  
Clapham Junction.**



# Front of the queue for local jobs

As major regeneration projects power ahead across Wandsworth, the council's Work Match recruitment team is making sure local residents are first in line for new jobs and apprenticeships.

They have helped over 700 people into work or training, and they only support residents of the Brighter Borough. Here are just two of their success stories:



After being made redundant from a warehouse job, **Perry Radford** found out about training with K+M Decorators through the Battersea Power Station Development Company (BPSDC). At the end of his four week training period he was offered a position as a trainee painter and decorator with the company Cousins.

He said: "I didn't expect I would be in a trade, but now that I am, I'm very happy about it and positive about my career prospects for the future. Growing up very close to Battersea Power Station I feel privileged to be a part of the project and its future development."

**Sarah Beatty** from Tooting, is working on Ballymore's Embassy Gardens development in Nine Elms as the main administrator and office manager.

Sarah met with Work Match after hearing about the service at Wandsworth Job Centre. Within a week of registering, Sarah started her new job.

"At the moment, I work on HR duties, managing the administration site inspection reports and managing leave. I live in Tooting, which is great because I can get to work within 30 minutes and working on a regeneration project in Wandsworth is very exciting.

"I would recommend Work Match to other Wandsworth residents because in my experience you will receive a professional service from a team that actually care about finding you employment in the job that is right.

For the first time since becoming unemployed it was clear that Peter from Work Match read my CV in detail and looked at my achievements to that point and he understood my skills, specifically for job roles that he was recruiting for."



# workmatch

securing jobs  
for local  
people

Visit [wandsworthworkmatch.org](https://www.wandsworthworkmatch.org) to see a list of current vacancies

Call 020 8871 5191 for an informal chat

Email your CV to [wandsworthworkmatch@wandsworth.gov.uk](mailto:wandsworthworkmatch@wandsworth.gov.uk)

# Why Wandsworth really is the brighter and booming borough

Hug  
mu  
tha  
you

## Putney

- New LED lighting
- New footpath, tree work and seating on Dover House Parade
- Road resurfacing and footway improvements on Putney Bridge
- New footpath, tree work and seating in Leader's Gardens
- Road resurfacing and footway improvements in Putney Vale
- Upgrade of public realm between Wimbledon Park Road and Replingham Road
- Putney Vale roads and pavements
- Putney Park Lane improvements

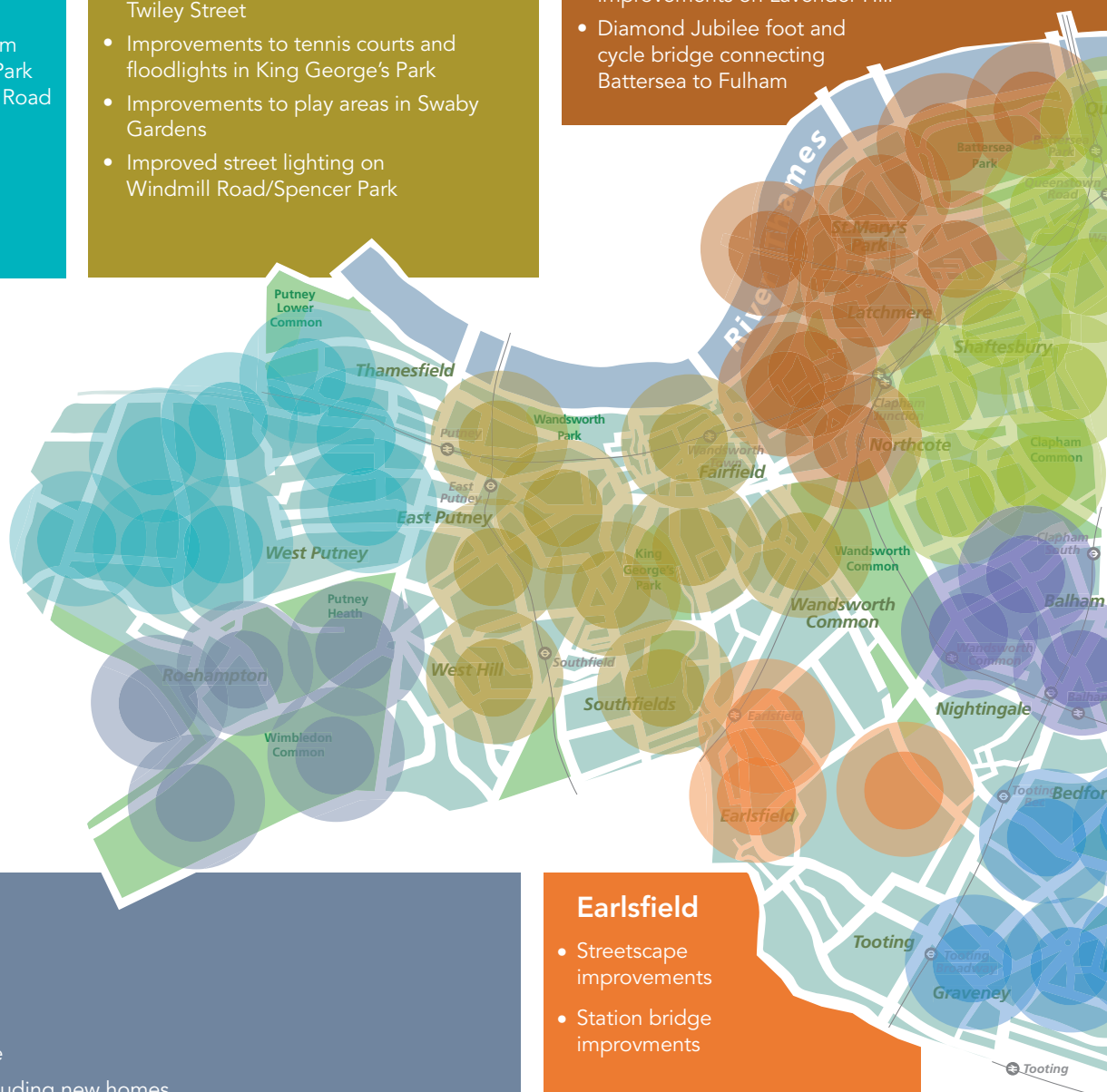
## Wandsworth Town

- Removing the gyratory and redirecting traffic flow away from the town centre
- Restoration of Ram Brewery with new homes, shops and cultural quarter with microbrewery and brewing museum
- New state-of-the-art library and new homes and public square
- Improved Southside shopping centre
- New floodlighting for Wandsworth Bridge
- New ball pen and redesign of play space on Wandsworth Common
- Streetscape improvements on Twiley Street
- Improvements to tennis courts and floodlights in King George's Park
- Improvements to play areas in Swaby Gardens
- Improved street lighting on Windmill Road/Spencer Park

## Battersea

- New and replacement homes for tenants and leaseholders on Winstanley and York Road estates along with a new leisure centre, improved library, community centre and shops and cafes, along with a new square for the Bramlands area.
- Upgraded St Mary's primary school
- New building for St John
- Bosco College
- Station improvements at Battersea Park and Queenstown Road
- Streetscape and lighting improvements on Lavender Hill
- Diamond Jubilee foot and cycle bridge connecting Battersea to Fulham

- Improvement from cyclists Roundabout
- Landscape at northern
- New pedestrian side of the p
- Resurfacing Battersea P
- Gym and st Millennium
- New park b
- New play a Battersea P



## Roehampton

- Improved town centre
- New library
- Improved park
- New community centre
- 1,000 new homes, including new homes for existing council tenants

## Earlsfield

- Streetscape improvements
- Station bridge improvements



ge improvements are planned or already being delivered,  
 ch of which is down to the billions of pounds of investment  
 t is pouring in. Find out what is happening or will happen in  
 ur area over the next few years...

nts separating vehicles  
 s at Queen's Circus  
 t  
 and access improvements  
 part of Falcon Park  
 trian entrance on the east  
 park called Sopwith Gate  
 of 13 tennis courts at  
 ark  
 udio refurbishment at  
 Arena, Battersea Park  
 benches at Battersea Park  
 rea on east side of  
 ark

### Nine Elms

- Battersea Power Station to be restored with new homes, shops and offices
- Nine Elms tube station
- Battersea tube station
- 25,000 new jobs
- Up to 3 miles of Thames Riverside open to the public
- New health clinic at Sleaford Street
- 116 affordable homes available for part rent part buy at the Riverlight development
- 374 affordable homes at Sleaford Street
- 60 affordable homes at Battersea exchange
- 2 new primary schools
- New pedestrian bridge across Nine Elms to Pimlico
- New Thames River Pier and Clipper service
- Upgraded Nine Elms Lane
- 12 acre park linking Battersea Power Station to Vauxhall Cross

### Balham

- Improvements to toddler play space in Upper Tooting Place
- Public realm improvements between Balham Station road and Balham High Road
- Bellevue Road streetscape enhancements, renewing the footways and street lighting
- Public realm improvements under Balham Bridge, including shop front improvements
- Public realm improvements in Hildreth Street, including new granite paving and a new wall art panel in Waitrose car park
- Public realm improvements at Bedford Hill Place on Bedford Hill outside Sainsbury's, including new granite paving, new tiling, new benches and a kiosk to be used for events
- Public realm improvements, including a shop front improvement scheme in Mitcham Lane and Thrale Road

### Tooting

- £5million of TfL investment to improve road safety, including improved crossings, footway widening and junctions improvements where Mitcham Road intersects with Tooting High Street and Garratt Lane.
- New pavements, street trees and better cycling parking completed
- Redevelopment of Springfield Hospital with a new mental health inpatient unit
- Upgrade to St George's Hospital hyper acute stroke service
- 45-unit Extra Care scheme in Franciscan Road
- 51-unit temporary accommodate scheme at Wood and Palladino House

## How are you benefiting?

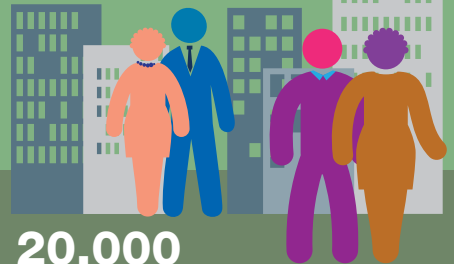
### Lowest average council tax in UK

helped by a

**£13m**

Government bonus for building **new homes**

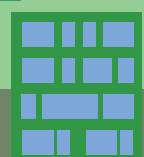
**25,000**  
construction jobs



**20,000**  
permanent jobs

**2 new**  
tube stations

**1,700**  
affordable  
homes  
to part-buy  
or rent





Kirtling Street site



# Tideway in Wandsworth

**Tideway workers have begun work on digging a hole with a 30m diameter on the banks of the River Thames in Battersea, to start building the Thames Tideway Tunnel, known as London's 'super sewer'.**

The hole at Kirtling Street in Battersea will mark the central point of the 16-mile tunnel, which will wind underneath the banks of the river from Acton in the west to Newham in the east at depths of up to 66m.

The super sewer will help tackle the tens of millions of tonnes of raw sewage that currently pollute the river every year, due to a lack of capacity in the current Victorian sewers which can no longer cope with the demand of London's ever-increasing population. The tunnel is due for completion in early 2024.

Of the 24 Tideway sites across London, six of these are in Wandsworth: Putney Embankment Foreshore, King George's Park, Dormay Street, Falconbrook, Heathwall Pumping Station and Kirtling Street.

There is also a site just over the borough border at Barn Elms.

For more information about when these are held, visit [www.tideway.london/the-tunnel/construction-sites](http://www.tideway.london/the-tunnel/construction-sites) and choose the relevant site.

## Kirtling Street

This site is on the southern bank of the River Thames, near to Battersea Power Station, and comprises four areas of land as well as an area extending into the Thames. It will be used to drive the main tunnel to Tideway's site in Fulham in the west and towards Bermondsey in the east.

Work is currently under way to build a shaft for the arrival of a Tunnel Boring Machine (TBM), targeted to be later in the year. Construction of a new jetty to receive deliveries by river will start in June.

## King George's Park

The King George's Park site includes a small part of the northern end of King George's Park.

The site will be used to connect the underground sewer network, which currently pollutes straight to the river, to the main tunnel via a smaller connection tunnel, helping to prevent around 86,000 tonnes of raw sewage overflowing into the River Thames in a typical year.

Main construction is due to start this autumn.

## Dormay Street

The Dormay Street site will be used to connect another sewer overflow point to the main tunnel and to drive a long connection tunnel southwards to King George's Park and northwards to Tideway's Carnwath Road Riverside site in Fulham. This long connection tunnel is known as the Frogmore connection tunnel. At this location, in a typical year, there would be 32 overflows of untreated sewage with a volume of about around 18,000 tonnes into the tidal River Thames. Tideway is currently setting up on site, with main work due to begin in summer.





## Putney Embankment Foreshore

The Putney Embankment Foreshore site is on the southern bank of the River Thames. This site will be used to intercept two overflow points under Putney Bridge, helping prevent around 68,000 tonnes of sewage overflowing into the River Thames in a typical year.

Tideway has nearly completed construction of a temporary slipway, to allow river users continued access to the River Thames during main construction. The main site will be set up in summer, in preparation for the construction of a shaft to which will connect with the existing network and take the current sewer overflows in to the new tunnel.

## Heathwall Pumping Station

This site will intercept an overflow point at the pumping station, preventing 883,000 tonnes of sewage overflowing into the River Thames in a typical year. Work has started on site and we hold regular meetings in the area for residents and businesses.

Water mains replacement works will be complete by late spring, with main work on site set to start later in the year.

For more information about construction sites visit [www.tideway.london/the-tunnel/construction-sites/](http://www.tideway.london/the-tunnel/construction-sites/)

## Being a good neighbour

At sites close to the river, Tideway has committed to using river transport as much as possible to significantly reduce the number of lorries on the roads. Tideway has also committed to hosting regular Community Liaison Working Groups (CLWGs), for local residents and organisations to get involved and receive information about work. These are already in place at Putney, Dormay Street and King George's Park (combined) and Kirtling Street, with more due to be set up over the next year.

## Falconbrook Pumping Station

This site encompasses the pumping station, a disused public toilet and a small area of York Gardens.

Tideway's work at this site will help tackle 700,000 tonnes of sewage pouring into the River Thames in a typical year. The site will be set up from spring 2018, with main work due to start next summer.



## Jobs and skills

Construction of the Thames Tideway Tunnel will create more than 4,000 direct, sustainable jobs, and contractors will employ at least one apprentice for every 50 site employees.

Are you looking for work? Why not visit our jobs and skills page and see if there is a job that could suit you? For more information, visit [tideway.london/our-community/careers-skills](http://tideway.london/our-community/careers-skills) or [wandsworthworkmatch.org](http://wandsworthworkmatch.org)

# Nine Elms: a hive of activity



**Nine Elms**  
On the South Bank

Nine Elms is in full festival mode this month, showcasing a varied programme of events for the London Festival of Architecture 2017.

'Memory' is being explored through a whole series of workshops, screenings, installations, tours and talks in and around Nine Elms, Battersea and Vauxhall throughout June. One of the highlights will be a one-off tour of Battersea Power Station, led by Jim Eyre of WilkinsonEyre Architects, the practice appointed for the refurbishment of the iconic Grade II\* listed building (25 June, 3-5pm. Entry is free and by ballot. See website below for details).

There's more activity around Battersea Power Station as a host of new restaurants, bars, cafés and retailers start opening at Circus West Village. A new one-acre stretch of Thames river path opened up there earlier this year giving people close-up views of the power station that haven't been enjoyed in decades. One hundred new residents have already moved into new flats, bringing a sizable new corner of riverside Battersea to life.

In the coming years more and more of the riverside between Battersea Park and Albert Embankment is being revived and opened up to the public as the Nine Elms regeneration programme continues. The process is well underway and you can now enjoy new views of the river at Riverside Gardens, thanks to new interactive seating by Studio Tord Boontje (pictured above). The rotating seats with their scented planters were inspired by this view of the Thames being one of JMW Turner's favourite painting locations.

For more information, including about London Festival of Architecture 2017, visit [www.nineelmslondon.com](http://www.nineelmslondon.com) or follow @nineelmslondon on Instagram or @nineelmslondon on Twitter.



One of the new businesses to open is Boom Cycle, a high-energy, music-focused fitness studio. Its founders, Hilary and Robert Rowland, have also just moved into one of the new flats. Robert said: "When we finish work at 9pm we know we haven't got far to get home. You see the chimneys and get this great feeling that you are part of it."

## Lick of paint for power station chimneys



**Battersea Power Station's iconic chimneys have been rebuilt and are now being painted.**

All chimneys are expected to have received a base coat by September. A final coat will then be applied ensuring that all chimneys age at the same rate.

All four have had to be painstakingly dismantled and rebuilt by specialist contractors. Each new chimney is visually identical to the original, the only difference being that the new versions use a more modern pattern of steel reinforcement within the concrete. Paint scrapings from the original chimneys were taken to ensure the new paint colour is an exact match.

Watch a video of the painting at [youtube.com/WandsworthBC](https://www.youtube.com/WandsworthBC) or visit [www.batterseapowerstation.co.uk](http://www.batterseapowerstation.co.uk)





“ Wandsworth have been so supportive and been instrumental in the growth of my company ”  
Emily Few Brown

# Wandsworth ‘best for small business’

Wandsworth is the capital’s ‘Best All-Round Small Business-Friendly Borough’ according to the Federation of Small Businesses and local authority umbrella group London Councils.

The authority picked up the accolade at an awards event earlier this year for ‘successfully implementing wide-ranging policies to support and develop the local micro and small business community’.

Local firms can take advantage of a wide range of enterprise support programmes, including:

- Wandsworth Enterprise Week – a free week-long series of talks from top business leaders, workshops, networking opportunities and advice sessions for start-ups and small businesses. This year more than 1,100 local business people went along.
- Specialist help for food and digital and tech companies
- Advice on how to supply London’s fastest growing development area through Supply Nine Elms workshops, events and advice sessions
- One-to-one business advice support

Find out more about all these [wandsworth.gov.uk/yourbusinessyourgrowth](https://www.wandsworth.gov.uk/yourbusinessyourgrowth)

## Emily Few Brown

set up her catering company Spook after receiving support. She said

“Wandsworth have been so supportive and been instrumental in the growth of my company - the guidance has taught me more about my business and business as a whole. My team has grown from 2 to 9 over the last 3 years.”



## Dia Frangelou

is the founder of ethical children’s wear company Little Lights of the World, which won a ‘Dragons Den’ competition during Wandsworth

Enterprise Week. She said “What an incredible week! It was full of great advice from people who have been in the same position and taken the leap to start their own business as well as lots of practical information. I felt privileged to have been part of the event. And winning the Den was the cherry on the cake!”

## Wandsworth facts and figures

- Wandsworth is the favourite place to live in England and Wales for aspiring young professionals (Lloyds TSB)
- Wandsworth has the lowest unemployment rate in inner London
- Small firms with fewer than 10 employees make up almost 93 per cent of Wandsworth businesses and more than 12 per cent of local residents are self-employed
- Two year business survival rates are the highest in inner London, at 74.8 per cent



Help from the Stormont  
Clinic has been invaluable



## One mum's story

**One mum turned to the Stormont Clinic in Battersea when she found breastfeeding did not come as easily as she was expecting:**

"When I left hospital unable to breastfeed and having to express milk for my daughter I was devastated.

"Three weeks later, still expressing and having to supplement with formula because of my daughter's weight problems, I was ready to give up and turn completely to formula. I had also developed painful mastitis. It was only then, at a midwife's appointment, that I was recommended the local Wandsworth Breastfeeding Clinic.

"That morning Sue was running the Clinic. She listened and understood my worries. She was nonjudgemental and gave practical and fantastic help. By the end of the hour and a half - to my amazement - my daughter was breastfeeding!! I left elated. Help from the Stormont Clinic has been invaluable. I now go every week to weigh my daughter who I now breastfeed and to discuss any problems that might have arisen in the week. I am always met with the same warmth and enthusiasm from the team."



# Breastfeeding help for mums

**Wandsworth's health visitors have been highly commended in the UNICEF Baby Friendly initiative for the help they give to the borough's breastfeeding mothers.**

The health visiting team, run by St George's NHS Trust and commissioned by the council, work to promote and normalise breastfeeding, help and reassure mums who are finding it difficult and to make sure women know it is their right to breastfeed anywhere.

Wandsworth mums struggling to breastfeed can also access a network of support groups, clinics and breastfeeding cafes across the borough.

Find out where they are, and get advice at  
[www.wandsworth.gov.uk/breastfeeding](http://www.wandsworth.gov.uk/breastfeeding)

# Homeshare

Our journey, together

## Householder:

- Do you require support around the home? (receive up to 40 hours support each month)
- With regular monitoring and carefully assessed homesharers, selected with confidence?
- Are you seeking companionship in the comfort of your own home?
- Peace of mind that someone keeps an eye on you as well as security at night.

If the answer is yes then call  
Novus Homeshare on  
**0330 0882225**

## Homesharer:

- Are you seeking affordable accommodation?
- Struggling to rent or buy within commutable distance?
- Can you spare 10 hours a week?
- Are you friendly and caring person?
- Would you like to be rewarded for helping your local community?

If the answer is yes then call Novus  
and ask to become a homesharer on

**0330 0882225**

**Anthony says:  
It wouldn't be  
feasible for me to  
live in London any  
other way.**

## Anthony & Tom

We matched student nurse Anthony, 23, with Tom, 93. They share a four-bedroom house in Hatch End, North-West London.

Tom, who has lived alone since his wife Mary died 11 years ago, says: 'Homeshare has made a real difference as Anthony keeps me company.'

Anthony says: 'It wouldn't be feasible for me to live in London any other way.' Despite their 70 year age difference, they are very respectful of each other, they eat together a few times a week and Anthony liaises with the family when needed.

**Tom, who has lived alone  
since his wife Mary died 11  
years ago, says: Homeshare  
has made a real difference  
as Anthony keeps me  
company.'**





# Support for carers

**If you provide unpaid care for a disabled, ill or older family member or friend, you are a carer and could get support.**

The Wandsworth Carers Centre provides information, advice and advocacy, runs courses and provides complementary therapies, runs dementia cafes and offers respite. Call (020) 8877 1200, email [info@wandsworthcarers.org.uk](mailto:info@wandsworthcarers.org.uk) or visit [carerswandsworth.org.uk](http://carerswandsworth.org.uk)

Parents and carers of children or young people with special educational needs or disabilities (SEND) can get help from the council's Family Information Service. They run a Disabled

Children's Register and the popular WAND Card scheme that enables families with SEND members to get extra support and discounts when they're out and about. Call (020) 8871 7899, email [fis@wandsworth.gov.uk](mailto:fis@wandsworth.gov.uk) or text 07797 805 456.

Carers providing care and support to an adult in Wandsworth can ask the council for a Carer Assessment to see if you qualify for support. Find out more at [www.wandsworth.gov.uk/carers](http://www.wandsworth.gov.uk/carers).

The Wandsworth Young Carers Project helps people under the age of 18. Call (020) 7228 2566 or email [wandsworthyoungcarers@family-action.org.uk](mailto:wandsworthyoungcarers@family-action.org.uk).

Unpaid carers of adults can take advantage of a free respite service from Carers Partnership Wandsworth.

One carer, Lori, said the service has been invaluable to her and her husband John, who has dementia, and has finally enabled her to get out and have time to look after herself. She said: "This was a major first step for John and I - other carers should take it for sure! It really gives me peace of mind to know that John can accept someone else in the home and I can do things like go to the dentist."

For more information and to see if you are eligible, call [\(020\) 8877 1200](tel:02088771200) or email

[support@wandsworthcarers.org.uk](mailto:support@wandsworthcarers.org.uk).



## Talking Healthcare in south west London



The NHS wants to engage with local people on a draft Five Year Forward Plan to improve local health care services and make them sustainable for the long term.

Read a summary of the plan at: [bit.ly/STPsummary](https://bit.ly/STPsummary)

To take part in the discussion

- Follow [@SWLNHS](https://twitter.com/SWLNHS) on Twitter, using the hashtag [#talkinghealthcare](https://twitter.com/talkinghealthcare)
- Invite NHS spokespeople to your meetings to talk about the Five Year Forward Plan
- Email: [swlccgs@swlondon.nhs.uk](mailto:swlccgs@swlondon.nhs.uk)
- Write to South West London NHS, 5th floor, 120 The Broadway, Wimbledon SW19 1R

**Start well, live well, age well**

## Where to turn for mental health help

Talk Wandsworth is a new service offering confidential support for people experiencing mild mental health conditions such as anxiety, low mood and stress.

It aims to help more than 25,000 people in Wandsworth by 2019 and offers face-to-face counselling in a range of venues, as well as providing online help 24/7 via Skype and on-line mental health services SilverCloud and ieso.

A quarter of us will experience a mental illness at some point in our lives and ensuring people have access to the right support and advice is crucial. People can either get in touch directly or via their GP. Visit [talkwandsworth.nhs.uk](https://www.talkwandsworth.nhs.uk)

People struggling with their mental health can also pop in to the Tooting Recovery Café.

This offers safe and supportive space for people aged 18+ who are struggling to cope. There's no need for an appointment or GP referral - just turn up. It offers mental health support, advice, hot meals and drinks and just a place to chill out or chat.

The café is at 966 Garratt Lane and is open Monday to Friday 6am-11pm and weekends and bank holidays from noon to 11pm. Email [recoverycafe@hestia.org](mailto:recoverycafe@hestia.org) or call [07794 394920](tel:07794394920).



The then Mayor of Wandsworth Cllr Richard Field and Lance Sgt Johnson Beharry VC unveil the memorial tablets

# Ceremony honours VC heroes

**Three brave soldiers awarded Britain's highest award for gallantry – the Victoria Cross – were honoured at a town hall ceremony.**

Memorial stones were laid in the Garden of Remembrance for Cpl Edward Foster, 2nd Lt Reginald Haine and A/Capt Arthur Lascelles, who all came from Wandsworth and won VCs in the First World War.

Descendants of two of the three men were there, along with representatives of their regiments, the leader of Wandsworth Council, Ravi Govindia and the leader of the opposition Cllr Simon Hogg. Lance Sgt Johnson Beharry VC who was awarded his Victoria Cross during operations near Basra, Iraq in 2004, was also there.

Read more about their stories at [www.wandsworth.gov.uk/vcwinners](http://www.wandsworth.gov.uk/vcwinners)



Council deputy leader Cllr Jonathan Cook lays his wreath of poppies in memory of the three brave VC winners





## Ernest Bevin College

### Open Events Summer 2017

**Open Mornings:** Tuesday 20th June & Friday 23rd June 9am-11am

Ofsted Outstanding 2011, 2012

Beechcroft Rd, Tooting, London, SW17 7DF  
020 8672 8582  
mail@ernestbevin.london

[www.ernestbevin.london](http://www.ernestbevin.london)

## WANDSWORTH COUNCIL MOT CENTRE

# BOOK AN MOT

We don't sell repairs, so:  
**No Hidden Extras**

Call (020) 8871 6761  
or email [mot@wandsworth.gov.uk](mailto:mot@wandsworth.gov.uk)  
to book your MOT

8am - 4pm Monday to Friday  
Frogmore Depot, Dormay Street,  
Wandsworth, SW18 1EY

MOT Testing Class 4, 5, 7

AD.1190 (5.17)

THE BRIGHTER BOROUGH  
Wandsworth

# ‘Shiver me timbers’

**A fearsome looking pirate ship - The Golden Ghost – has set sail for Earlsfield and will soon be the centrepiece of the new-look Swaby Gardens playground.**

The replica pirate vessel, complete with ropes, nets, slides and a lookout tower, is being introduced along with a number of other improvements voted for by local residents.

Work to “anchor” the ship will begin later this year.

The £163,000 Swaby Gardens makeover is being paid for by the Wandsworth Local Fund. This council run scheme provides grants for new or upgraded community facilities using funding collected from development projects in the surrounding area. Local people can nominate new projects that could benefit their neighbourhood so long as they contribute to at least one of the following aims:

- make the area feel safer
- improve parks, commons and riverside walks
- repair roads and pavements
- improve facilities for cyclists or
- Create or improve green spaces

The level of funding available in each area depends on the amount of development funding collected within that neighbourhood.

If you have a project you wish to nominate, then contact your local councillor. You can find out who this is at [www.wandsworth.gov.uk/councillors](http://www.wandsworth.gov.uk/councillors)



campaigns | branding | brochures | flyers | adverts | banners | newsletters | digital | signage | forms | and more

WANDSWORTH  
**Design  
& Print**

**your message, brought to life.**

[www.wandsworthdesignandprint.com](http://www.wandsworthdesignandprint.com)

[wdp@wandsworth.gov.uk](mailto:wdp@wandsworth.gov.uk)

020 8871 7508

Part of Wandsworth Trading Company



# what's on?

EVENTS FOR JUNE  
TO AUGUST 2017



**Saturday June 17, 12noon to 6pm**

## **Live at the Bandstand**

Live at the Bandstand is back! Head on down to Battersea Park for a country and western hoedown – with live bands, a DJ, a bar, food stalls, a small funfair, and games/workshops for children. Suitable for all ages.

**Free, no tickets required, just turn up**

Bandstand in Battersea Park, SW11 4NJ [www.enablelc.org/bandstand](http://www.enablelc.org/bandstand)

## **How to be listed**

Send details (including access for people with disabilities) by Monday July 10 to: [whatson@enablelc.org](mailto:whatson@enablelc.org)

We cannot guarantee that your entry will be inserted. This is a free service. The information in this guide has been provided by the advertisers themselves. Wandsworth Council and Enable accept no responsibility for the accuracy of the information or for any event not organised by the council or Enable.

What's On is compiled by Enable Leisure and Culture, a registered charity.



**Saturday June 17, 12noon to 8pm**

## **Big Day Out at Furzedown Festival**

Furzedown – on – Sea will feature live bands and dance groups, stalls, food and drink, old fashioned fairground games, children's arts and crafts, skateboarding, a bouncy castle and donkey rides.

**Free, just turn up**

Furzedown Recreation Ground  
For a full list of events  
[www.furzedown.net](http://www.furzedown.net)

**Saturday June 17, 11am to 3pm**

## **Dover House Estate Table Top Sale**

The residents of the Dover House Estate will be holding their popular Table Top Sale by selling their unwanted possessions, mixing and mingling, and generally having fun in a very pleasant part of Wandsworth.

As usual, items on sale will include clothes, toys, games, furniture, books, CDs, DVDs (or even videos), crafts, plants, cakes, food, and much more, both pre-loved and new, in a fun-packed and

festive event. Buyers, on the day, if you see it on the sellers' tables, it's for sale! Everyone is welcome to this free afternoon of fun, and bargain basement retail therapy at: Dover House Estate Table Top Sale, The Pleasance, SW15 5HG (off Dover House Road) For further details, please contact: [dhera.london+community@gmail.com](mailto:dhera.london+community@gmail.com)

**Saturday June 24, 3pm to 5pm**

## **Roeampton Garden Society Summer Show**

See the vegetables, fruits and flowers grown by local gardeners plus produce stall, teas and homemade cakes, tombola and auction of fresh produce at

the end of the show. St Margaret's Church Hall, Putney Park Lane, SW15 5HU

**Donation on door, wheelchair accessible**

**Saturday July 1, 11am - 3pm**

## **High View Primary Summer Fete**

Join the community at High View for our annual summer fair and fundraiser. Featuring fairground rides, traditional stalls, dancing, food, face-painting and a fantastic raffle supported by local businesses. Fun for all the family. Free entry. High View Primary School, Plough Terrace, SW11 2AA

**enable**  
leisure & culture

Children's events  
outlined in yellow

# what's on?

EVENTS FOR JUNE  
TO AUGUST 2017



**Saturday July 1,  
12noon to 9pm**

## **Falcon Road Heritage Festival**

Music and dance at the Wandsworth Radio stage, Shillington Gardens - live and broadcasting all day! Stalls, events, activities, animals, food, sports, falconry, local heritage, arts and loads more!

**Sunday July 2, 10am to 4pm**

## **Exhibition: Tooting Common Maps**

Opportunity to view a collection of maps and drawings relating to parks and green open spaces in Wandsworth as part of the Tooting Common Heritage Project. The collection includes printed, hand-drawn, and hand-finished maps and documents from the inter-war period up until the 1990s when the last municipal landscape designers quit the Council. There will be a

focus on Tooting Common maps but a small selection of maps from other parks and commons will also be made available. Held in Tooting Bec Lido Pavilion. This is a free event and no booking is required. Children are welcome.



**Saturday July 15,  
12noon to 7pm and  
Sunday July 16,  
12noon to 6pm**

## **Foodstock LDN**

Two days of food, drink and music set within the beautiful Battersea Park. With big flavour, gourmet food and tasting sessions, Foodstock LDN is calling out to all foodies to come and tickle your taste buds, sip on refreshing drinks and listen to Summer-Folk music in the glorious



**Sunday June 18, 10.30am, judging at 12.30pm**

## **Battersea Park Dog Show**

The popular dog show returns, where pets can be entered into a class – a choice of pedigree and novelty classes. Entry to the show is free and the fee to enter a class is £1.50 per dog, per class. Entries will be taken on the day from 10.30am. Judging starts at 12.30pm and the winner and five runners up in each class will receive rosettes. Bring the whole family and join in the fun. Battersea Park (near Boules area) SW11 4NJ [www.enablelc.org/batterseadogshow](http://www.enablelc.org/batterseadogshow)



Zadie Xa, Mood Rings, Crystals and Opal Coloured Stones, 2016, still. Courtesy the artist

**Thursday August 3 to Sunday September 24, preview Wednesday August 2, 6.30 to 8.30pm all welcome**

## **Zadie Xa at Pump House Gallery**

From 3 August, in collaboration with PS/Y's programme on Hysteria, Pump House Gallery presents a solo exhibition of new work by London-based Canadian artist Zadie Xa. In her work Xa explores identity, desire and personal fantasy. Employing painting, textile, video, and sound within her storytelling, Xa's current practice is preoccupied with performative presentations where traditional cultural knowledge is passed between diasporic bodies. During the development for this exhibition at Pump House Gallery Zadie Xa presented Basic Instructions B4 Leaving, as part of PS/Y's 'Hysterical X', at Café OTO in December 2016. Artist Ania Bas will be hosting our InHouse workshops.

Workshops will take place on Sundays, 6 August, 20 August, 3 September, 17 September, with a final display on 24 September, 12 – 4pm.

sunshine (we have our fingers crossed already). Do your bit to support local businesses in the area, from Sambrook's Brewery in Battersea and The Butcher and Grill (who kept the air miles down by strolling over from the perimeter of the park), there is a pantry of deliciousness for you to explore and support.

**Tickets: Online advance adults £2, children £1.**

**On the day: adults £5, children £2.50**

British Genius Site, Battersea Park, SW8 4NW [www.foodstock.london](http://www.foodstock.london)

**Saturday July 22,  
2-7pm**

## **Get Active Battersea Festival**

Sports taster sessions, food, music and family activities York Gardens Park, Lavender Road.

**Saturday July 29  
12-7pm**

**The Feel Good Festival** Food, family activities and music, organised by Regenerate at Danebury

Avenue Green, Roehampton. Volunteers are needed to help with setting up, catering and hospitality, stewarding and clearing away - contact Mari Day on (020)3195 9607 or email [mari@regenerateuk.co.uk](mailto:mari@regenerateuk.co.uk) **Free**

**Monday August 14 to Friday August 18**

## **Summer Holiday Junior Tennis Course**

Furzedown Recreation Centre are running a summer holiday course during August for children aged 4-16. The courses are for all abilities and are based on the LTA mini tennis scheme. Skills which can be learnt include improvement of hand and eye co-ordination, body movement, racket handling, team work, fitness as well as having lots of fun and games.

For details of dates, times and costs for all of the above lessons, camps and courses please call 020 8767 6542. Furzedown Recreation Centre





**Saturday July 15, 12noon to 5pm**

### Get Active Wandsworth Festival

A fun, free day packed full of live performances, sports activities, health and nutrition advice, children's entertainment, free NHS health checks, inflatables, craft and food stalls. **Free, no tickets required just turn up!**

King George's Park

[www.enablelc.org/active](http://www.enablelc.org/active)



**Wednesday August 9, 16 and 23, 12noon to 2pm**

### Activity: Mini Beast Hunts

Come and explore the creepy crawlies that lie in the undergrowth at Tooting Common. Children will have the opportunity to hunt, catch and identify some of the mini beasts that lurk

amongst the woodlands and meadows.

Free event. Suitable for ages 4-10 (children must be accompanied by an adult). Booking required. Email:

TCHP@wandsworth.gov.uk to reserve your spot.

### Wednesday August 16 to Tuesday August 29 Drakes Fun Fair

Visit drakes popular children's fun fair in Battersea Park, with tea cups, inflatables and mini train. Fun for all the family! Children's prices vary Battersea Park

**Saturday September 9, 12noon to 10pm**

### Beer on the Common

Tooting Common

**Advance tickets: £8 plus booking fees, on the door £12**

[www.eventbrite.co.uk](http://www.eventbrite.co.uk)



### Battersea Arts Centre

For further information and tickets please visit [www.bac.org.uk](http://www.bac.org.uk)

**Tuesday July 4 to Saturday July 29**

### Extravaganza Macabre

A mischievous musical melodrama experienced in a unique open-air Courtyard theatre, with lashings of drink and picnic fayre completing the festive summer experience.

**Monday July 10 to Saturday July 22**

### Edinburgh Comedy Previews

Another riotous summer of big name comics and bright new talents, ft. Nish Kumar, Sara Pascoe and John Kearns.



### Luna Cinema

Open air cinema across Wandsworth  
Book your tickets for Tooting Common, Wandsworth Park and Battersea Park today!  
[www.thelunacinema.com](http://www.thelunacinema.com)

## Save the date!

**Saturday 7 and Sunday 8, Saturday 14 and Sunday 15 October**

### Wandsworth Artists' Open House

Local artists are invited to take part by adding their home or studio to the programme. Meet artists, and browse and buy art in a relaxed setting. If you would like to take part, but don't have a venue, the council can help you find a suitable space to show your work. Local venues and home owners are also urged to get in touch if they would like to host an event. To find out more, or to register to take part go to [wandsworthart.com](http://wandsworthart.com) or email [arts@wandsworth.gov.uk](mailto:arts@wandsworth.gov.uk).





**July is Scam Awareness Month, and Wandsworth residents are urged to think about their online security.**

If you get an email saying you need to verify or confirm something, how do you know it's genuine? Hover the pointer over the sender's email address or the link – what do you see? Does it really look like the genuine website or email address for that organisation? If not, just delete it. If you're still worried, call the organisation direct - but use an official number you already have, not the one in the email.

On your phone, it's harder to check who's calling because criminals can make the 'right' numbers appear on your caller ID. If a caller is trying to draw your attention to the number displayed, it's actually very unlikely the call is genuine. If you're asked for your four-digit PIN, your full password, to transfer or withdraw money, or to give your card to a courier – disconnect the call. Your bank or the police will never ask you to do this.

**You can report mobile phone scams by forwarding them to 7726 (the keys for SPAM).**

Many people will know of the telephone scam where someone calls you claiming your computer is faulty or hacked and offering to fix it, for a fee. In a new scam, the caller pretends to be from BT reporting a problem with your email or internet. They then say your passwords and bank details need to be changed urgently and ask you to open your computer.

Never give a caller remote access or install any programmes they recommend – your personal data may be stolen. If you are anxious there may really be a problem, put down the phone, wait three minutes and then contact BT direct on 0800 800 150.

Fake helpline ads online, which seem to offer technical support, lead directly to criminals who ask to take over your computer. If you need help, go directly to the manufacturer, not unknown helplines.

If you think you've been a victim, run a virus scan, alert your bank and contact Action Fraud to report the scam on [t. 0300 123 2040](tel:03001232040). More advice: go to [www.citizensadvice.org.uk](http://www.citizensadvice.org.uk) and search 'Scams'.

## Free debt and money advice in Roehampton

**Need help with debt? Come along to free advice sessions at the Western Area Housing Office, Holybourne Avenue, Alton Estate.**

Confidential advice is available on issues such as rent arrears, money management and debt from Council Tax, sales catalogues, loan sharks, store cards and utility bills.

No appointment is necessary, and local residents are invited to come along between 10am and 4pm on 26 June; 31 July; 29 August; 30 September and 27 November to find out more from the council's financial inclusion team.

One man who went to a previous session was struggling financially because of a family illness. He said: "There is no way I would have known what to do – I am so happy this help was also on my doorstep."

You can contact the team directly on [t. 020 8871 6953](tel:02088716953) or email your enquiry to: [financialinclusion@wandsworth.gov.uk](mailto:financialinclusion@wandsworth.gov.uk)



## Doing it online

Using our website helps keep your council tax bills low

### Report a waste problem

[wandsworth.gov.uk/waste](http://wandsworth.gov.uk/waste)

### Request a housing repair

[wandsworth.gov.uk/housingonline](http://wandsworth.gov.uk/housingonline)

### Search planning applications

[wandsworth.gov.uk/planningregister](http://wandsworth.gov.uk/planningregister)

### Report a street problem

[wandsworth.gov.uk/streetproblem](http://wandsworth.gov.uk/streetproblem)

### Apply for a school place

[eadmissions.org.uk](http://eadmissions.org.uk)

### Book an MOT

[wandsworth.gov.uk/MOT](http://wandsworth.gov.uk/MOT)

### Report noise and nuisances

[wandsworth.gov.uk/noise](http://wandsworth.gov.uk/noise)

### Apply or renew a parking permit

[wandsworth.gov.uk/parking/permits](http://wandsworth.gov.uk/parking/permits)

### Report graffiti for removal

[wandsworth.gov.uk/graffiti](http://wandsworth.gov.uk/graffiti)

### Report an abandoned vehicle

[wandsworth.gov.uk/abandonedvehicles](http://wandsworth.gov.uk/abandonedvehicles)

### Tell us if you are moving in or out of Wandsworth

[wandsworth.gov.uk/MIMO](http://wandsworth.gov.uk/MIMO)

### Enquire about your housing options

[wandsworth.gov.uk/housingoptions](http://wandsworth.gov.uk/housingoptions)

## Pay it online

It's now easier to pay online at [wandsworth.gov.uk/payments](http://wandsworth.gov.uk/payments)

### Pay your council tax

[wandsworth.gov.uk/paycounciltax](http://wandsworth.gov.uk/paycounciltax)

### Pay a parking fine

[wandsworth.gov.uk/parking/payment](http://wandsworth.gov.uk/parking/payment)

### Pay your rent

[wandsworth.gov.uk/rents](http://wandsworth.gov.uk/rents)

### Pay for a marriage or civil partnership ceremony

[wandsworth.gov.uk/ceremonypayment](http://wandsworth.gov.uk/ceremonypayment)

### Pay your business rates

[wandsworth.gov.uk/paybusinessrates](http://wandsworth.gov.uk/paybusinessrates)

### Pay a waste or littering penalty

[wandsworth.gov.uk/waste-enforcement](http://wandsworth.gov.uk/waste-enforcement)

## Talk to us online

### weekly e-newsletter

[wandsworth.gov.uk/enews](http://wandsworth.gov.uk/enews)



[facebook.com/wandsworth.council](https://facebook.com/wandsworth.council)



[twitter.com/wandbc](https://twitter.com/wandbc)

## My Account

Create an account and you will only have to sign in once to access the main council services.

[wandsworth.gov.uk/myaccount](http://wandsworth.gov.uk/myaccount)

## Report It app



**Wandsworth Report It** makes it easier for anyone to report problems like flytipping, graffiti and other environmental issues. Search for the Wandsworth Report It app on the Apple, Android or Windows app store.

## Other contacts at the council

### Adult Social Services

(020) 8871 7707

### Benefits Service

(020) 8871 8080

### Births, Deaths, Marriages and Voting Hotline

(020) 8871 6120

### Council Tax

(020) 8871 8081

### Early Years and Childcare

(020) 8871 6348

### Environmental Services Hotline

- including noise, pest control, private housing and licensing  
(020) 8871 6127

### Family Information Service

(020) 8871 7899

### Housing Management and Repairs

Call your area team or management organisation

### Parking and Streets Hotline - including concessionary travel and highway licensing

(020) 8871 8871

### Planning and Building Control

(020) 8871 7620

### Rent Collection Service

(020) 8871 8987

### Rubbish, Recycling and Litter

(020) 8871 8558

### Schools and Admissions

(020) 8871 7316

# GOOCH HOUSE

## Ponton Road



## New homes available for Intermediate Market Rent

**Gooch House is a collection of 32 brand new 1 & 2 bedroom New York-style apartments in Nine Elms, within easy reach of Vauxhall Station and Battersea Park.**

Residents will enjoy a high-specification home with access to private Podium Gardens and a fabulous landscaped roof terrace in London's newest aspirational neighbourhood.

Intermediate Market Rent (IMR) allows you to rent a property at roughly 80% of the open market rate, and is open to anyone living or working in the area with a household income of under £90,000 a year.

These apartments are exclusively available to rent to those living or working in the London Borough of Wandsworth.

Register your interest in Gooch House through the council's Home Ownership Team.

**Search 'Wandsworth home ownership application form'**

**For further information or guidance:**  
**Call:** 020 8871 6016

**Email:** [housesales@wandsworth.gov.uk](mailto:housesales@wandsworth.gov.uk)

**[www.wandsworth.gov.uk/homeownership](http://www.wandsworth.gov.uk/homeownership)**