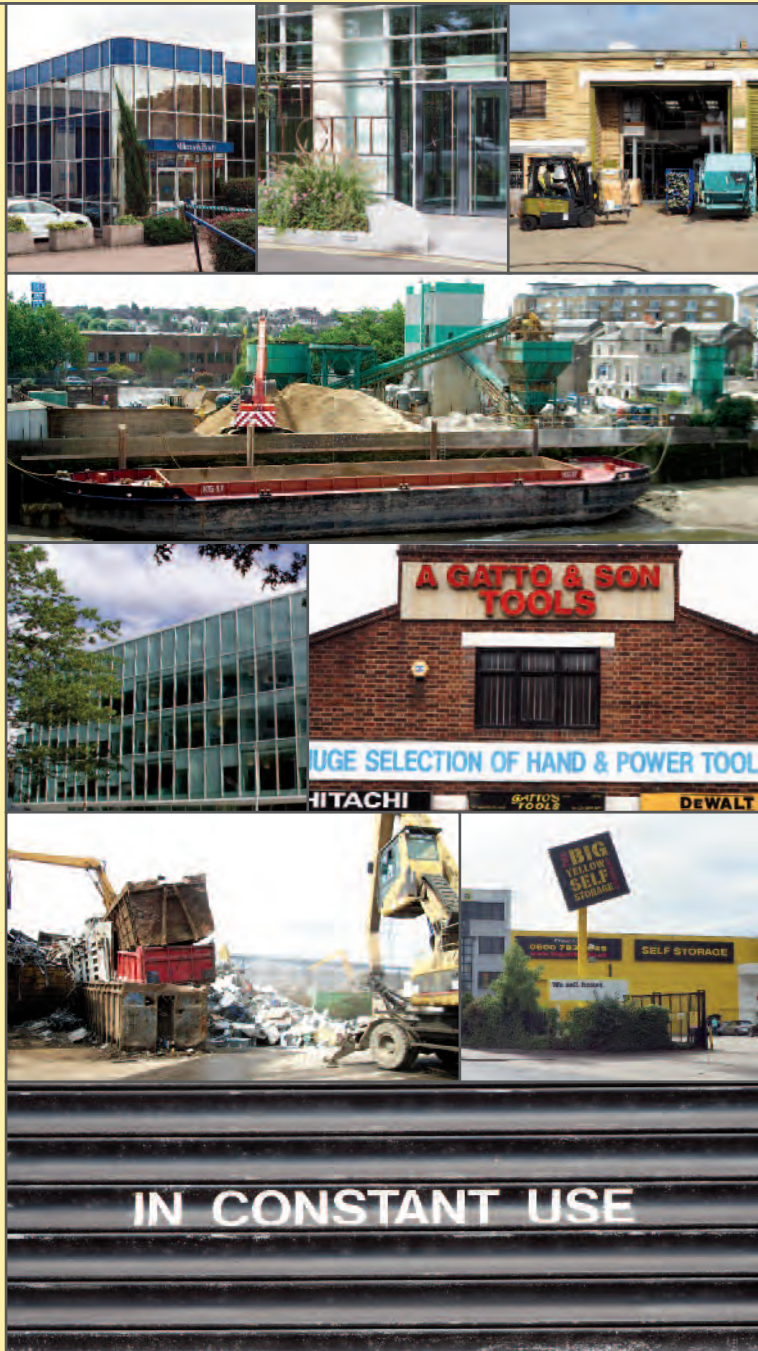


Wandsworth Local Plan



Policies Map Changes Document

Employment and Industry Review

Proposed submission version March 2017

Local Plan - Policies Map Changes Document

1 Introduction	3
2 Map changes	4
2.1 New site allocations	4
2.2 Site allocation amendments	10
2.3 Deleted site allocations	13
2.4 Economic Use Intensification Areas	14
2.5 Employment Protection Areas	18
2.6 Deleted MUFIEAs	35
2.7 Amended and deleted LSIAs	38
2.8 Amended SIL Industrial Business Park (IBP)	40

Policies map changes

Map 1 (Policies map ref 42A) Frogmore Depot	4
Map 2 (Policies map ref 42B) Panorama Antennas	5
Map 3 (Policies map ref 42C) Ferrier Street	6
Map 4 (Policies map ref 42D) 92 Putney Bridge Road (HSS Hire)	7
Map 5 (Policies map ref 35A) Chelsea Cars and KwikFit, Armoury Way	8
Map 6 (Policies map ref 99F) Riverside Business Centre and former Bingo Hall, Bendon Valley	9
Map 7 (Policies map ref 40) Causeway Island including land to the east	10
Map 8 (Policies map ref 41) Hunts Trucks, adjoining sites including gas holder, Armoury Way	11
Map 9 (Policies map ref 42) Keltbray Site, Wentworth House and adjacent land at Dormay Street	12

Map 10 (Policies map ref 44) 3-4 Osiers Road	13
Map 11 (Policies map ref 137) Ferrier Street Economic Use Intensification Area	14
Map 12 (Policies map ref 138) Central Wandsworth Economic Use Intensification Area	15
Map 13 (Policies map ref 139) 53-61 Armoury Way Economic Use Intensification Area	16
Map 14 (Policies map ref 140) Bendon Valley Economic Use Intensification Area	17
Map 15 (Policies map ref 141) 57 and 88-92 Putney Bridge Road, 2 Adelaide Road - Employment Protection Area	18
Map 16 (Policies map ref 142) 70 Upper Richmond Road, 5 Manfred Road - Employment Protection Area	19
Map 17 (Policies map ref 143) 116-118 Putney Bridge Road - Employment Protection Area	20
Map 18 (Policies map ref 144) 124 Latchmere Road, 187-207 Lavender Hill - Employment Protection Area	21
Map 19 (Policies map ref 145) Battersea Business Centre, 99-109 Lavender Hill - Employment Protection Area	22
Map 20 (Policies map ref 146) College Mews and 190-194 St Anns Hill - Employment Protection Area	23
Map 21 (Policies map ref 147) Eagle House, Armoury Way - Employment Protection Area	24
Map 22 (Policies map ref 148) Hillgate Place, Balham Hill - Employment Protection Area	25
Map 23 (Policies map ref 149) Irene House, 218 Balham High Road and 25 Boundaries Road - Employment Protection Area	26
Map 24 (Policies map ref 150) Jaggard Way - Employment Protection Area	27
Map 25 (Policies map ref 151) Princeton Court - Employment Protection Area	28
Map 26 (Policies map ref 152) Royal Victoria Patriotic Building - Employment Protection Area	29
Map 27 (Policies map ref 153) Smiths Yard - Employment Protection Area	30
Map 28 (Policies map ref 154) Smugglers Way, Jews Row, Battersea Reach - Employment Protection Area	31
Map 29 (Policies map ref 155) The Old Imperial Laundry, 71-73 Warriner Gardens - Employment Protection Area	32
Map 30 (Policies map ref 156) Triangle House, 2 Broomhill Road, Spencer Court - Employment Protection Area	33
Map 31 (Policies map ref 157) Wimbledon Sewing Centre, Balham Cars, Balham High Road - Employment Protection Area	34
Map 32 (Policies map ref 68) Howie Street MUFIEA	35
Map 33 (Policies map ref 69) Chatfield/Mendip Roads and (Policies map ref 70) Gwynne Road MUFIEAs	36
Map 34 (Policies map ref 71) Ram Brewery, (Policies map ref 72) Business Village and (Policies map ref 73) Osiers Road MUFIEAs	37
Map 35 (Policies map ref 66) Lydden Road (formerly Bendon Valley) LSIA	38
Map 36 (Policies map ref 65) Central Wandsworth LSIA	39
Map 37 (Policies map ref 61a) Strategic Industrial Location - Industrial Business Park	40

1 Introduction

The Wandsworth Local Plan Policies Map was adopted in March 2016, accompanying the Core Strategy, Development Management Policies Document (DMPD) and Site Specific Allocations Document (SSAD) which form the adopted Local Plan for Wandsworth.

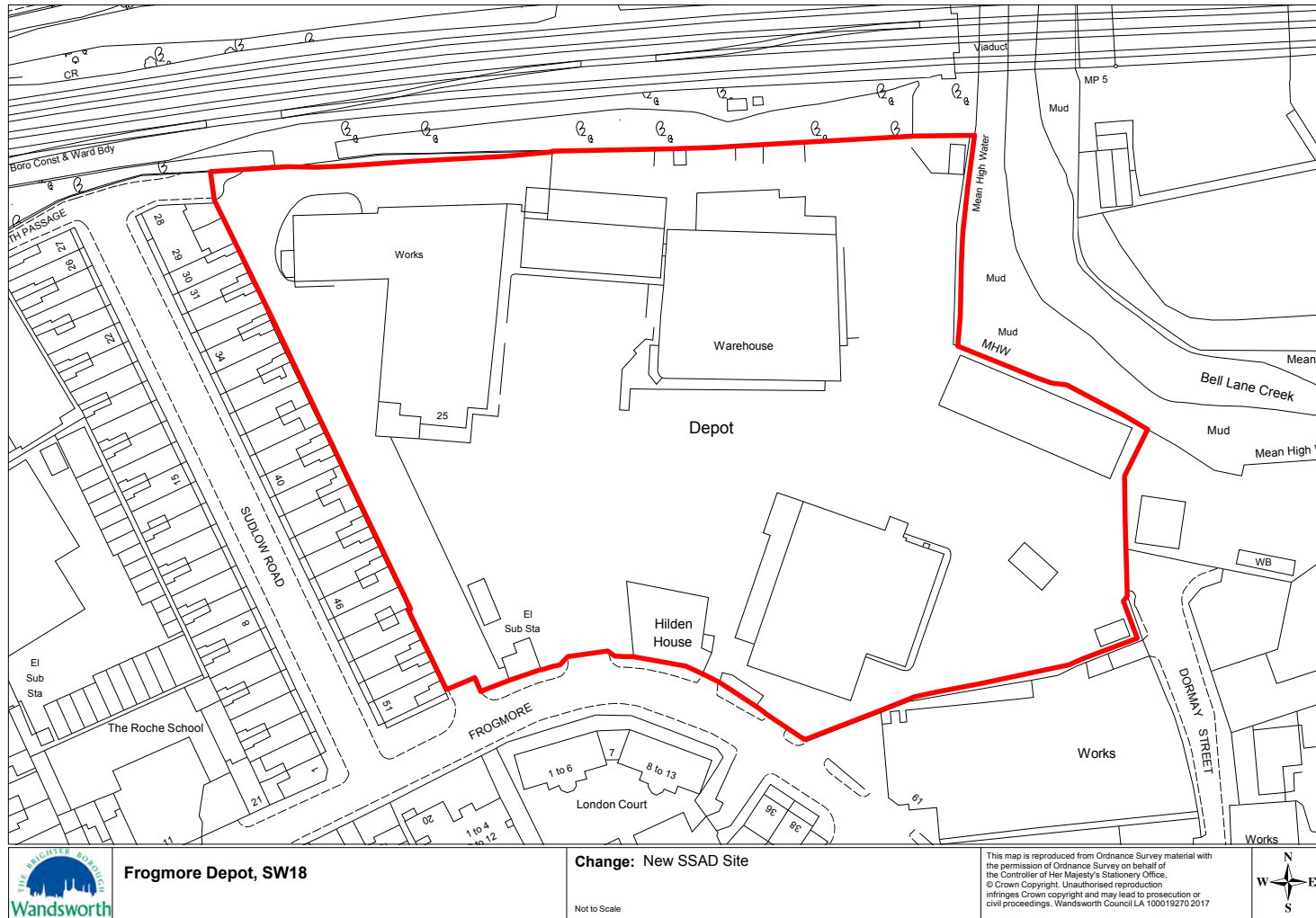
The council are undertaking a partial review of the adopted Local Plan, looking at issues relating to employment and industry. A proposed submission version of the Wandsworth Local Plan Employment and Industry Document (March 2017) has been published, which the council intends to submit for public examination to the Secretary of State. The Employment and Industry Document and details of the partial review, including public consultations, can be found on the council's website at:

- www.wandsworth.gov.uk/employmentlandreview

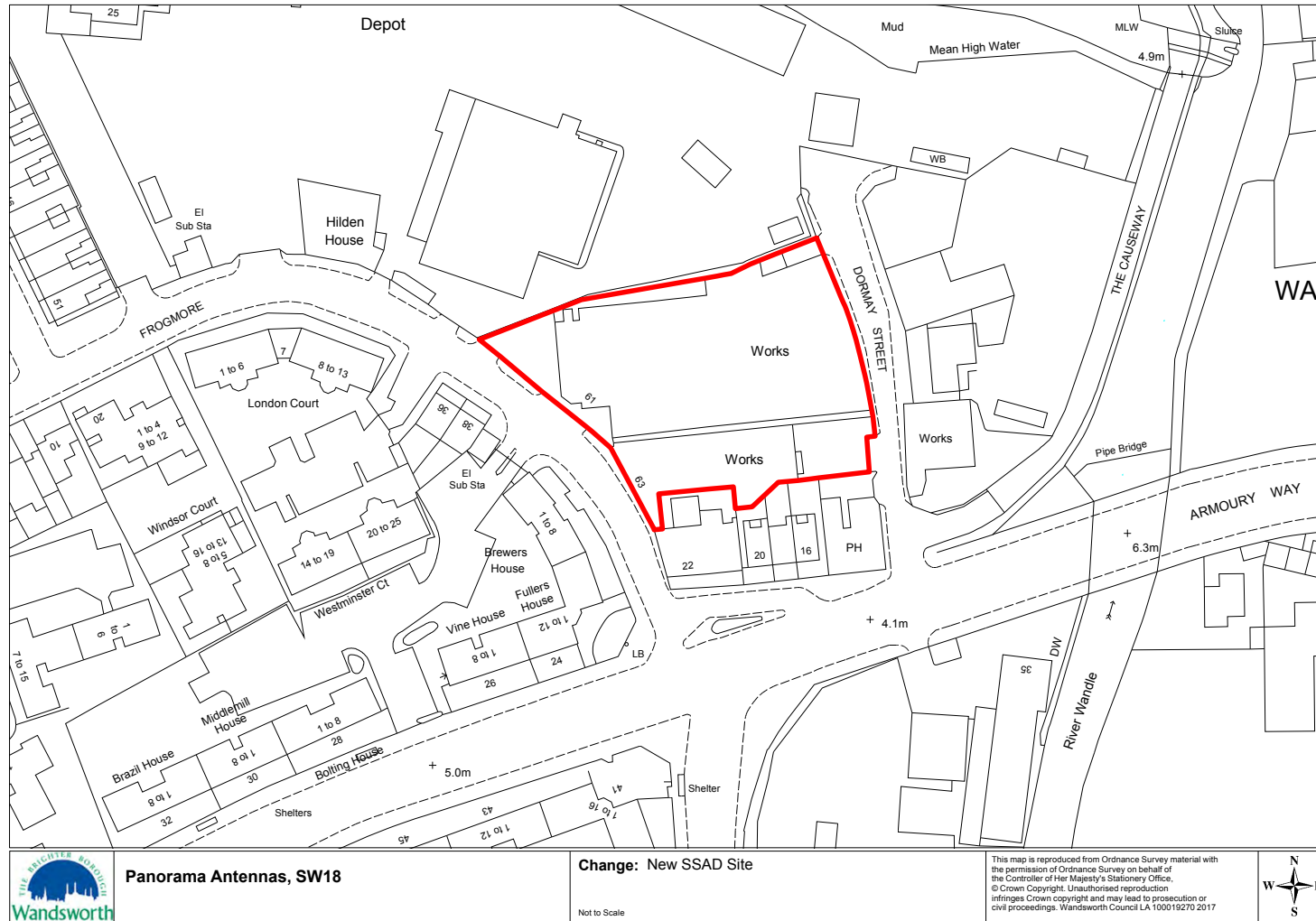
Once the Employment and Industry Document is adopted, following examination, a new version of the policies map will be produced. This document shows the changes that will need to be made to the adopted policies map.

2 Map changes

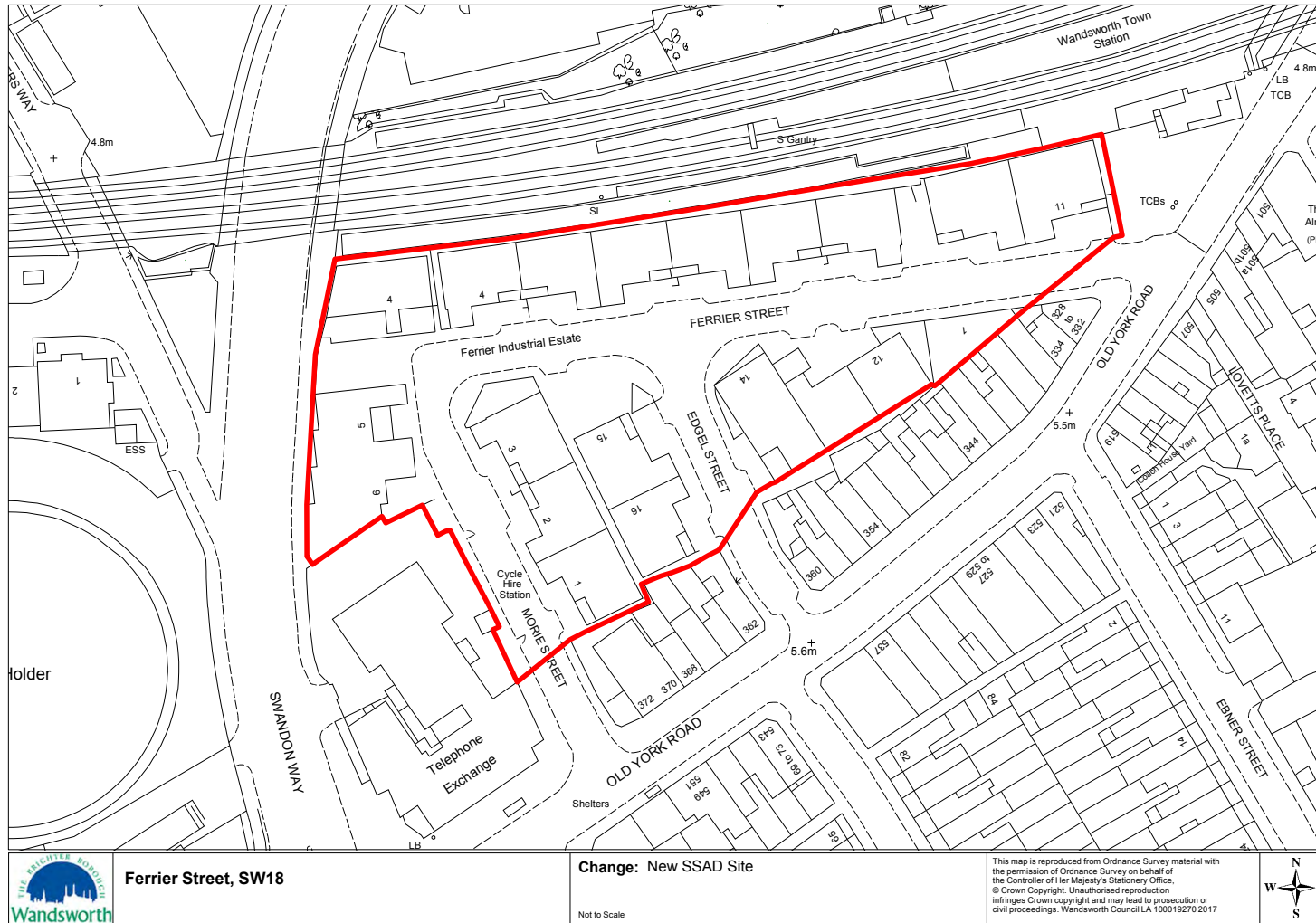
2.1 New site allocations



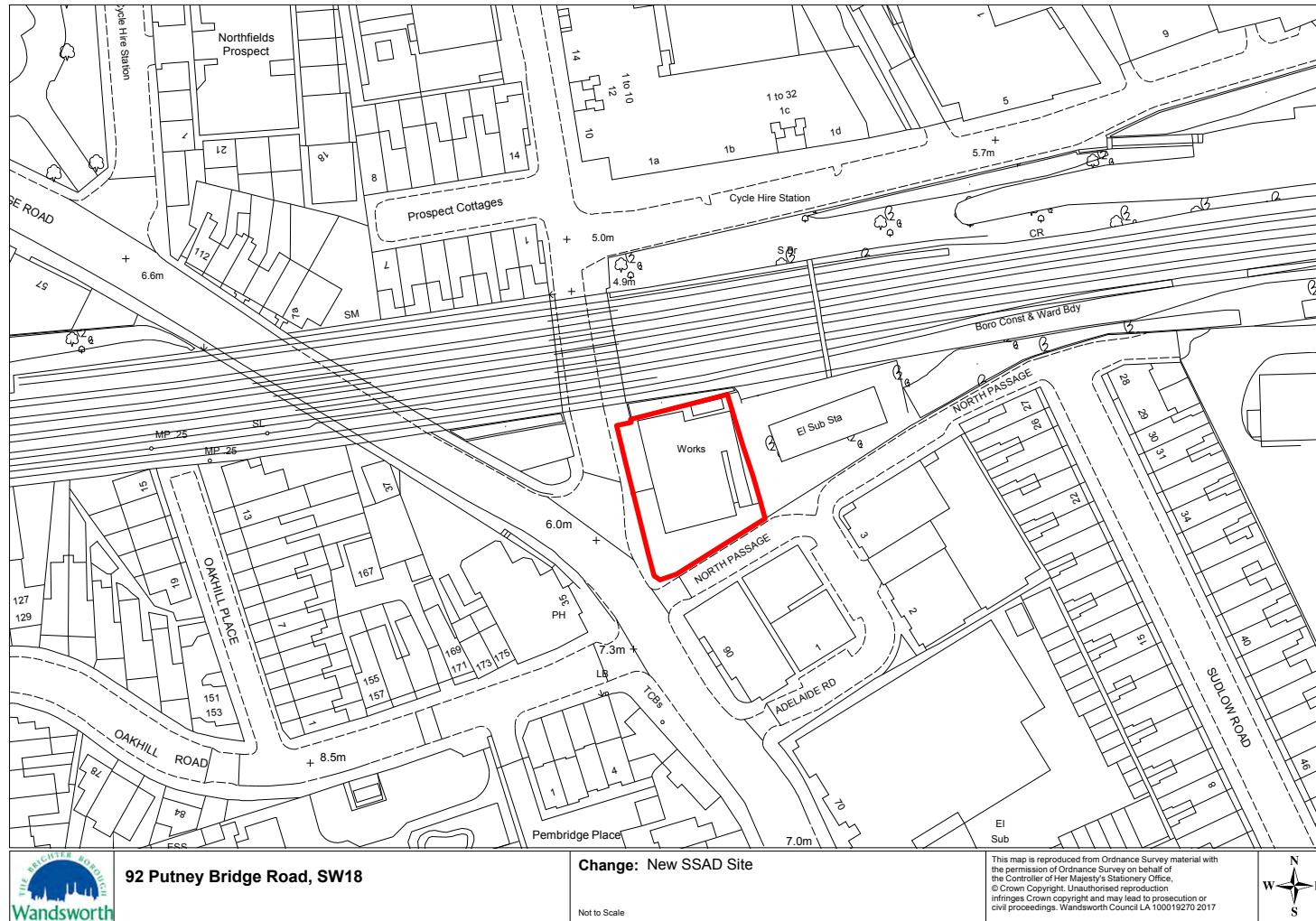
Map 1 (Policies map ref 42A) Frogmore Depot



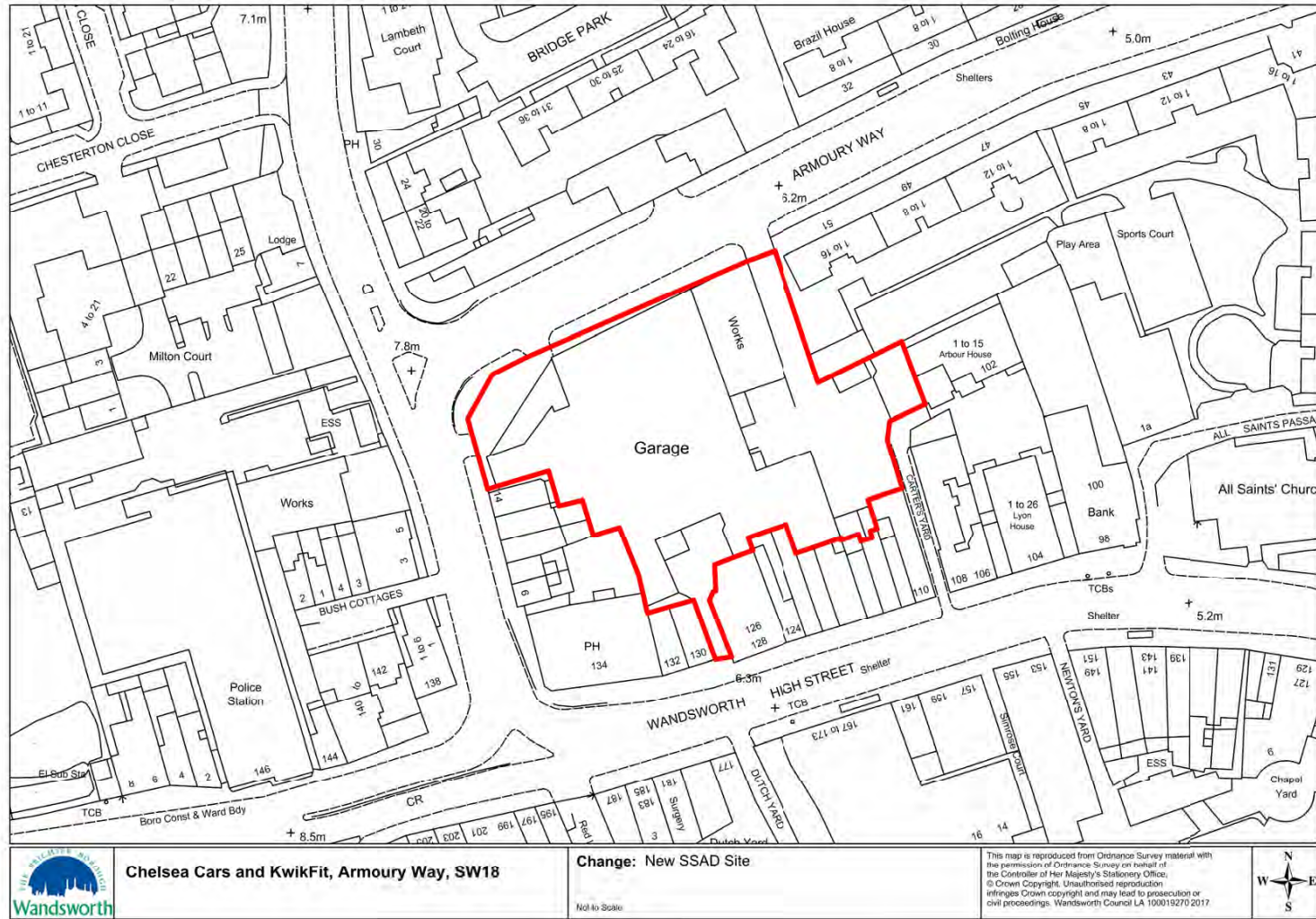
Map 2 (Policies map ref 42B) Panorama Antennas



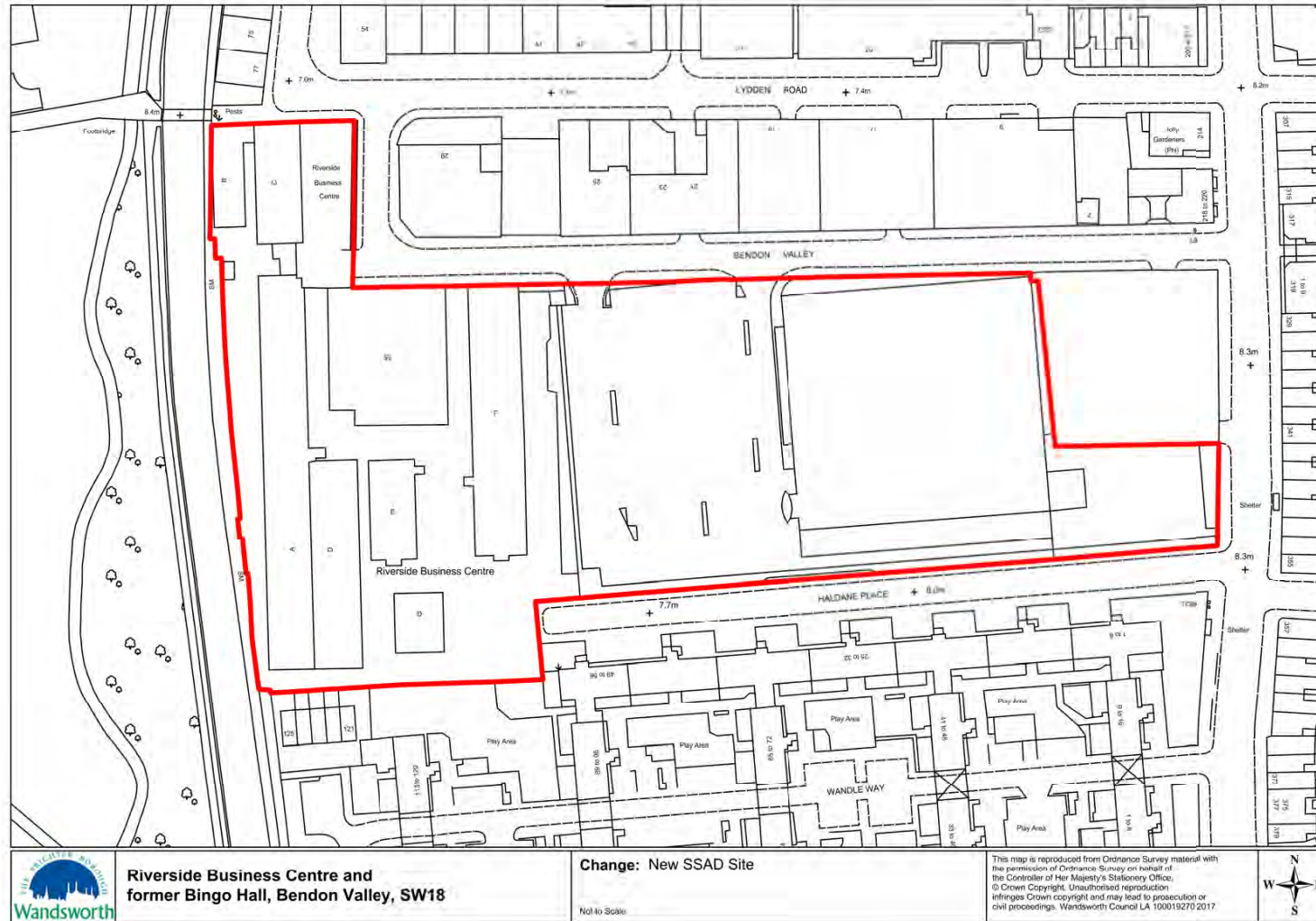
Map 3 (Policies map ref 42C) Ferrier Street



Map 4 (Policies map ref 42D) 92 Putney Bridge Road (HSS Hire)

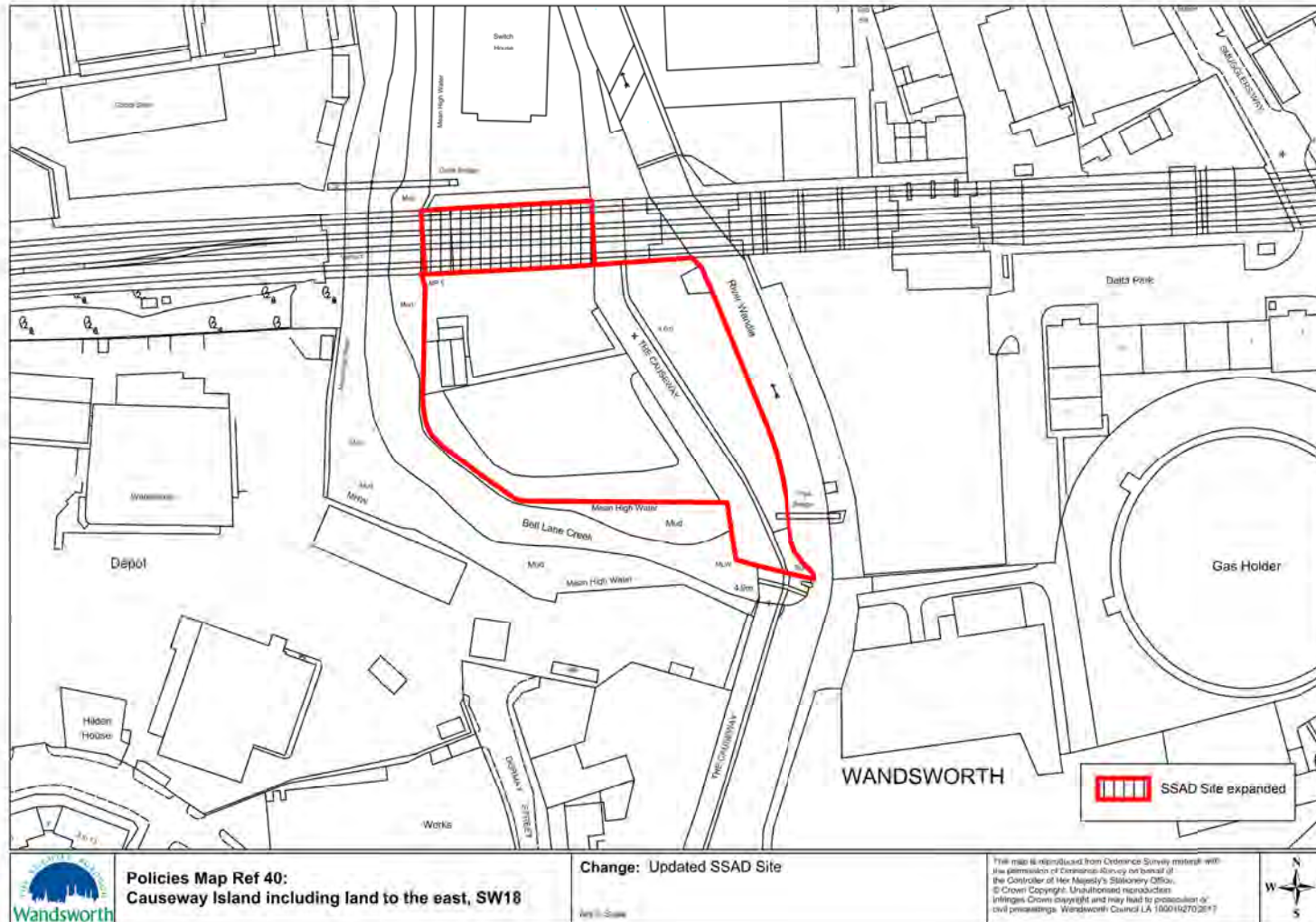


Map 5 (Policies map ref 35A) Chelsea Cars and KwikFit, Armoury Way

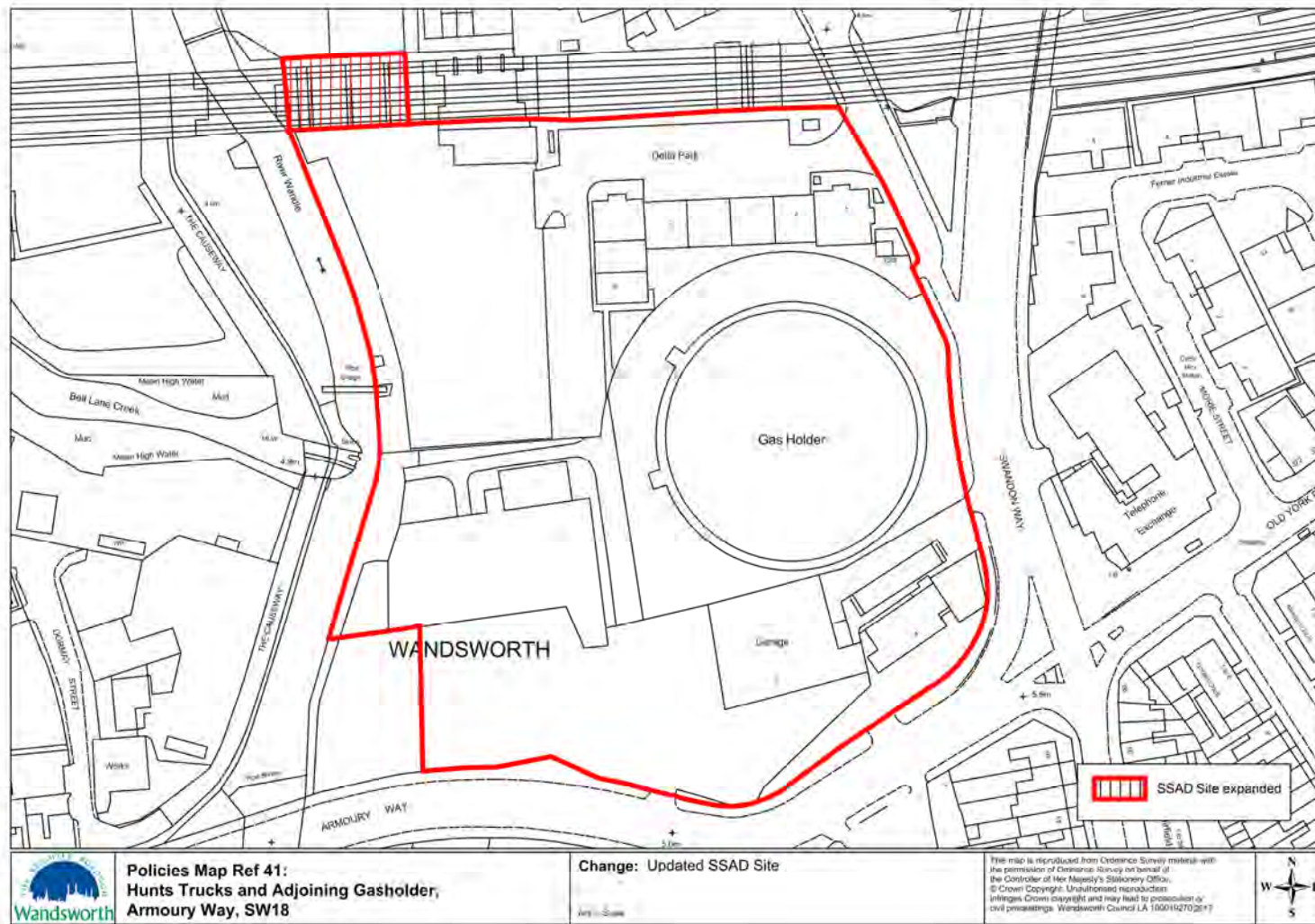


Map 6 (Policies map ref 99F) Riverside Business Centre and former Bingo Hall, Bendon Valley

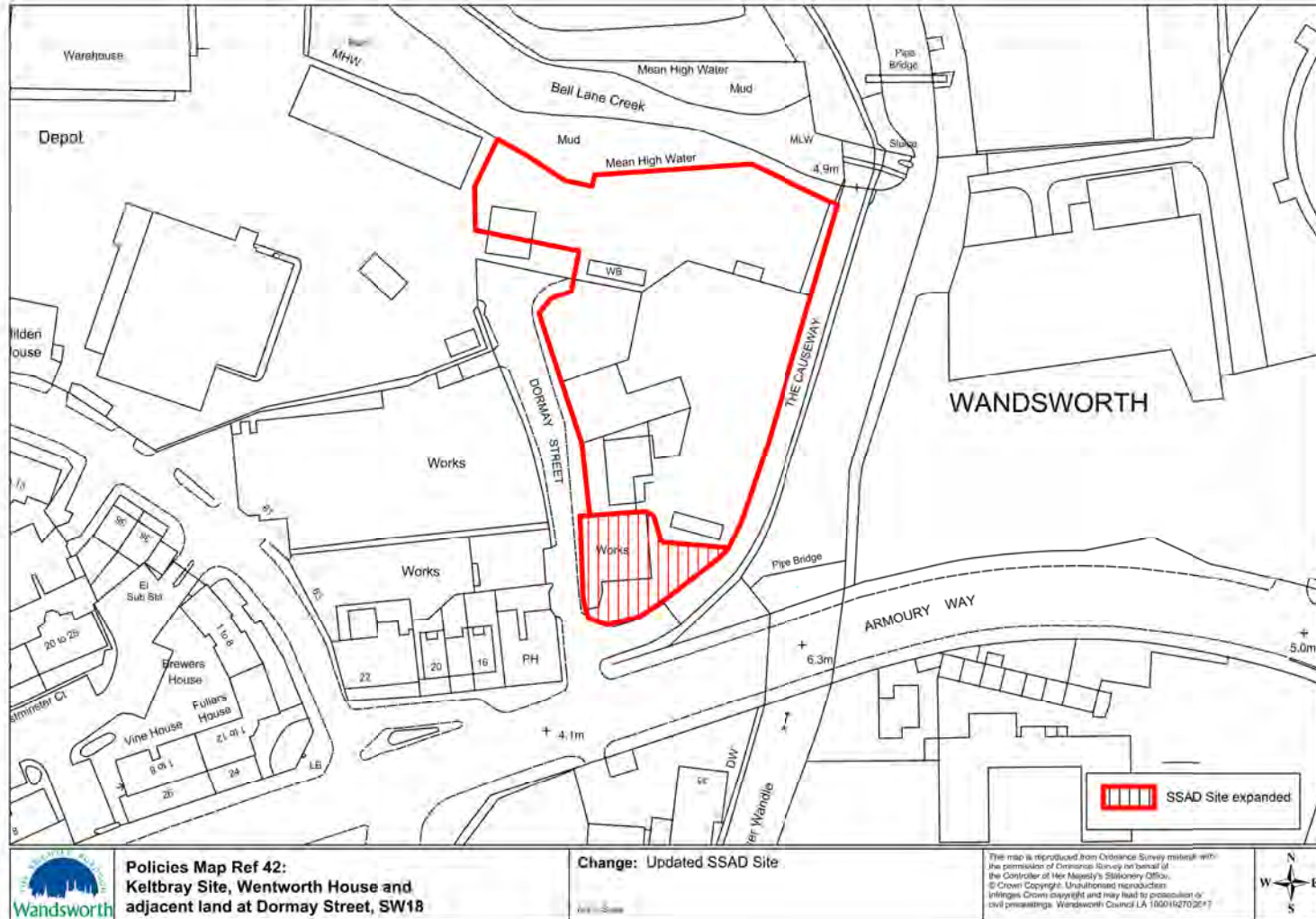
2.2 Site allocation amendments



Map 7 (Policies map ref 40) Causeway Island including land to the east

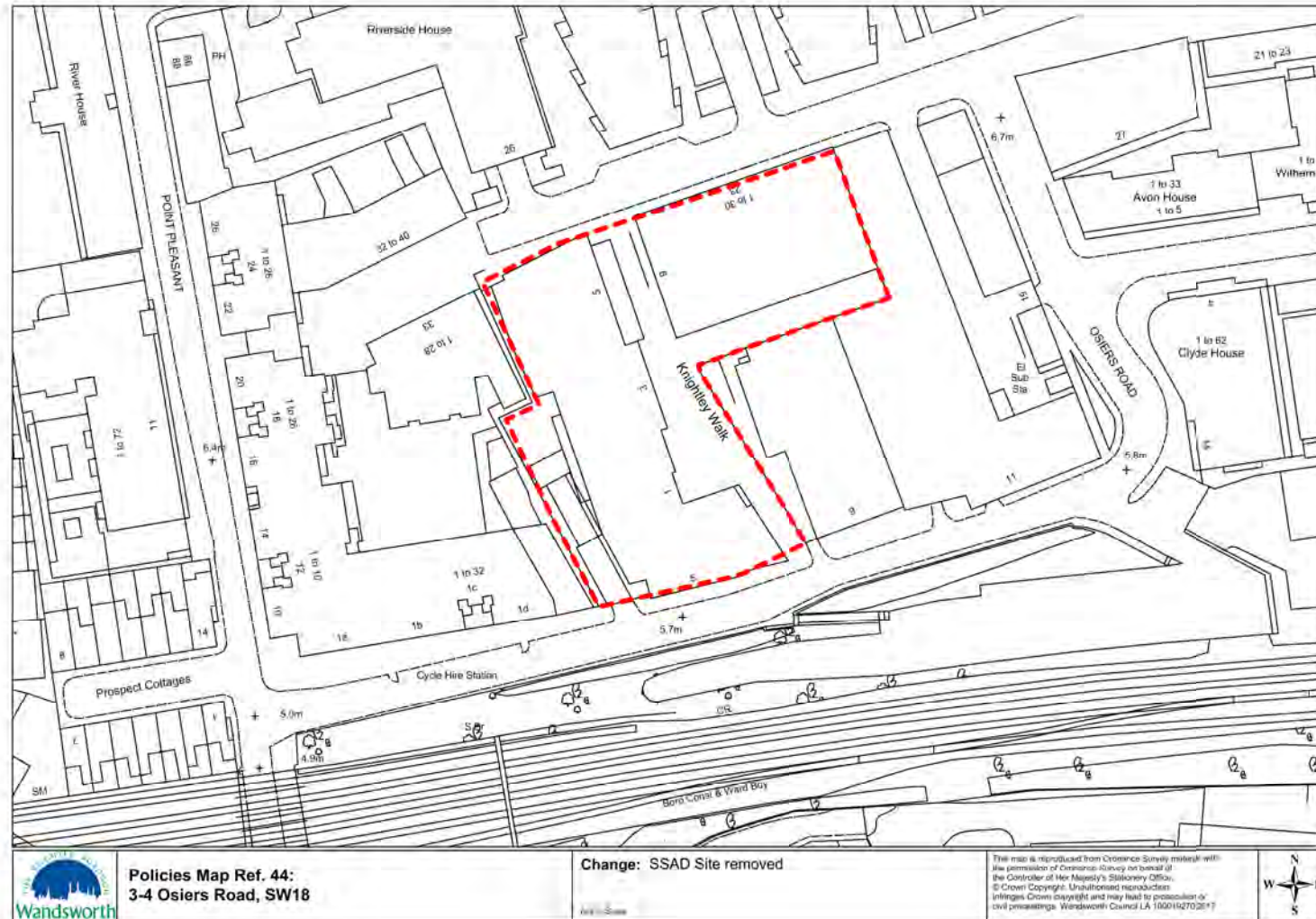


Map 8 (Policies map ref 41) Hunts Trucks, adjoining sites including gas holder, Armoury Way



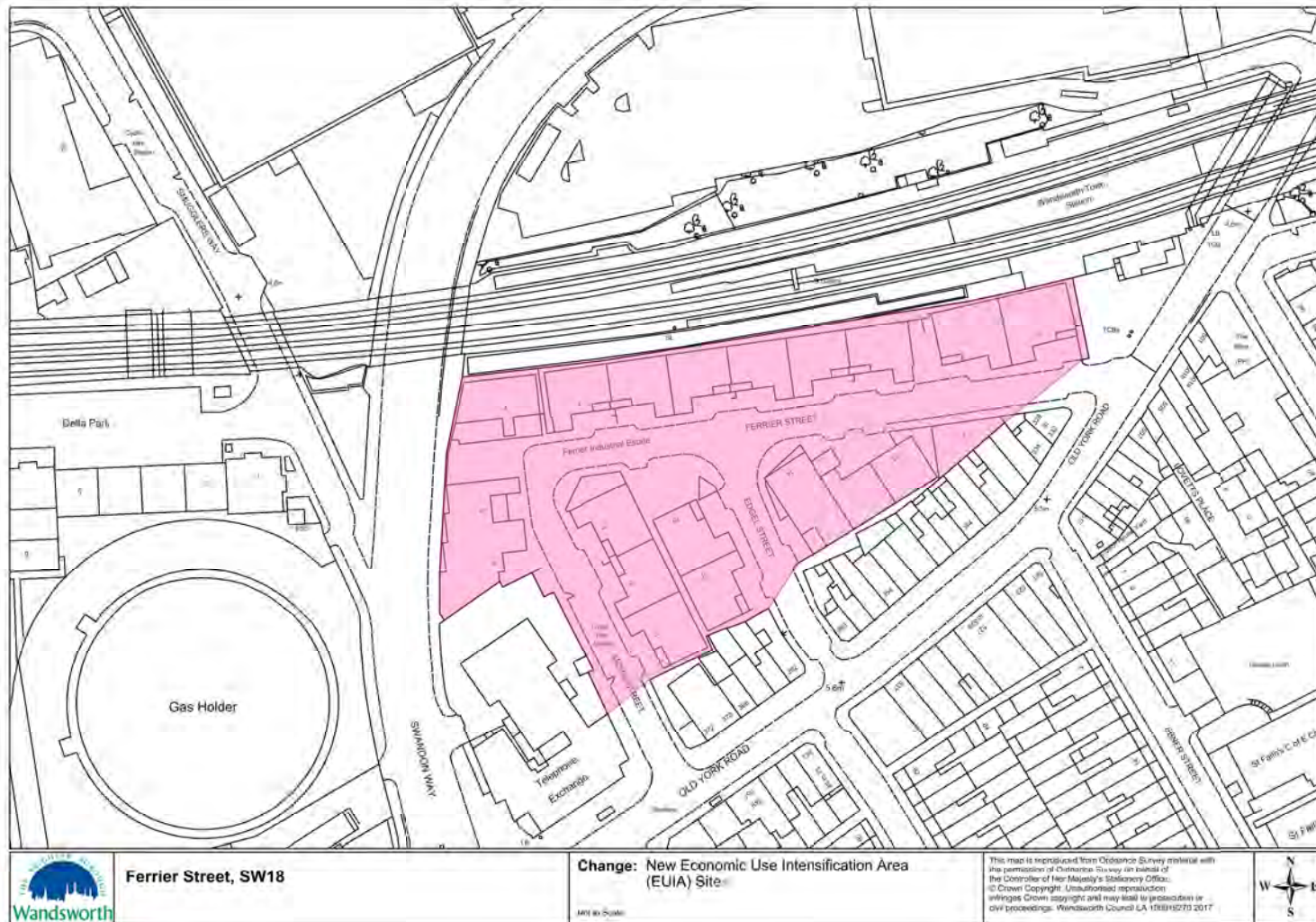
Map 9 (Policies map ref 42) Keltbray Site, Wentworth House and adjacent land at Dormay Street

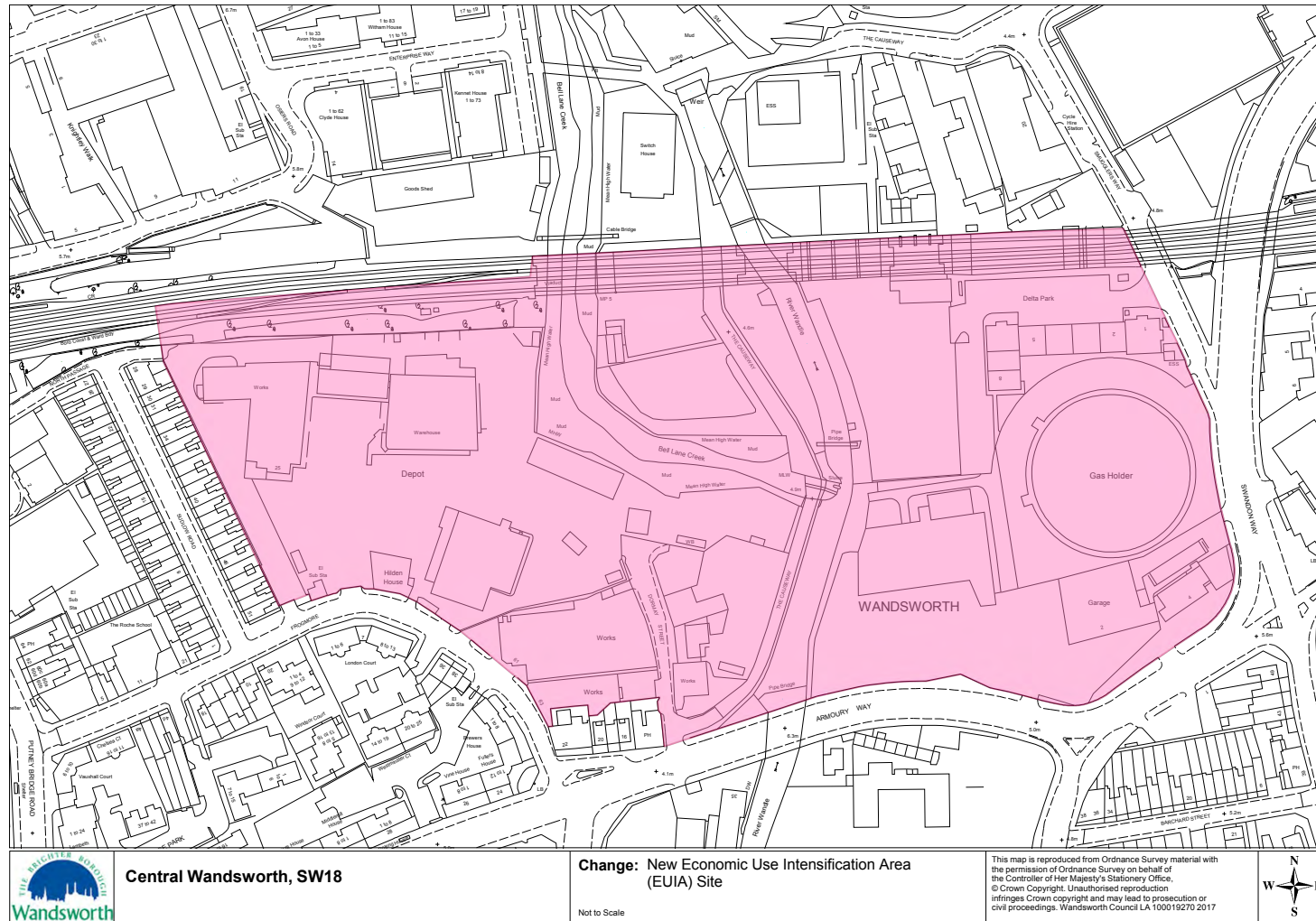
2.3 Deleted site allocations



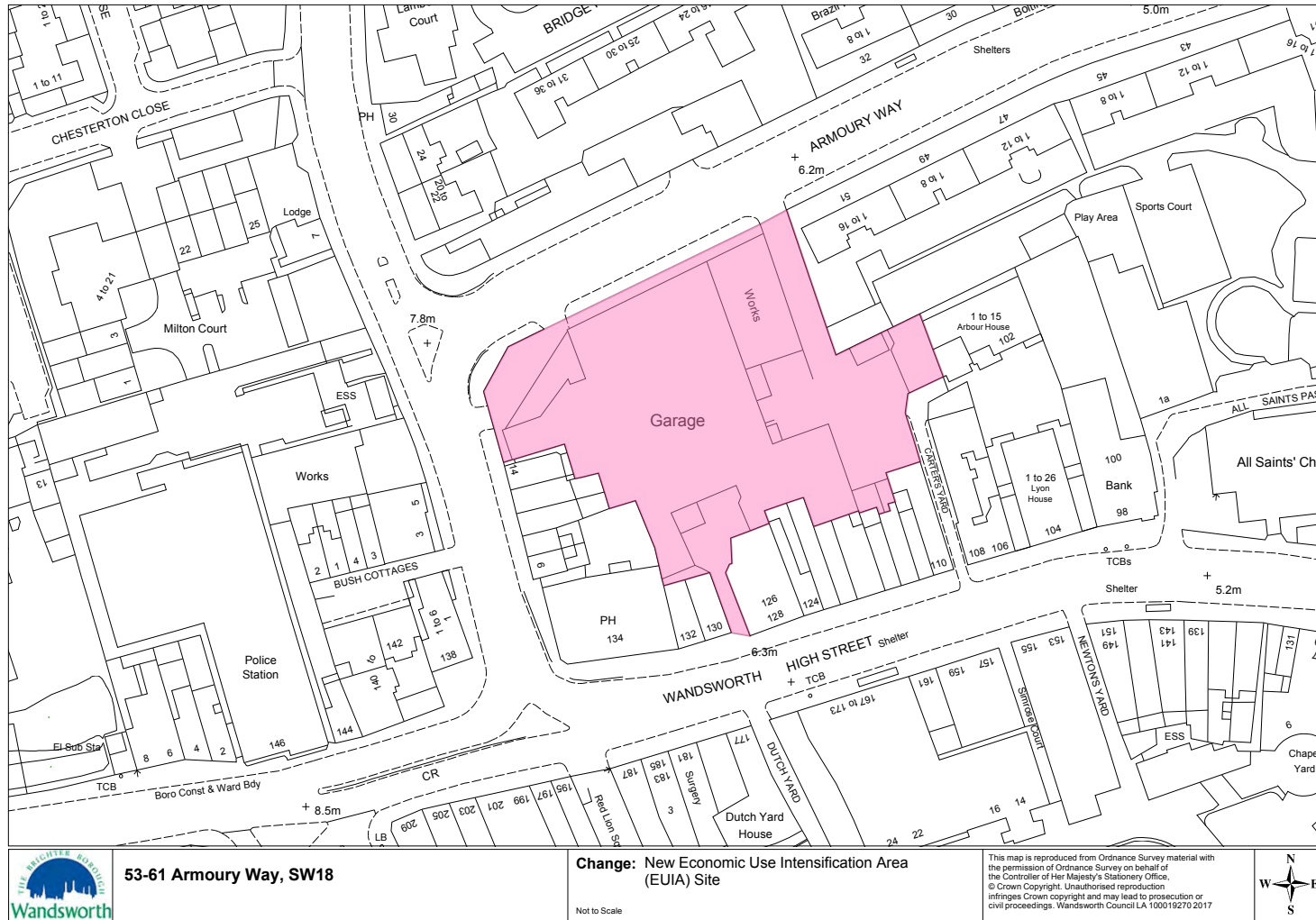
Map 10 (Policies map ref 44) 3-4 Osiers Road

2.4 Economic Use Intensification Areas

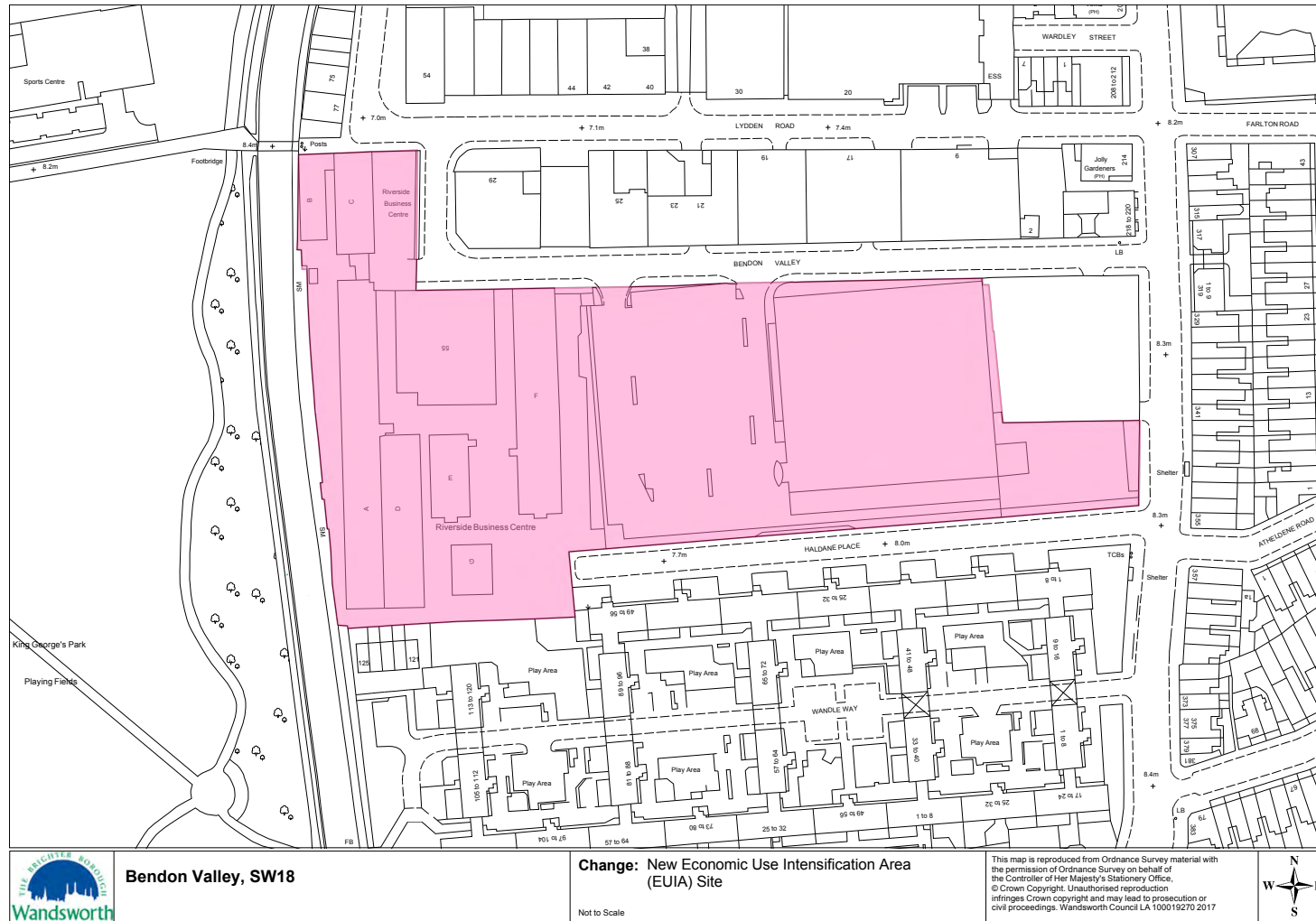




Map 12 (Policies map ref 138) Central Wandsworth Economic Use Intensification Area

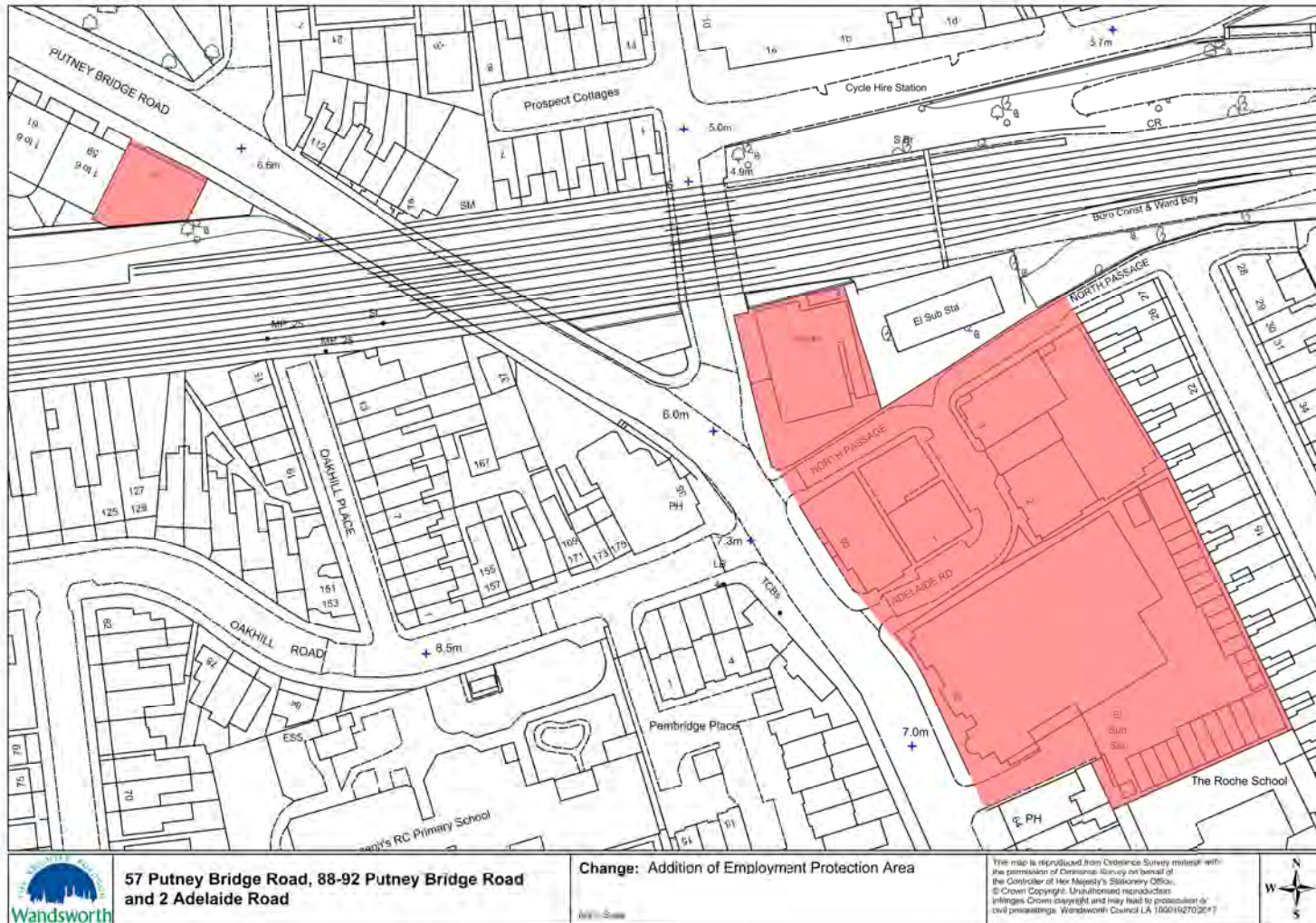


Map 13 (Policies map ref 139) 53-61 Armory Way Economic Use Intensification Area

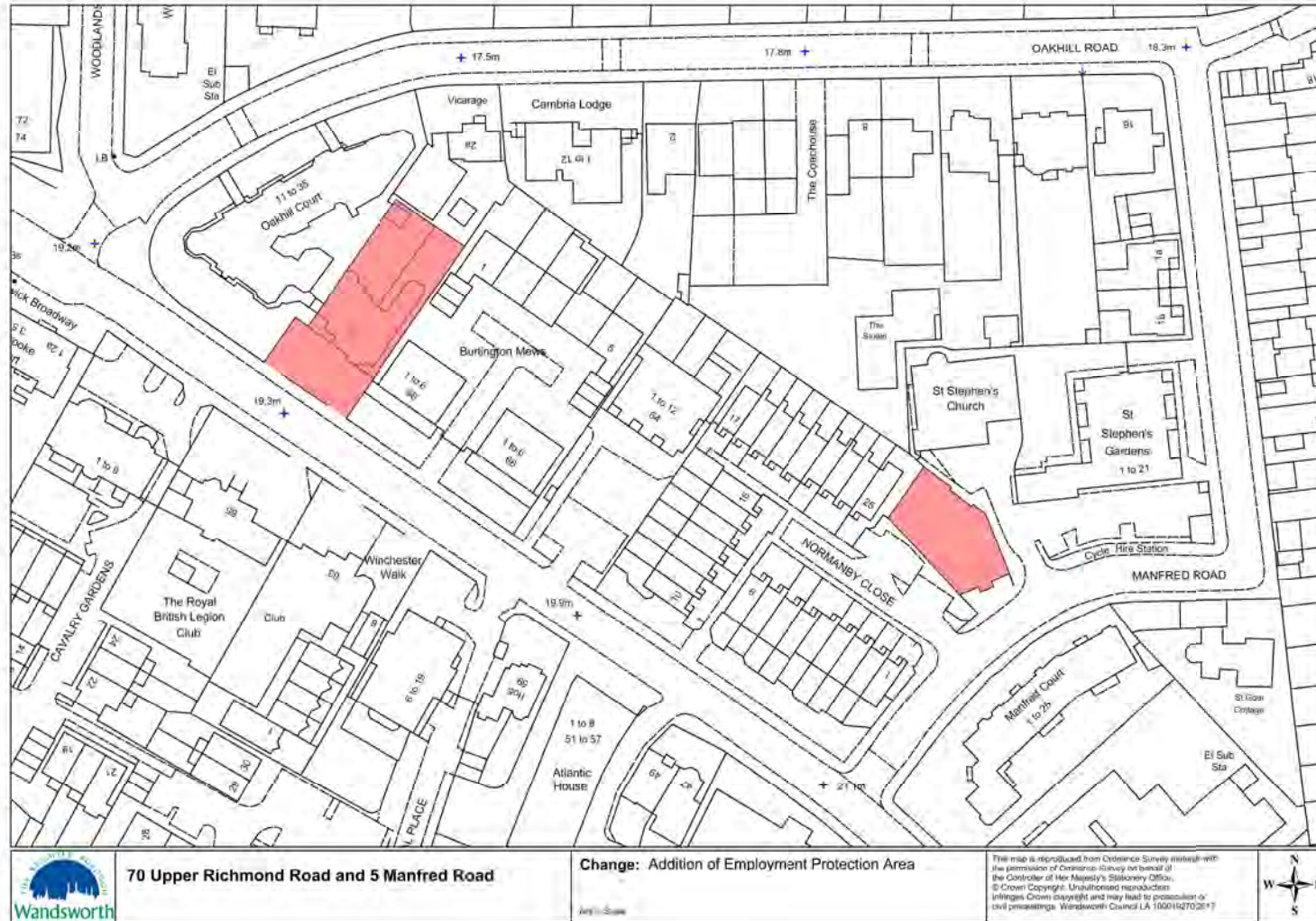


Map 14 (Policies map ref 140) Bendon Valley Economic Use Intensification Area

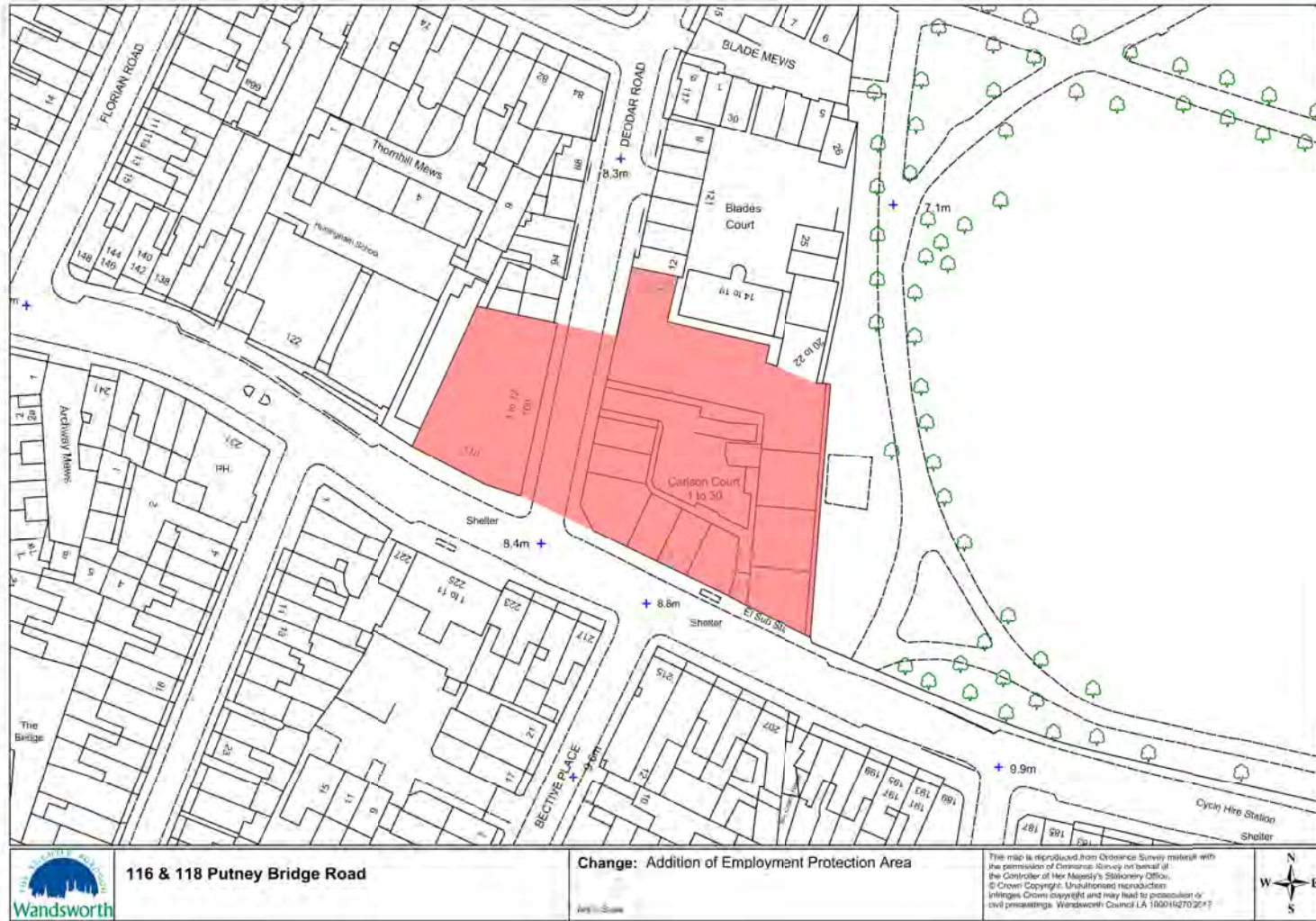
2.5 Employment Protection Areas



Map 15 (Policies map ref 141) 57 and 88-92 Putney Bridge Road, 2 Adelaide Road - Employment Protection Area



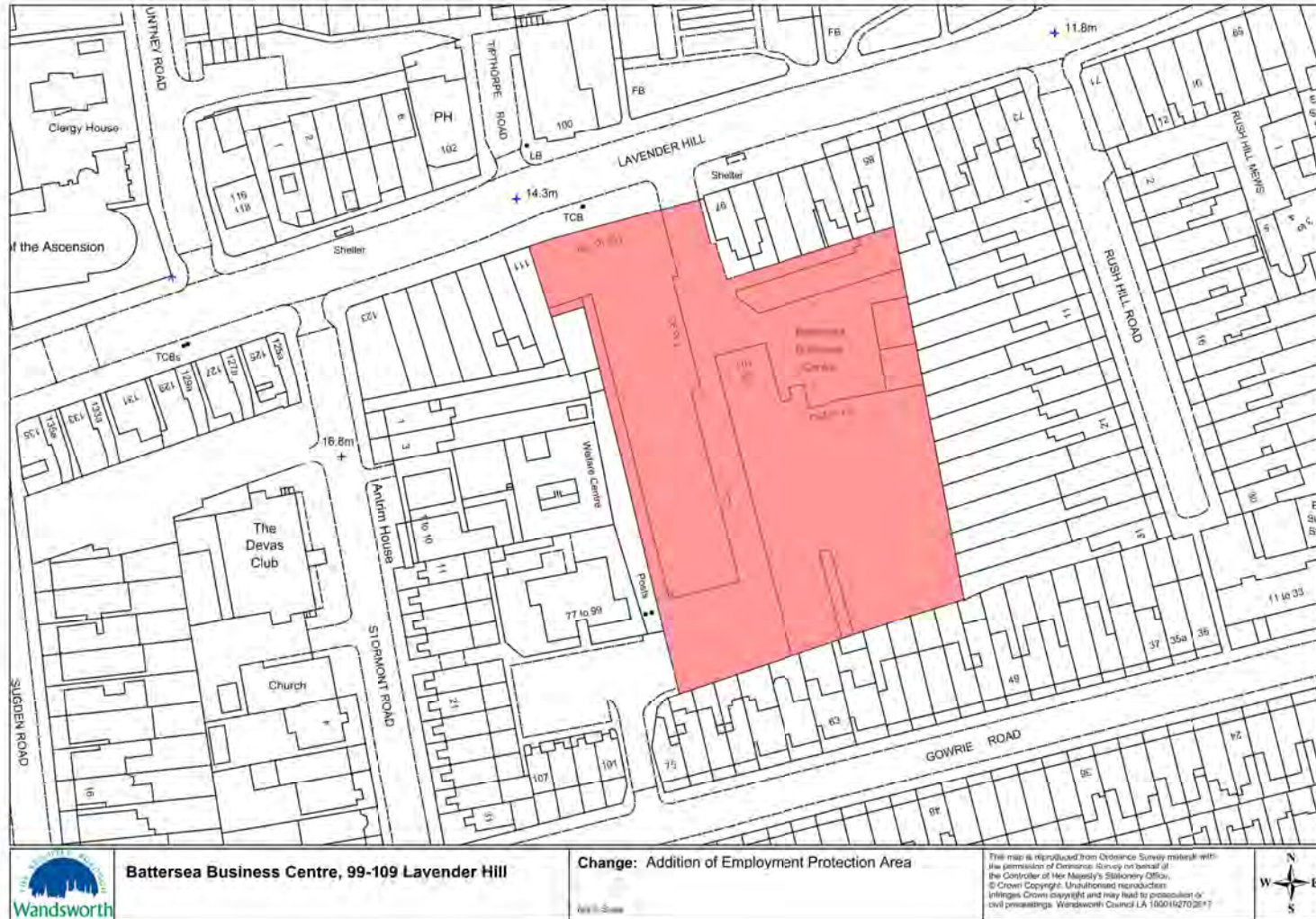
Map 16 (Policies map ref 142) 70 Upper Richmond Road, 5 Manfred Road - Employment Protection Area



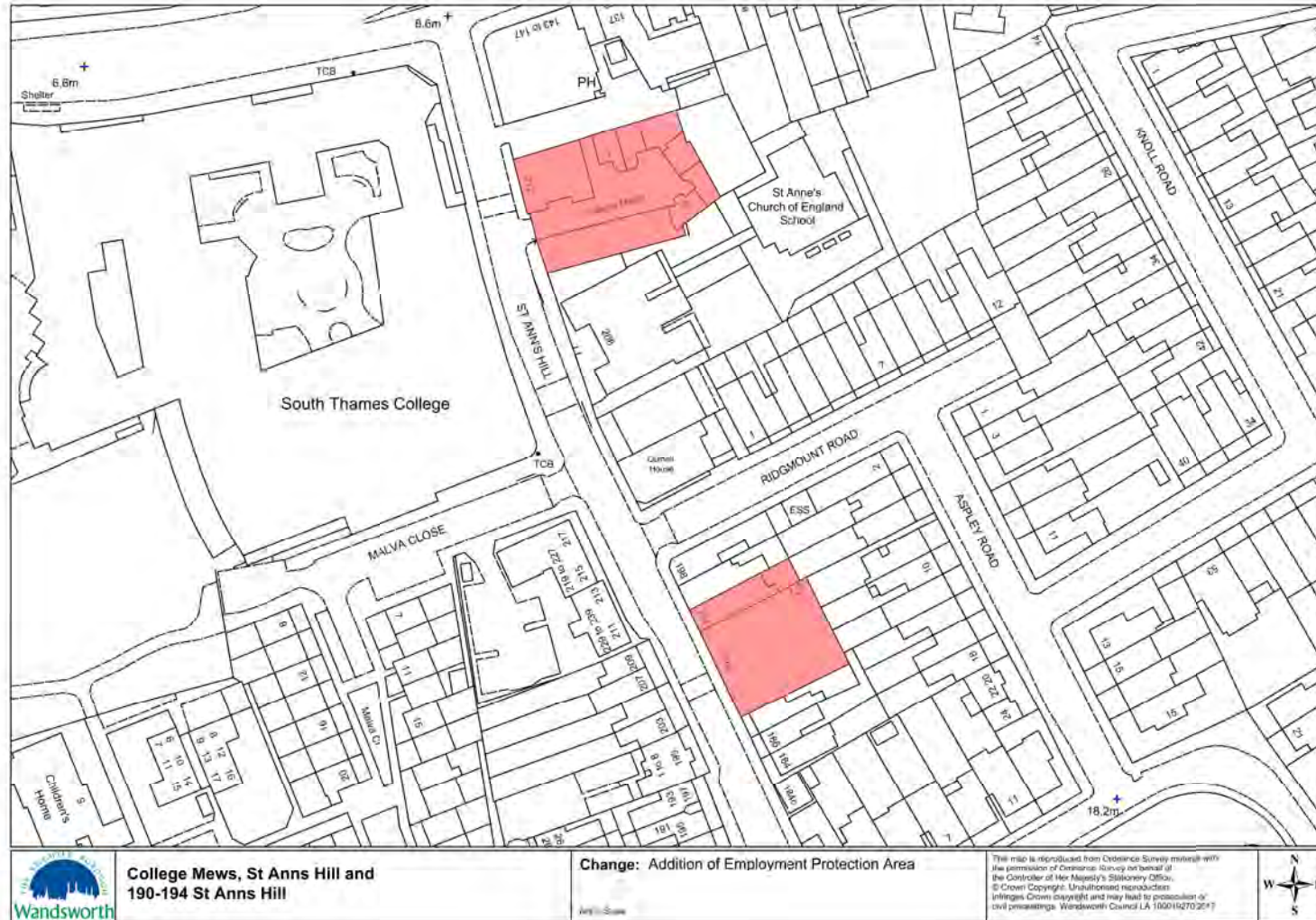
Map 17 (Policies map ref 143) 116-118 Putney Bridge Road - Employment Protection Area



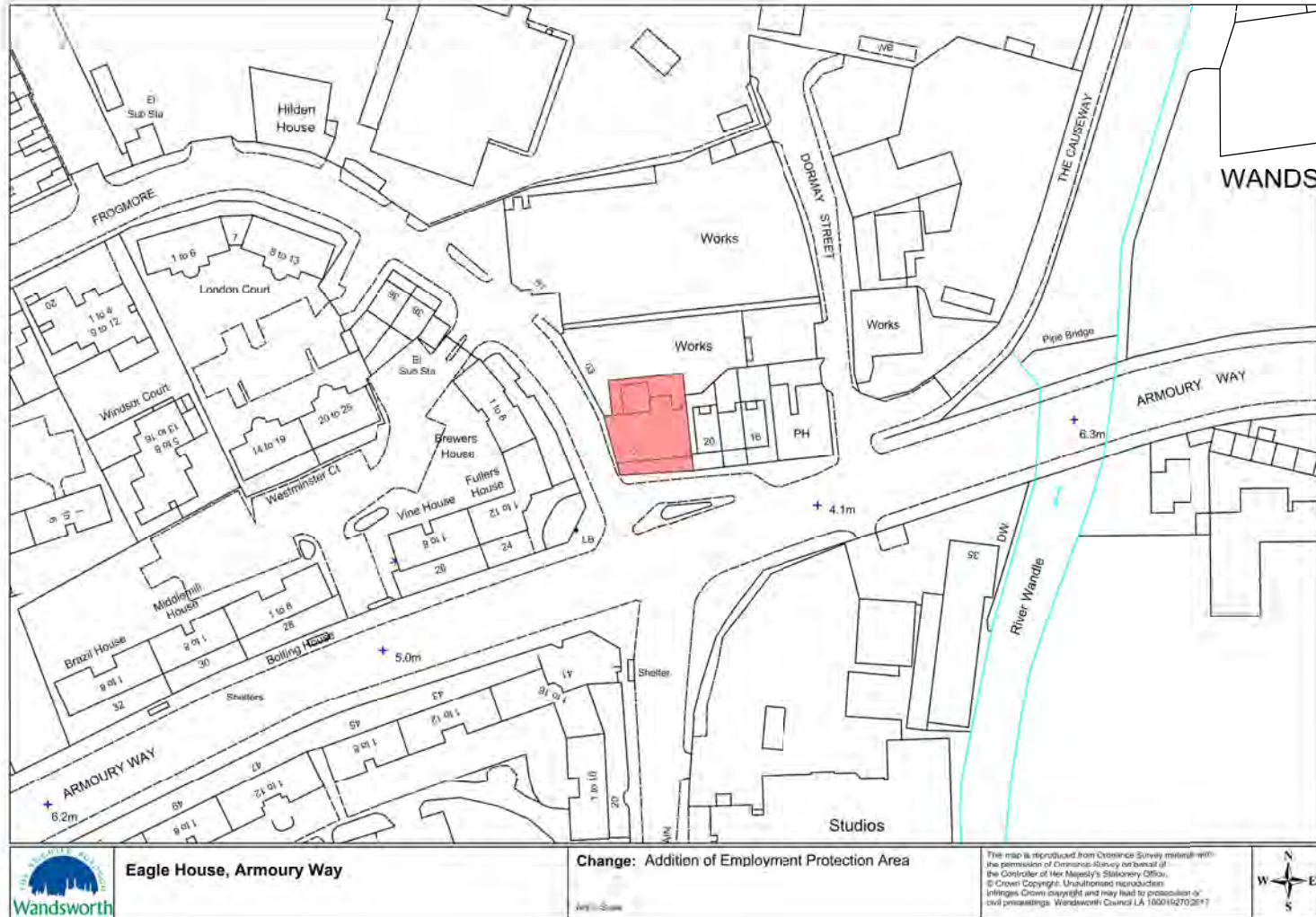
Map 18 (Policies map ref 144) 124 Latchmere Road, 187-207 Lavender Hill - Employment Protection Area



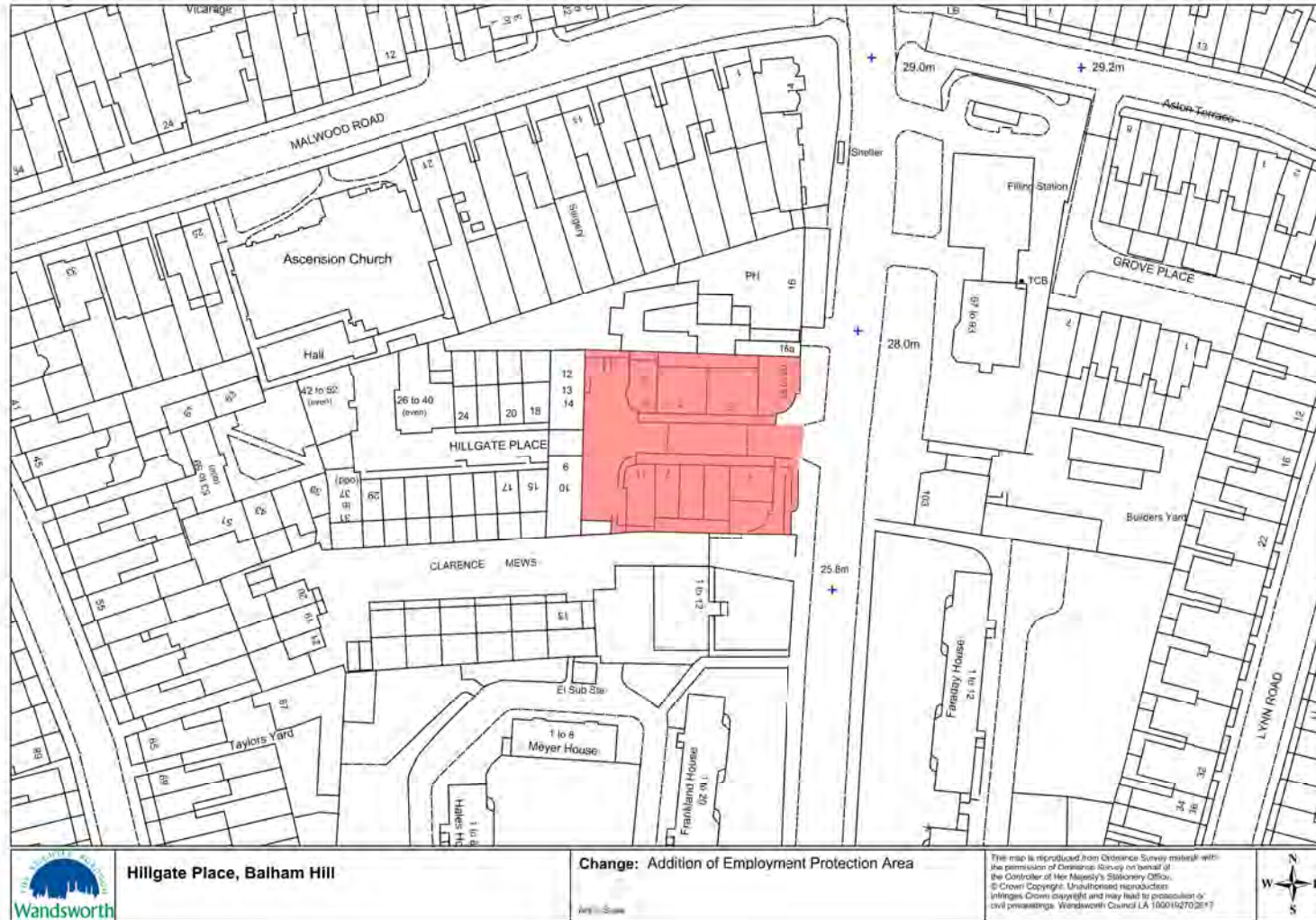
Map 19 (Policies map ref 145) Battersea Business Centre, 99-109 Lavender Hill - Employment Protection Area



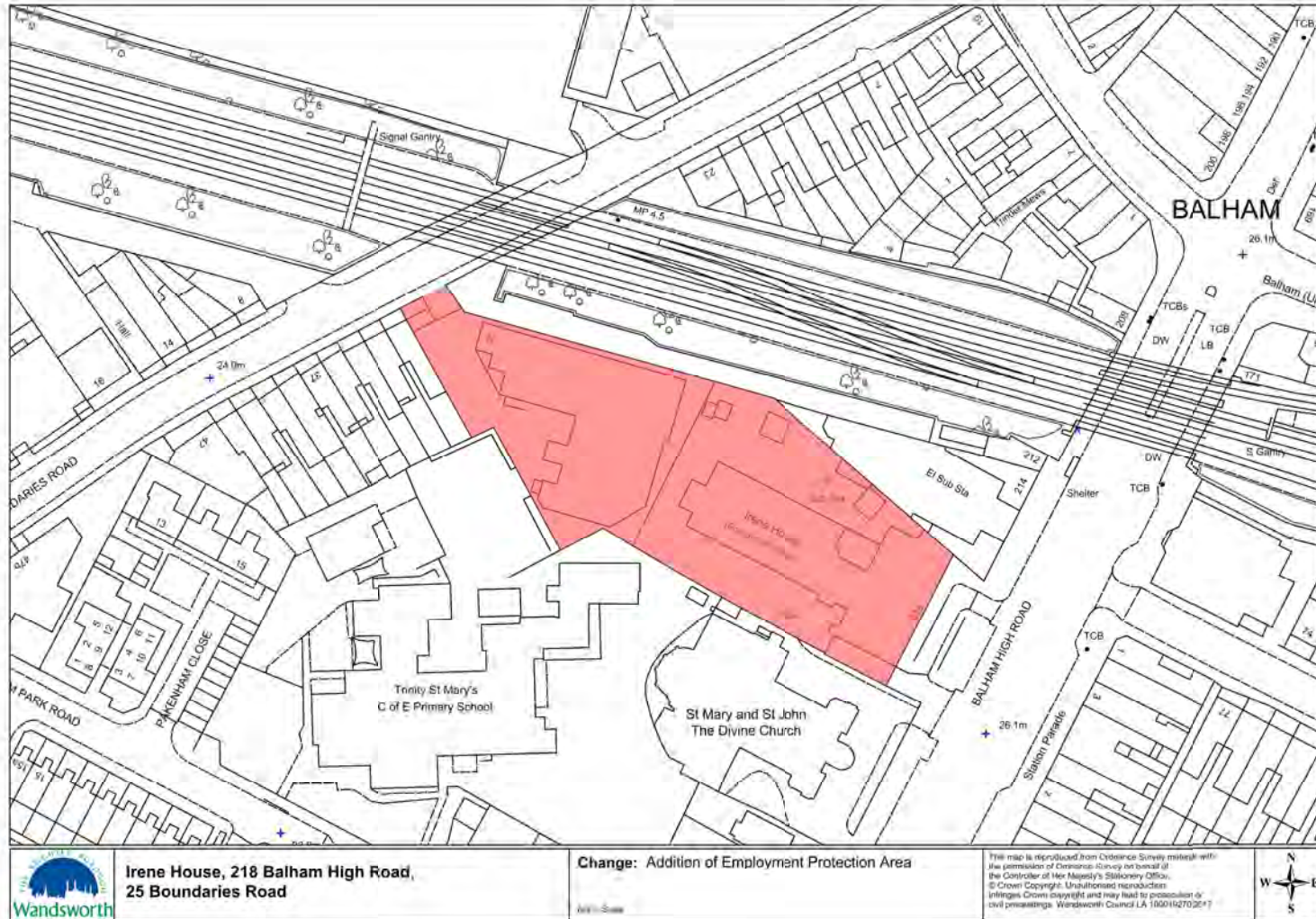
Map 20 (Policies map ref 146) College Mews and 190-194 St Anns Hill - Employment Protection Area



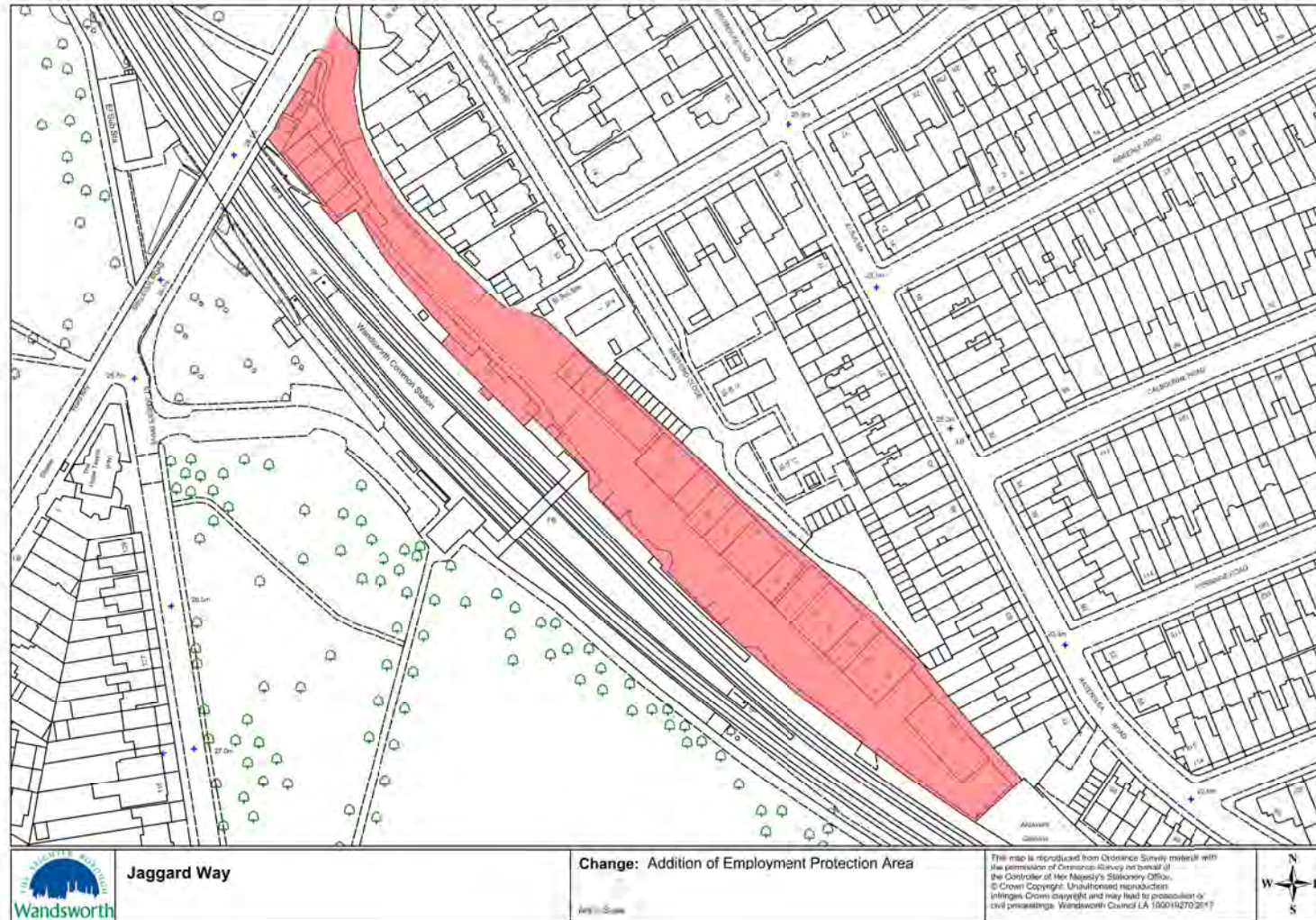
Map 21 (Policies map ref 147) Eagle House, Armory Way - Employment Protection Area



Map 22 (Policies map ref 148) Hillgate Place, Balham Hill - Employment Protection Area



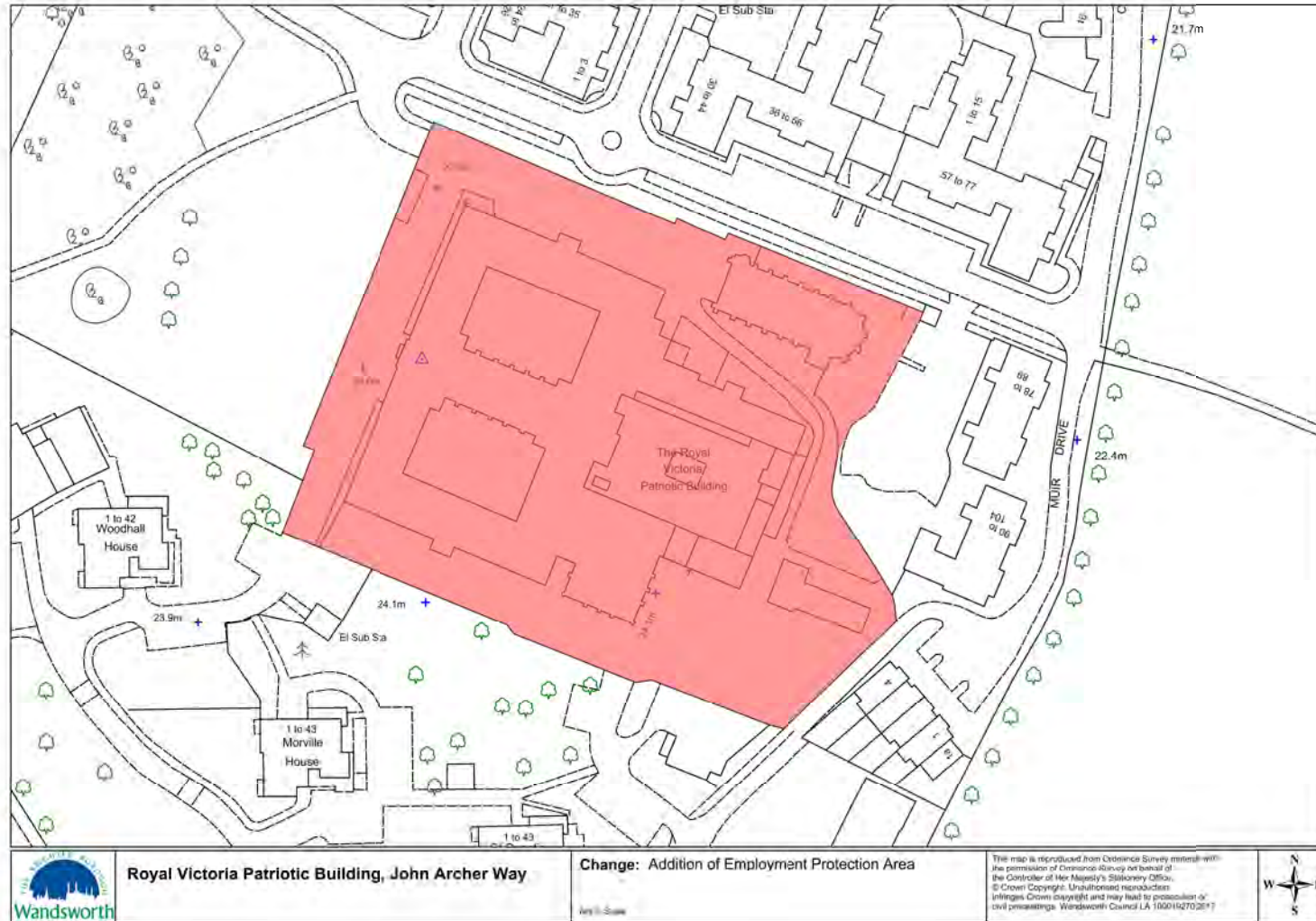
Map 23 (Policies map ref 149) Irene House, 218 Balham High Road and 25 Boundaries Road - Employment Protection Area



Map 24 (Policies map ref 150) Jaggard Way - Employment Protection Area



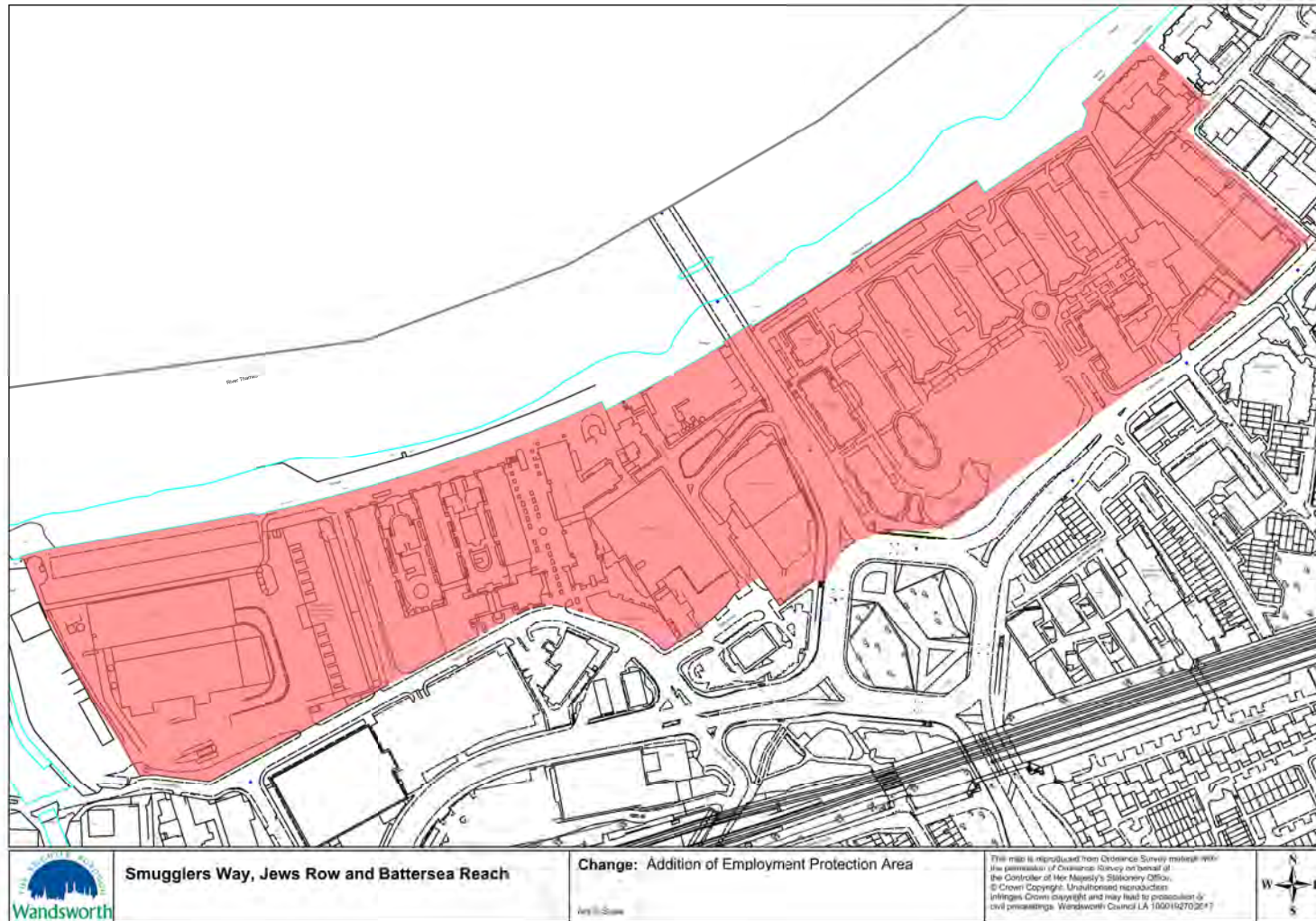
Map 25 (Policies map ref 151) Princeton Court - Employment Protection Area



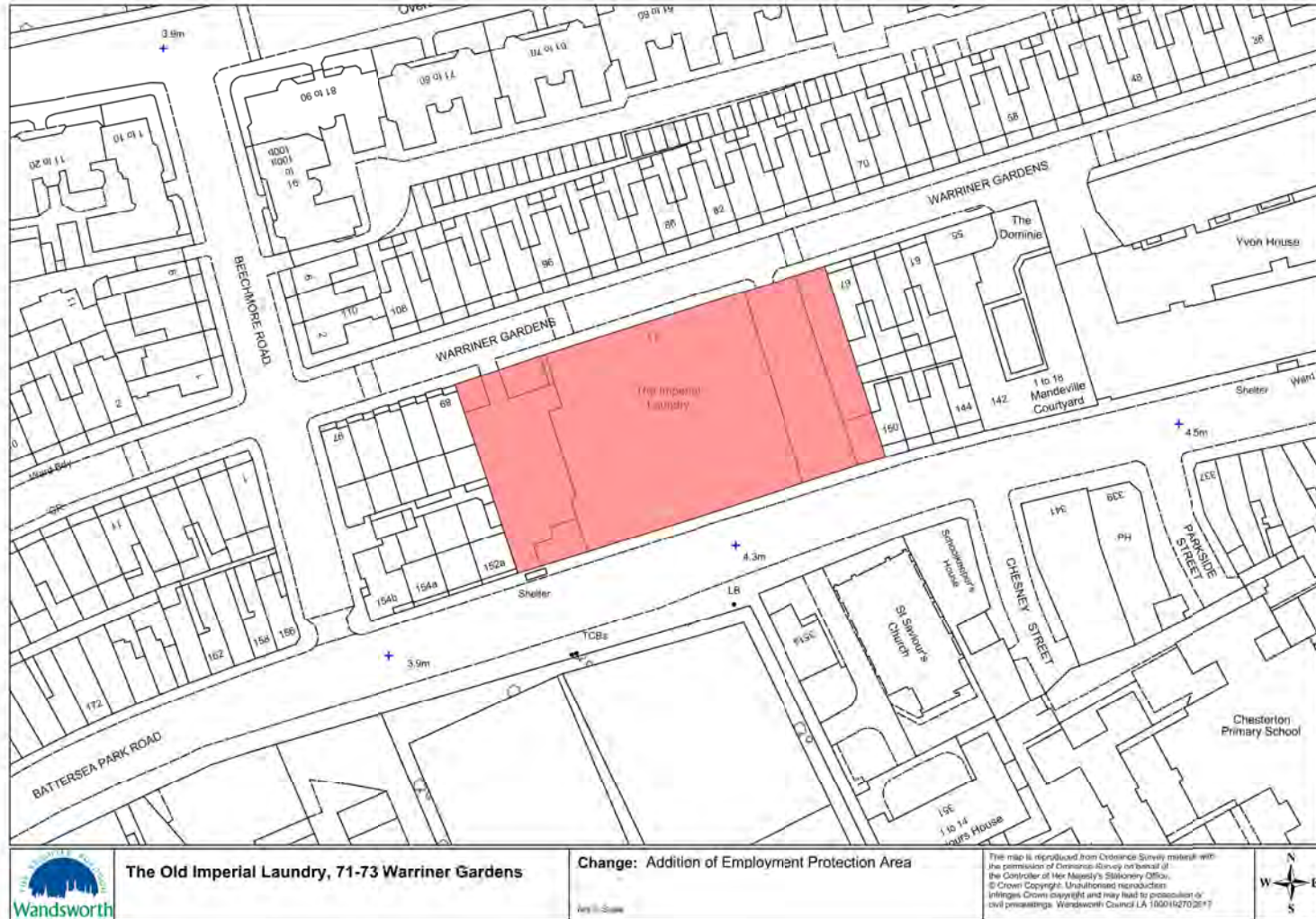
Map 26 (Policies map ref 152) Royal Victoria Patriotic Building - Employment Protection Area



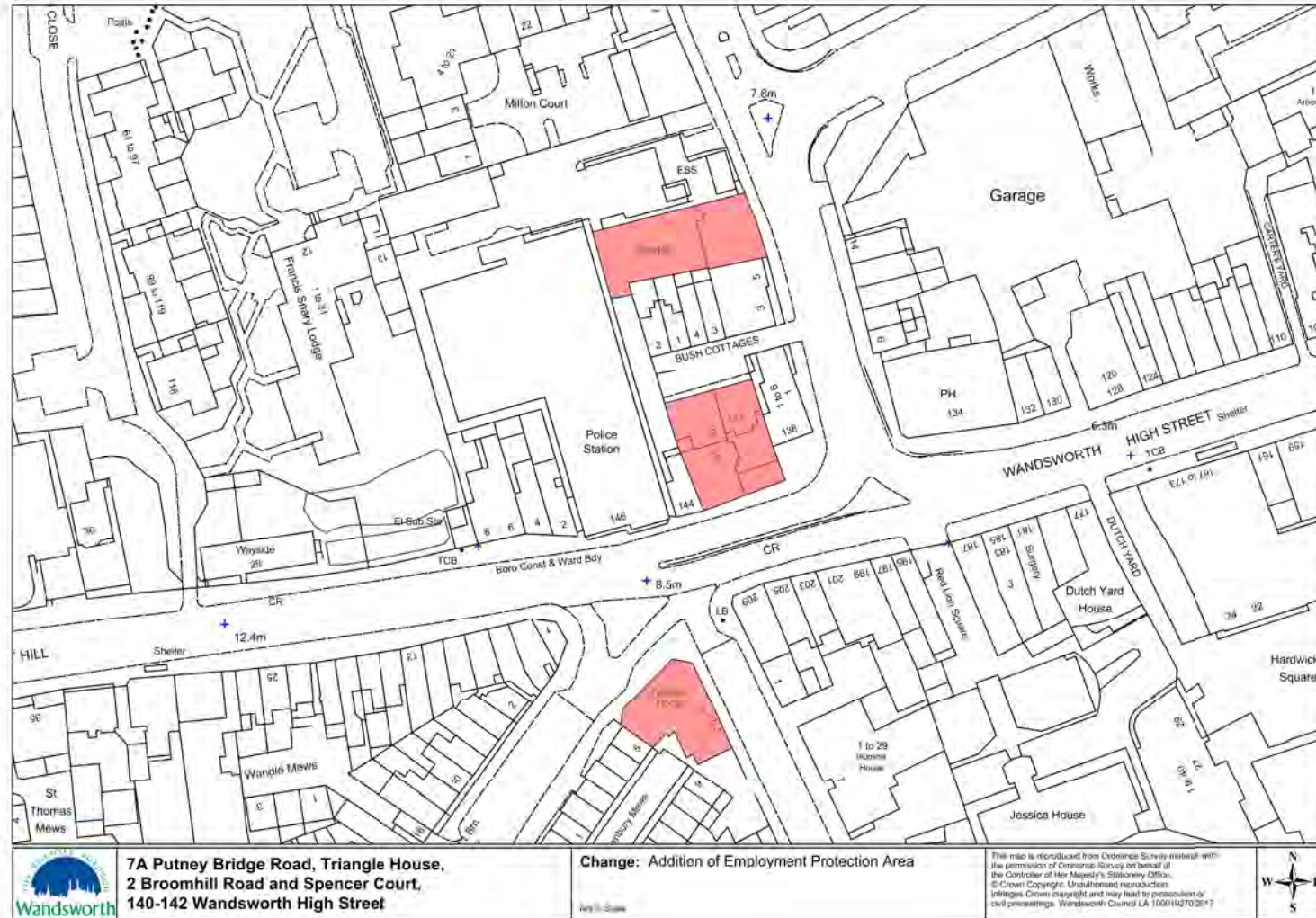
Map 27 (Policies map ref 153) Smiths Yard - Employment Protection Area



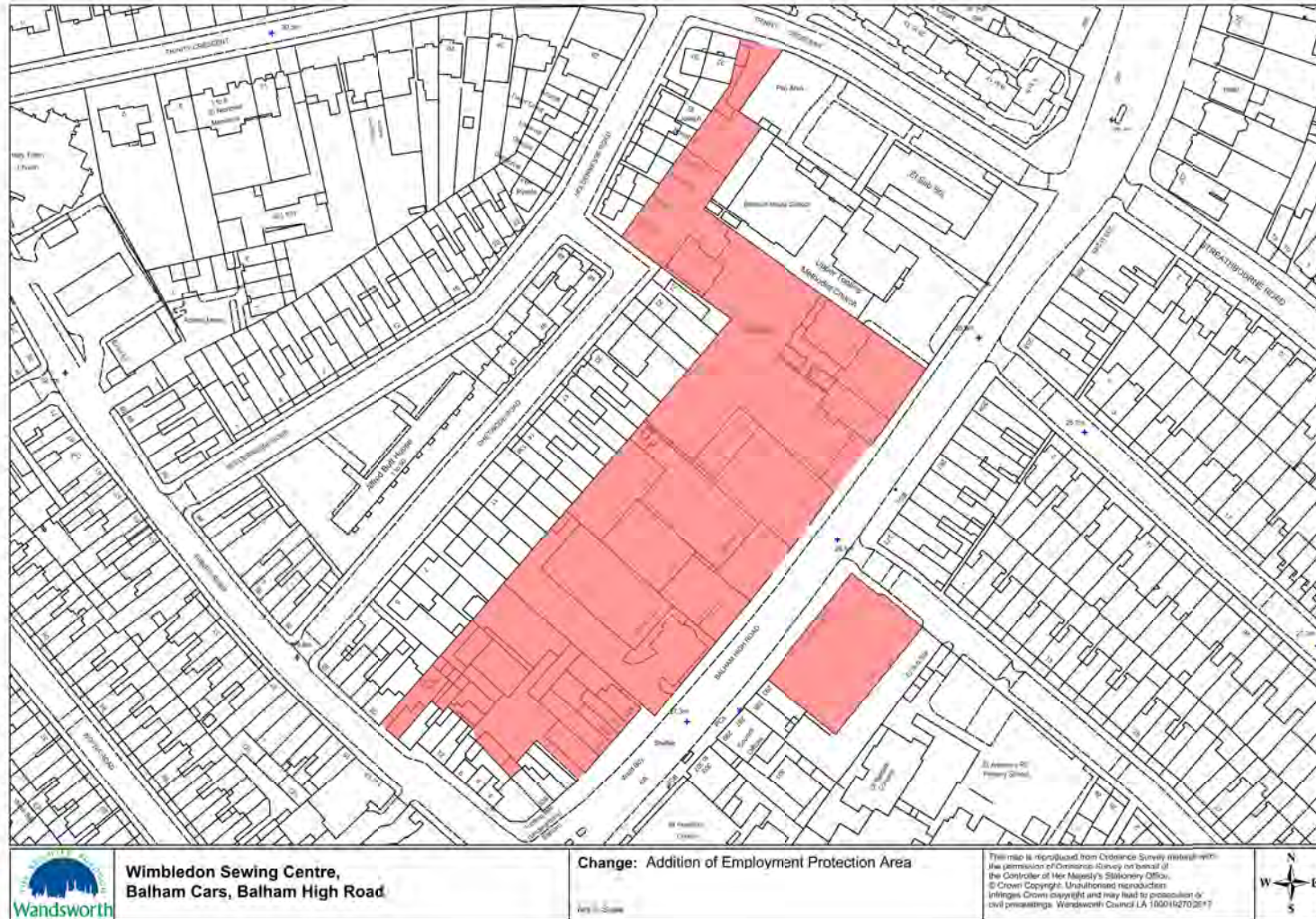
Map 28 (Policies map ref 154) Smugglers Way, Jews Row, Battersea Reach - Employment Protection Area



Map 29 (Policies map ref 155) The Old Imperial Laundry, 71-73 Warriner Gardens - Employment Protection Area

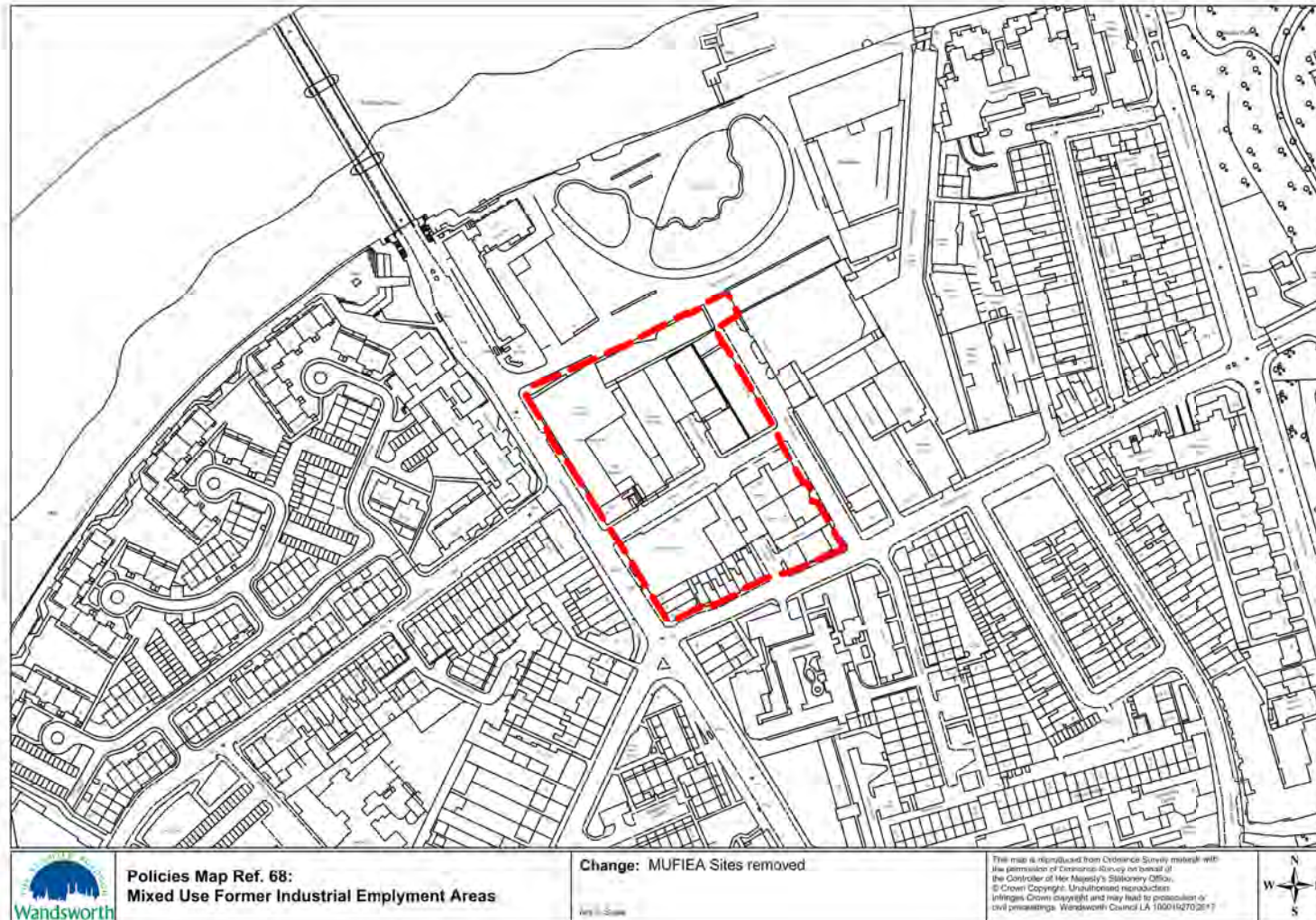


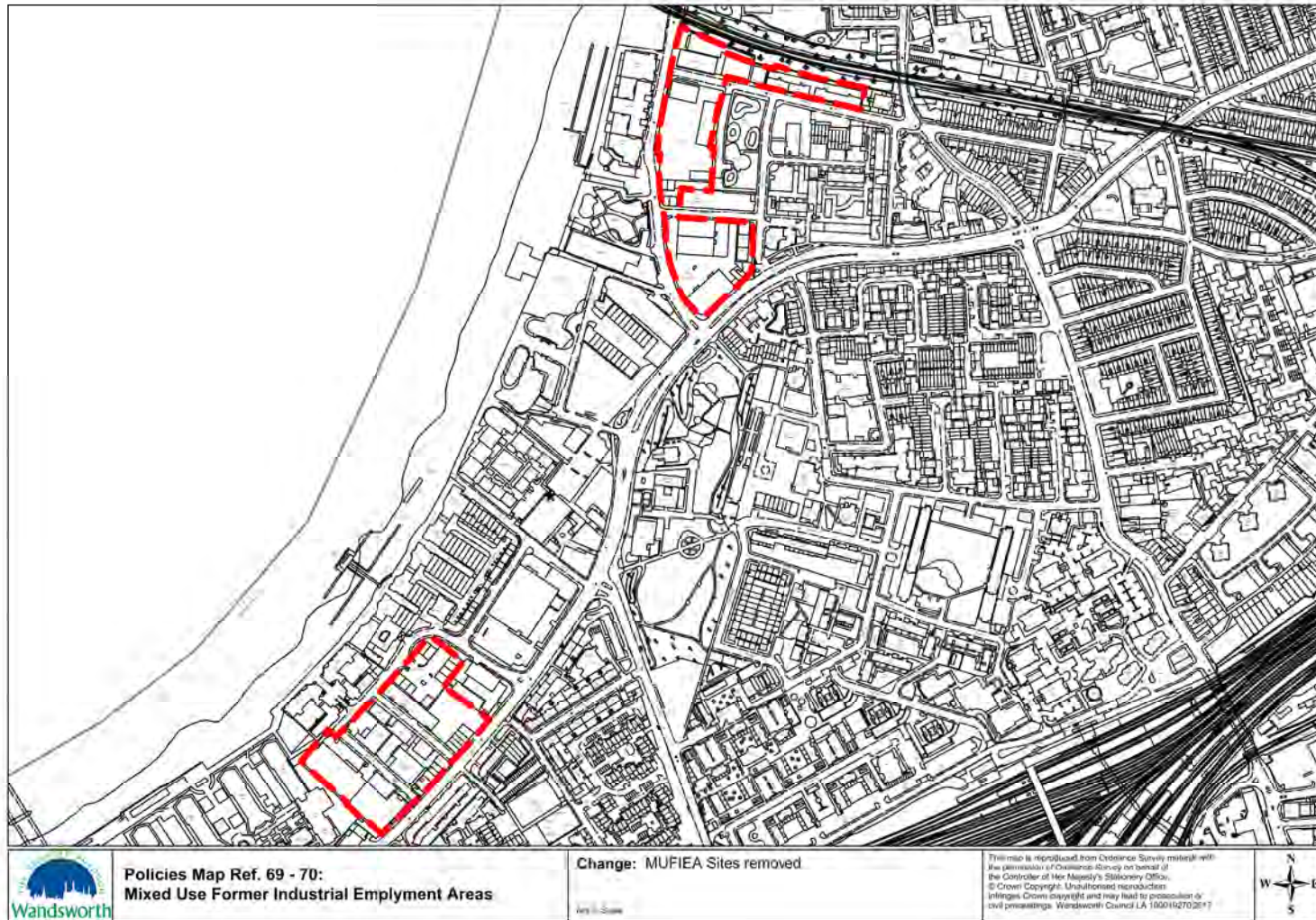
Map 30 (Policies map ref 156) Triangle House, 2 Broomhill Road, Spencer Court - Employment Protection Area



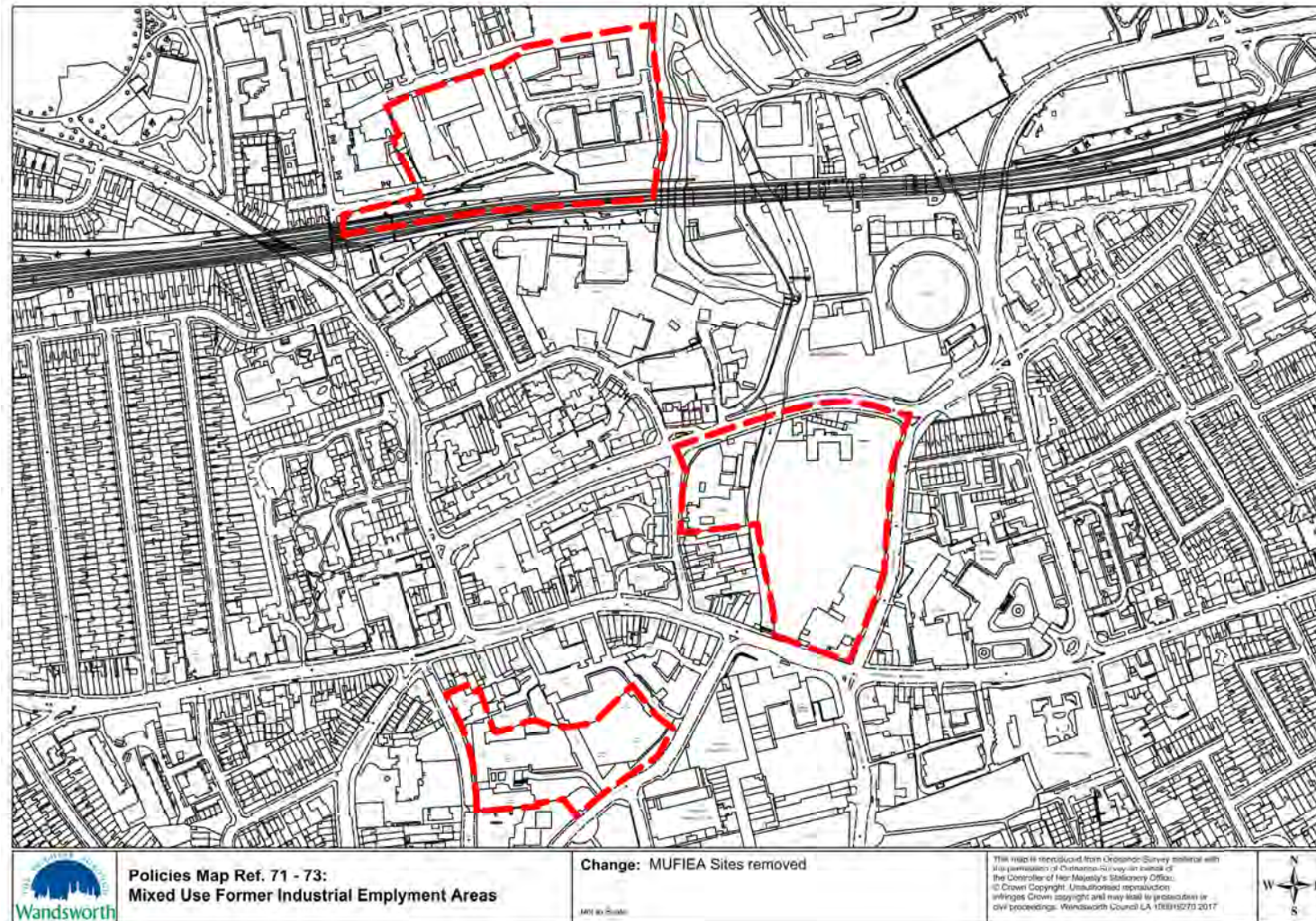
Map 31 (Policies map ref 157) Wimbledon Sewing Centre, Balham Cars, Balham High Road - Employment Protection Area

2.6 Deleted MUFIEAs



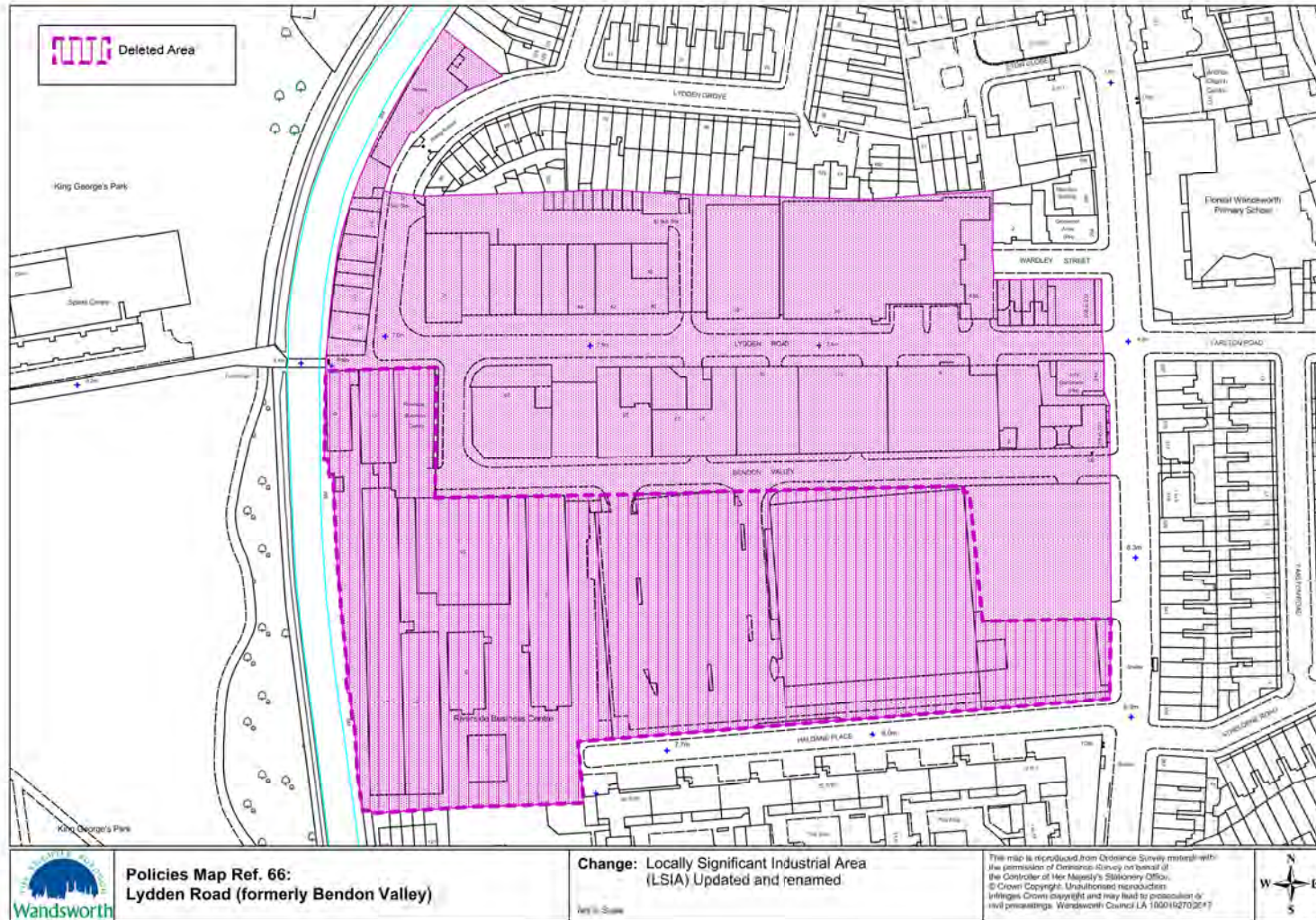


Map 33 (Policies map ref 69) Chatfield/Mendip Roads and (Policies map ref 70) Gwynne Road MUFIEAs

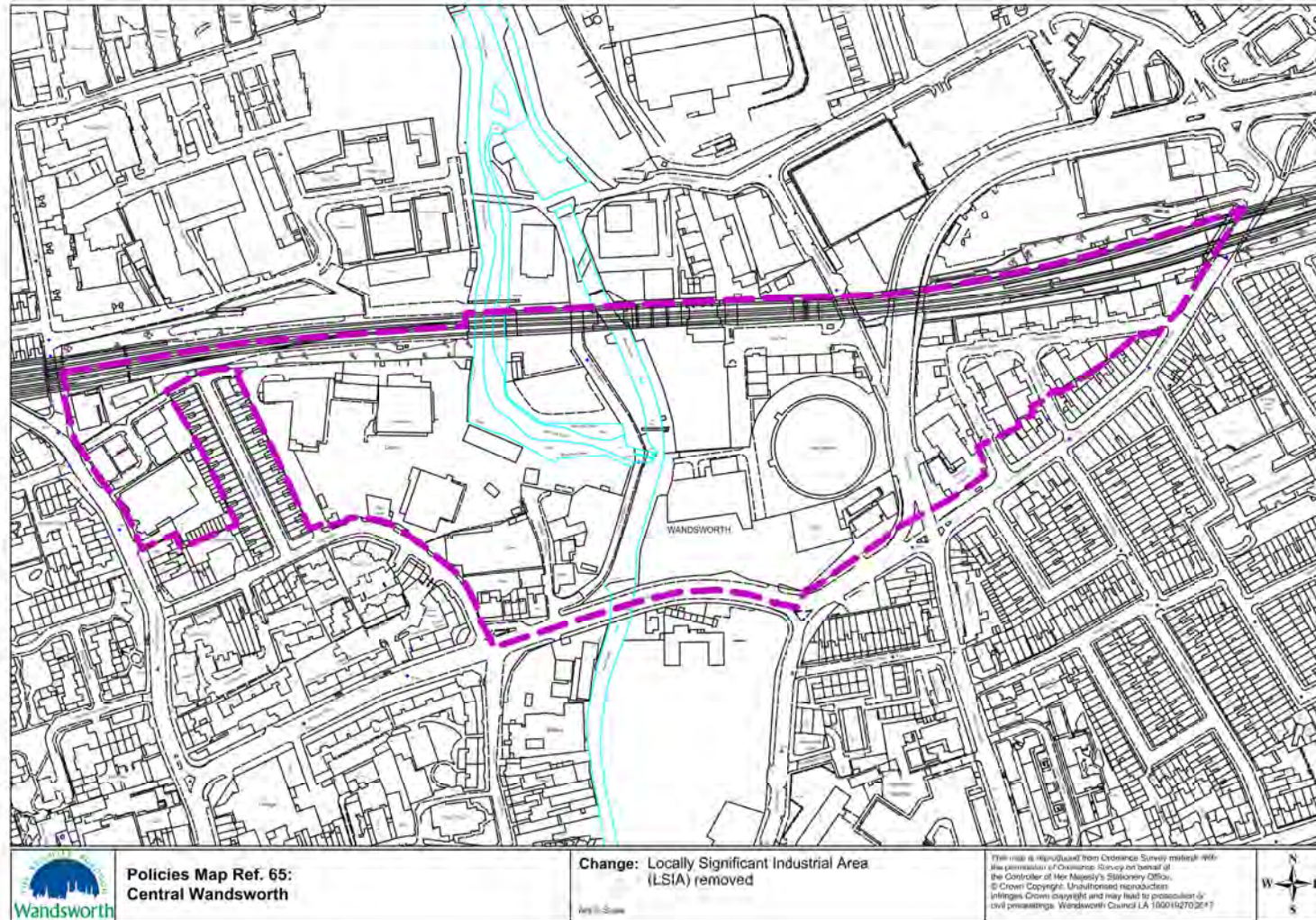


Map 34 (Policies map ref 71) Ram Brewery, (Policies map ref 72) Business Village and (Policies map ref 73) Osiers Road MUFIEAs

2.7 Amended and deleted LSIA's

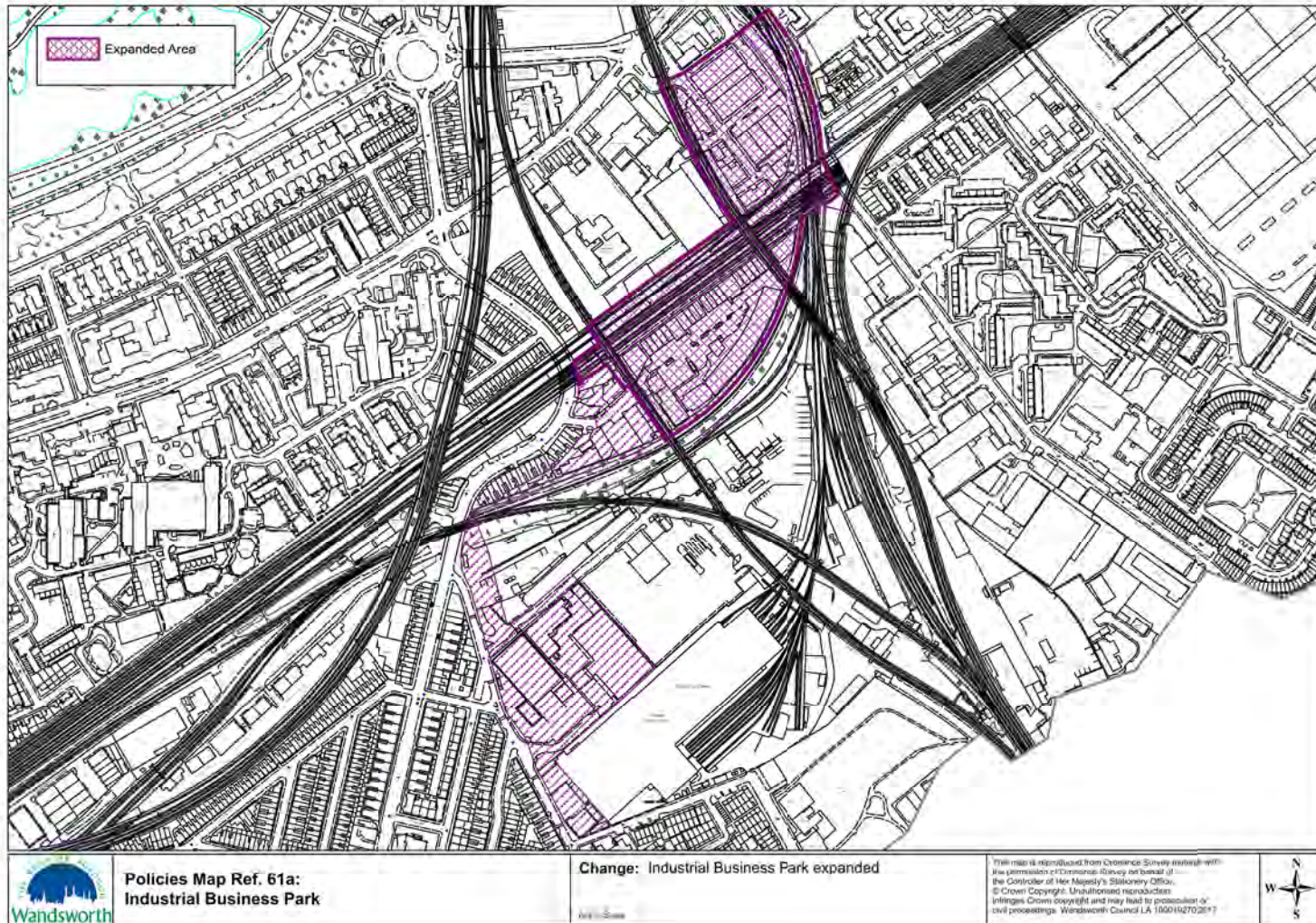


Map 35 (Policies map ref 66) Lydden Road (formerly Bendon Valley) LSIA



Map 36 (Policies map ref 65) Central Wandsworth LSIA

2.8 Amended SIL Industrial Business Park (IBP)



Map 37 (Policies map ref 61a) Strategic Industrial Location - Industrial Business Park

For more information write to:

Policy and Design,
Planning and Transport,
Town Hall,
Wandsworth High Street,
London SW18 2PU

Telephone: (020) 8871 6649, 6650, 7218, 7420

email: planningpolicy@wandsworth.gov.uk

or visit our website: www.wandsworth.gov.uk/planning