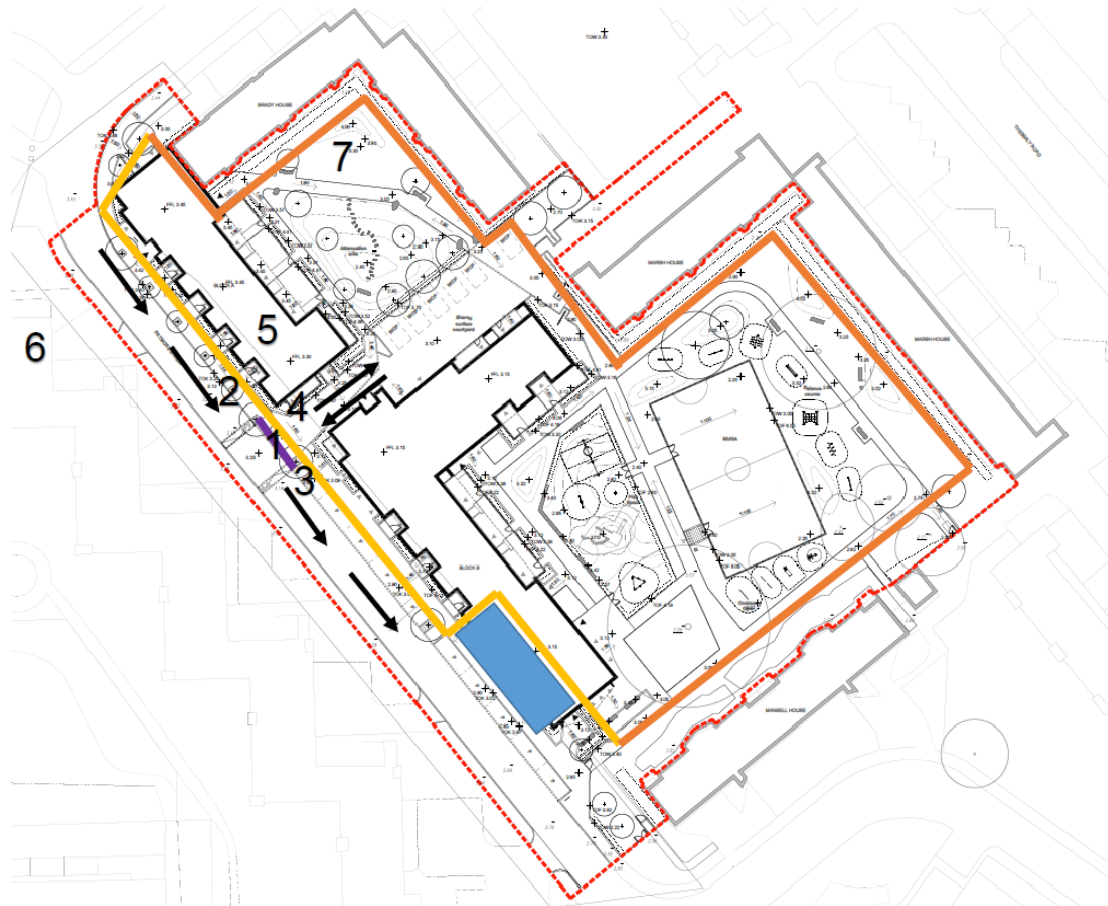


Patmore Street Meet the Builder Event



Site Set Up – Demolition & Groundworks



Patmore Estate Logistics Plan Weeks 1-11

Site demolition and clearance including MUGA

- Existing 1800mm high heras fencing gradually replaced with hoarding once new existing railings and walls are demolished and sign written with client sign board and safety signage
- New 2.4m high hoarding erected
Existing residents parking bays remaining close
- New site crossover formed
- Vehicle access gate
- 1 Pedestrian access gate
- 2 Site Gateman's / Traffic Marshall cabin
- 3 Vehicle wheel washing point
- 4 Site Oasis office and welfare provision
- 5 Fire muster point
- 6 Materials storage areas – these locations will change as the site progresses
- 7
- Vehicles to drive in and out of site with reversing required under the control of a Traffic Marshall

Site Set Up – Demolition & Groundworks

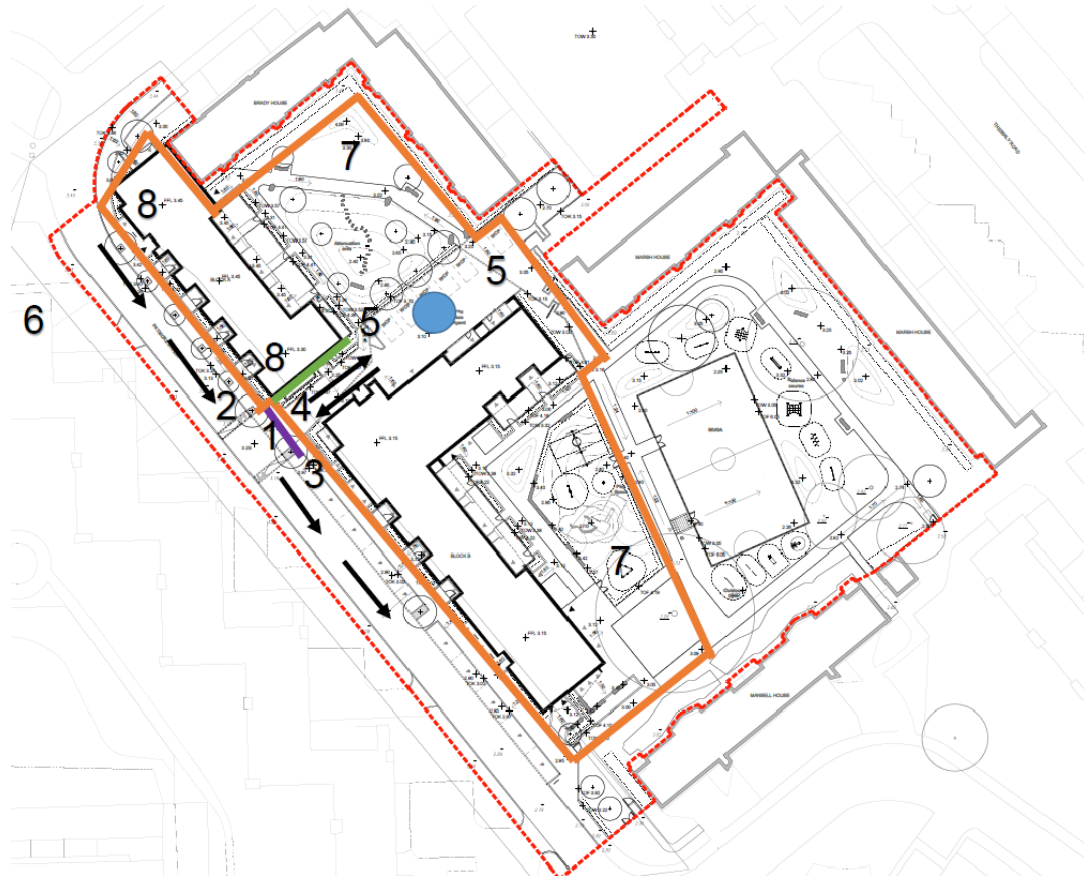


Patmore Estate Logistics Plan Weeks 12-35

New car park, substructures and new MUGA formed

- 2.4m high hoarding erected and sign written with client sign board and safety signage
- Protected pedestrian walkway to and from site offices
- New site crossover formed
- 1 Vehicle access gate
- 2 Pedestrian access gate
- 3 Site Gateman's / Traffic Marshall cabin
- 4 Vehicle wheel washing point
- 5 Site office and welfare provision on newly formed parking bays
- 6 Fire muster point
- 7 Materials storage areas – these locations will change as the site progresses
- 8 Footpath closure under license from Highways for health and safety reasons
- Vehicles to drive in and out of site with reversing required under the control of the Traffic Marshall

Site Set Up – Demolition & Groundworks



Patmore Estate Logistics Plan Weeks 36-91

MUGA handed over (week 36) hoarding line adjusted, superstructures and internals progressed to handover

2.4m high hoarding erected and sign written with client sign board and safety signage

Protected pedestrian walkway to and from site offices

New site crossover formed

- 1 Vehicle access gate
- 2 Pedestrian access gate
- 3 Site Gateman's / Traffic Marshall cabin
- 4 Vehicle wheel washing point
- 5 Site office and welfare provision on newly formed parking bays
- 6 Fire muster point
- 7 Materials storage areas – these locations will change as the site progresses
- 8 Footpath closure under license from Highways for health and safety reasons

→ Vehicles to drive in and out of site with reversing required under the control of the Traffic Marshal

60M luffing jib tower crane

bugler
DEVELOPMENTS

Site Overview



Engaging with You

Before We Start:

- Introduction letter
- Online introduction meeting
- Open door policy or appointments to discuss queries

Future Engagement:

- Regular newsletters
- Contact details on hoarding (fencing around the site)
- Updated community noticeboard displayed on hoarding
- Contact details for the Project Manager
- Scheme will be registered with Considerate Constructors Scheme
- We will be engaging and holding events with the local Schools



Traffic Management Plan

What is a Construction Traffic Management Plan?

- Required as a Planning Conditions
- Signed off by London Borough of Wandsworth Planning Team
- Document which sets out how vehicles move in and out of the site
- Sets out how movement of vehicles will be managed
- How the impact of construction vehicles will be mitigated for you as our neighbours

Who will be responsible for the Plan?

- Construction Manager:
 - Monitor the site
 - Ensure signage in place
 - Ensure the community is informed

Managing Construction Traffic – Stage One



Patmore Estate Logistics Plan Weeks 1-11

Site demolition and clearance including MUGA

- Existing 1800mm high heras fencing gradually replaced with hoarding once new existing railings and walls are demolished and sign written with client sign board and safety signage
- New 2.4m high hoarding erected
Existing residents parking bays remaining close
- New site crossover formed
- Vehicle access gate
- 1 Pedestrian access gate
- 2 Site Gateman's / Traffic Marshall cabin
- 3 Vehicle wheel washing point
- 4 Site Oasis office and welfare provision
- 5 Fire muster point
- 6 Materials storage areas – these locations will change as the site progresses
- 7
- Vehicles to drive in and out of site with reversing required under the control of a Traffic Marshall

Managing Construction Traffic

What Measures Will be Taken to Manage Construction Traffic?

- Traffic Marshals will be in place
- Signage to advise pedestrians and cyclists of the construction site
- Vehicles will reverse into site from Patmore Street with a Banksman
- Wheel washing facilities
- Timed delivery schedules
- Deliveries to avoid peak times and weekends and school drop of and pick up times
- Designated areas for storage, loading and unloading

Staff Parking:

- Not permitted on Patmore Street
- Contractors will be instructed to avoid parking in residents parking bays and will be encouraged to use public transport wherever possible

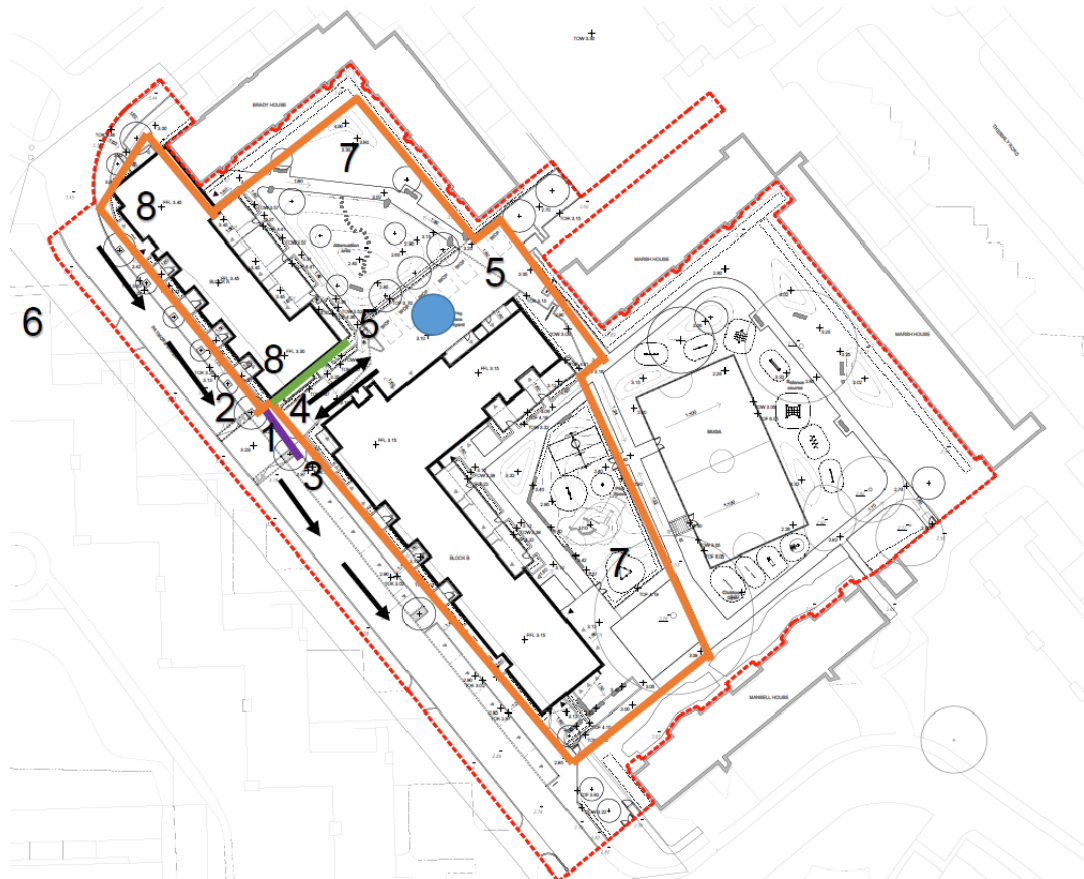
Construction Traffic – Types of Vehicles

Different Types of Vehicles:

- White vans
- Small delivery lorries – 7.5t
- Muck away lorries
- Low loaders
- Concrete lorries
- Curtain sider articulated lorries



Construction Traffic Access – Construction



Patmore Estate Logistics Plan Weeks 36-91

MUGA handed over (week 36) hoarding line adjusted, superstructures and internals progressed to handover

2.4m high hoarding erected and sign written with client sign board and safety signage

Protected pedestrian pathway to and from site offices

New site crossover formed

- 1 Vehicle access gate
- 2 Pedestrian access gate
- 3 Site Gateman's / Traffic Marshall cabin
- 4 Vehicle wheel washing point
- 5 Site office and welfare provision on newly formed parking bays
- 6 Fire muster point
- 7 Materials storage areas – these locations will change as the site progresses
- 8 Footpath closure under license from Highways for health and safety reasons

→ Vehicles to drive in and out of site with reversing required under the control of the Traffic Marshal

60M luffing jib tower crane

bugler
DEVELOPMENTS

Conclusion

Once works commence on site, regular newsletters will be issued to interested parties and will be available on the community noticeboard.